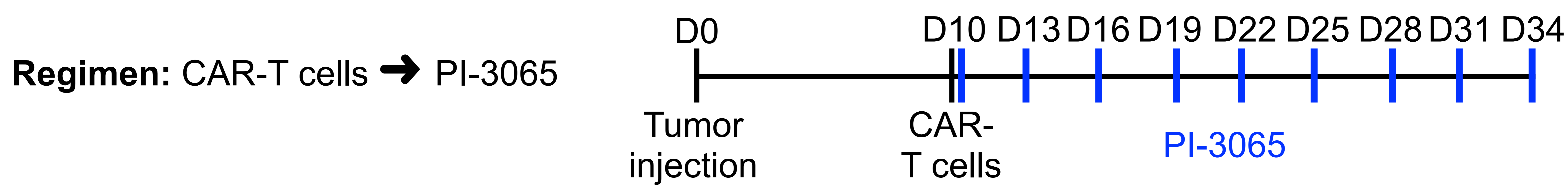
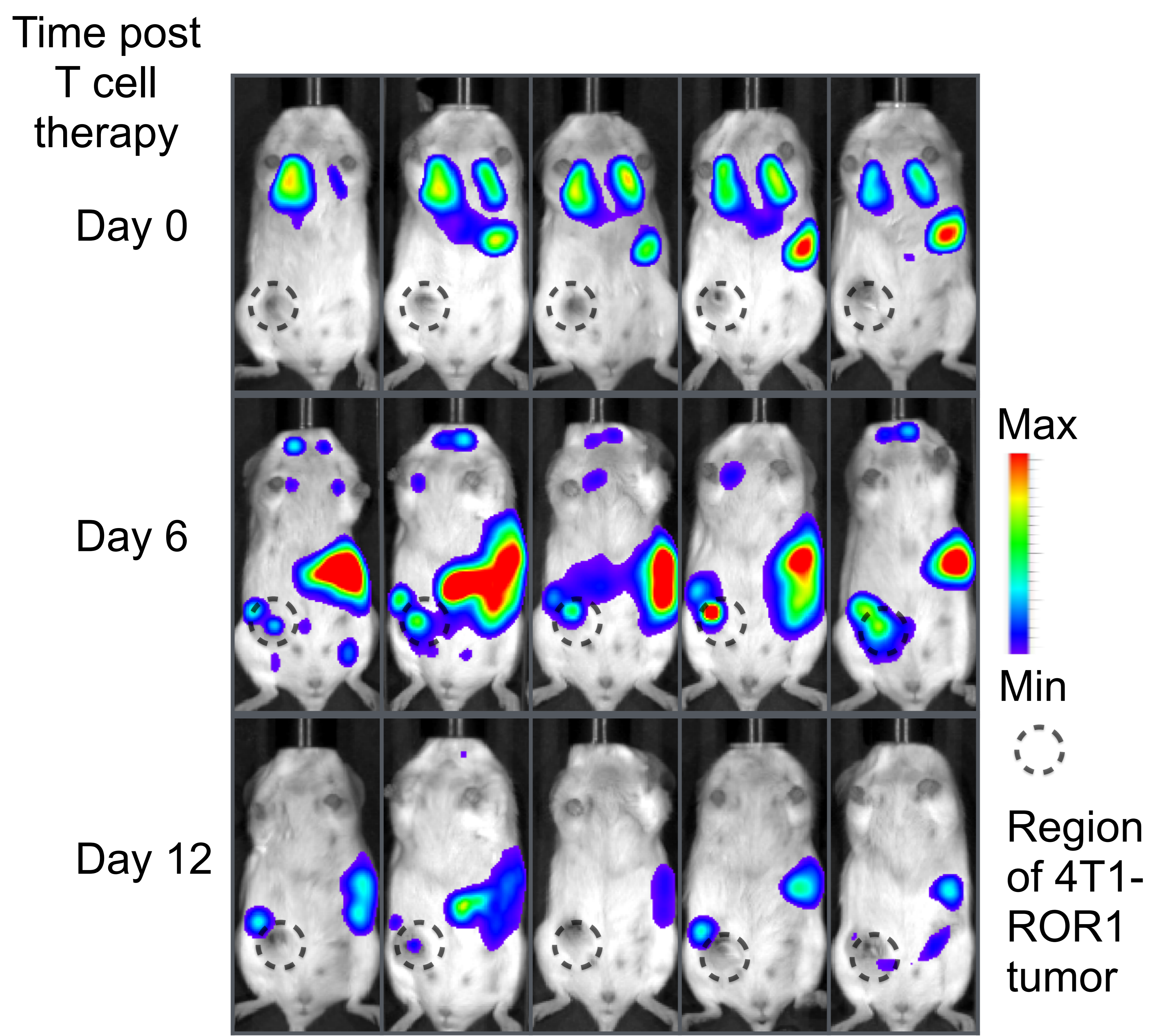


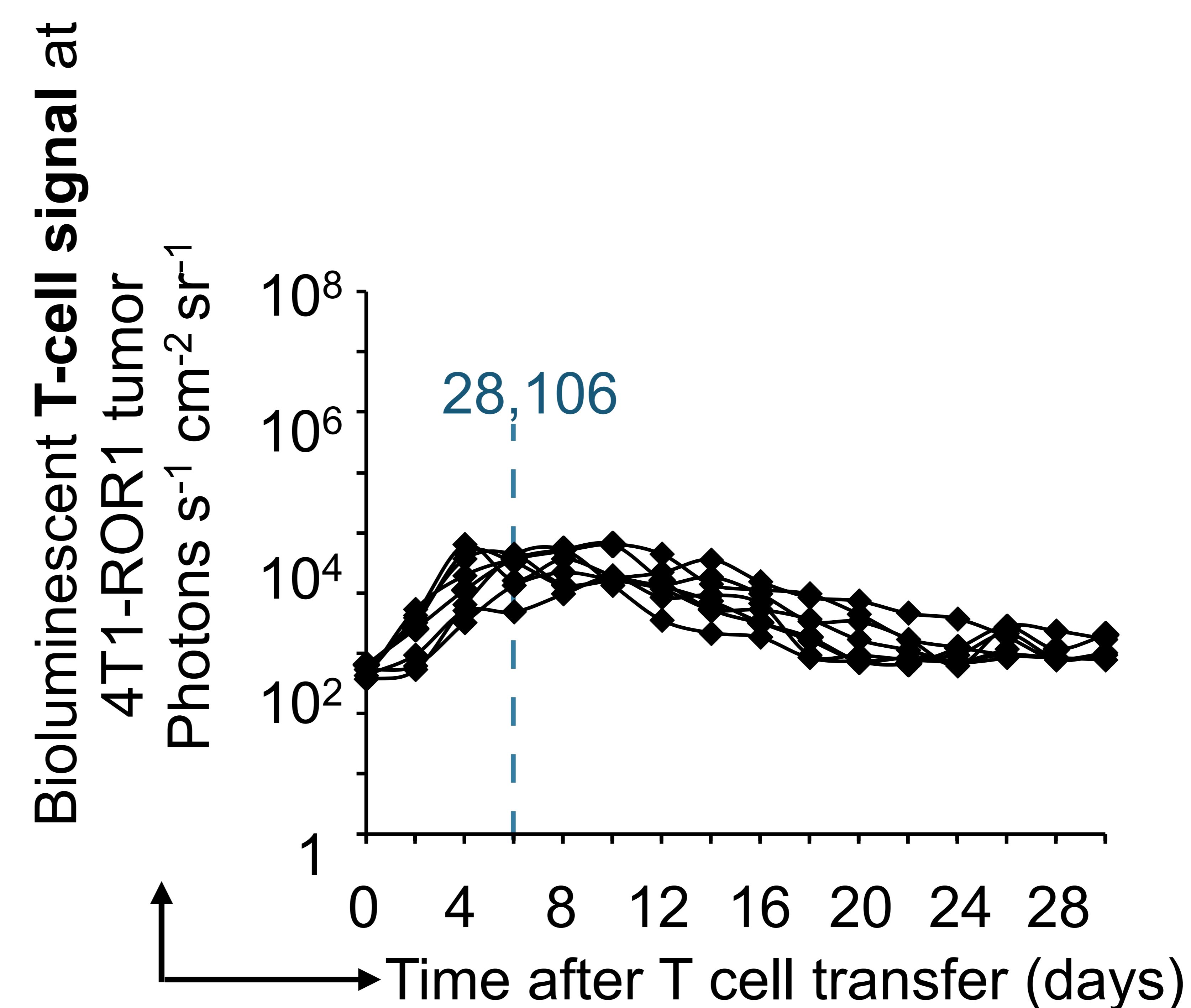
A



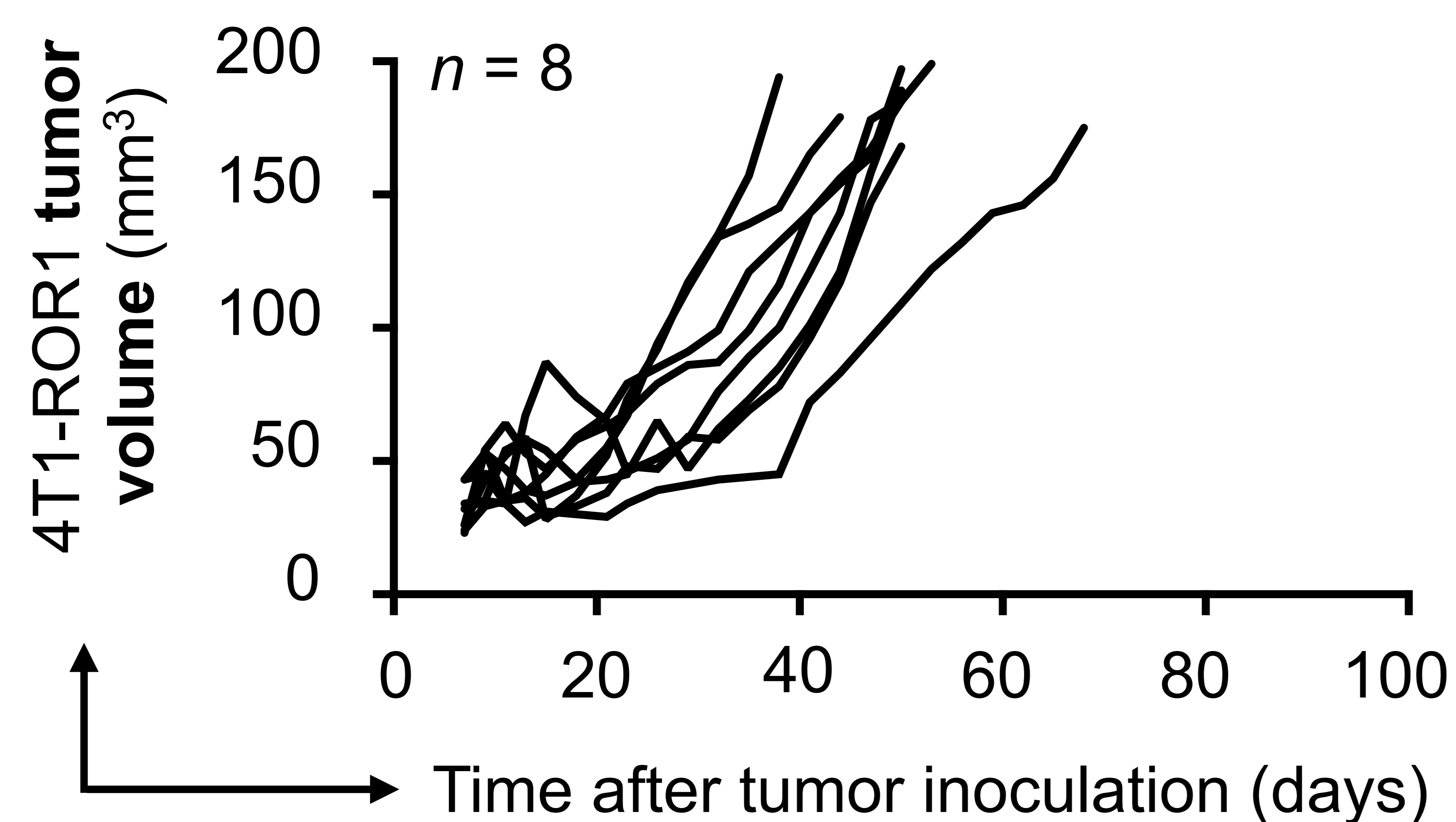
B Bioluminescent T cell imaging



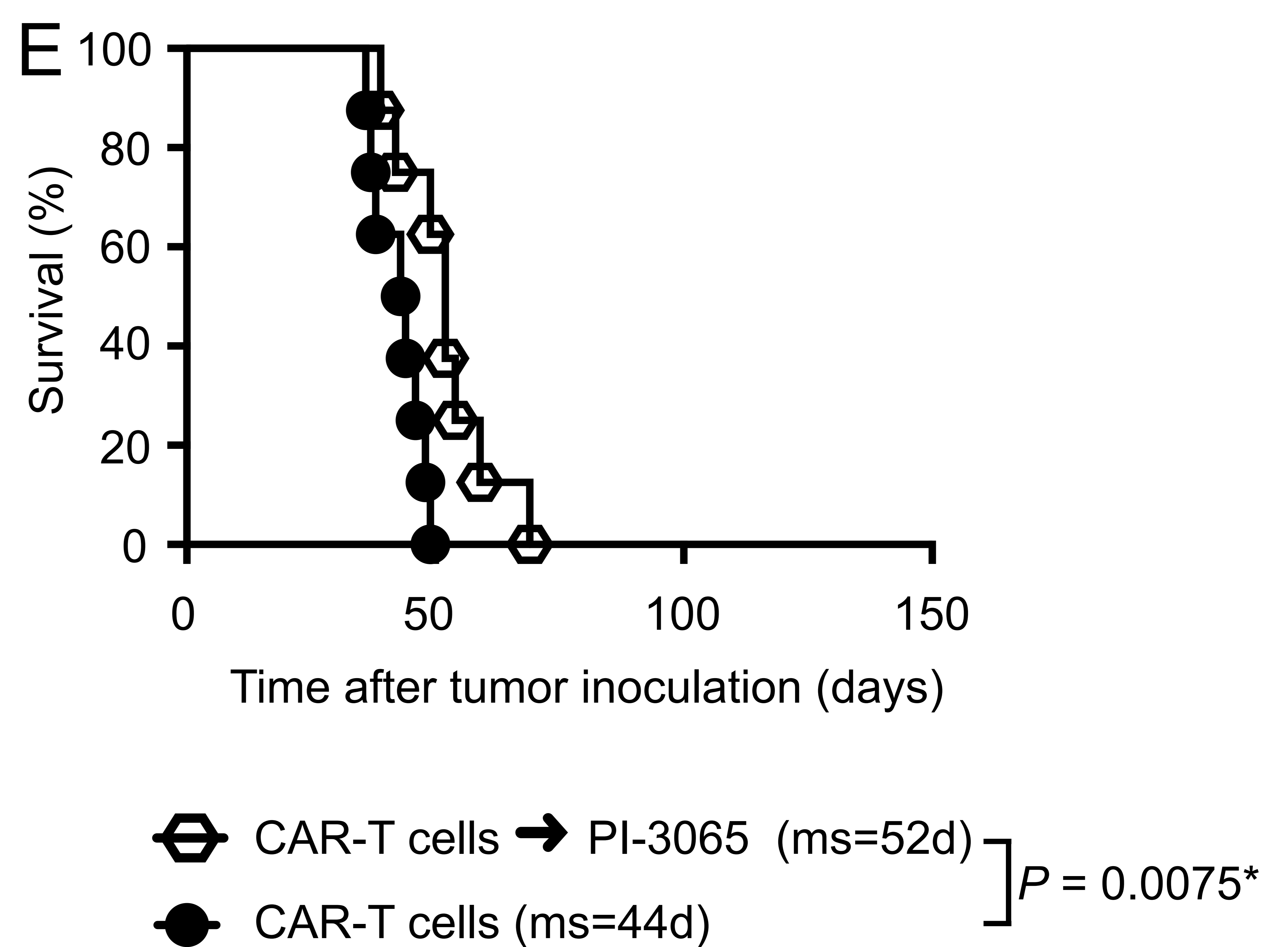
C



D



E



Supplementary Fig. S4: Repeated doses of systemic PI-3065 only modestly enhances CAR-T cell therapy. (A) Time lines and dosing regimens. (B) Sequential bioluminescence imaging of the adoptively transferred T cells in five representative mice. (C) CBR-luc T cell signal intensities at the tumor site obtained by sequential bioluminescence imaging every two days after cell transfer. (D) Progression of 4T1-ROR1 tumor growth following therapy. Every line represents one animal and each dot reflects tumor size. Shown are eight animals pooled from two independent experiments. (E) Kaplan-Meier survival curves for treated versus control mice. ms, median survival. Statistical analysis was performed using the log-rank test and $P < 0.05$ was considered significant.