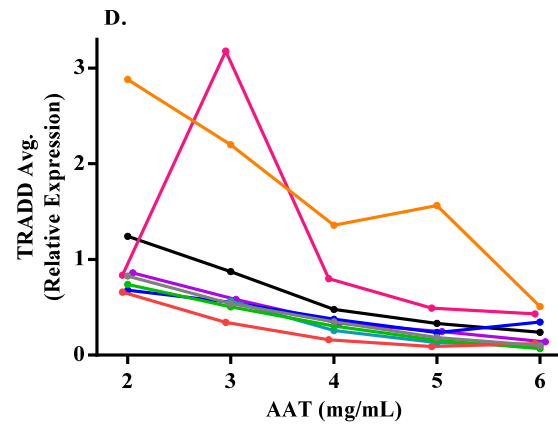
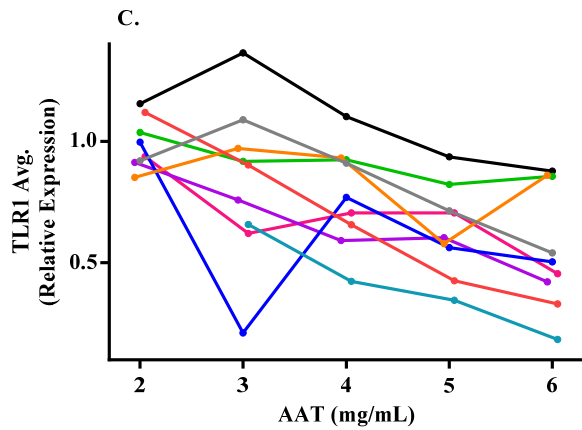
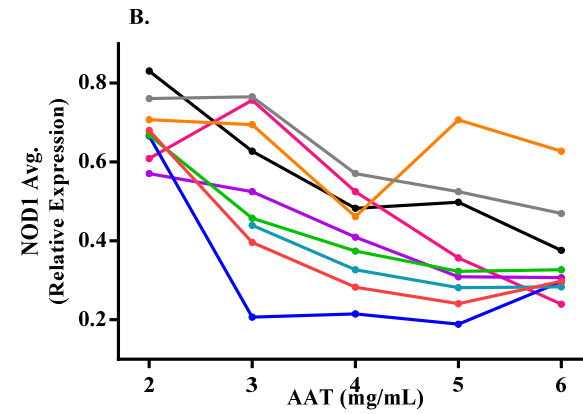
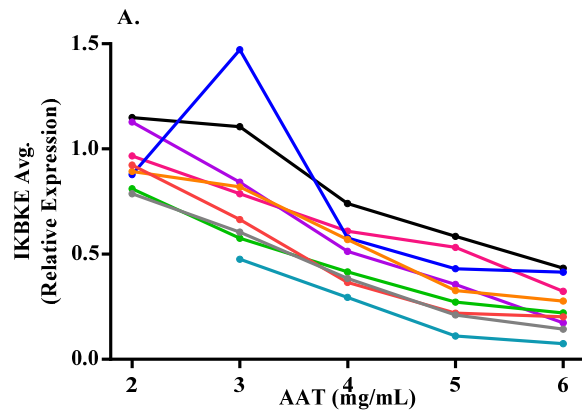
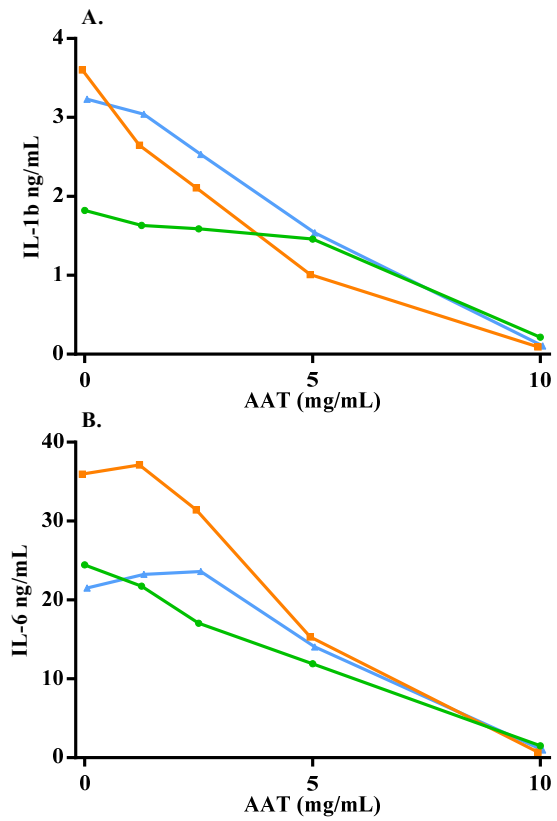


Supplementary Figure 1.
Study flow chart.



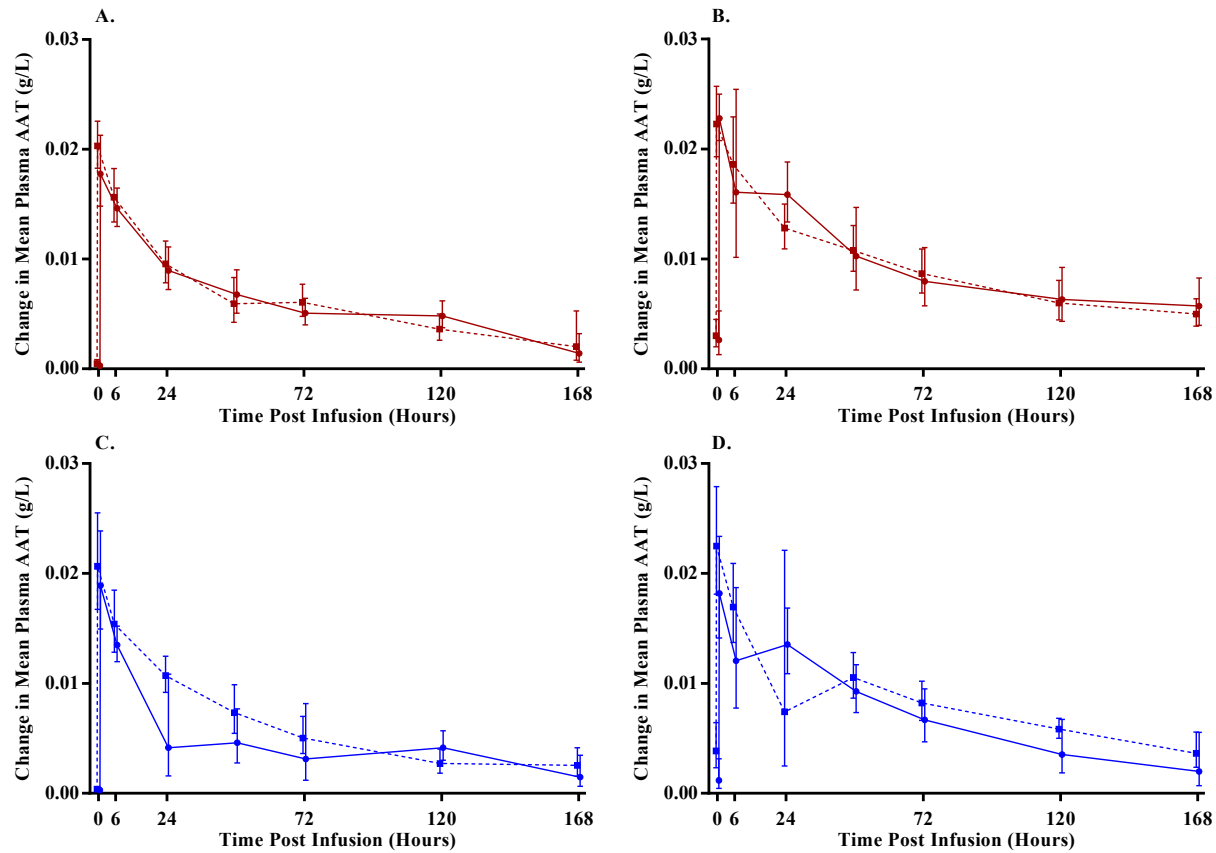
Supplementary Figure 2.

Dose response of AAT on fresh blood. Data are individual lines from 9 Adult subjects with T1D (normalized to HK genes + no AAT).



Supplementary Figure 3.

Dose response of AAT on LPS-induced cytokine secretion. Data are from 3 different adult T1D subjects. Fresh whole blood stimulated with 100ng/mL LPS +/- AAT for 18h. Circles, Subject 1. Squares, Subject 2. Triangle, Subject 3.



Supplementary Figure 4.

Change from Baseline in Plasma AAT Blood Concentration per Gram of Infused Dose per Kilogram of Subject Weight. Geometric means and 95% confidence intervals of change from baseline in plasma AAT levels, scaled by dose and subject weight, are displayed. Geometric means require positive values therefore scaled change from baseline concentration levels at or below the baseline value are converted to 0.0003 (the smallest positive change observed in the data) prior to calculating the geometric means and confidence intervals. This figure is used to examine dose proportionality and the trajectory of change from baseline plasma AAT over time. A. Adult cohort, first dose. B. Adult cohort, last dose. C. Pediatric cohort, first dose. D. Pediatric cohort, last dose. Dotted lines represent high dose and solid lines represent low dose.