

Expanded View Figures

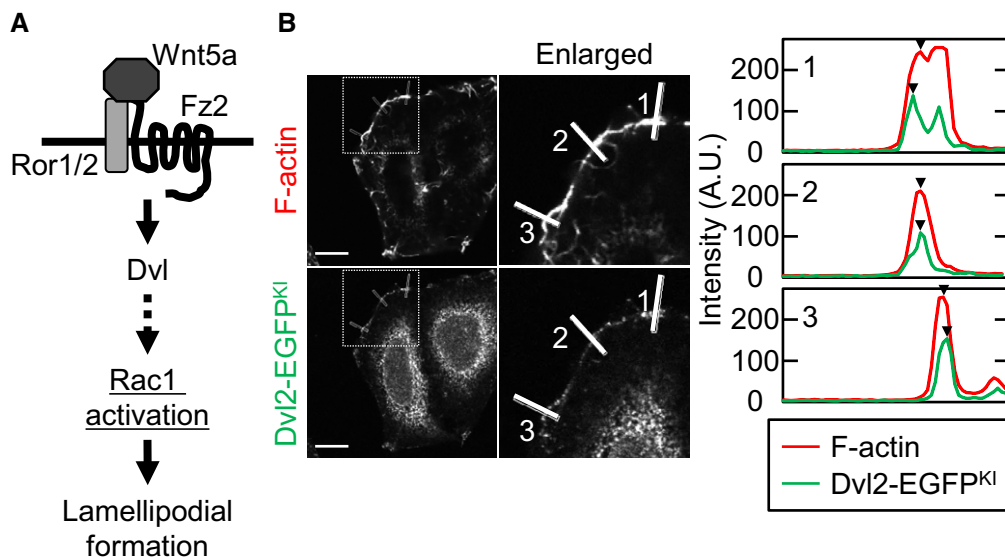


Figure EV1. The experimental representation of cortical accumulation of Dvl2-EGFP^{KI} induced by ectopic expression of Rac1^{CA}.

A Scheme of the Wnt5a signaling pathway.

B Intensities of the F-actin and Dvl2-EGFP^{KI} signals were measured at three different points in the lamellipodia, and representative results are shown at right. Arrow heads indicate the measurement point of each intensity. Scale bar, 10 μm.

Figure EV2. Wide-field view of the Dsh::GFP localization related to Fig 9C.

The white dashed box indicates an enlarged region in Fig 9C. Images of Phalloidin staining are shown at the bottom panel. Scale bar, 10 μm.

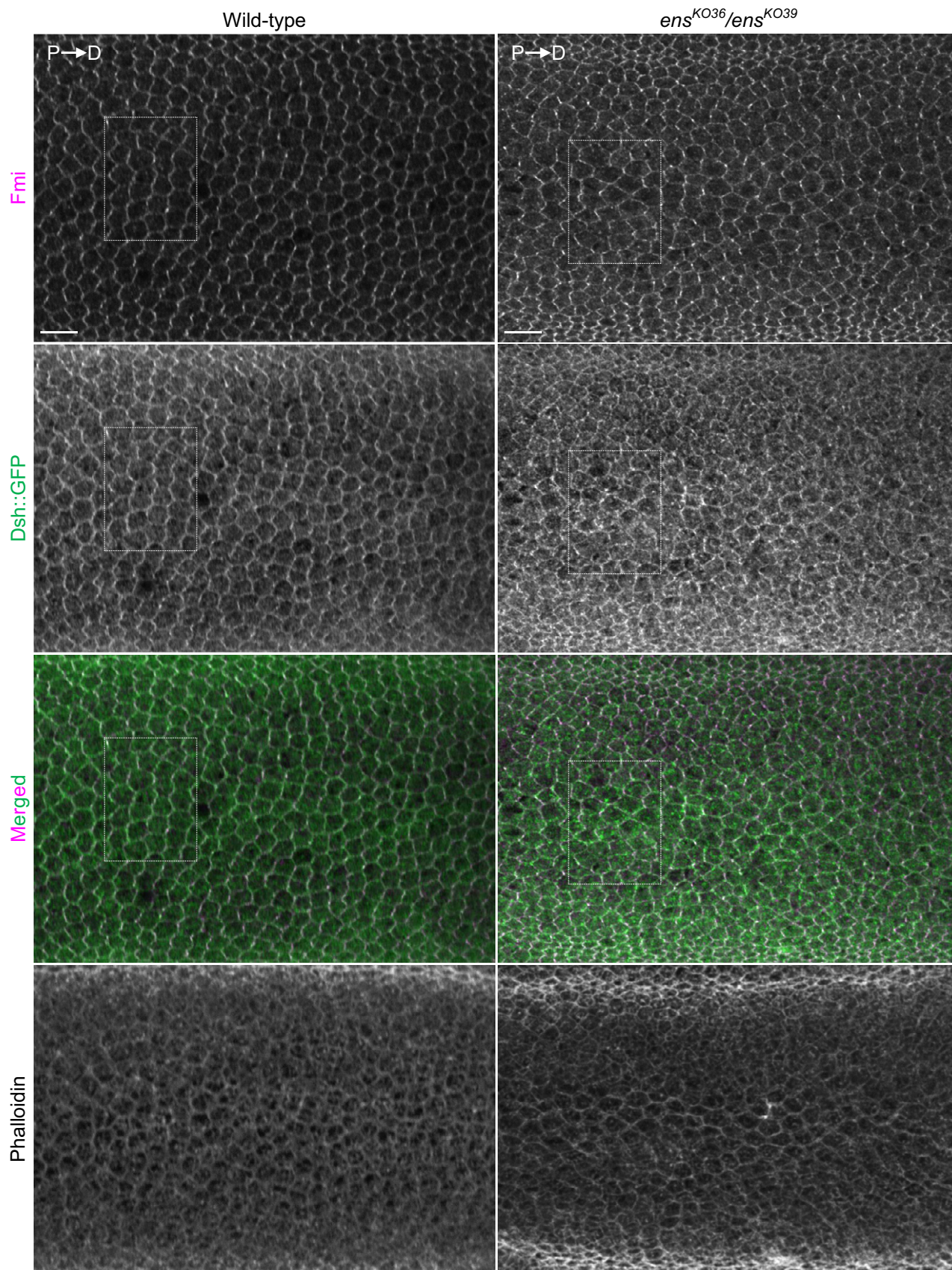


Figure EV2.