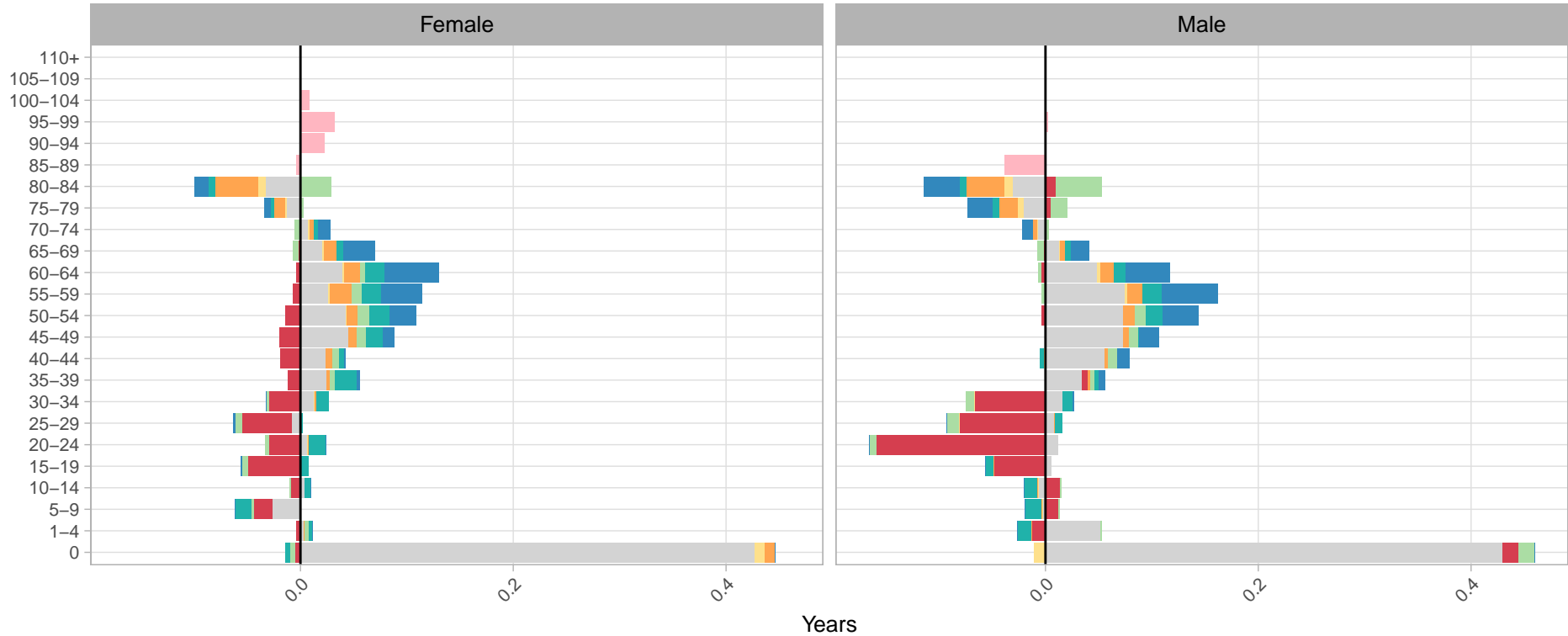


Decomposition of standard deviation

Denmark – Sweden, 2014. Negative (positive) values decrease (increase) the gap in SD with Sweden.



Cause of death

- Smoking related cancer
- Cardiovascular
- Respiratory-Infectious
- Other
- Non-Smoking related cancer
- Respiratory-Non-infectious
- External
- Above age 85