

Hierarchical clustering of the genes included from the discovery analysis

Supplemental figure 2

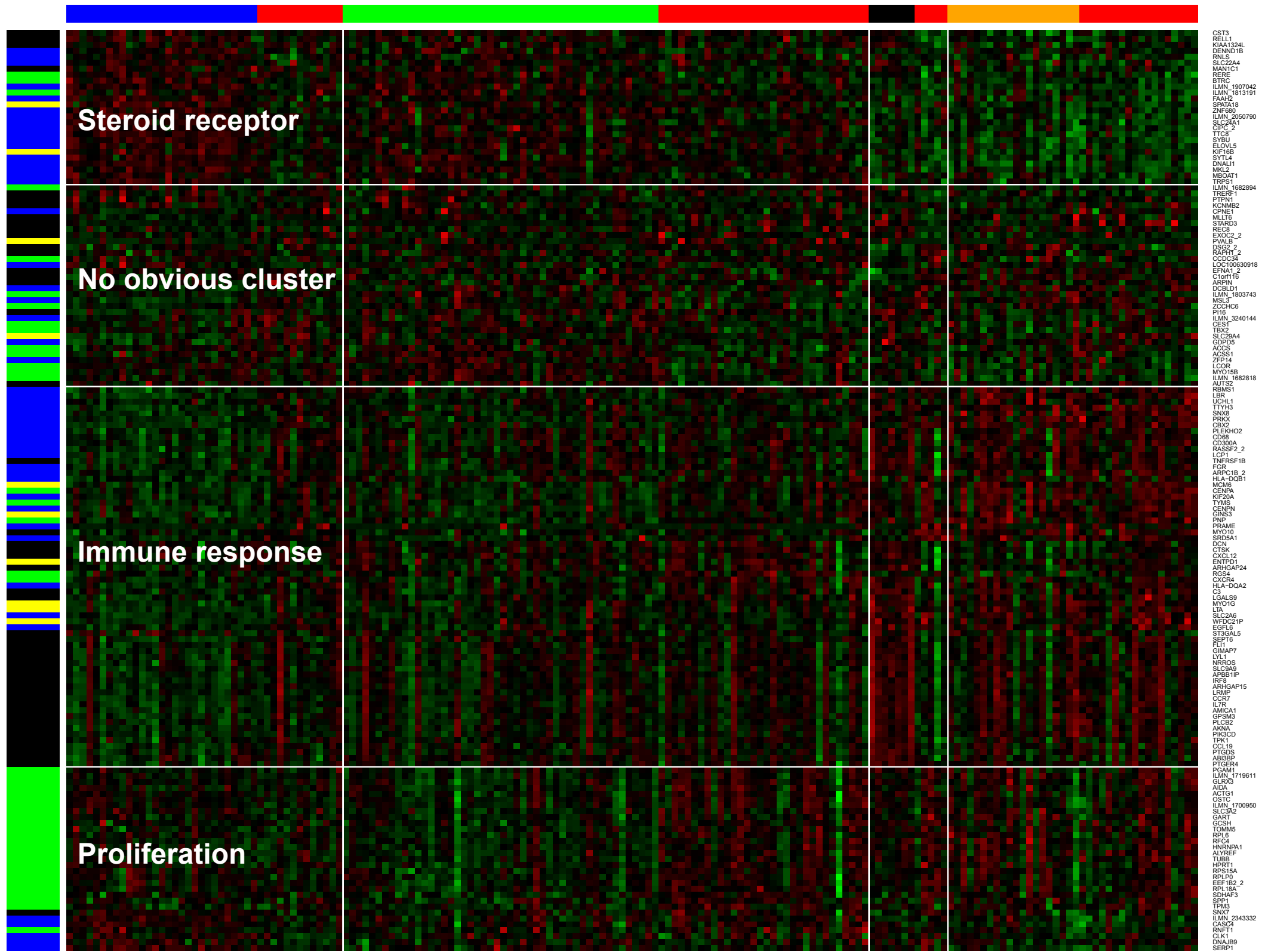
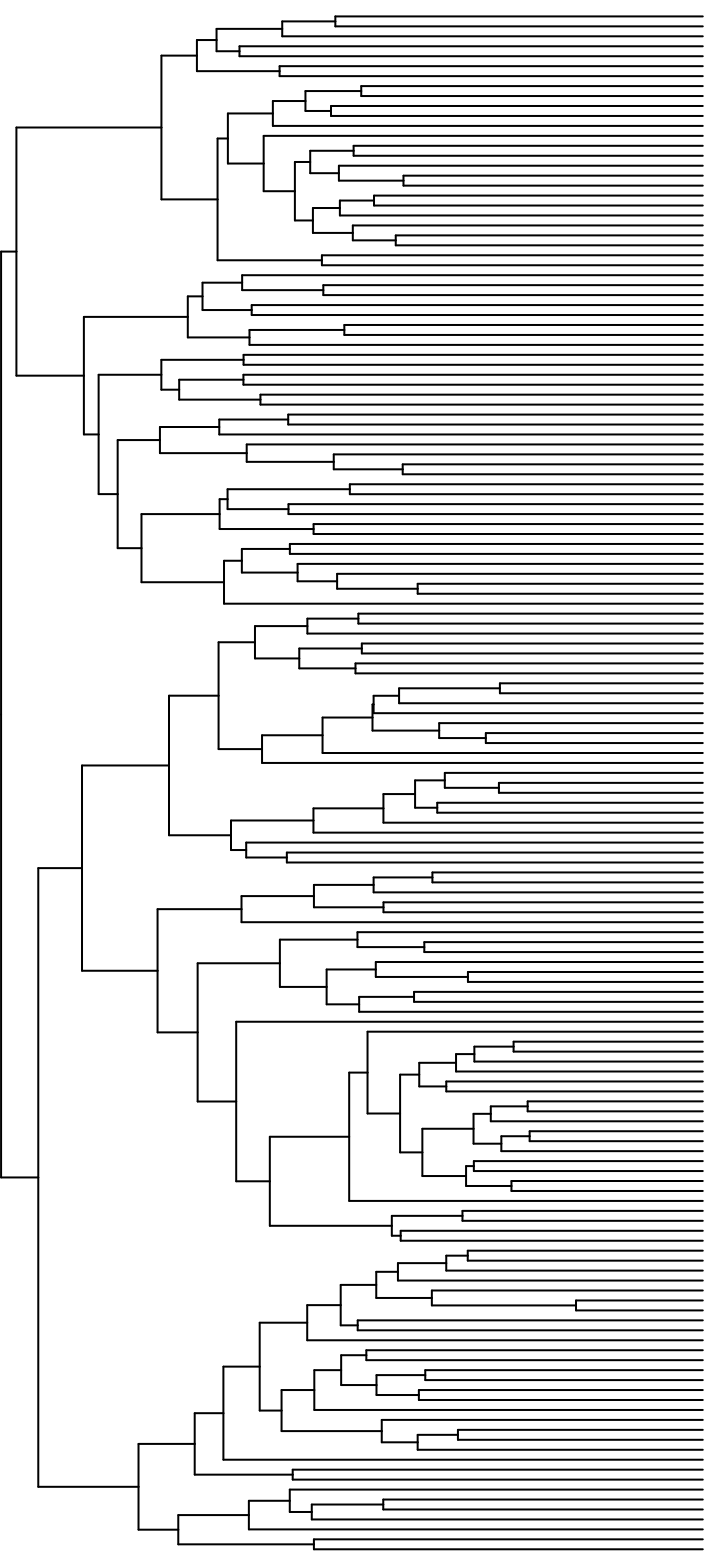
■ Case

ER+RT-

ER+RT+

ER-RT-

ER-RT+



CST3
RELL1
KJAA1324L
RND1B
RNLS
SLC22A4
MANTIC1
RERE
BTRC
ILMN_1907042
ILMN_1813191
FAA2
SPATA18
ZNF980
ILMN_2050790
SLC24A1
GIPC2
TTC8
SYB1
ELOVL5
KIF16B
STTL4
DNALI1
MKL2
MBOAT1
TRPS1
ILMN_1682894
TREF
PTPN1
KCNMB2
CPNE1
MLLT6
STARD3
REC8
EXOC2_2
RYALB
DSG2_2
RAB17_2
CDDC34
LOC10030918
EFNA1
C10orf16
ARPP19
DCBLD1
ILMN_1803743
NSL1
ZCCHC6
P16
ILMN_3240144
CEST1
TKA2
SLC29A4
GDPD5
ACCS
ACSS1
ZFP14
LCOB
MYO15B
ILMN_1682818
LUTS2
RBM51
BR
UCHL1
TTYH3
SNX8
PRKX
CBX2
PLEKH02
CD88
CD300A
RASSF2_2
LPT
TNFRSF1B
FGR
ARPC1B_2
HLA-DOB1
MCM6
CENPA
KIF20A
TYMS
CENPN
GINS3
PNP
PRAME
MYO10
SRGA1
DCN
TSSK
CXCL12
ENTPD1
ARHGAP24
RGS4
CXCR4
HLA-DQA2
C3
LGALS9
MYO1G
LTA
SLC22A6
WFDC21P
EGFL6
ST3GAL5
SEPT6
RLH
GIMAP7
LYL1
NRROS
SLC9A9
APBB1IP
IPR8
ARHGAP15
LRMP
CCR7
IL7R
AMICA1
GPSM3
FLCB2
AKNA
PIK3CD
TRK1
CCL19
PTGDS
ABISBP
PTGER4
FGAM1
ILMN_1719611
GLRX3
AIDA
ACTG1
OSTC
ILMN_1700950
GART
SLC3A2
GASH
GCSH
TOMM5
RPL6
RFC4
HNRNPA1
ALYREF
TUBB
HPS11
RPS16A
RPLP0
EF1B2_2
RPL18A
SDHAF3
TPM3
SNX7
ILMN_2343332
CASC4
RNF11
CLK1
DNAJB9
SERP1

Genes selcted from group:

■ ER+RT+ ■ ER+RT- ■ ER-RT- ■ ER+RT- combined with ER+RT+ controls