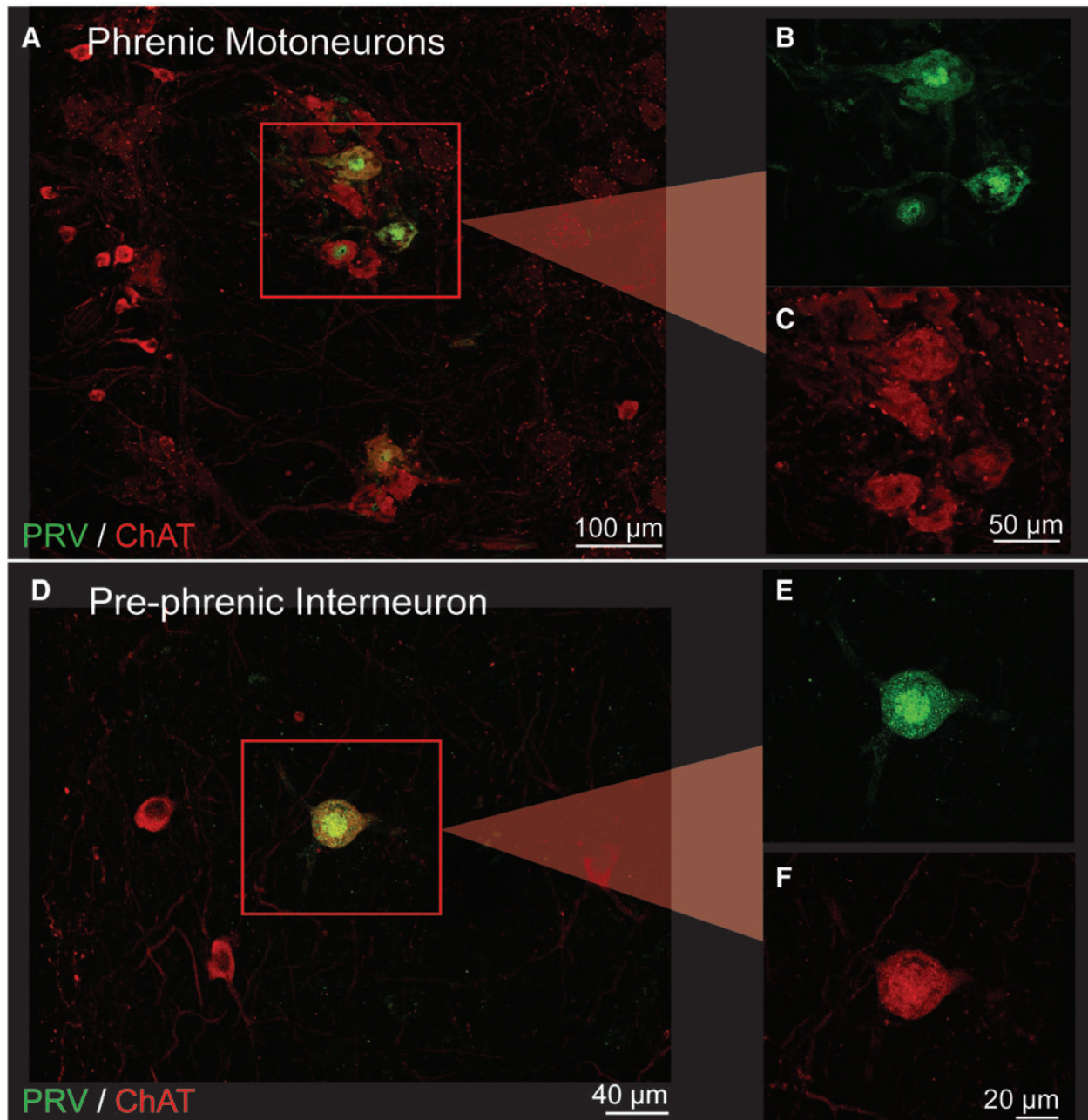


Supplementary Data



SUPPLEMENTARY FIG. S1. Cholinergic neurons in the naïve, phrenic circuit. Longitudinal section (40- μ m thickness) of the cervical spinal cord was immunohistochemically stained for PRV (green) and ChAT (red). Seventy-two hours after application of PRV to the diaphragm, first-order labeling can be seen in the phrenic motor pool (A–C). Phrenic motoneurons were identified by location (ventral horn of C3–C6), dual labeling of PRV and ChAT, and cell body size. High-power images of motoneurons appear in (B) and (C). In the intermediate gray matter, pre-phrenic (PRV-positive) interneurons were found bilaterally, a portion of which were also ChAT-positive (D–F). Scale bars are as indicated. ChAT, choline acetyltransferase; PRV, pseudorabies virus.