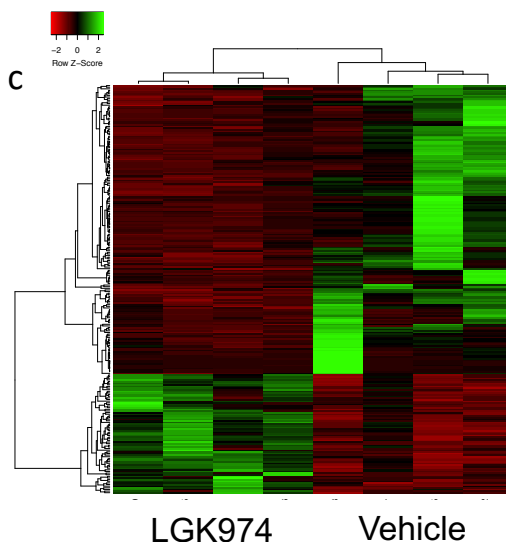
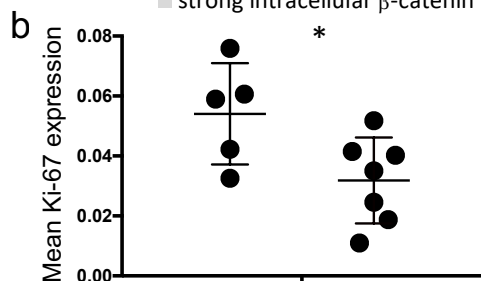
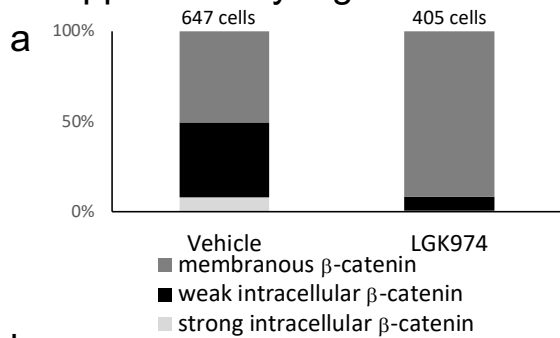
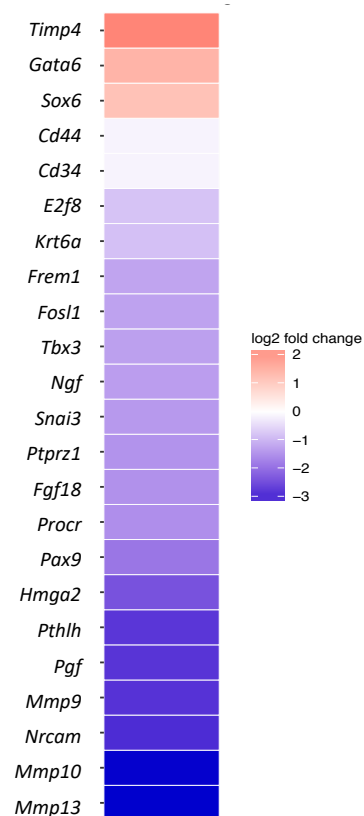


# Supplementary Figure 7



## e LGK974 vs Vehicle



## d

GO biological process complete: $p < 0.05$ vehicle vs Lgk974	Gene number	Expected number	Fold Enrichment	P value
positive regulation of keratinocyte migration	4	0.09	45.74	1.78E-02
positive regulation of cell proliferation	28	9.36	2.99	2.48E-03

