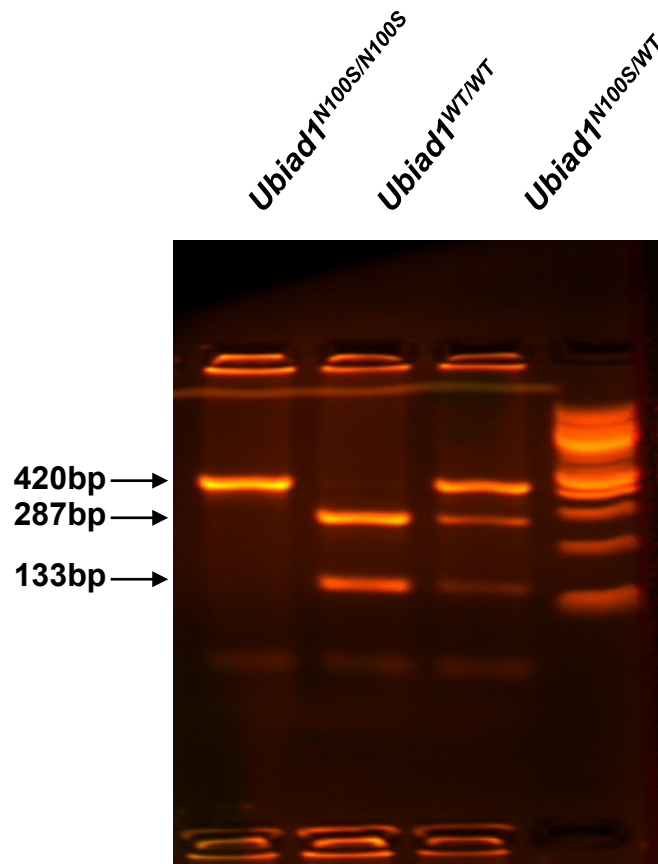


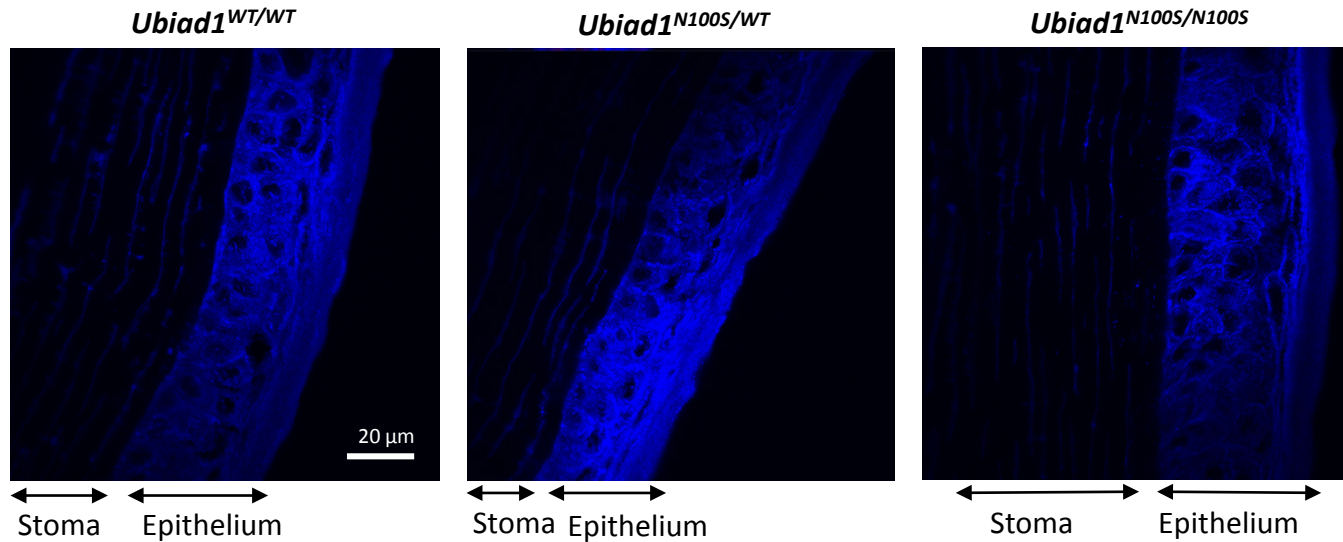
# **A Mouse Model of Schnyder Corneal Dystrophy with the N100S Point Mutation**

Fei Dong<sup>1#</sup>, Xueting Jin<sup>2#</sup>, Michelle A. Boettler<sup>1</sup>, Harrison Sciulli<sup>1</sup>, Mones Abu-Asab<sup>3</sup>, Christina Del Greco<sup>1</sup>, Shurong Wang<sup>1,4</sup>, Yueh-Chiang Hu<sup>5</sup>, Maria M. Campos<sup>3</sup>, Shelley N. Jackson<sup>6</sup>, Ludovic Muller<sup>6</sup>, Amina S. Woods<sup>6</sup>, Christian A. Combs<sup>7</sup>, Jianhua Zhang<sup>1</sup>, Michael L. Nickerson<sup>8</sup>, Howard S. Kruth<sup>2\*</sup>, Jayne S. Weiss<sup>9\*</sup>, Winston W. Kao<sup>1\*</sup>

1. Department of Ophthalmology, University of Cincinnati, Cincinnati, OH;
2. Laboratory of Experimental Atherosclerosis, National Heart, Lung, and Blood Institute, NIH, Bethesda, MD;
3. Histopathology Facility, National Eye Institute, NIH, Bethesda, MD
4. Ophthalmology, the Second Hospital of Jilin University, Changchun, Jilin, China;



**Supplementary Figure 1.** Full-length gel of mice tail PCR genotyping before being cropped and rearranged.



**Supplementary Figure 2.** Detection of cholesterol with filipin staining. Filipin staining only occurred in the epithelial layer of all mice regardless of genotype, but did not reveal any difference between *Ubiad1*<sup>N100S/N100S</sup>, *Ubiad1*<sup>N100S/WT</sup>, and *Ubiad1*<sup>WT/WT</sup> mice. Mice were 4-month-old males.