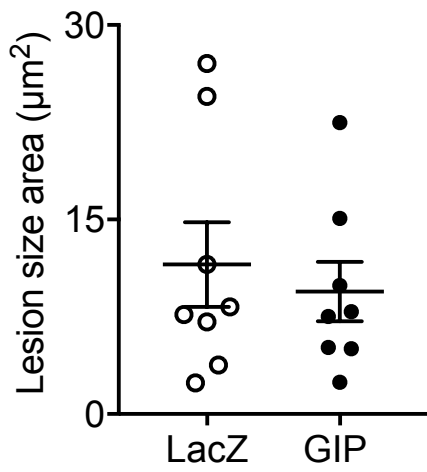
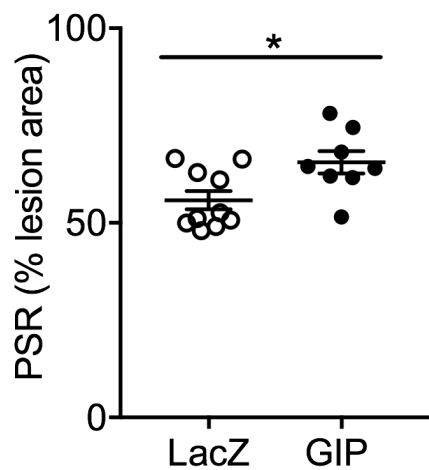


Figure S1



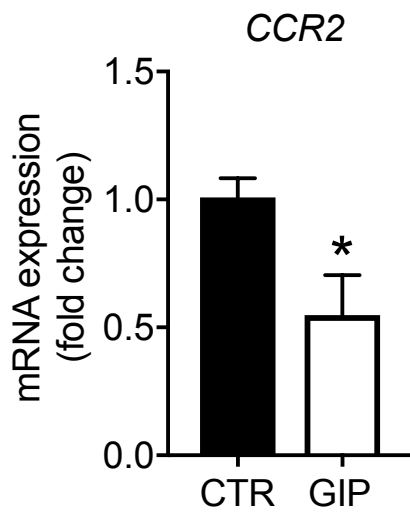
**Figure S1:** Quantification of atherosclerotic lesion size in the aortic arch in C57BL6 ApoE<sup>-/-</sup> mice after viral overexpression of GIP (1-42) visualized by H&E staining (n = 8). Results are expressed as the mean ± SEM.

Figure S2



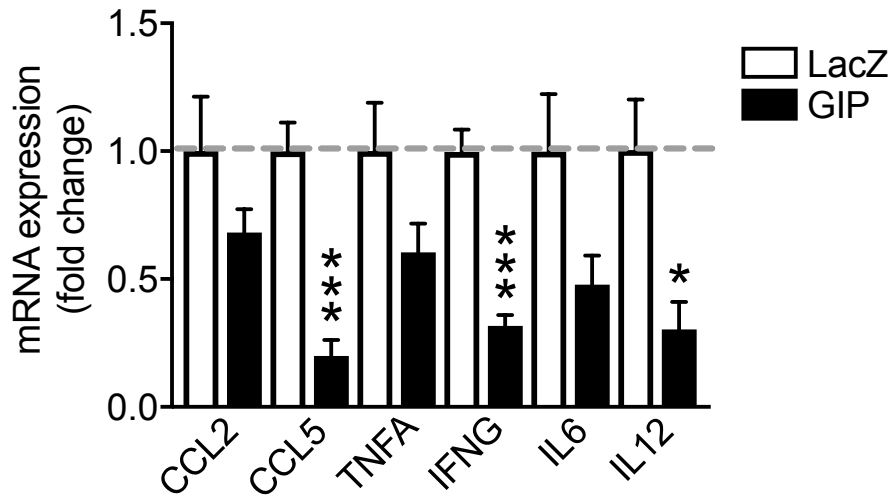
**Figure S2:** Quantification of plaque collagen content in the aortic root in C57BL6 ApoE<sup>-/-</sup> mice after viral overexpression of GIP (1-42) visualized by picosirius red staining (n = 8-10). Results are expressed as the mean ± SEM. \*p < 0.05 vs. LacZ

Figure S3



**Figure S3:** CCR2 mRNA expression by qPCR analysis in THP-1 monocytes 12h after stimulation with GIP (10 nM) (n = 4). Results are expressed as the mean  $\pm$  SEM. \* $p < 0.05$  vs. CTR

Figure S4



**Figure S4:** Liver mRNA expression profile after qPCR analysis at 12 weeks on western diet in ApoE<sup>-/-</sup> mice (n = 4-9). Results are expressed as the mean  $\pm$  SEM. \*p < 0.05; \*\*\*p < 0.001 vs. LacZ