

Supplemental Figure 2. Kidney allograft function progression according to the different immune assays.

S2a. Comparison between mean eGFR at 12 months, 24 months and 5 years according to incidence of acute rejection.

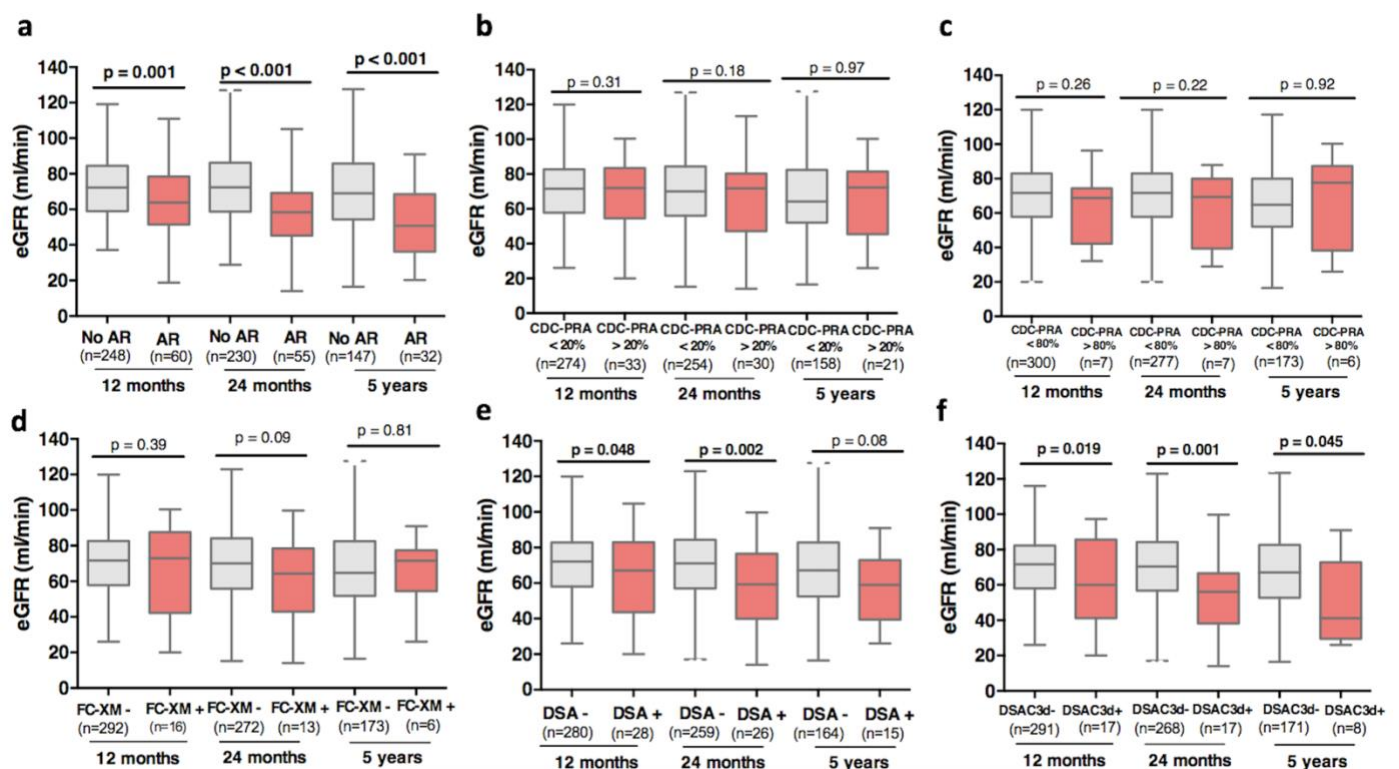
S2b. Comparison between mean eGFR at 12 months, 24 months and 5 years according to CDC-PRA (< or >20%).

S2c. Comparison between mean eGFR at 12 months, 24 months and 5 years according to CDC-PRA (< or >80%).

S2d. Comparison between mean eGFR at 12 months, 24 months and 5 years according to FC-XM positivity.

S3e. Comparison between mean eGFR at 12 months, 24 months and 5 years according to DSA positivity.

S3f. Comparison between mean eGFR at 12 months, 24 months and 5 years according to DSAC3d positivity.



eGFR: estimated glomerular filtration rate; AR: Acute rejection; CDC-PRA: complement dependent cytotoxicity panel reactive antibodies; FC-XM: flow cytometry crossmatch; DSA: donor specific antibody (solid phase assay); DSAC3d: C3d binding donor specific antibody.

* Patients not experiencing AR vs AR: 12months 73±19 vs 64±23 ml/min, p=0.001; 24months 73±20 vs 59±24ml/min, p<0.001; 5years 70±22 vs 53±24 ml/min, p<0.001. CDC-PRA <20% vs CDC-PRA>20%: 12months 72±20 vs 68±24 ml/min, p=0.31; 24months 71±21 vs 65±24 ml/min, p=0.17; 5years 67±23 vs 67±21 ml/min, p=0.94. CDC-PRA <80% vs CDC-PRA>80%: 12months 72±20 vs 63±21 ml/min, p=0.26; 24months 71±21 vs 61±24 ml/min, p=0.22; 5years 68±28 vs 66±23 ml/min, p=0.93. FC-XM- vs FC-XM+: 12months 72±20 vs 67±26 ml/min, p=0.39; 24months 71±21 vs 61±26 ml/min, p=0.09; 5years: 67±23 vs 65±22 ml/min, p=0.81. DSA- vs DSA+: 12months 72±20 vs 64±23 ml/min, p=0.048; 24 months 71±21 vs 58±23 ml/min, p=0.002; 5years 68±23 vs 57±20 ml/min, p=0.08. DSAC3d- vs DSAC3d+: 12months 72±20

vs 60 ± 24 ml/min, $p=0.019$; 24months 71 ± 21 vs 54 ± 23 ml/min, $p=0.001$, 5years 68 ± 23 vs 51 ± 24 ml/min, $p=0.045$.