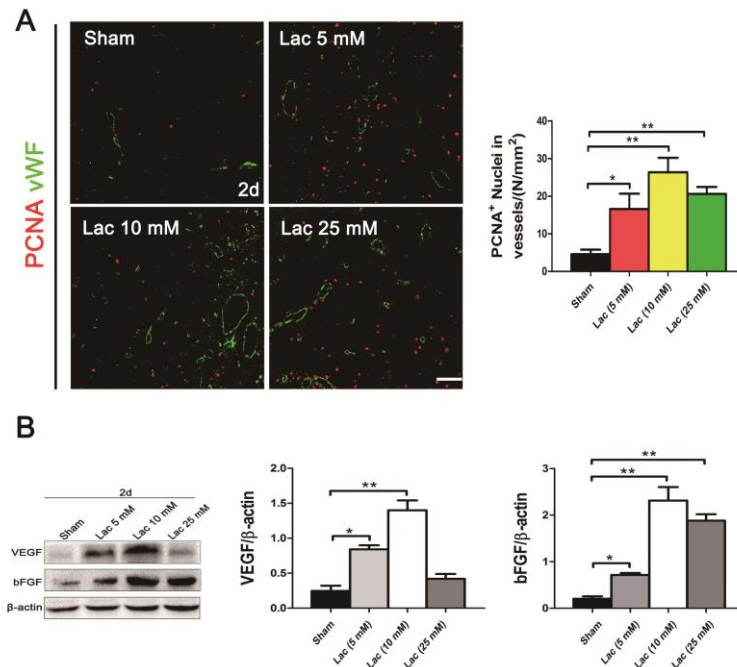
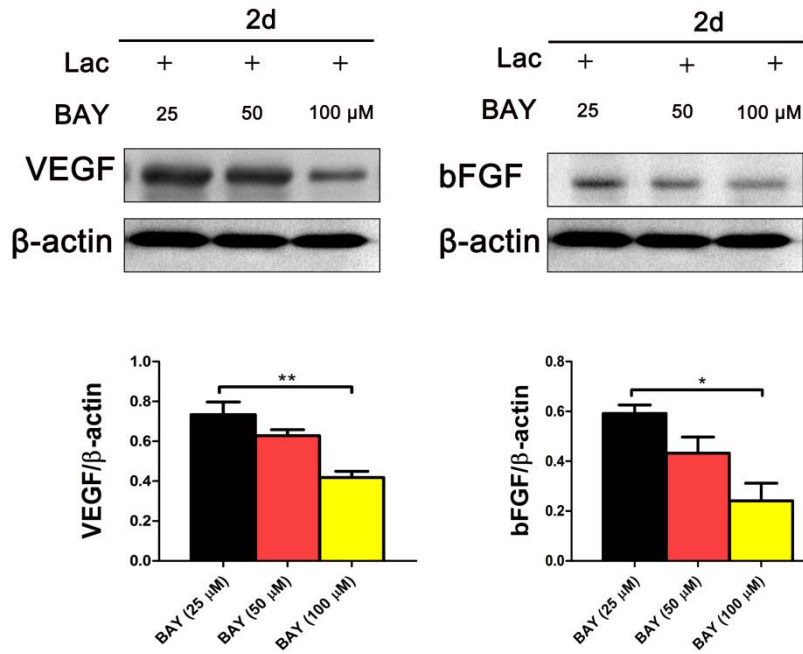


Supplementary materials



Supplementary Figure S1. (A) The numbers of PCNA⁺ nuclei in vWF⁺ dilated vessels were rarely observed in either hemisphere of the Sham controls on the day 2. Notably, PCNA⁺ nuclei in vWF⁺ dilated vessels appeared to be present around the L-lactate (5, 10 and 25 mM) - affected regions. (B) The expressions of VEGF were strikingly increased after 5 and 10 mM L-lactate infusion. The expressions of bFGF were strikingly increased after L-lactate infusion (5, 10 and 25 mM). The beneficial effects of 10 mM were more preminent. Lac: L-lactate. (n=5, * $p < 0.05$ and ** $p < 0.01$).



Supplementary Figure S2. Western blot showed that BAY inhibited the expressions of VEGF and bFGF in L-lactate group. The effects of 100 μ M BAY were most obvious. Lac: L-lactate; BAY: BAY11-7082. (n=5, * p <0.05 and ** p <0.01).