

**Migration of mesenchymal stem cells to tumor xenograft models and *in vitro* drug delivery
by doxorubicin**

Senthilkumar Kalimuthu, Liya Zhu, Ji Min Oh, Prakash Gangadaran, Ho Won Lee, Se hwan
Baek, Ramya Lakshmi Rajendran, Arunehru Gopal, Shin Young Jeong, Sang-Woo Lee, Jaetae
Lee, and Byeong-Cheol Ahn*

Department of Nuclear Medicine, School of Medicine, Kyungpook National University,
Kyungpook National University Hospital, Daegu, Republic of Korea

*Corresponding author

Prof. Byeong-Cheol Ahn., M.D., Ph.D.,

Department of Nuclear Medicine,

School of Medicine, Kyungpook National University,

Kyungpook National University Hospital,

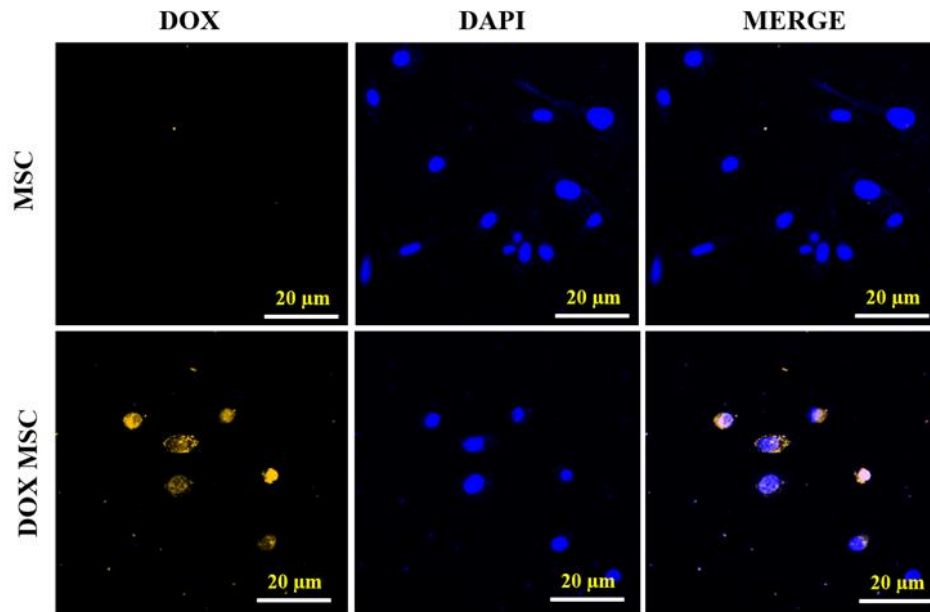
50, Samduk 2-ga, Jung Gu, Daegu-700-721, Republic of Korea.

Tel: 82-53-420-5583

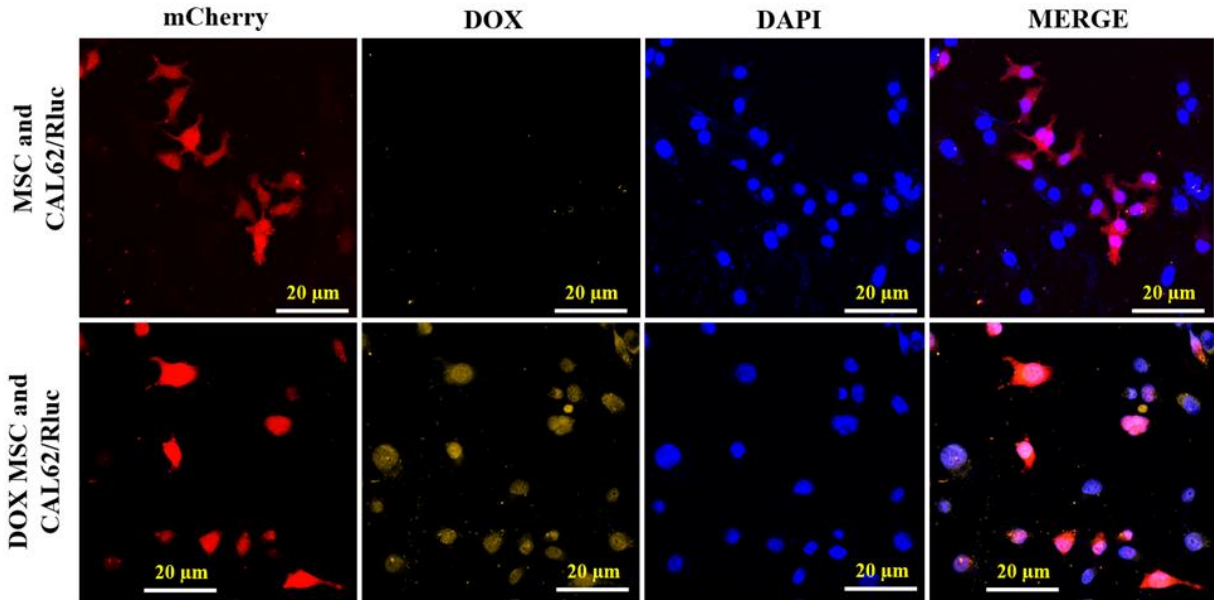
Fax: 82-53-422-0864

Email: abc2000@knu.ac.kr

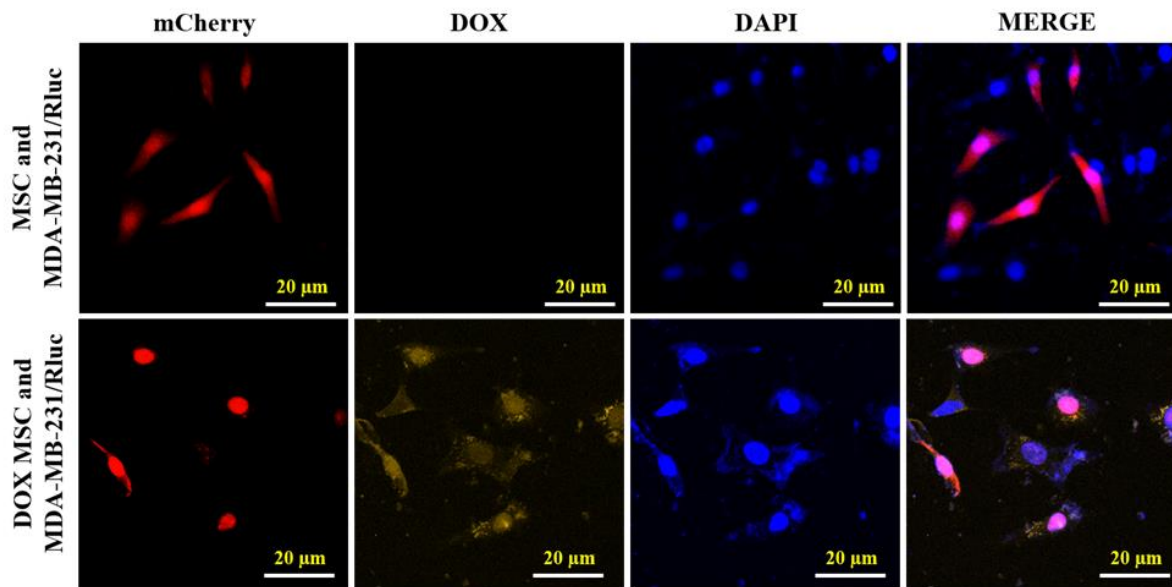
Supplementary Files



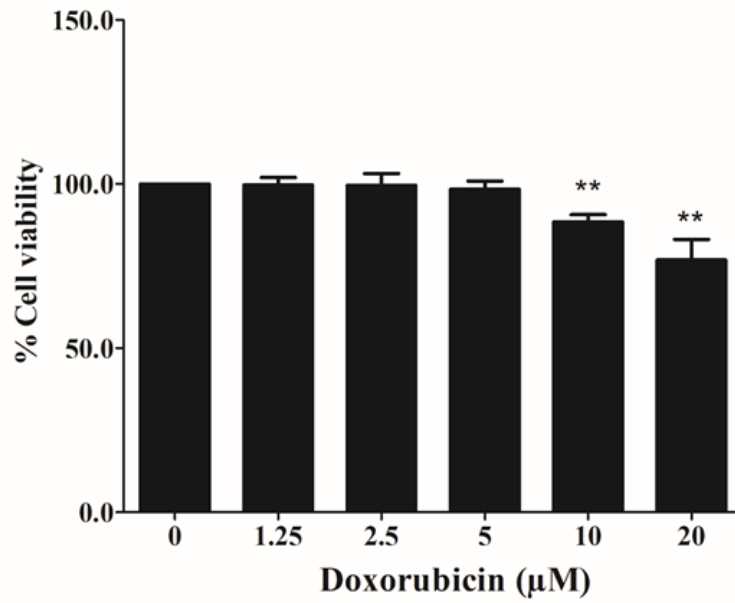
Suppl. Fig 1. DOX fluorescence in MSCs. DOX-pretreated MSCs were plated for 24 h, and the presence of DOX fluorescence was then visualized by confocal microscopy (20× magnification).



Suppl. Fig 2. Confocal microscopic image of Doxorubicin fluorescence in MSCs and MDA-MB-231/Rluc cells. DOX-pretreated MSCs and MDA-MB-231/Rluc cells were co-cultured for 24 h, and the DOX fluorescence in both cells was then visualized. MDA-MB-231/Rluc cells expressed mCherry, but the MSCs did not (20× magnification).



Suppl. Fig 3. Confocal microscopic image of doxorubicin fluorescence in MSCs and CAL62/Rluc cells. DOX-pretreated MSCs and CAL62/Rluc cells were co-cultured for 24 h, and the DOX fluorescence in both cells was visualized. MDA-MB-231/Rluc cells expressed mCherry, but the MSCs did not (20× magnification).



Suppl. Fig 4. Effect of DOX on MSC viability by CCK8 assay for 12 h. Data from three independent results were expressed as the means \pm standard deviation (SD), and a p -value < 0.05 was considered significant, according to the Student's t -test.