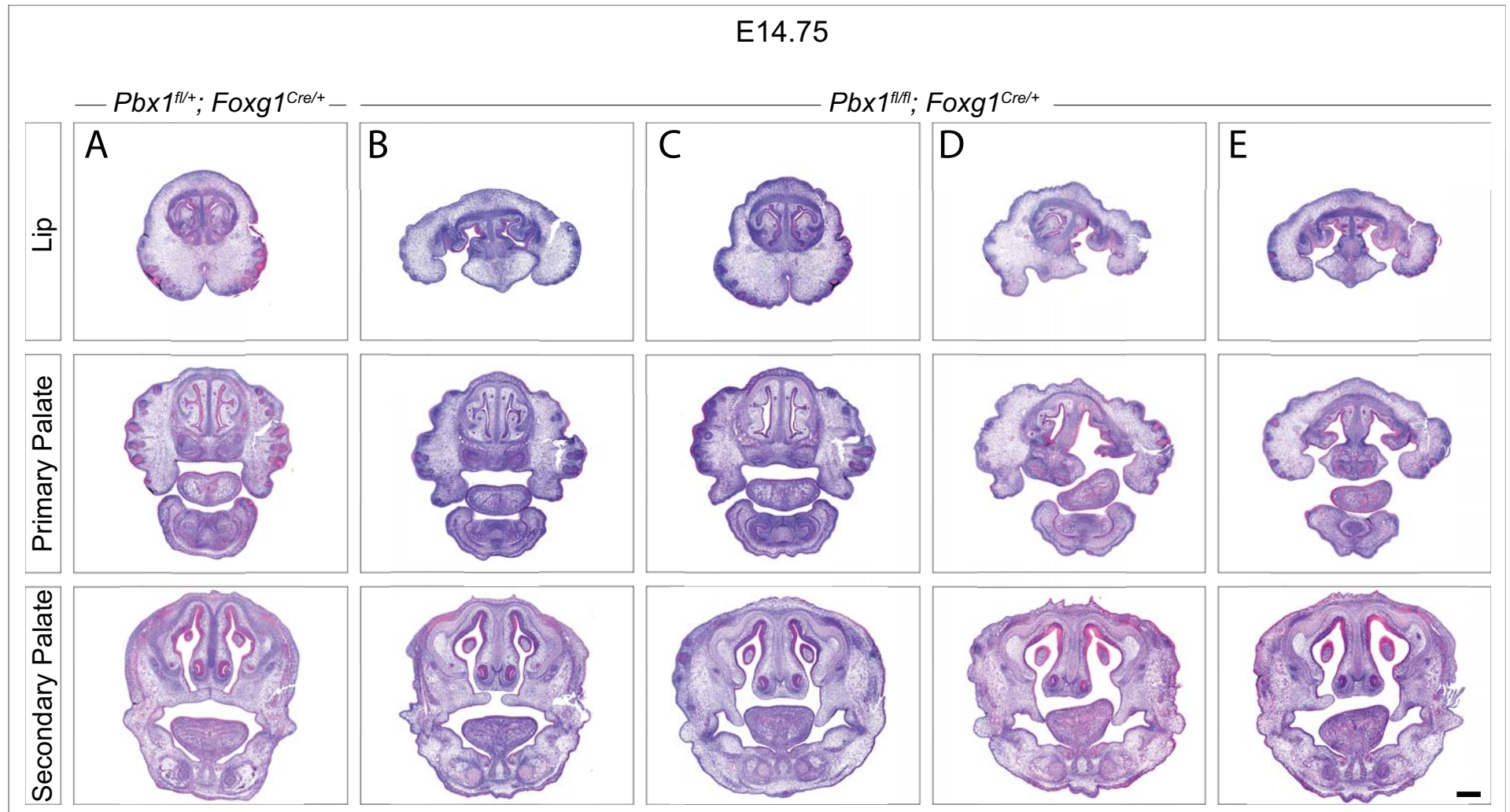


Supplementary Figure 7.



Supplementary Table 1:

	Unilateral Cleft Lip Normal Primary Palate Normal 2° Palate	Normal Lip Normal Primary Palate Cleft 2° Palate	Unilateral Cleft Lip Unilateral Cleft Primary Palate Cleft 2° Palate	Bitilateral Cleft Lip Bitilateral Primary Palate Cleft 2° Palate
N:	1	7	8	5
%:	5%	33%	38%	24%

Total number of *Pbx1*^{fl/fl}; *Foxg1*^{Cre/+} mutant embryos examined: 21
 Total number of litters/embryos* harvested: 11/102
 * no craniofacial defects were observed in littermate controls