

Table S1. Adjusted odds ratios for complement factors measured at 12-15 and 16-19 weeks based on multiple imputation to account for missing data^a

Predictor variable	Bb (12-15 weeks) ^b N=483 subjects, 98 events		Bb (16-19 weeks) ^c N= 473 subjects, 90 events		sC5b-9 (12-15 weeks) ^b N= 483 subjects, 98 events		sC5b-9 (16-19 weeks) ^c N= 473 subjects, 90 events	
	OR (95% CI)	P-value	OR (95% CI)	P-value	OR (95% CI)	P-value	OR (95% CI)	P-value
Non-Hispanic White (yes vs no)	0.62 (0.36-1.07)	0.086	0.63 (0.36-1.10)	0.11	0.60 (0.35-1.03)	0.064	0.61 (0.35-1.05)	0.076
SLE status (positive vs negative)	1.17 (0.54-2.56)	0.68	1.50 (0.66-3.43)	0.33	1.10 (0.50-2.40)	0.81	1.40 (0.62-3.17)	0.42
LAC status (positive vs negative)	5.23 (2.57–10.67)	<0.0001	5.11 (2.44–10.72)	<0.0001	5.94 (2.92-12.09)	<.0001	6.05(2.91-12.57)	<0.0001
History of thrombosis (yes vs no)	2.91 (1.48-5.71)	0.002	2.51 (1.22-5.18)	0.013	2.86 (1.46-5.61)	0.002	2.37 (1.17-4.81)	0.02
Diastolic pressure > 80 mm Hg (yes vs no)	3.52 (1.86-6.66)	0.0001	3.69 (1.91-7.14)	0.0001	3.43 (1.82-6.47)	0.0001	3.37 (1.77-6.39)	0.0002
Aspirin Use (yes vs no)	0.52 (0.30-0.91)	0.021	0.55 (0.31-0.97)	0.041	0.57 (0.33-0.99)	0.046	0.57 (0.33-1.00)	0.052
Current anti-hypertensive (yes vs no)	3.88(1.78–8.48)	0.0007	4.14 (1.87–9.17)	0.0005	4.18 (1.91-9.16)	0.0003	4.11 (1.89-8.94)	0.0002
BMI		0.076		0.15		0.03		0.04
< 25	1		1		1		1	
25-30	1.30 (0.70-2.42)		1.13 (0.54-2.19)		1.365(0.71-2.56)		1.21(0.63-2.35)	
> 30	1.83 (0.95-3.51)		1.69 (0.86-3.33)		2.03(1.05-3.91)		2.04 (1.06-3.94)	
Bb per SD increase ^d	1.32 (1.02-1.71)	0.032	1.48 (1.13-1.94)	0.005	-----		-----	
sC5b-9 per SD increase ^d	-----		-----		1.36 (1.05-1.76)	0.018	1.22 (0.93-1.60)	0.15
Hosmer-Lemeshow Goodness-of-fit test	0.36		0.67		0.68		0.46	
AUC	0.81		0.80		0.80		0.79	
Cross-validated AUC	0.78		0.77		0.78		0.75	

^a Missing data in the predictor variables was addressed using the Markov chain Monte Carlo multiple imputation approach in the SAS procedure, PROC MI (version 9.4). Forty imputed data sets were generated for each model and results were combined with PROC MIANALYZE. Imputation model included outcome variable, predictor variables, and complement factors measured at the first three visits during pregnancy

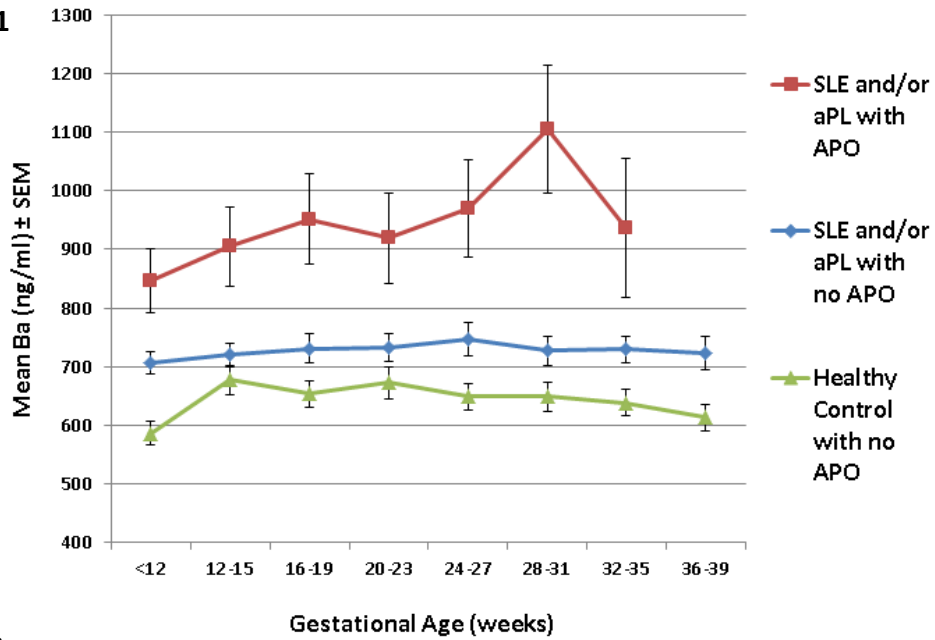
^b Subjects with APO before 15 weeks were excluded

^c Subjects with APO before 19 weeks were excluded

^d SD for Bb = 0.38 µg/ml at 12-15 weeks and 0.37 µg/ml at 16-19 weeks; SD for sC5b9 = 200 ng/ml at 12-15 weeks and 220 ng/ml at 16-19 weeks

Supplementary Figures

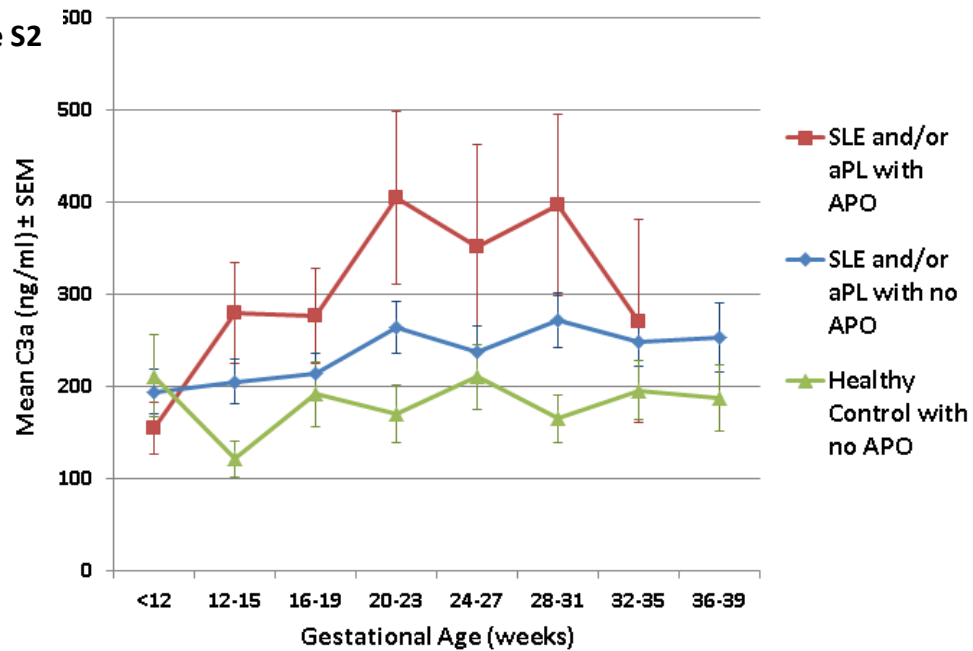
Figure S1



Sample size

	<12	12-15	16-19	20-23	24-27	28-31	32-35	36-39
SLE and/or aPL with APO	51	53	47	45	40	34	24	-
SLE and/or aPL with no APO	217	222	220	240	206	221	219	123
Healthy Control	65	115	125	119	111	116	115	102

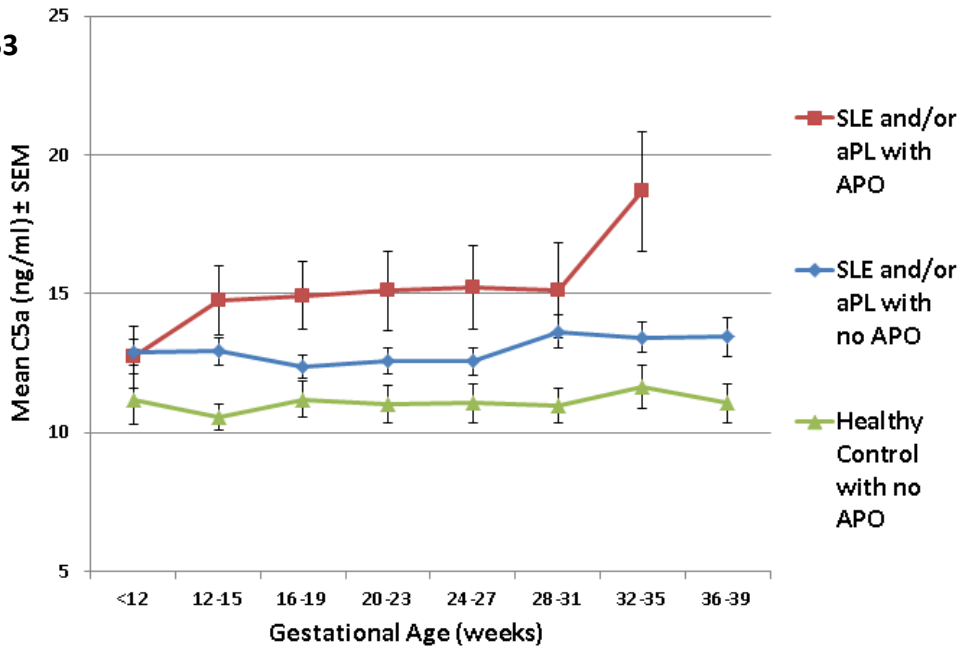
Figure S2



Sample size

	<12	12-15	16-19	20-23	24-27	28-31	32-35	36-39
SLE and/or aPL with APO	66	71	63	62	51	43	27	-
SLE and/or aPL with no APO	264	271	272	288	261	270	270	151
Healthy Control	90	149	155	149	145	152	145	122

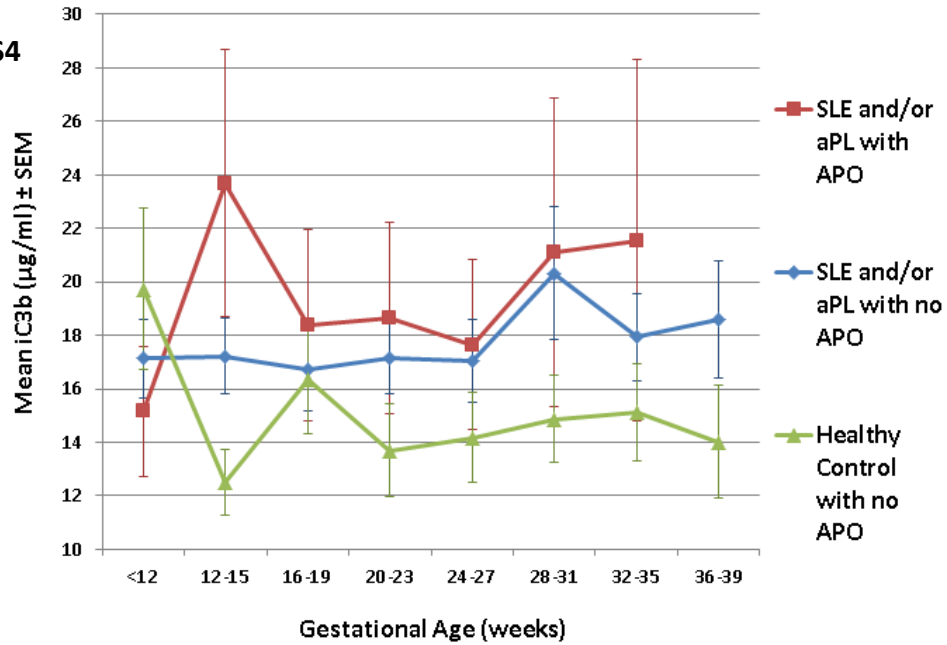
Figure S3



Sample size

SLE and/or aPL with APO	64	69	62	59	50	42	27	
SLE and/or aPL with no APO	245	260	260	281	254	261	264	148
Healthy Control	83	148	154	149	139	149	142	120

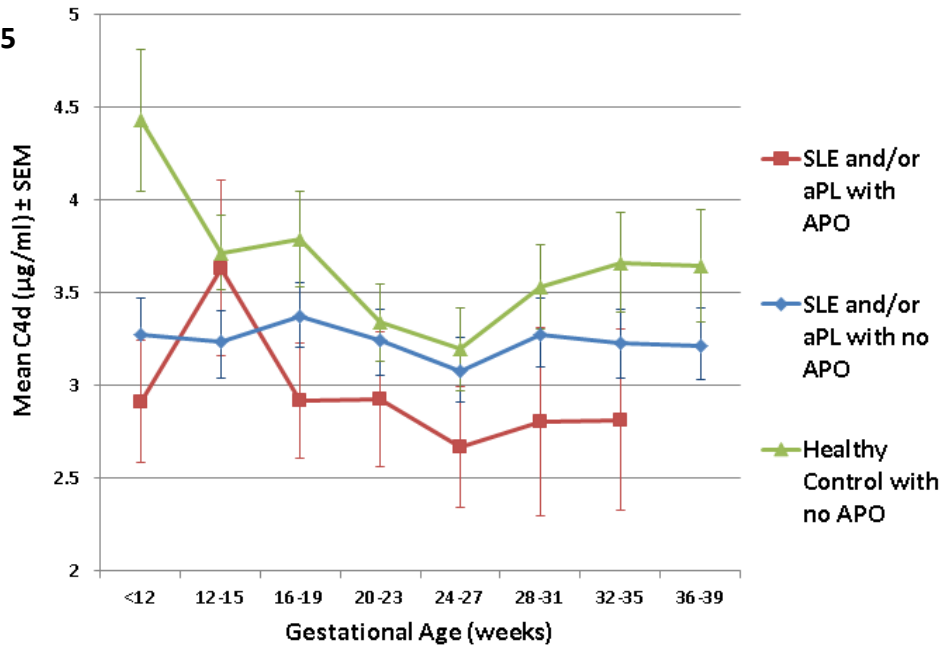
Figure S4



Sample size

SLE and/or aPL with APO	63	69	63	59	50	41	26	
SLE and/or aPL with no APO	249	263	262	284	251	261	265	149
Healthy Control	90	148	153	147	142	151	143	121

Figure S5



Sample size

SLE and/or aPL with APO	65	68	63	60	51	40	27	
SLE and/or aPL with no APO	251	266	264	280	254	265	266	150
Healthy Control	88	149	155	148	142	150	144	122