

Table S1: Individual Subject Data and Appearance in Figures/Tables. Individual subjects are listed with key demographic data. Appearance in figures and tables denoted by shaded boxes.

Subject #	Group	Age (years)	Sex	Virus	Fig 1	Fig 2	Fig 3	Fig 4	Fig 5	Fig 6	Fig S1	Fig S2	Fig S3	Table 1	Table 2		
NIV 102	Noninvasive Ventilation	2.00	F	RSV													
NIV 103		0.58	F	HMPV													
NIV 105		1.17	F	Adenovirus and Rhino/Enterovirus													
NIV 108		0.13	M	RSV													
NIV 109		0.06	F	Rhino/Enterovirus													
NIV 110		0.50	M	RSV													
NIV 111		0.17	M	RSV and Rhino/Enterovirus													
NIV 112		0.17	M	HMPV and Rhino/Enterovirus													
NIV 113		0.50	M	RSV													
NIV 114		0.07	M	RSV													
NIV 115		0.58	F	RSV													
NIV 116		0.08	F	RSV													
NIV 117		1.75	M	RSV and Coronavirus HKU1													
NIV 118		0.17	F	RSV													
NIV 119		0.50	M	RSV and Coronavirus NL63													
NIV 120		0.33	M	RSV													
NIV 121		0.33	M	HMPV													
NIV 122		0.06	M	Parainfluenza 2													
NIV 123		2.00	M	Parainfluenza 2													
NIV 124*		0.75	F	RSV													
NIV 125		2.00	M	RSV													
NIV 127		0.16	F	RSV													
NIV 129		3.00	F	RSV													
NIV 130*		3.00	M	RSV													
NIV 131		0.17	M	RSV													
NIV 132		0.33	M	RSV													
NIV 134		0.08	F	RSV													
NIV 135		0.92	M	RSV													
NIV 136		1.50	M	RSV													
NIV 137		0.75	F	RSV													
NIV 140		0.17	M	Rhino/Enterovirus													
NIV 143		3.00	M	Parainfluenza 1 and Rhino/Enterovirus													
NIV 147		1.00	M	RSV													
NIV 148		0.30	F	RSV													
ETT 042		Invasive w/ PARDS	1.00	M	HMPV												
ETT 043			0.21	M	Coronavirus NL63												
ETT 046			6.00	F	RSV												
ETT 047			6.00	M	HMPV												
ETT 048			10.00	F	Rhino/Enterovirus												
ETT 083			2.00	F	Rhino/Enterovirus												
ETT 084	0.33		M	RSV													
ETT 088	0.17		M	RSV													
ETT 090	1.00		M	HMPV													
ETT 103	1.00		M	RSV													
ETT 104	0.30		M	RSV													
ETT 105	1.00		F	Influenza B													
ETT 118	0.25		F	RSV													
NIV 142	0.25		M	RSV and Coronavirus HKU1													
ETT 078	Invasive - no PARDS		2.00	M	HMPV												
ETT 081			0.67	M	HMPV												
ETT 086		0.03	F	RSV													
ETT 095		0.83	F	Rhino/Enterovirus													
ETT 096		0.15	M	RSV													
ETT 097		1.00	M	Parainfluenza 2													
ETT 100		0.30	M	Coronavirus OC43													
ETT 106		0.30	F	RSV													
ETT 107		1.00	F	Parainfluenza 3													
ETT 108		0.67	M	Rhino/Enterovirus													
ETT 110	0.08	M	RSV														
ETT 111	0.08	M	RSV														
ETT 113	2.00	M	Coronavirus NL63														
ETT 116	1.50	M	Adenovirus														
FLD 001		28.00	M	na													
FLD 002		27.00	F	na													
FLD 003		28.00	M	na													
FLD 004		32.00	M	na													
FLD 005		28.00	F	na													
FLD 006		35.00	M	na													
AUD 060		1.25	M	na													
AUD 061		2.00	M	na													
AUD 062		2.00	M	na													
AUD 063		0.42	M	na													
AUD 064		4.30	M	na													

*Denotes subject meeting criteria for "At-risk PARDS", data analyzed with PARDS group

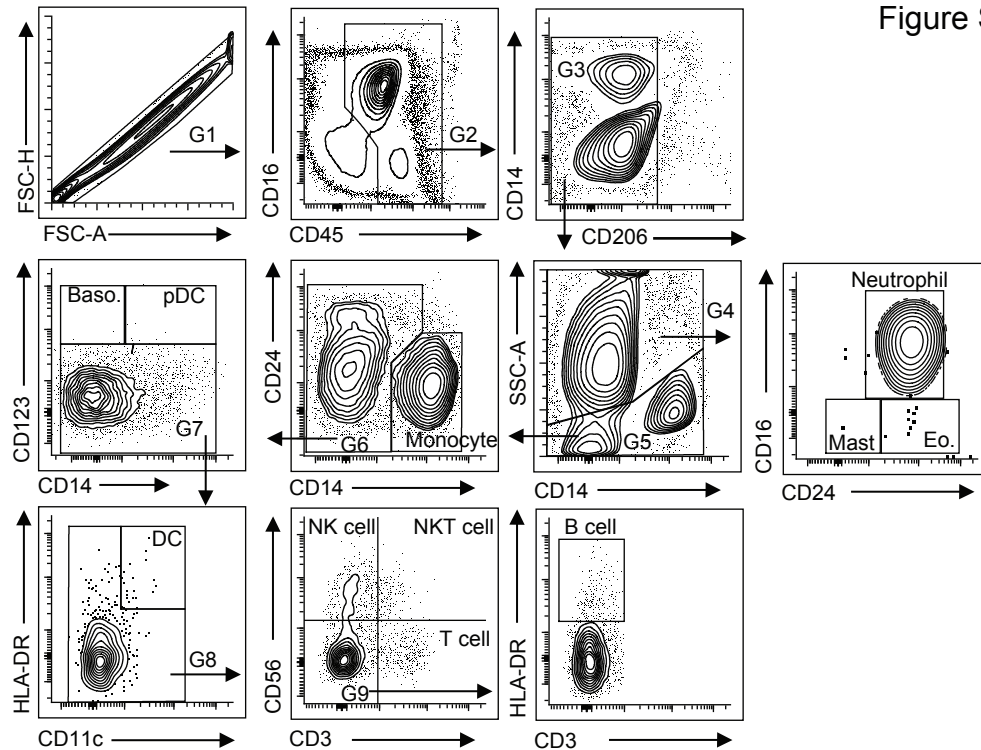


Figure S1: Myeloid Cell gating strategy. Single cells selected by forward scatter properties (G1). Cells from G1 gated for expression of CD45⁺ and CD16^{+/−} (G2). Cells from G2 gated by CD206[−] and CD14^{+/−} (G3). Cells from G3 shown by expression of side scatter and CD14 and gated as G4 = side scatter high, CD14^{+/−} and G5 = side scatter low, CD14^{+/−}. Cells gated as G4 shown by expression of CD16 and CD24; Neutrophils gated as CD16⁺ CD24⁺, Eosinophils gated as CD16[−] and CD24⁺, and Mast Cells gated as CD16[−] and CD24[−]. Cells gated as G5 shown by expression of CD24 and CD14; Monocytes gated as CD14⁺ and remaining gated as G6 = CD24^{+/−} and CD14⁺. Cells gated as G6 shown by expression of CD123 and CD14; Basophils gated as CD123⁺ and CD14[−], plasmacytoid dendritic cells gated as CD123⁺ and CD14⁺, remaining cells (CD123[−] and CD14^{+/−}) gated as G7. Cells gated as G7 depicted by expression of HLA-DR and CD11c with Dendritic Cells gated as HLA-DR⁺ and CD11c⁺ with remaining cells gated as G8. Cells gated as G8 shown by expression of CD56 and CD3 with NK cells gated as CD56⁺ and CD3[−], and NK T cells gated as CD56⁺ and CD3⁺, T cells gated as CD56[−] and CD3⁺ with remaining cells gated as G9. Cells gated from G9 depicted by expression of HLA-DR and CD3 with B cells gated as HLA-DR⁺ and CD3[−].

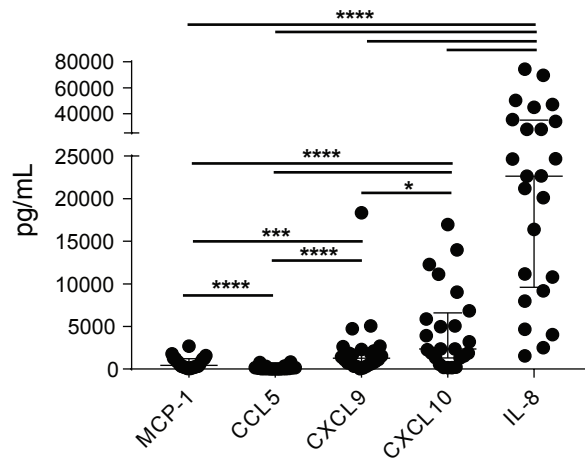


Figure S2: IL-8 is the predominant cytokine in the URT during pediatric VRTI. Graph shows chemokine concentration (pg/mL) in the URT during the first 48 hours of study enrollment compiled from 24 subjects. P values obtained by Wilcoxon matched pairs signed rank test. P values represented by *; (* = $p < 0.05$, *** = $p < 0.001$, **** = $p < 0.0001$).

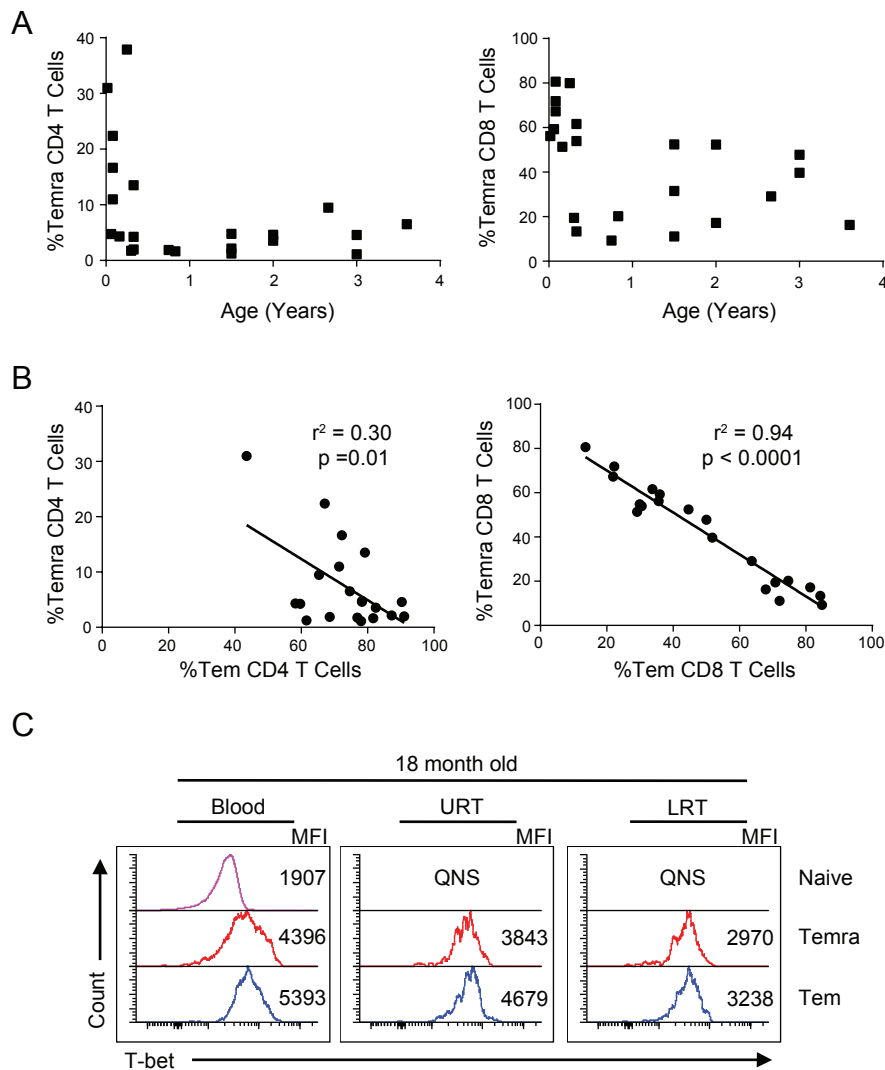


Figure S3: Characteristics of local Tem and Temra responses during VRTI. (A) Depicts proportions of Temra cells found in the URT during VRTI as a function of subject age for CD4⁺ (left) and CD8⁺ (right) T cells (n=20). (B) Depicts proportions of Temra (y axis) and Tem (x axis) subsets in the URT during VRTI among CD4⁺ (left) and CD8⁺ (right) T cells (n=20). Statistical analysis performed using linear regression. (C) Representative paired samples from a single infected subject demonstrating expression of T-bet (x axis) with stated median fluorescence intensity (MFI) on T cell subsets; Naïve (top), Temra (middle), and Tem (bottom). QNS = quantity not sufficient.