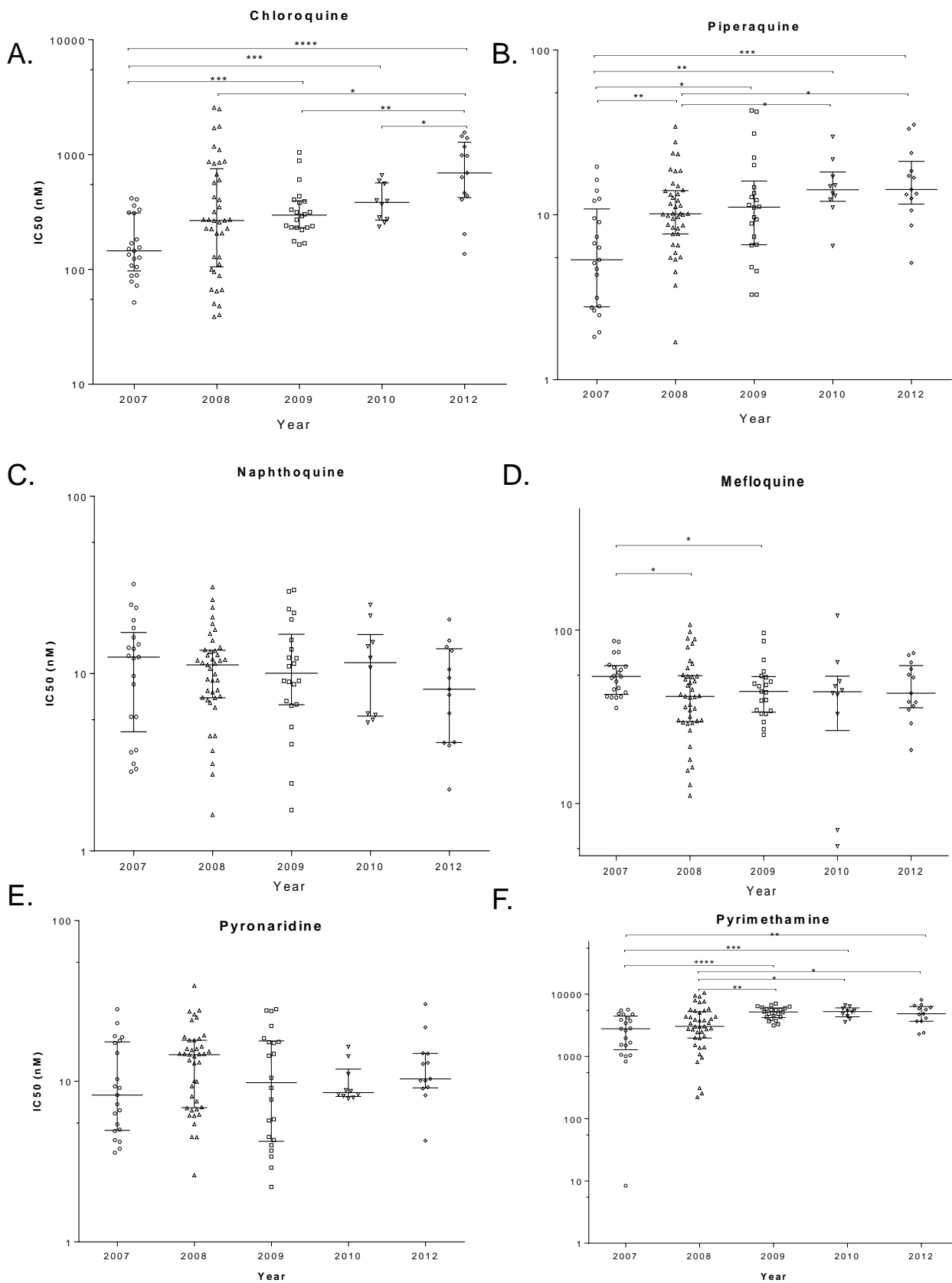
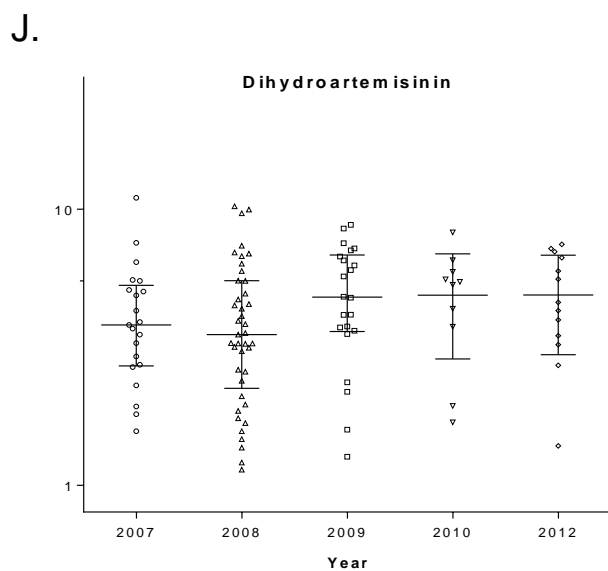
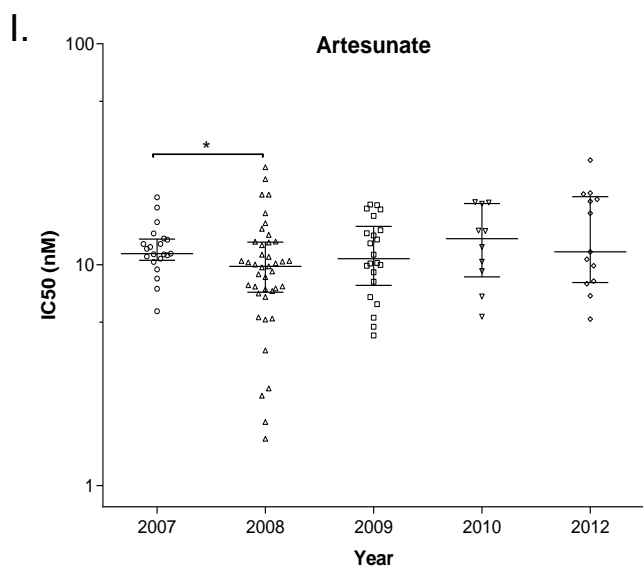
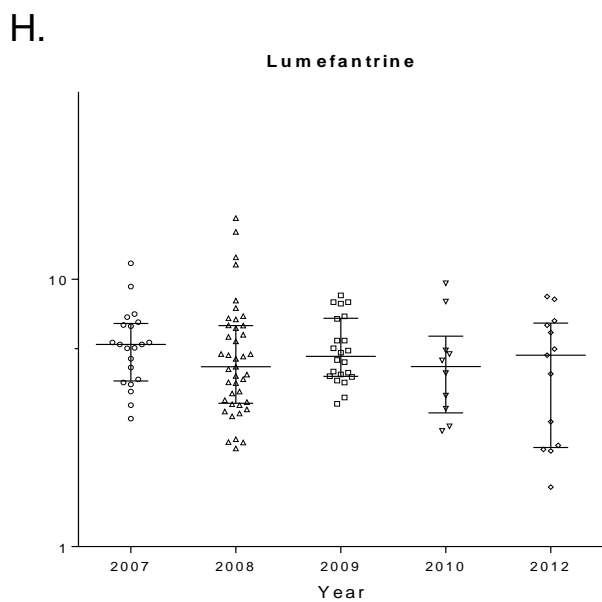
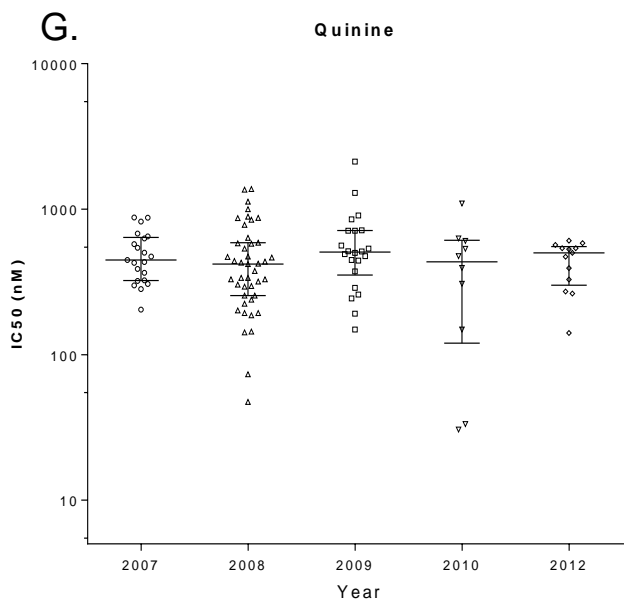
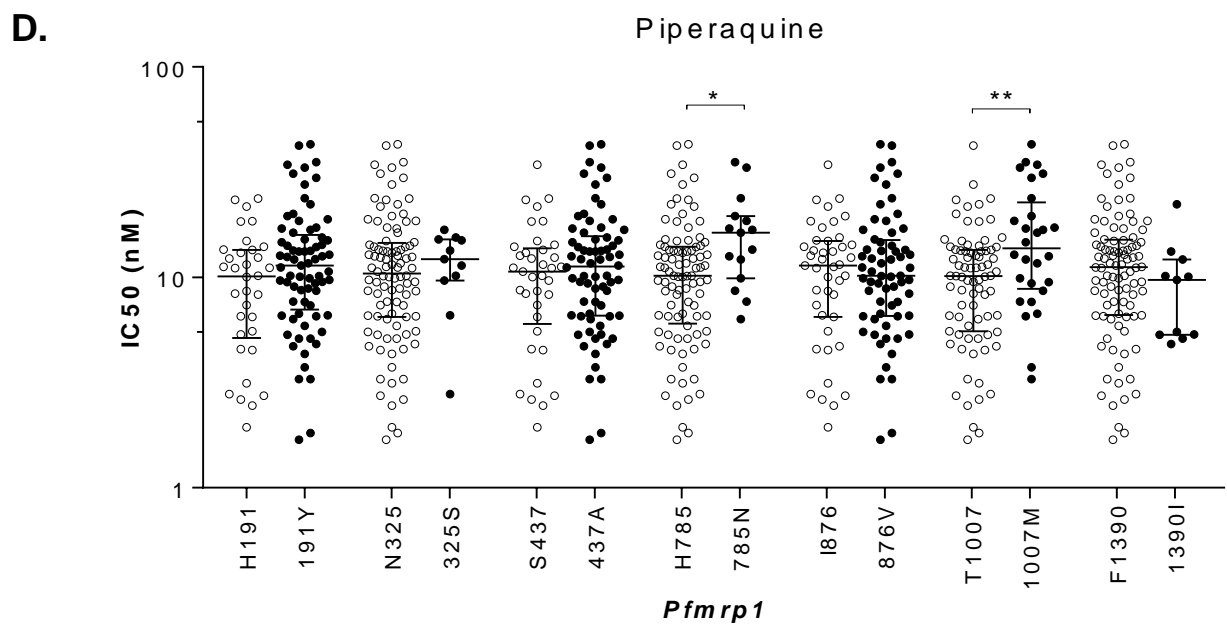
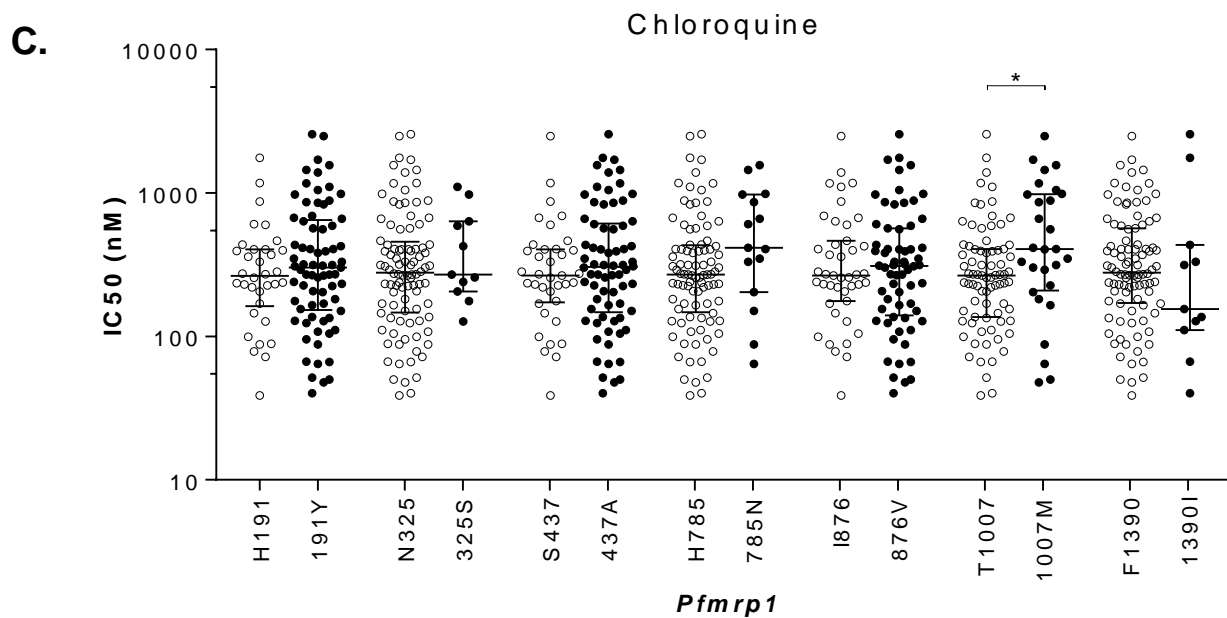
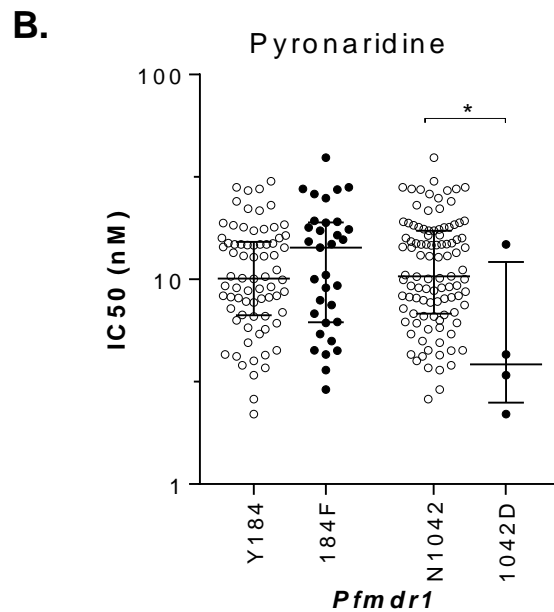
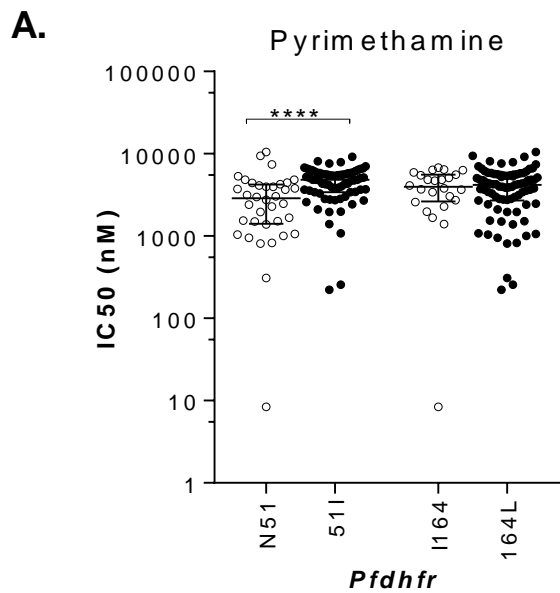
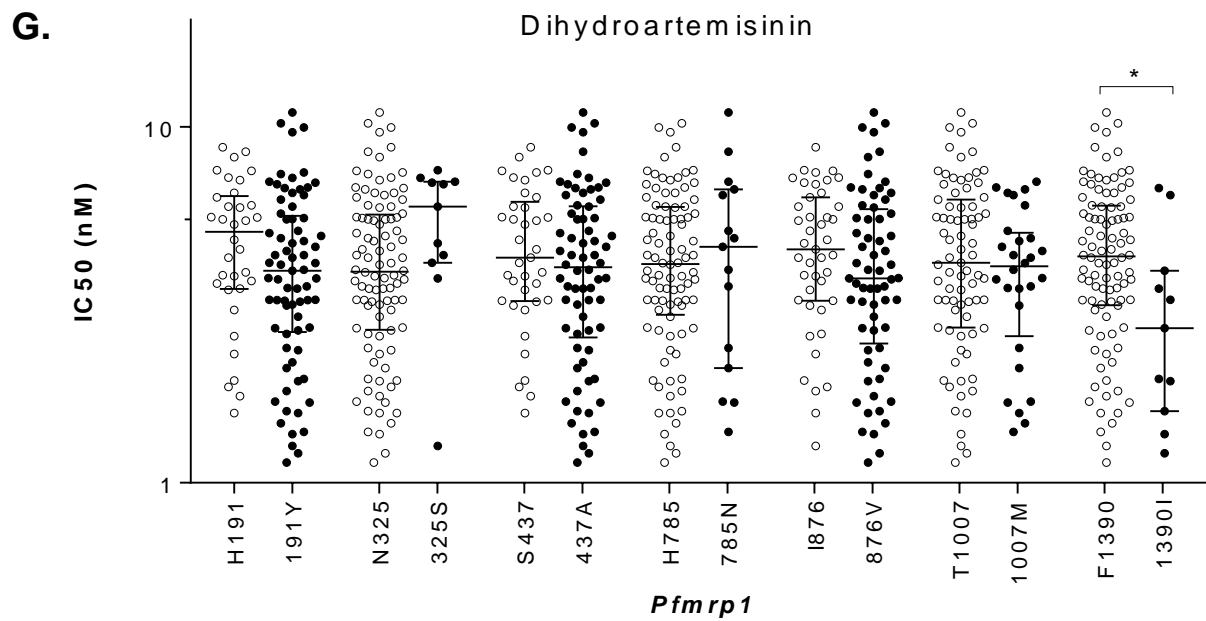
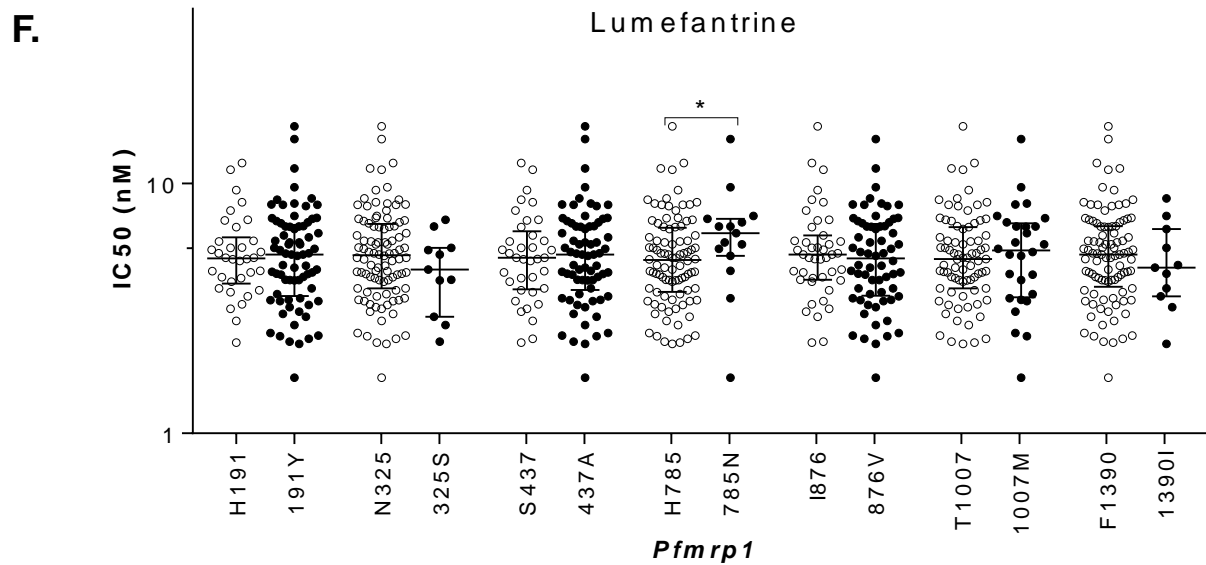
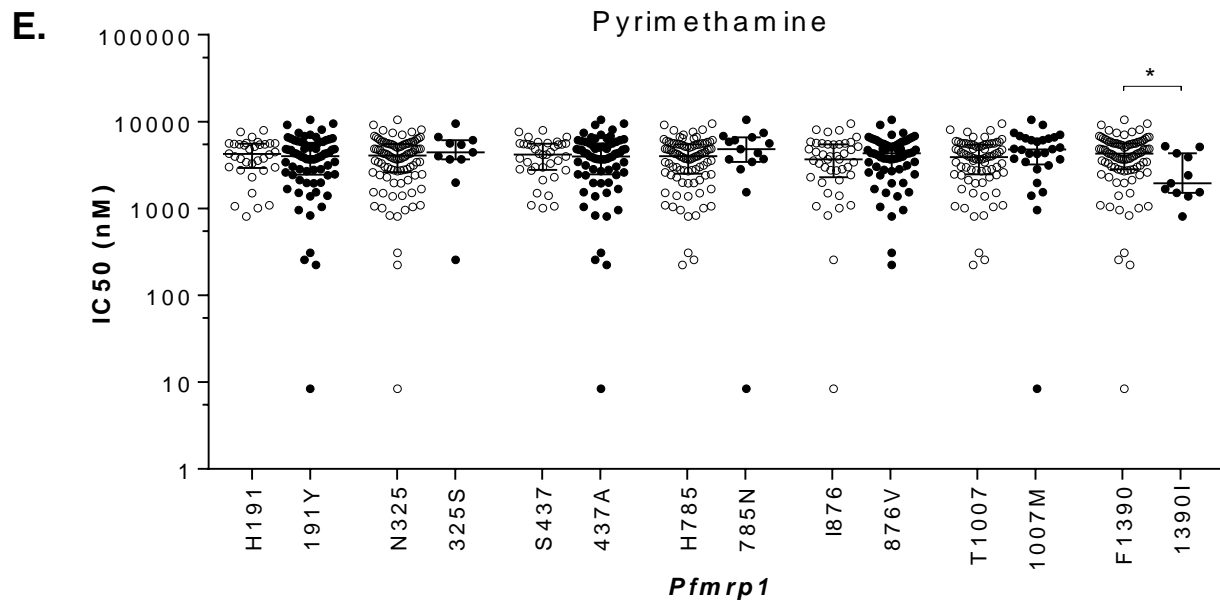


Fig. S1

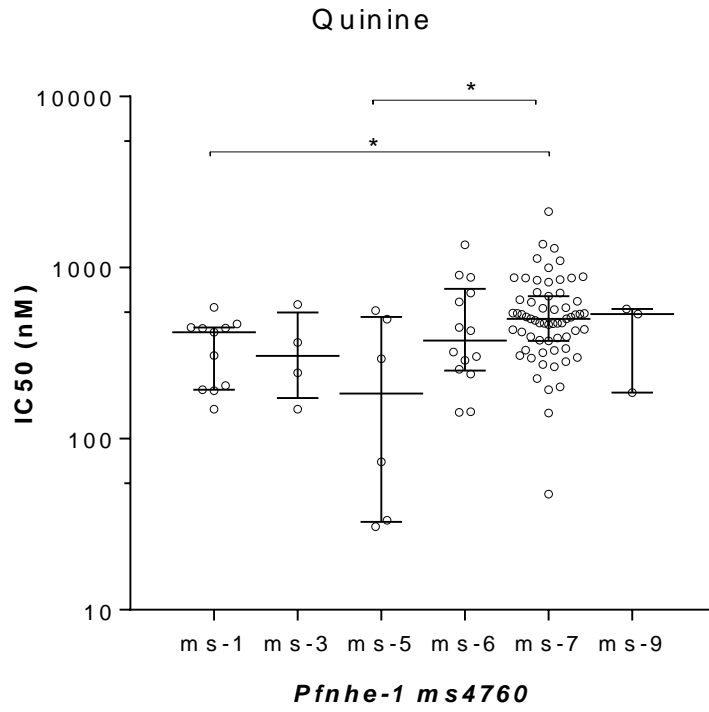




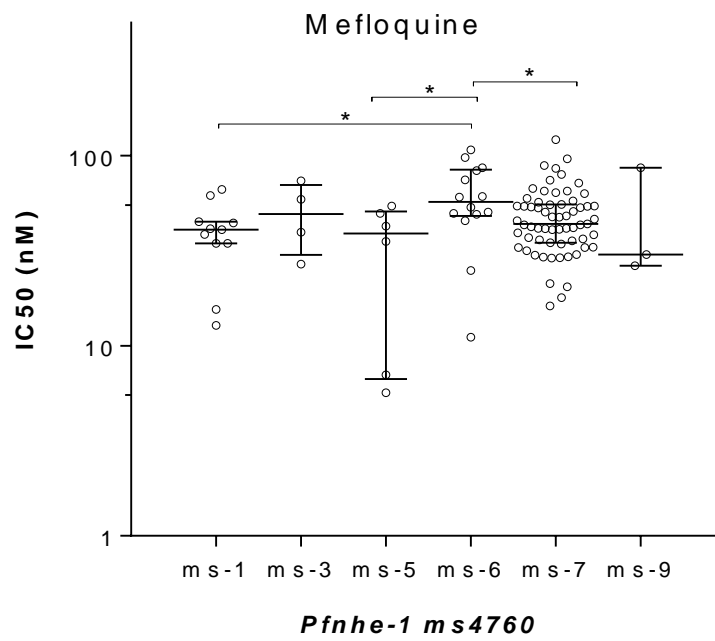




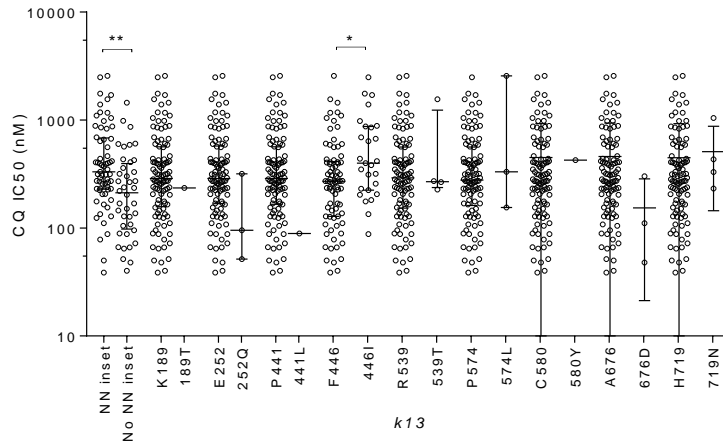
H.



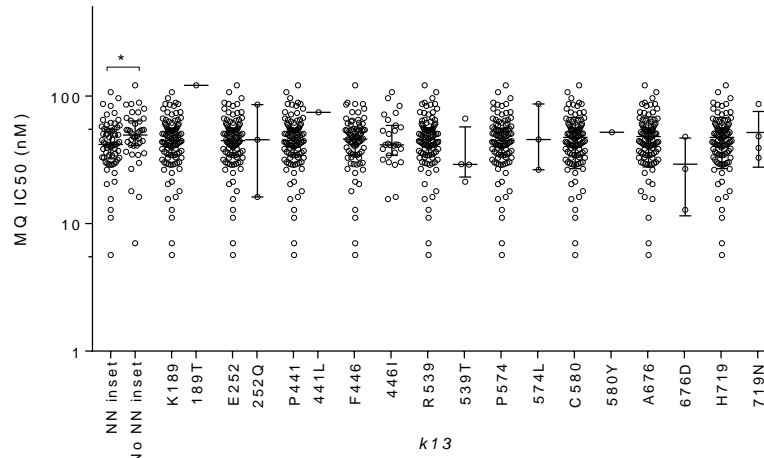
I.



J



K



L

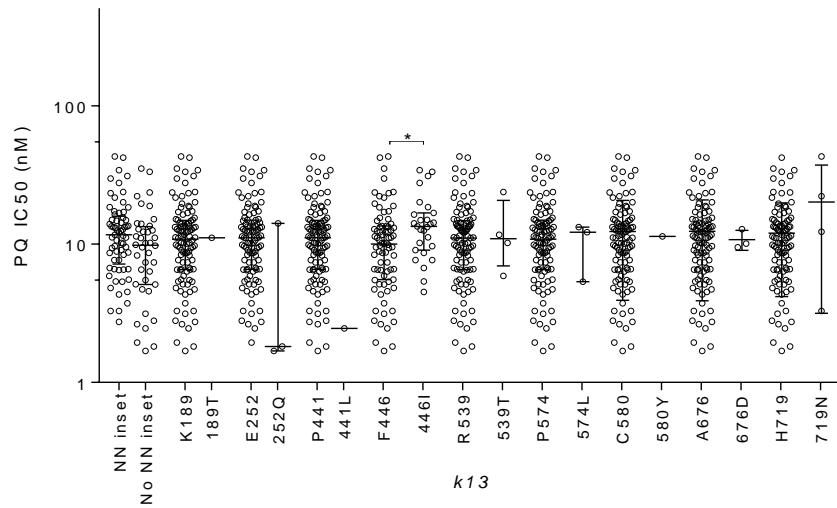


Figure S3

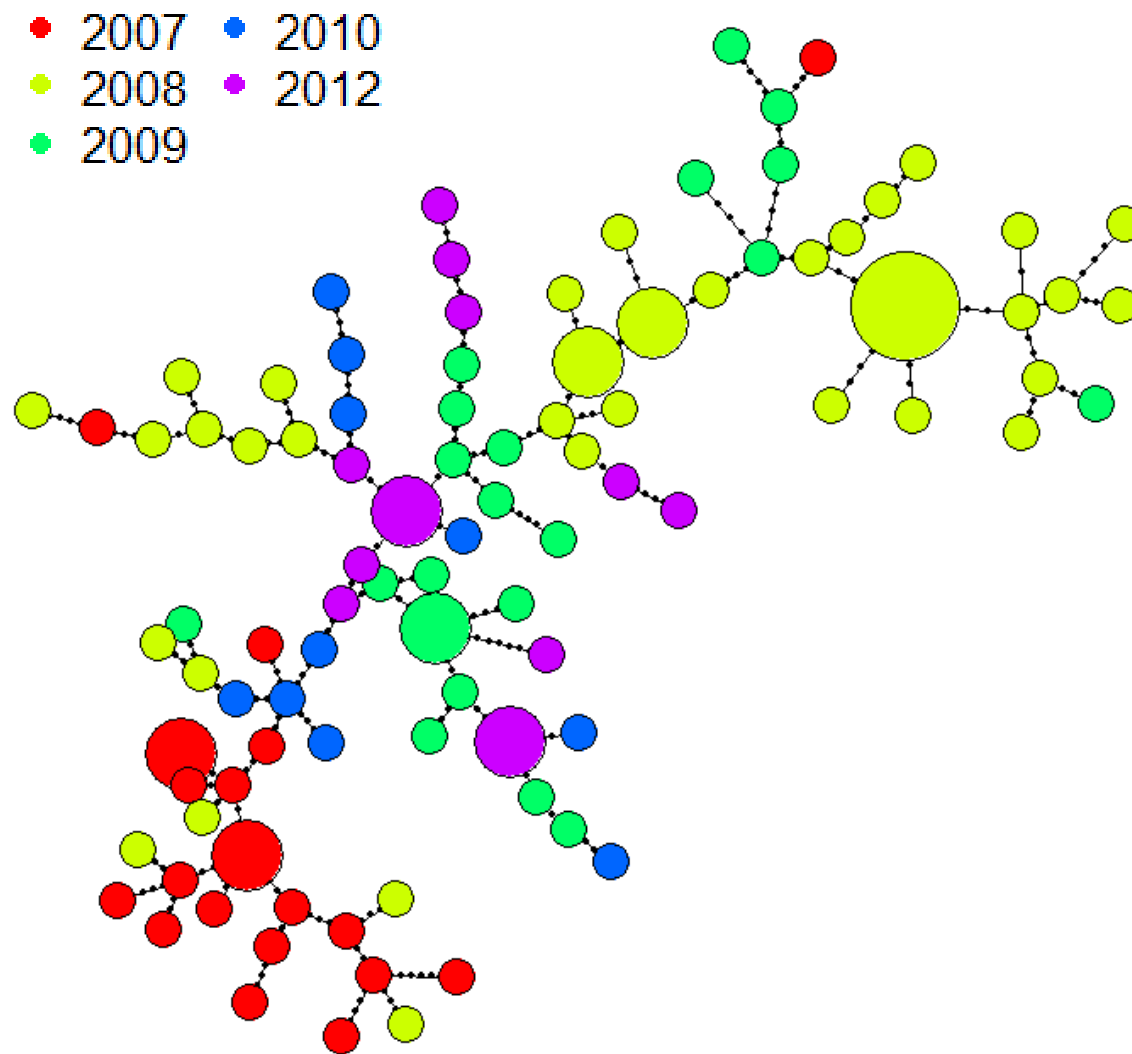


Table S1. *In vitro* IC₅₀s (nM) of culture-adapted field isolates from the China-Myanmar border to 10 antimalarial drugs during 2007-2012

Drugs	2007 (N=21)		2008 (N=41)		2009 (N=22)		2010 (N=10)		2012 (N=13)	
	Median (IQR)	Range	Median (IQR)	Range	Median (IQR)	Range	Median (IQR)	Range	Median (IQR)	Range
CQ	145.0(96.8-310.3)	51.6-415.6	266.5 (105.3-752.3)	38.7-2536	296.9(231.2-394.6)	165-1045	382.4 (269.0-567.1)	234.9-659.9	692.3 (422.0-1281.0)	136.5-1559
PQ	5.3 (2.8-10.9)	1.8-19.6	10.2 (7.7-14.04)	1.7-34.3	11.14 (6.6-16.0)	3.3-42.9	14.2 (12.1-18.2)	6.4-29.8	14.3 (11.6-21.1)	5.1-35.2
MQ	54.0 (42.5-62.4)	35.6-86.4	41.42 (29.7-54.7)	11.1-107.2	45.9 (33.9-53.7)	24.9-96.2	44.1 (26.4-54.2)	5.6-121.1	43.2 (35.7-62.3)	20.4-73.6
NQ	12.4 (4.7-17.1)	2.8-32	11.2 (7.31-13.54)	1.6-30.8	10.05 (6.7-16.7)	1.7-29.6	11.5 (5.8-16.6)	5.3-24.5	8.2 (4.1-13.8)	2.2-20.2
QN	440.3 (317.3-634.7)	204.2-875.6	421.6 (246.7-611.2)	47.4-1374	506.4 (352.0-712.4)	149-2123	435 (120.0-611.2)	30.6-1095	500.9 (299.9-553.5)	141-607.8
PY	2690 (1055.0-4312.0)	8.4-5613	3035 (1972.0-5219.0)	222.7-10519	5159 (4200-5997)	3144-7038	5238 (4316.0-5996.0)	3569-6622	4834 (3676.0-6336.0)	2283-8102
PND	8.2 (5.0-17.6)	3.6-28.1	14.7 (6.9-18.0)	2.6-39.3	9.8 (4.2-17.8)	2.2-28.1	8.5 (8.1-11.9)	7.8-16.4	10.4 (9.1-14.9)	4.3-30.2
LMF	5.7 (4.2-6.8)	3-11.5	4.7 (3.4-6.7)	2.3-16.9	5.150 (4.3-7.2)	3.4-8.7	4.7 (3.2-6.1)	2.7-9.7	5.2 (2.4-6.9)	1.7-8.6
AS	11.2 (10.5-13.1)	6.2-20.2	9.8 (7.5-12.7)	1.6-27.7	10.65 (8.1-14.9)	4.8-18.7	13.1 (8.8-18.9)	5.8-19.2	11.4 (8.3-20.3)	5.7-29.7
DHA	3.8 (2.7-5.3)	1.6-11.0	3.5 (2.3-5.5)	1.1-10.2	4.800(3.6-6.8)	1.3-8.8	5.4 (3.3-6.1)	1.7-8.2	4.6 (3.4-6.8)	1.4-7.5

IQR – interquartile range.

Table S2. *In vitro* IC₅₀ values of *P. falciparum* isolates with different susceptibilities to chloroquine to 10 antimalarial drugs

Drug	Isolates with moderate CQ resistance (n=15)		Isolates with high CQ resistance (n=92)		P*
	Median IC ₅₀ (nM)	Interquartile range	Median IC ₅₀ (nM)	Interquartile range	
Chloroquine	66.6	50.1-88.0	315.9	226.7-604.1	
Piperaquine	5.5	2.5-9.7	11.9	7.4-15.4	<0.0001
Naphthoquine	12.4	11.2-15.4	10.6	6.4-16.8	0.1464
Mefloquine	48.0	35.3-74.3	44.6	34.5-56.5	0.5628
Lumefantrine	4.7	3.7-5.5	5.2	3.6-6.8	0.6741
Quinine	629.6	201.3-821.6	445.0	299.7-572.6	0.2786
Pyrimethamine	3584.0	1519-5614	4153	2706-5576	0.9885
Pyronaridine	9.3	6.3-16.5	10.4	6.6-17.3	0.6876
Artesunate	9.7	7.1-13.1	11.0	8.2-14.3	0.2659
Dihydroartemisinin	2.6	1.9-3.8	4.4	3.3-6.2	0.0050

*Mann-Whitney U test