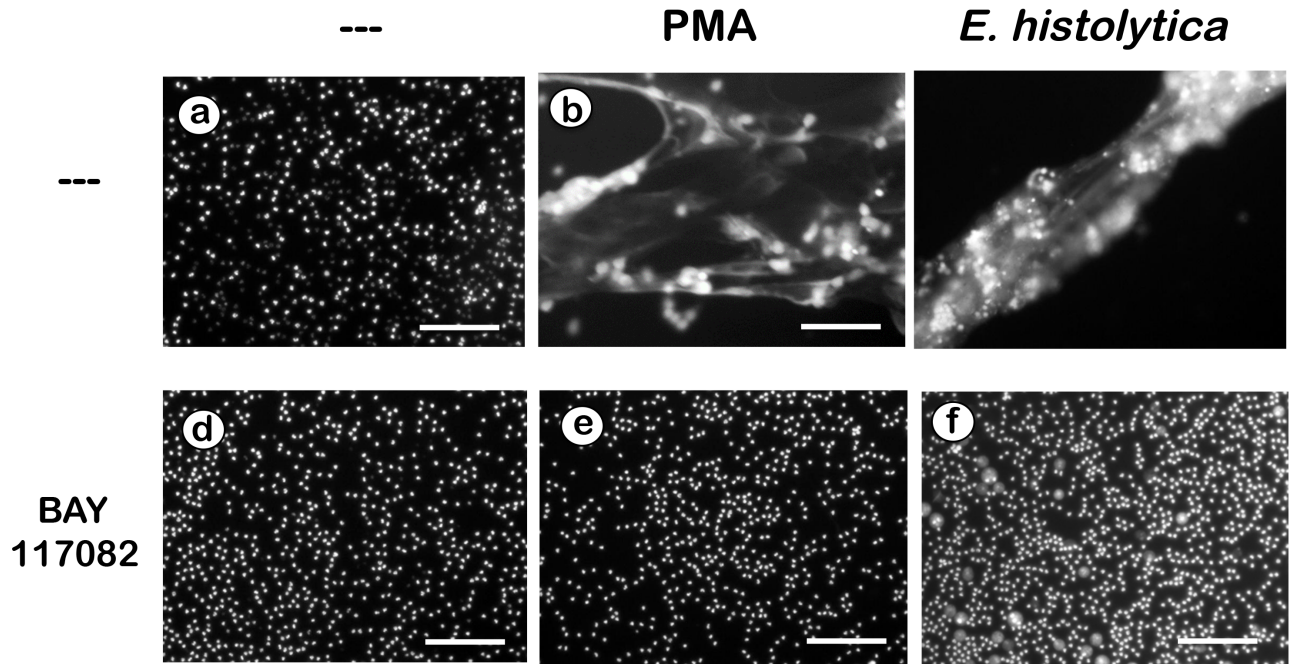


## 1.4 Supplementary Figures



**Supplementary Figure 4.** *Entamoeba histolytica*-induced NET formation is dependent on NF- $\kappa$ B. Human neutrophils were not stimulated (---), or were stimulated with 20 nM phorbol 12-myristate 13-acetate (PMA), or with *E. histolytica* trophozoites. Neutrophils were previously treated with solvent alone (---; panels a, b, c) or with the NF- $\kappa$ B inhibitor BAY 117082 at 5  $\mu$ M (panels d, e, f). After 4 h, cells were fixed and stained for DNA (DAPI). Microphotographs were taken at 200 X magnification and are representative of three experiments. Bar is 100  $\mu$ m.