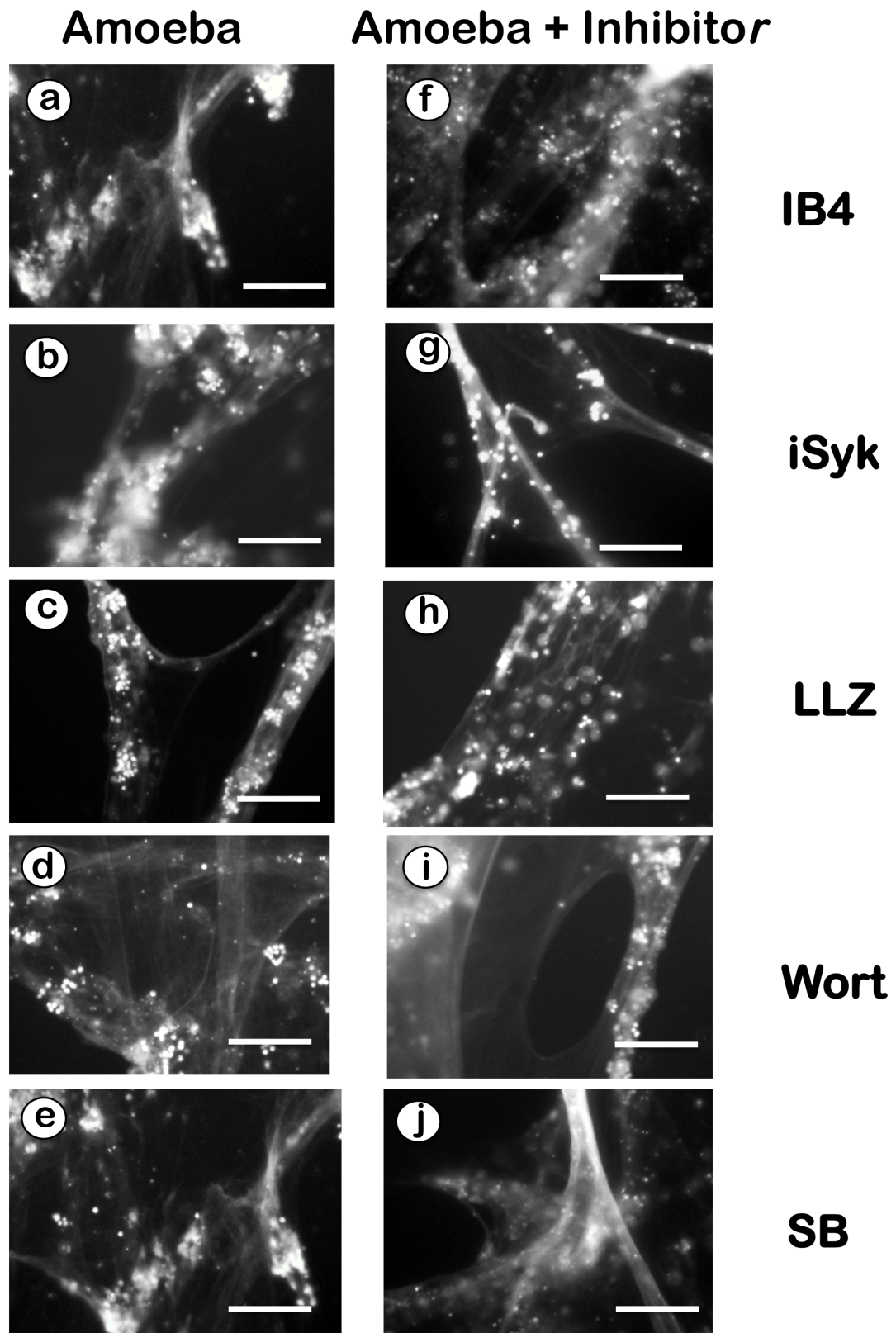


1.5 Supplementary Figures



Supplementary Figure 5. *Entamoeba histolytica*-induced NET formation is independent on Syk, TAK1, β 2 integrins, PI3K, and p38 MAPK. Human neutrophils were stimulated with *E. histolytica* trophozoites alone (Amoeba) or in the presence of the inhibitors (Amoeba + Inhibitor): 10 μ g/ml of the blocking monoclonal antibody anti- β 2 integrins (IB4), 1 μ M iSyk, a Syk inhibitor, 10 nM LLZ 1640-2 (LLZ), a TAK1 inhibitor, 50 nM Wortmannin (Wort), a PI3K inhibitor, or 200 nM SB203580 (SB), a p38 MAPK inhibitor. After 4 h, cells were fixed and stained for DNA (DAPI). Microphotographs were taken at 200 X magnification and are representative of three experiments. Bar is 100 μ m.