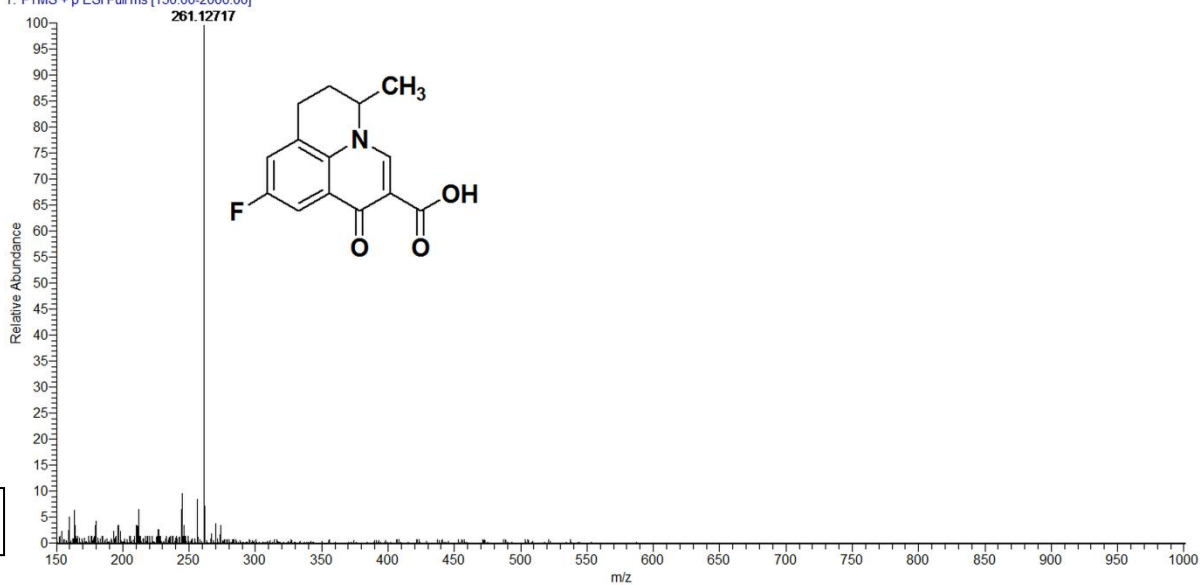
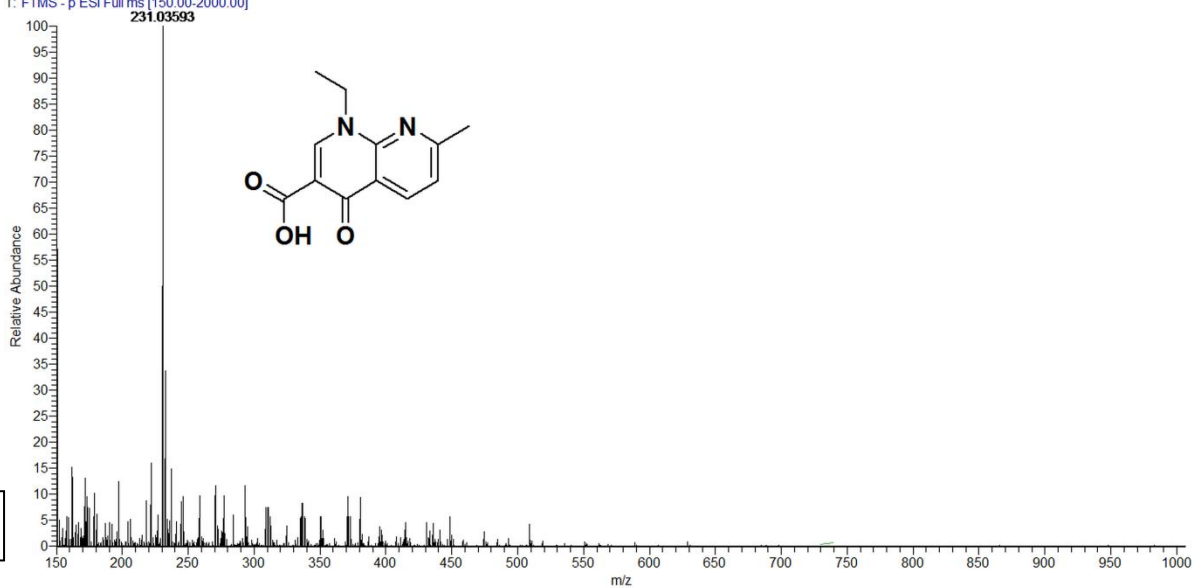


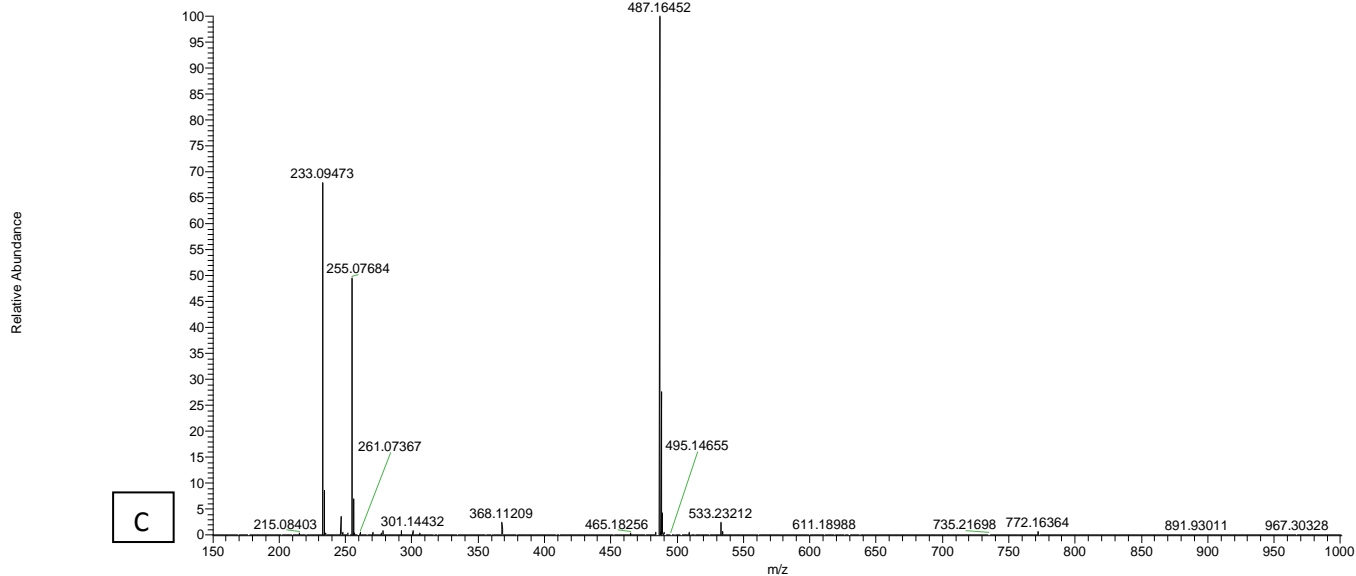
T: FTMS + p ESI Full ms [150.00-2000.00]



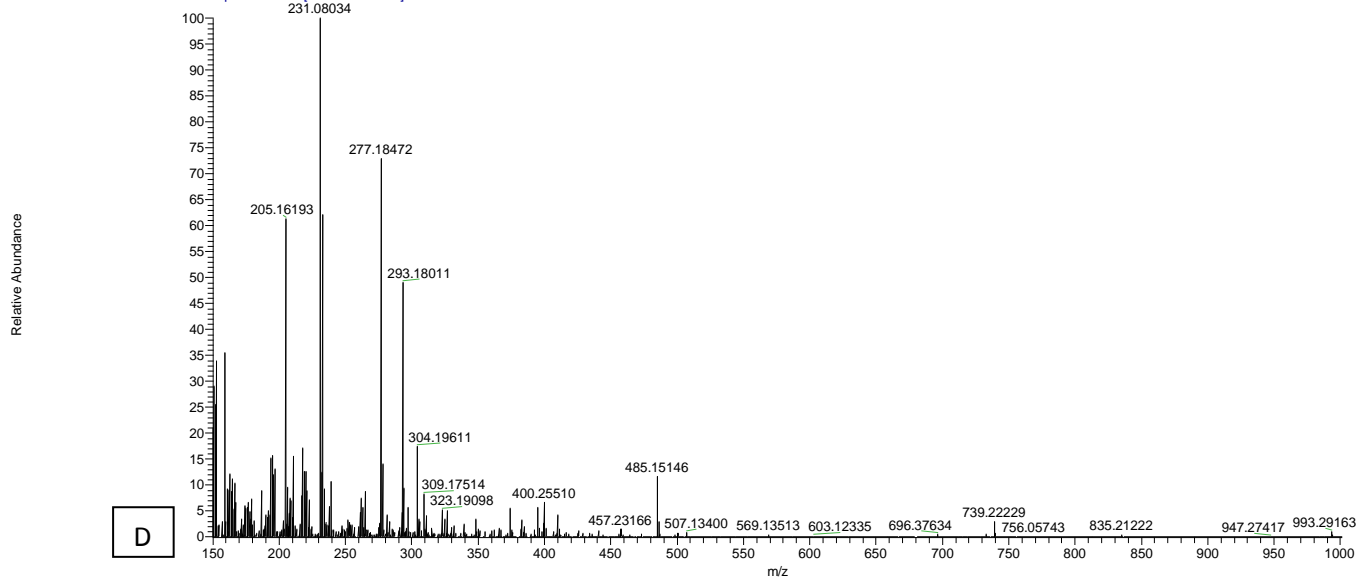
T: FTMS - p ESI Full ms [150.00-2000.00]



P77-STD2 #181 RT: 1.74 AV: 1 NL: 2.67E9
T: FTMS + p ESI Full ms [150.00-2000.00]



P77-STD2 #182 RT: 1.75 AV: 1 NL: 7.20E7
T: FTMS - p ESI Full ms [150.00-2000.00]



Additional file 6: Figure S4 Mass spectra of (A) nalidixic acid (B) flumequine present in PWS52 extract, (C) standard nalidixic acid (m/z : 233.09) in positive mode and (D) standard nalidixic acid (m/z: 231.08) in negative mode.