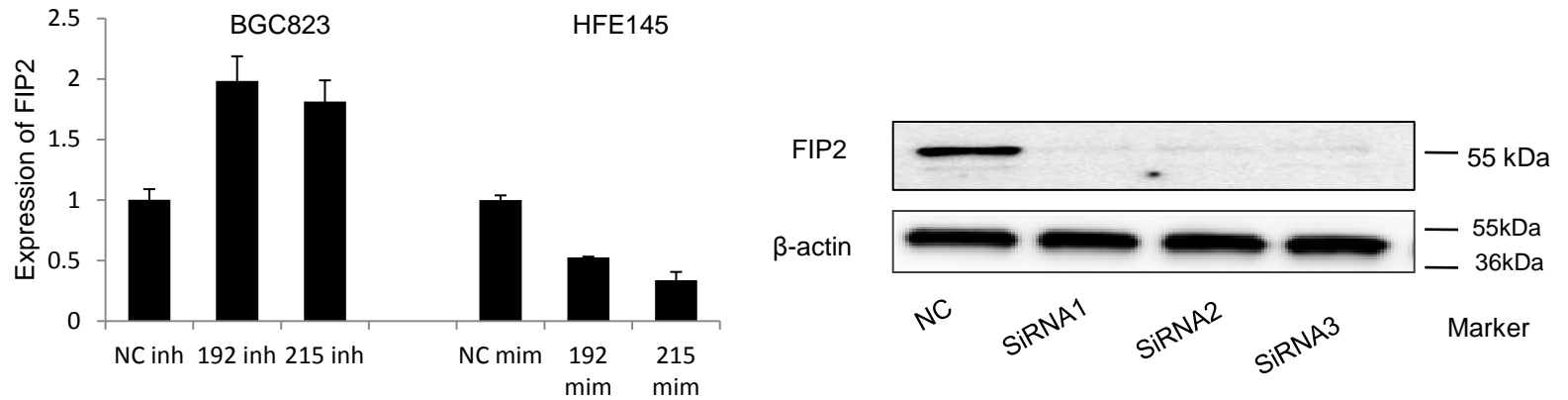
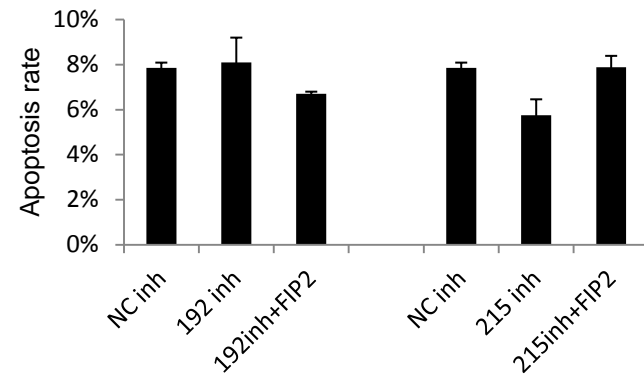
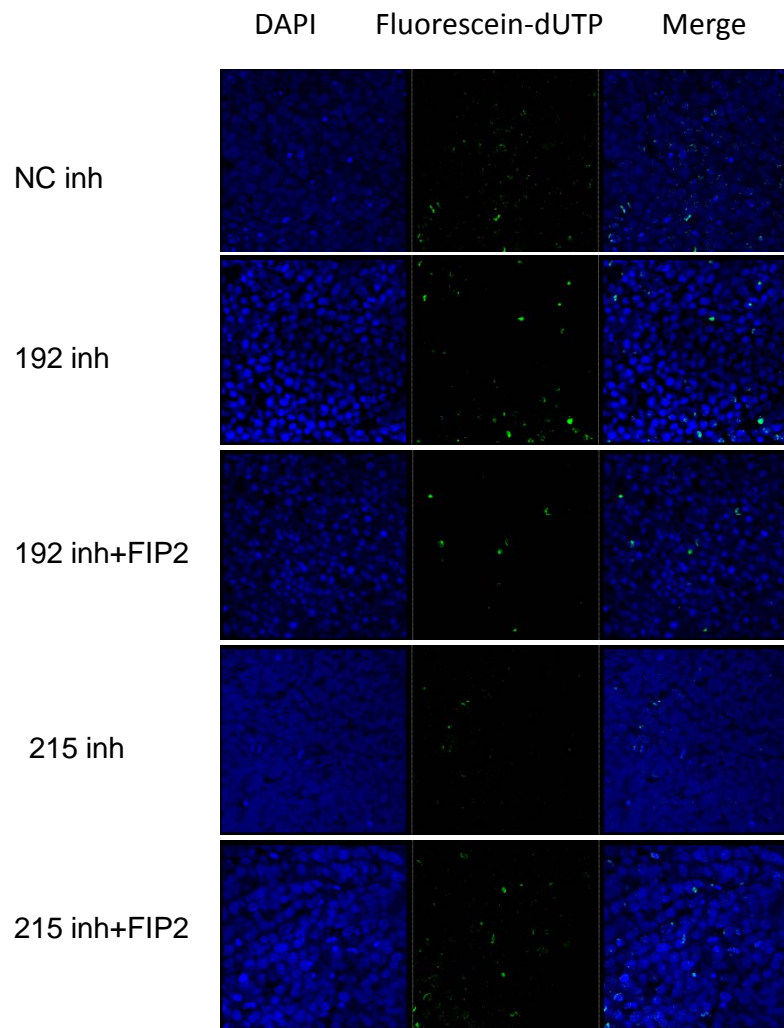


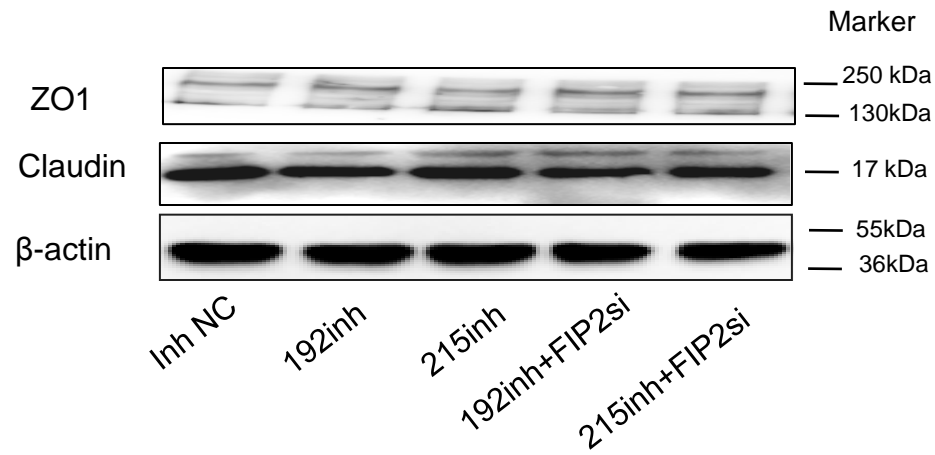
**Supplementary Figure 1. Expression of miR -192 /215 in gastric cell lines**



**Supplementary Figure 2. Expression of Rab11-FIP2 as a function of miR-192/215 regulation.** Left panel, Effects of miR-192/215 inhibitors and mimics on FIP2 expression (RT-PCR results). Right panel, Effect of Rab11-FIP2 siRNAs on FIP2 protein expression (Western blot results). NC: negative control; 192: miR-192; 215: miR-215; inh: inhibitor; mim: mimic.



**Supplementary Figure 3. Effects of miR-192/215 inhibitors and FIP2 siRNA on apoptosis (TUNEL results).**  
 NC: negative control; 192: miR-192; 215: miR-215; inh: inhibitor; mim: mimic; FIP2: Rab11-FIP2 siRNA.



**Supplementary Figure 4. Effects of miR and FIP2 inhibition on EMT protein levels.**

EMT proteins ZO1 and claudin were measured by Western blotting. *NC*: negative control; *192*: miRNA-192; *215*: miRNA-215; *FIP2si*: Rab11-FIP2 siRNA; *mim*: mimic; *inh*: inhibitor