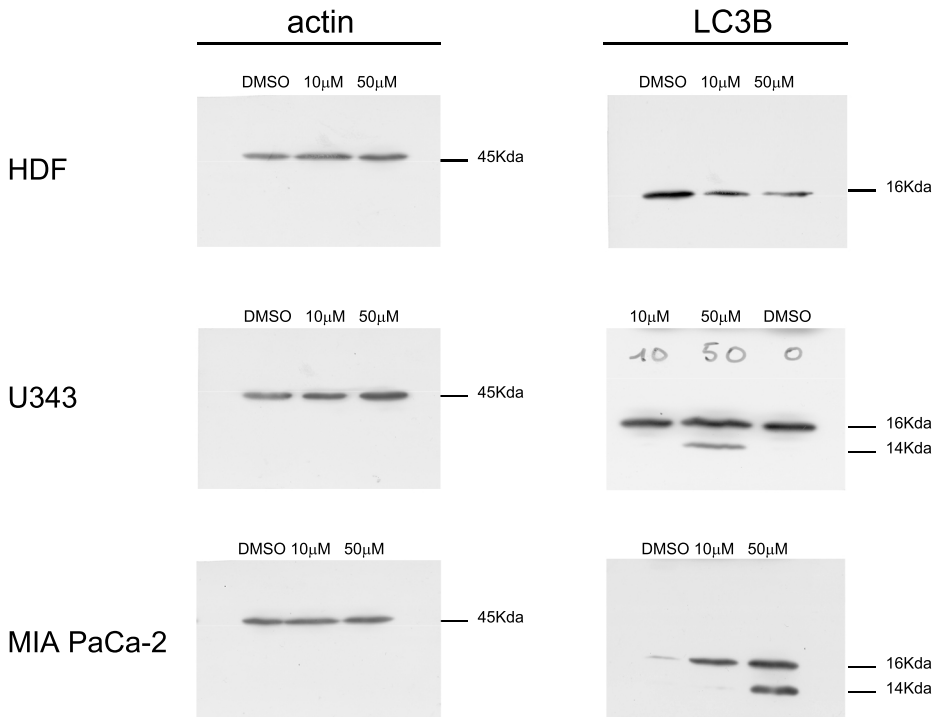


# Cell-specific pattern of berberine pleiotropic effects on different human cell lines

Alessandro Agnarelli, Marco Natali, Mercedes Garcia-Gil, Rossana Pesi,  
Maria Grazia Tozzi, Chiara Ippolito, Nunzia Bernardini, Robert Vignali, Renata Batistoni,  
Anna Maria Bianucci, Silvia Marracci



**Western Blotting experiments.** Cells are treated with DMSO or berberine for 48 hours and subjected to electrophoresis. Two gels were loaded with the same amount of proteins and run simultaneously. Western Blotting was performed, as described in Methods, with actin or LC3B antibody. For the construction of Fig.6, in U343 (LC3B), lane 0 berberine was cropped on the right of the figure and pasted on the left in order to obtain the same sequence of the other figures (0, 10, 50 μM berberine).