

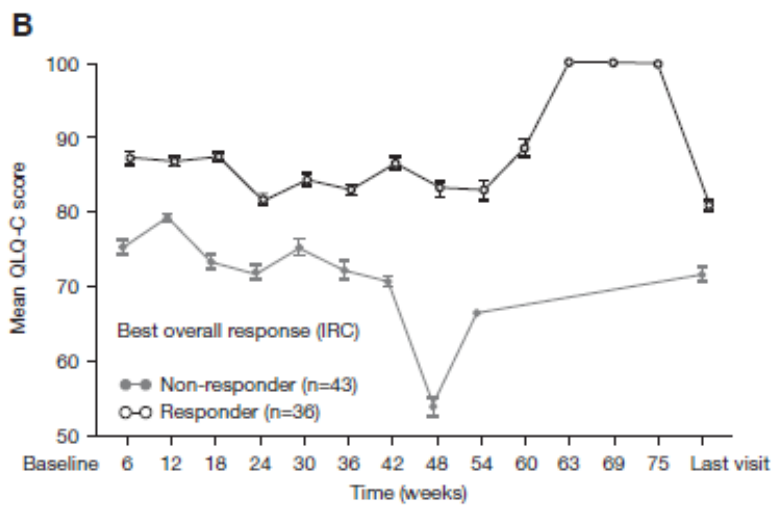
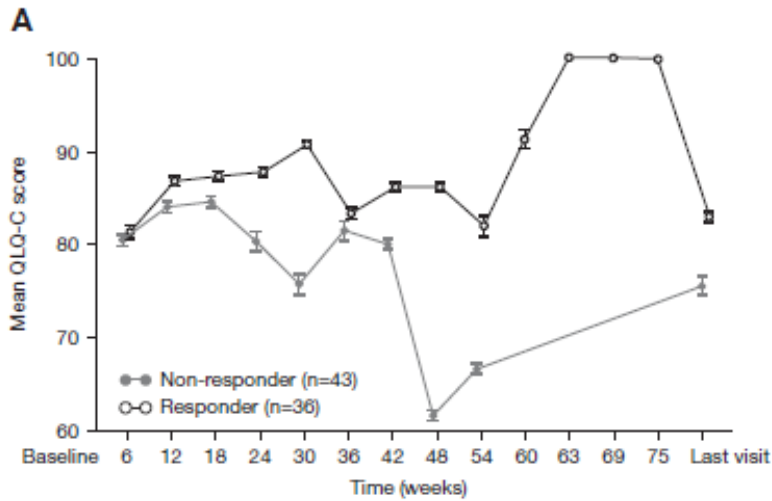
Supplementary materials

Patient-reported outcomes in a phase II, North American study of alectinib in patients with ALK-positive, crizotinib-resistant, non-small-cell lung cancer

Sai-Hong Ignatius Ou, Mark A. Socinski, Shirish Gadgeel, Leena Gandhi, Howard West, Alberto Chiappori, Victor Cohen, Gregory J. Riely, Vlatka Smoljanovic, Walter Bordogna, Elaine Wright, Kendra DeBusk, Ali Zeaiter, Alice T. Shaw

Supplementary figure 1. Correlation of best overall response with HRQoL in terms of: (A) emotional functioning and (B) cognitive functioning.

HRQoL, health-related quality of life; QLQ-C, Quality of Life Questionnaire-Core.



Supplementary table 1 Mean and median baseline values for the QLQ-C30 and QLQ-LC13 according to ECOG PS score

	ECOG PS 0	ECOG PS 0	ECOG PS 1	ECOG PS 1	ECOG PS 2	ECOG PS 2
	(n=30)	(n=30)	(n=48)	(n=48)	(n=9)	(n=9)
	mean ± SD	median	mean ± SD	median	mean ± SD	median
Global Health Status (QLQ-C30)	65.74 ± 20.46	75.00	48.67 ± 24.24	50.00	39.58 ± 21.25	37.50
Functioning (QLQ-C30)						
Physical	86.91 ± 15.96	93.33	65.00 ± 21.81	63.33	40.00 ± 22.25	40.00
Social	75.31 ± 26.70	66.67	57.58 ± 37.26	66.67	27.08 ± 23.46	25.00
Role	77.16 ± 31.06	100	53.41 ± 31.66	66.67	27.08 ± 23.46	33.33
Cognitive	91.36 ± 12.55	100	71.21 ± 25.76	66.67	68.75 ± 27.37	66.67
Emotional	82.10 ± 16.29	83.33	69.26 ± 23.01	70.83	67.71 ± 20.62	70.83
Symptoms (QLQ-C30)						
Fatigue	30.45 ± 21.48	33.33	51.01 ± 26.61	44.44	66.67 ± 22.22	61.11
Nausea and vomiting	11.11 ± 17.30	0.00	16.67 ± 21.26	8.33	25.00 ± 26.73	16.67
Pain	19.75 ± 23.59	16.67	44.70 ± 34.25	33.33	45.83 ± 41.55	41.67
Dyspnoea	22.22 ± 26.15	33.33	40.31 ± 32.17	33.33	33.33 ± 30.86	33.33
Insomnia	24.69 ± 27.10	33.33	37.88 ± 33.40	33.33	16.67 ± 17.82	16.67

Appetite loss	18.52 ± 28.24	0.00	34.09 ± 35.57	33.33	45.83 ± 24.80	33.33
Constipation	12.35 ± 16.40	0.00	19.70 ± 25.23	0.00	50.00 ± 39.84	50.00
Diarrhoea	13.58 ± 24.91	0.00	13.95 ± 23.27	0.00	8.33 ± 15.43	0.00
<hr/>						
Symptoms (QLQ-LC13)						
<hr/>						
Dyspnoea	19.75 ± 22.51	11.11	39.68 ± 27.01	33.33	20.63 ± 28.28	33.33
Cough	27.16 ± 24.52	33.33	39.39 ± 29.00	33.33	25.00 ± 23.57	33.33
Haemoptysis	1.23 ± 6.42	0.00	1.52 ± 7.02	0.00	0.00 ± 0.00	0.00
Sore mouth	0.00 ± 0.00	0.00	7.58 ± 20.16	0.00	8.33 ± 15.43	0.00
Dysphagia	0.00 ± 0.00	0.00	6.06 ± 13.01	0.00	12.50 ± 17.25	0.00
Peripheral neuropathy	7.41 ± 19.25	0.00	16.67 ± 23.29	0.00	12.50 ± 24.80	0.00
Alopecia	8.64 ± 17.52	0.00	13.18 ± 28.30	0.00	14.29 ± 37.80	0.00
Pain in the chest	17.28 ± 21.42	0.00	25.00 ± 33.04	0.00	16.67 ± 17.82	16.67
Pain in the arm or shoulder	9.88 ± 20.29	0.00	21.97 ± 30.45	0.00	12.50 ± 35.36	0.00
Pain in other parts	32.05 ± 29.03	33.33	49.59 ± 38.09	33.33	54.17 ± 43.42	50.00

ECOG PS, Eastern Cooperative Oncology Group Performance Status; QLQ-C30, Quality of Life Questionnaire-Core 30-item;

QLQ-LC13, Quality of Life Questionnaire-lung cancer-specific module.

Values in **bold** represent a higher baseline score associated with a higher ECOG PS.