

S1 Supporting Information

S1 Figure

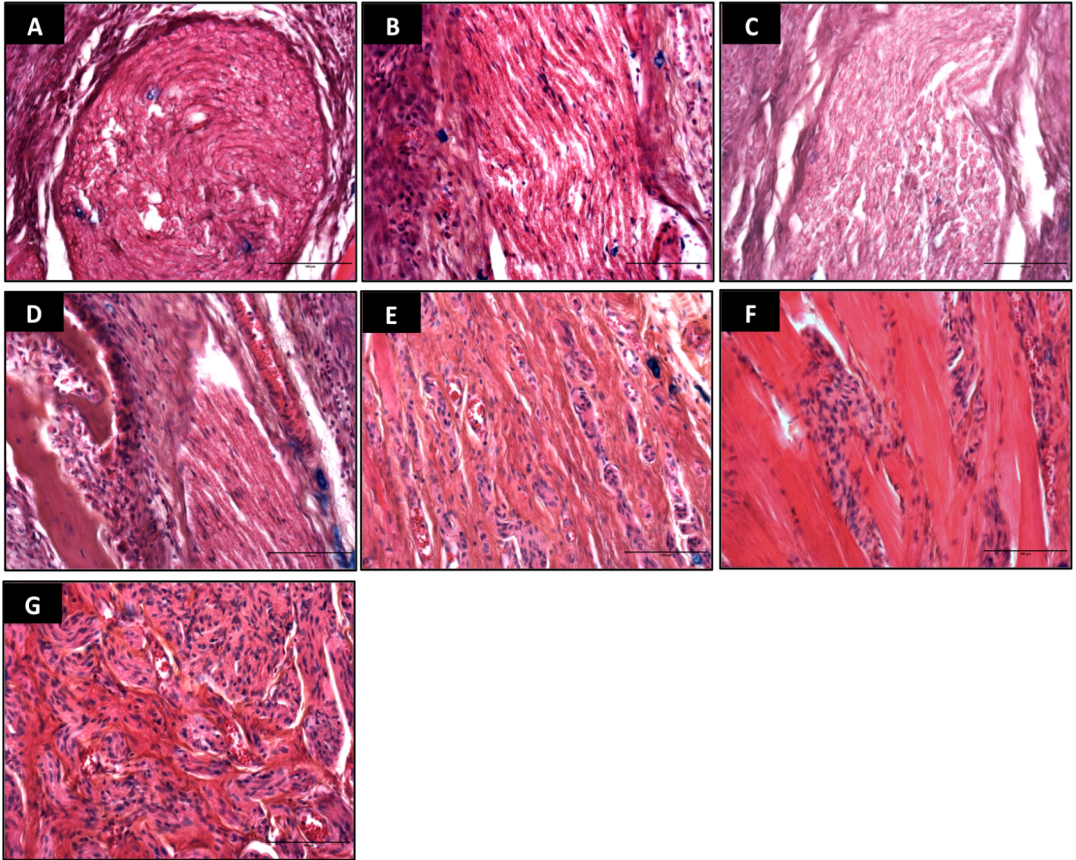


Fig S1 – Representative images showing features of general morphology of ulnar, median and radial nerves branches stained with AB&OG. (A, B, C and D) Longitudinal and transversal cut of nerve branches demonstrating normal features (N0), degenerating axons (N1) and/or axonal sprouts (N2). Nerves with advanced pathological features: (E) unorganized axons bundled in connective tissue (N3), (F) unorganized axon ramifications in muscle (N4) and (G) neuroma - highly unorganized axons in tissue (N5). All images have 20x magnification with scale bar = 100 μ m.