

## Supplemental Information

### **O<sub>2</sub>-inducible H<sub>2</sub>O<sub>2</sub>-forming NADPH oxidase is responsible for the hyper O<sub>2</sub> sensitivity of *Bifidobacterium longum* subsp. *infantis***

Kunifusa Tanaka<sup>2</sup>, Takumi Satoh<sup>1</sup>, Jun Kitahara<sup>2</sup>, Saori Uno<sup>2</sup>, Izumi Nomura<sup>4</sup>, Yasunobu Kano<sup>3</sup>, Tohru Suzuki<sup>4,5</sup>, Youichi Niimura<sup>1,2</sup>, Shinji Kawasaki<sup>1,2\*</sup>

<sup>1</sup>Department of Molecular Microbiology, Tokyo University of Agriculture, 1-1-1 Sakuragaoka, Setagaya-ku, Tokyo 156-8502, Japan

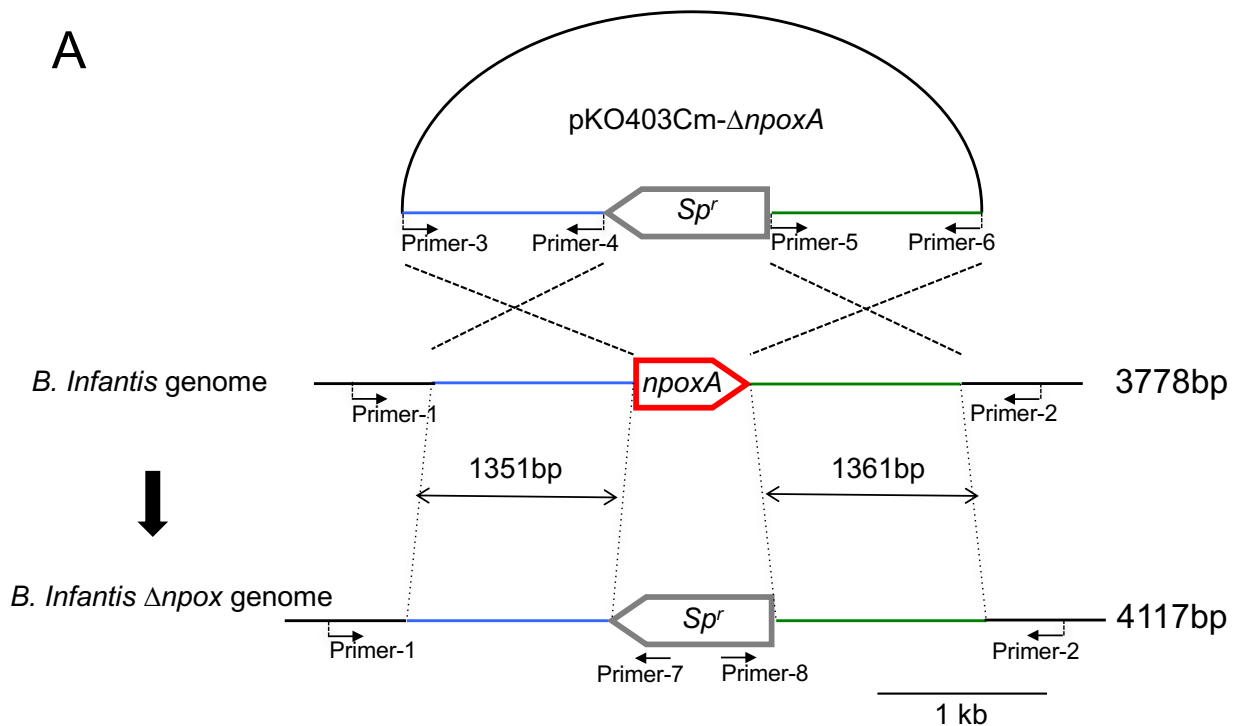
<sup>2</sup>Department of Bioscience, Tokyo University of Agriculture, 1-1-1 Sakuragaoka, Setagaya-ku, Tokyo 156-8502, Japan

<sup>3</sup>Department of Molecular Genetics, Kyoto Pharmaceutical University, 5 Nakauchi-cho, Misasagi, Yamashina-ku, Kyoto 607-8414, Japan.

<sup>4</sup>Faculty of Applied Biological Sciences, Gifu University, 1-1 Yanagido, Gifu, 501-1193 Japan.

<sup>5</sup>United Graduate School of Agricultural Science, Gifu University, 1-1 Yanagido, Gifu, 501-1193 Japan.

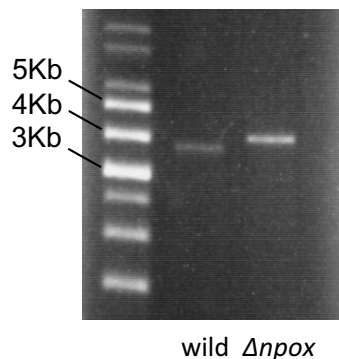
\*Correspondence: Shinji Kawasaki, kawashin@nodai.ac.jp, Tel&Fax+81-3-5477-2764



**B**

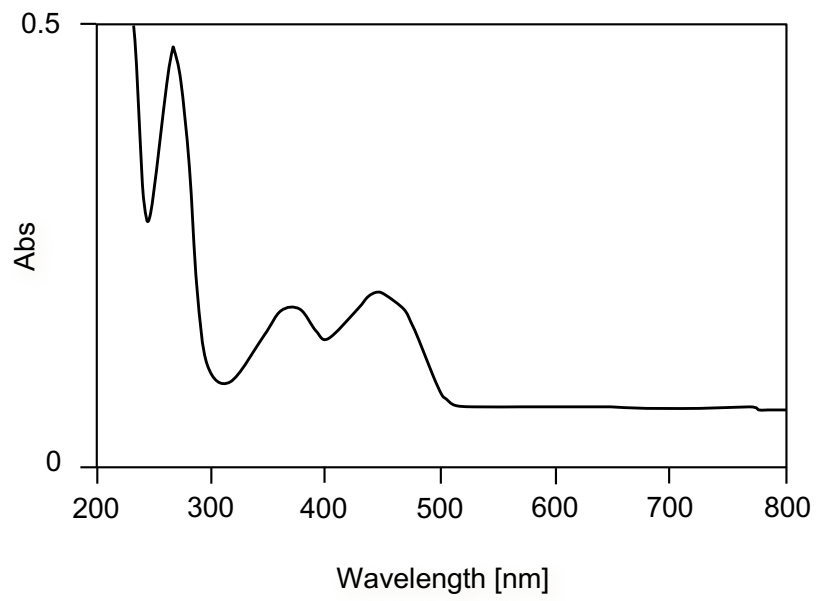
Primer-1	CAG GCC AGC GTA ATC ACA G
Primer-2	GTG CCG GAC AAC GAA GTC AA
Primer-3	acaGTTTCGATGACGTTATCTCCCT
Primer-4	aagGGCTTTATTGTCGCACGG
Primer-5	gaaTGAGACCAGGACCAACGA
Primer-6	ctaGAGCGCATCGATTTGTTTCCA
Primer-7	AGC AGT TCG TAG TTA TCT TGG AG
Primer-8	GTT ATT TAT AGA TTT CAT TGG CTT

**C**



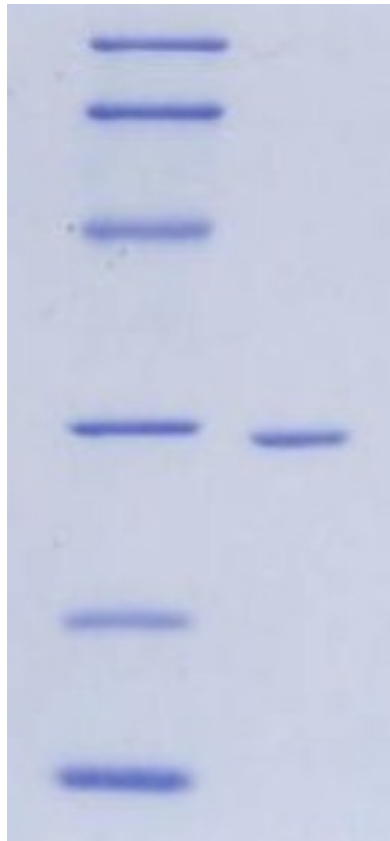
Supplementary Figure S1

Procedure for *B. infantis* *npox* gene disruption. (A) A plasmid pKO403Cm- $\Delta npoxA$  for the knockout of the *B. infantis* *npox* gene was constructed. (B) Primers used for the gene knockout experiments. Small letters are the 5' overhang for the Golden Gate cloning experiment. (C) The deletion of *npoxA* was confirmed by PCR using Primer-1 and Primer-2. The PCR products were sequenced to confirm the precise disruption.



Supplementary Figure S2

Absorption spectrum of the *B. infantis* NPOX protein. The absorption (Abs) spectrum of the purified enzyme was determined in 50 mM sodium phosphate, pH 7.0.



Supplementary Figure S3  
Original SDS-PAGE image of the purified *B. infantis* NPOX used to generate Figure 2B.