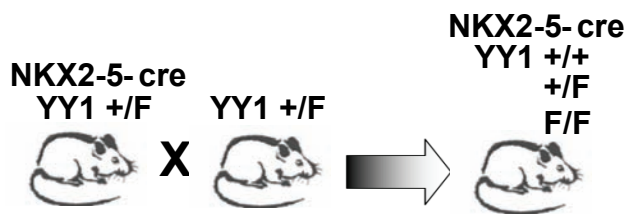
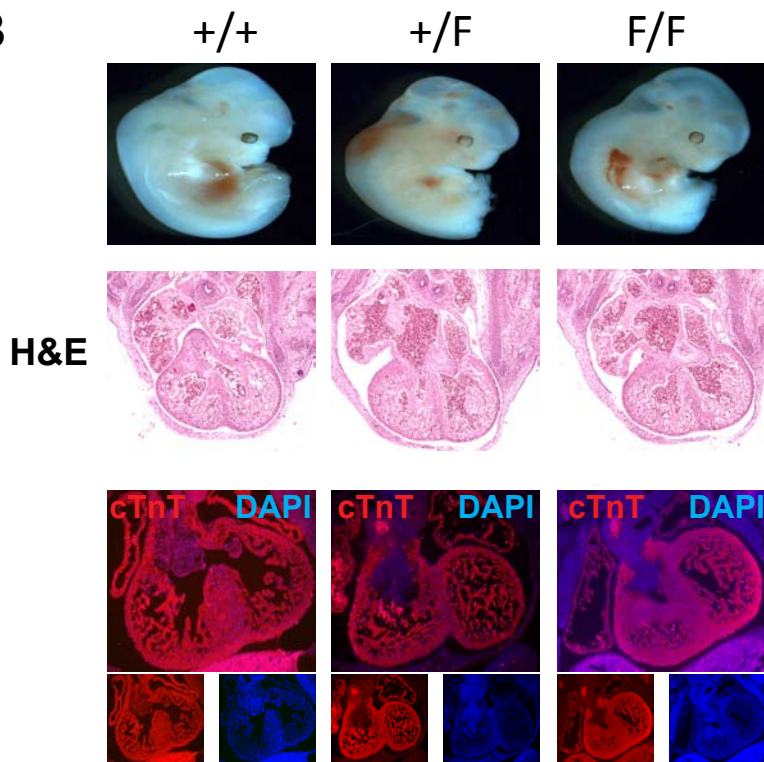
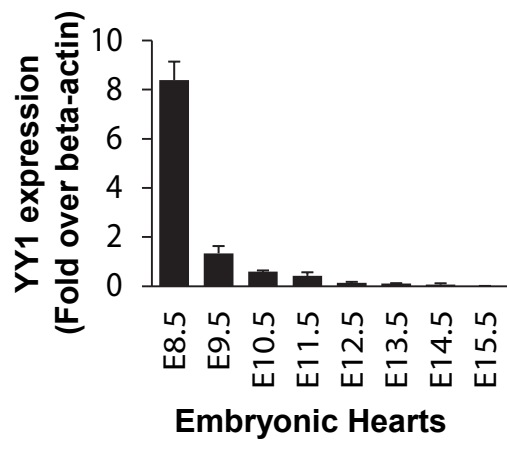


A



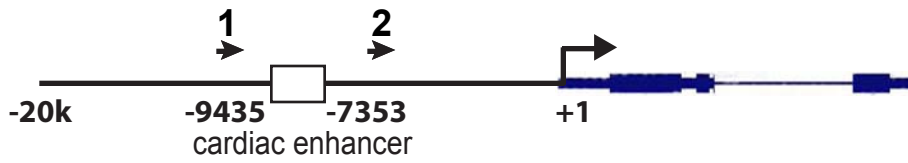
B



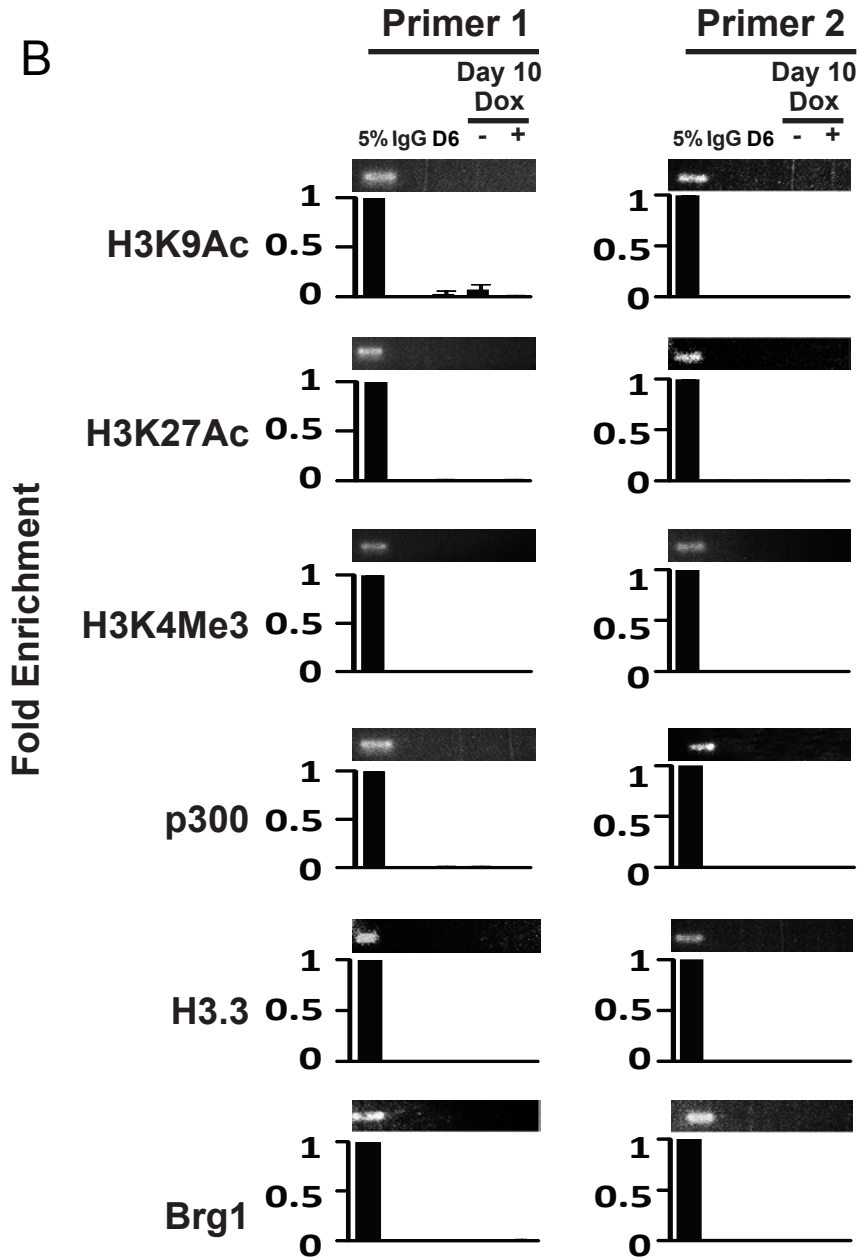


A

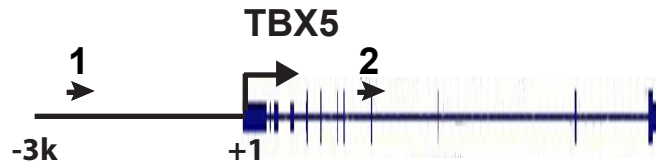
NKX2-5 enhancer/promoter



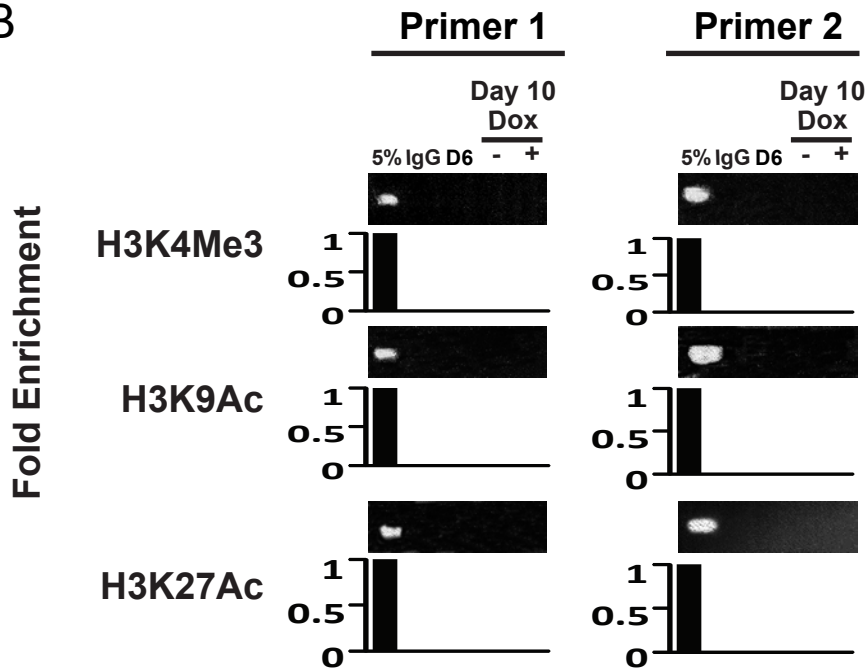
B



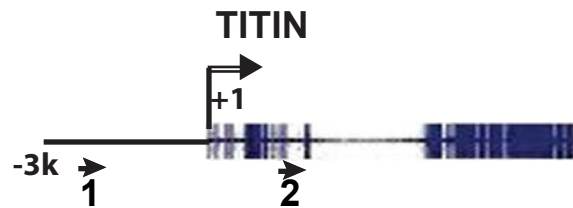
A



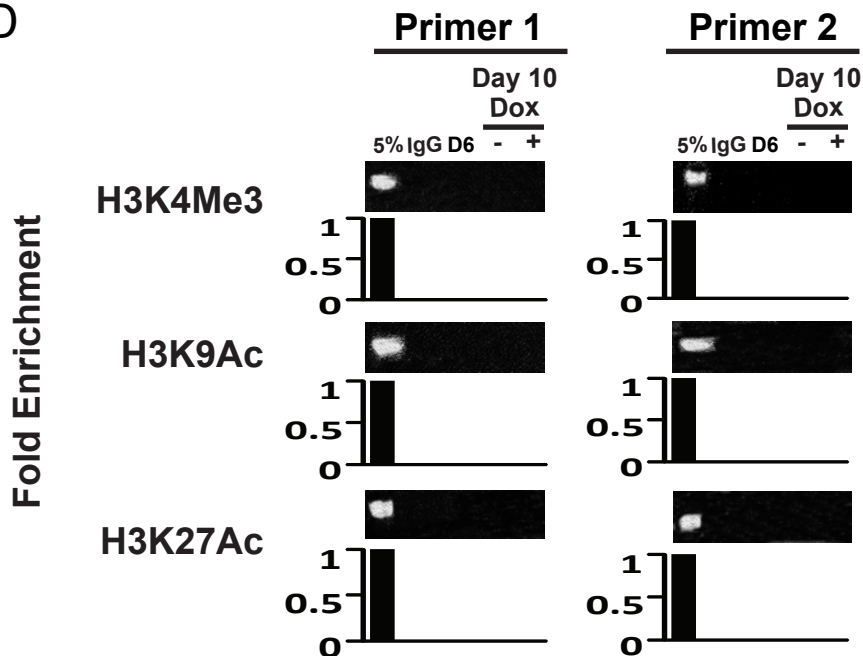
B



C



D



Supplement Table I. Results from the interbreeding of Nkx2-5-Cre;YY1 Flox/+ male with YY1 Flox/+ females.

e10.5	YY1 genotype			
	NKX2-5-cre	+/+	+/F	F/F
+		11/7 (18.6/12.5)	10/15 (17/25)	4/7 (6.8/12.5)
-		12/7 (20.3/12.5)	15/15 (25/25)	4/7 (6.8/12.5)

e11.5	YY1 genotype			
	NKX2-5-cre	+/+	+/F	F/F
+		6/4 (17.6/12.5)	8/9 (23.5/25)	5/4 (14.7/12.5)
-		4/4 (11.8/12.5)	7/9 (20.6/25)	4/4 (12.5/12.5)

e12.5	YY1 genotype			
	NKX2-5-cre	+/+	+/F	F/F
+		4/3 (14.7/12.5)	5/7 (18.5/25)	6/3 (22.5/12.5)
-		5/3 (8.5/12.5)	4/7 (14.8/25)	3/3 (12.5/12.5)

The data shown represents actual/expected number of embryos at embryonic days 10.5 (e10.5), 11.5 (e11.5), and 12.5 (e12.5) for each genotype. The actual/expected percentages of each genotype are displayed in parentheses next to the corresponding embryo number. + = wild type allele. F =Floxed allele.