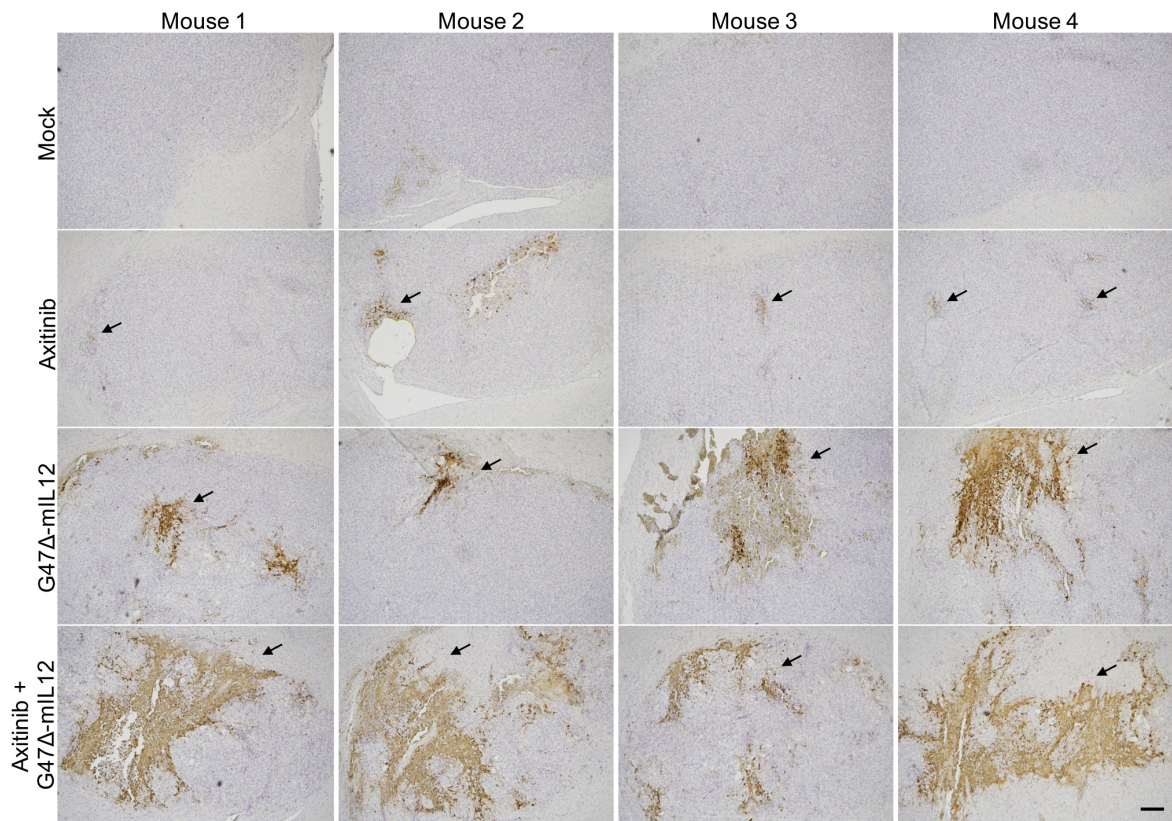
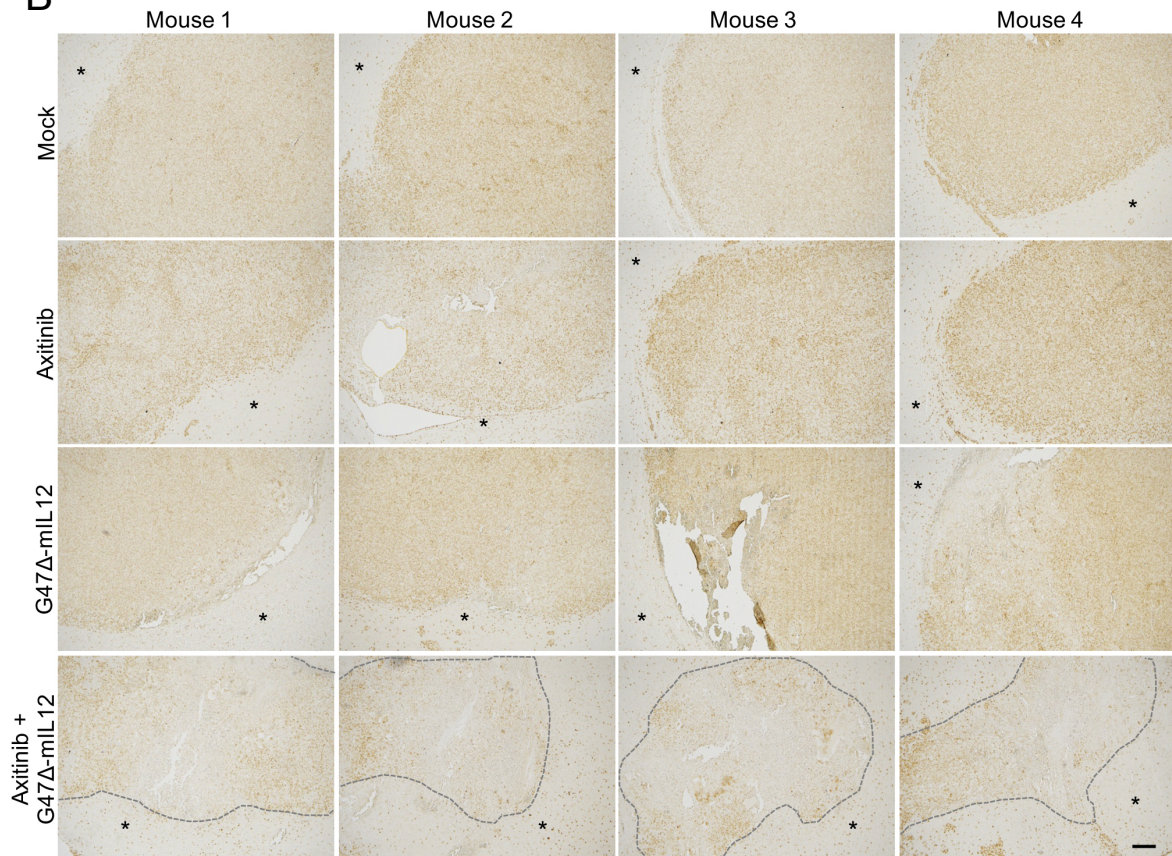


A**B**

Supplementary Figure 4. Immunohistochemical staining for cleaved caspase 3 and Sox2 in treated human MGG123 GBM. Same mice from experiment in Fig. 3. **A.** Cleaved caspase 3 staining (apoptosis) of brain tumor sections bearing MGG123 GBM tumors. Representative images are shown (4x objective). Brown (in arrow) indicates positivity. Bar = 200 μm . **B.** Sox2 staining of brain tumor sections bearing MGG123 GBM tumors. Representative images are shown (4x objective). Brown indicates positivity. Loss of Sox2 expression was observed in the tumors of combination group. The tumors in the combination group were indicated by a dotted line. Asterisk (*) indicates non-tumor areas. Bar = 200 μm .