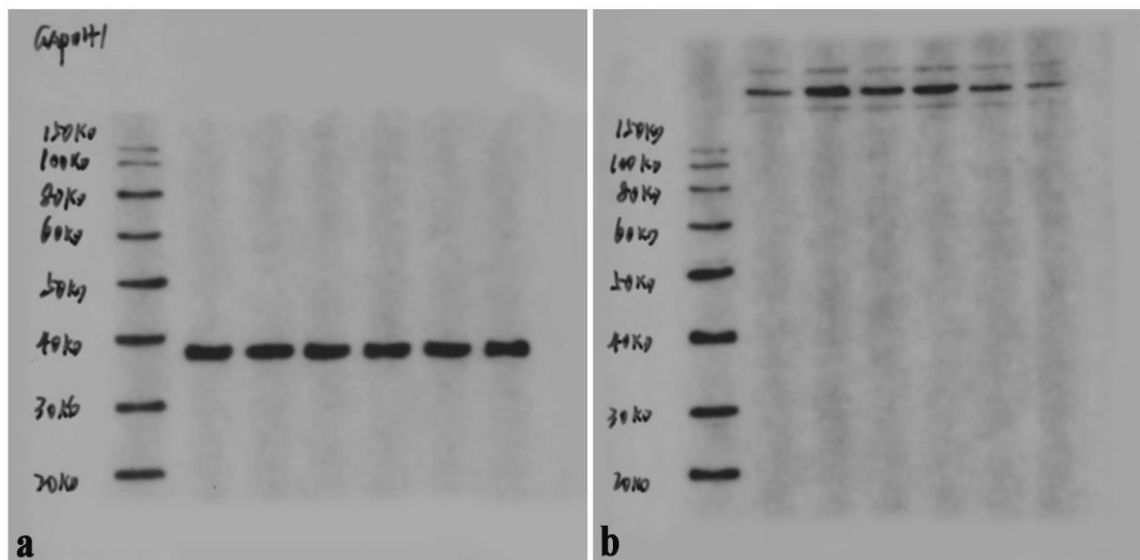


**Figure S1.** The expression of Nav<sub>v</sub>1.7 in the DRG before and after surgery are analyzed by western blotting. a and b show images of full gel of internal reference GAPDH and Nav1.7, respectively.

In Figure S1 a (GAPDH) and b (Nav<sub>v</sub>1.7), lane 1 shows the protein marker, lanes 2-7 show the expression of Nav<sub>v</sub>1.7 before (0 h) and at 2 h, 24 h, 48 h, 72 h, and 120 h following surgery, respectively.



**Figure S2.** The influence of *SCN9A*-RNAi-LV on Nav1.7 proteins in the DRG after plantar incision. a and b show images of full gel of internal reference GAPDH and Nav1.7, respectively.

In Figure S2 a (GAPDH) and b (Nav1.7), lane 1: protein marker, lane 2: control group, lane 3: incision group, lane 4: NC-LV + incision group, lane 5: *SCN9A*-RNAi-LV + incision group.

