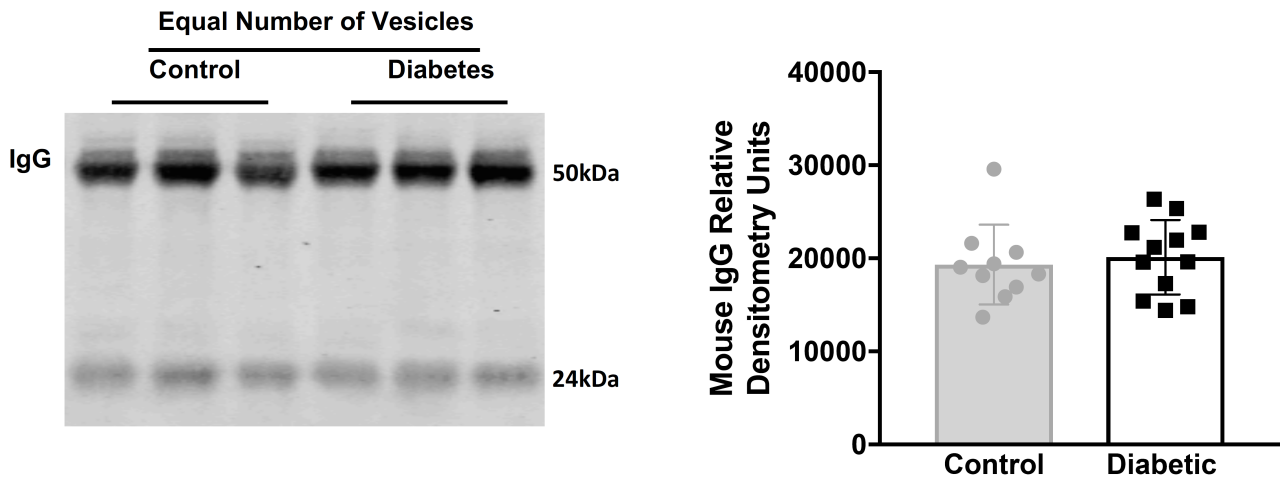
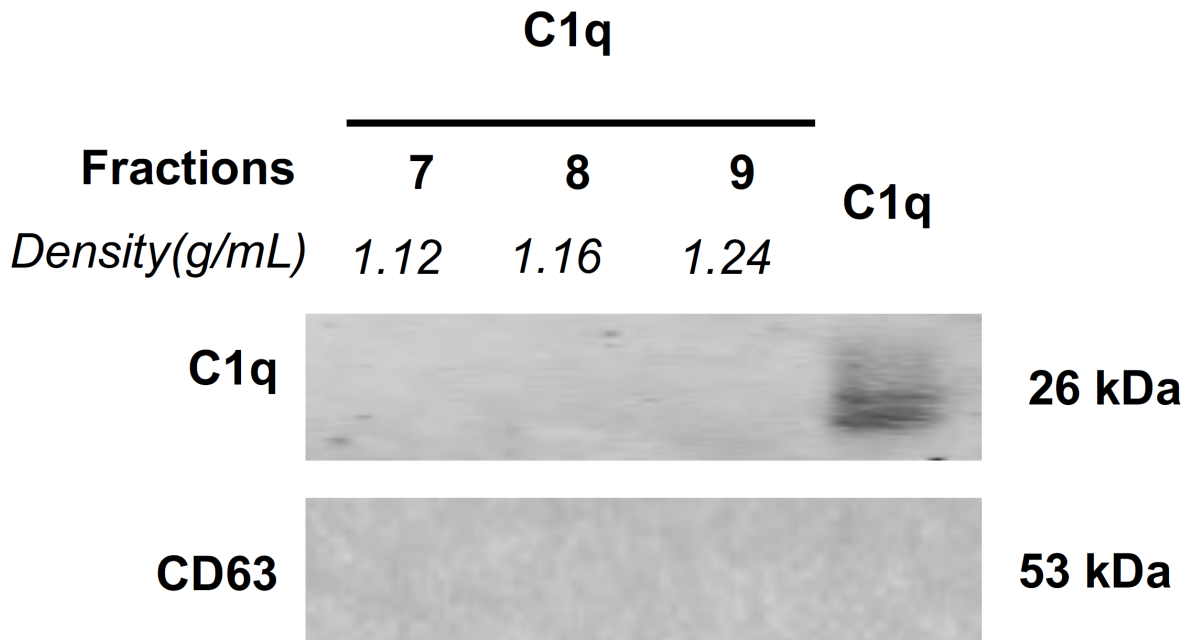


SUPPLEMENTARY DATA

**Supplementary Figure 1. Western blot analysis of mouse plasma exosomes isolated via ExoQucik.** (left) Under equal number of vesicles, no change was observed between control and diabetic mouse plasma exosomes. (right) Quantification based on band intensity. (n=10 for control and n=15 for diabetes, \*p<0.05).



**Supplementary Figure 2. Western Blot analysis of C1q binding assay without presence of exosomes isolated by ultracentrifugation or/and OptiPrep density gradient.** No C1q present in fraction 9.



SUPPLEMENTARY DATA

**Supplementary Figure 3. Western Blot analysis of C1 auto-activation after ultracentrifugation or/and OptiPrep density gradient without presence of exosomes. (left) C1 shows auto-activation with activated C1s and its prevented by INHC. (right) Without exosomes, no auto-activated C1s is presented in fractions 8 to 11.**

