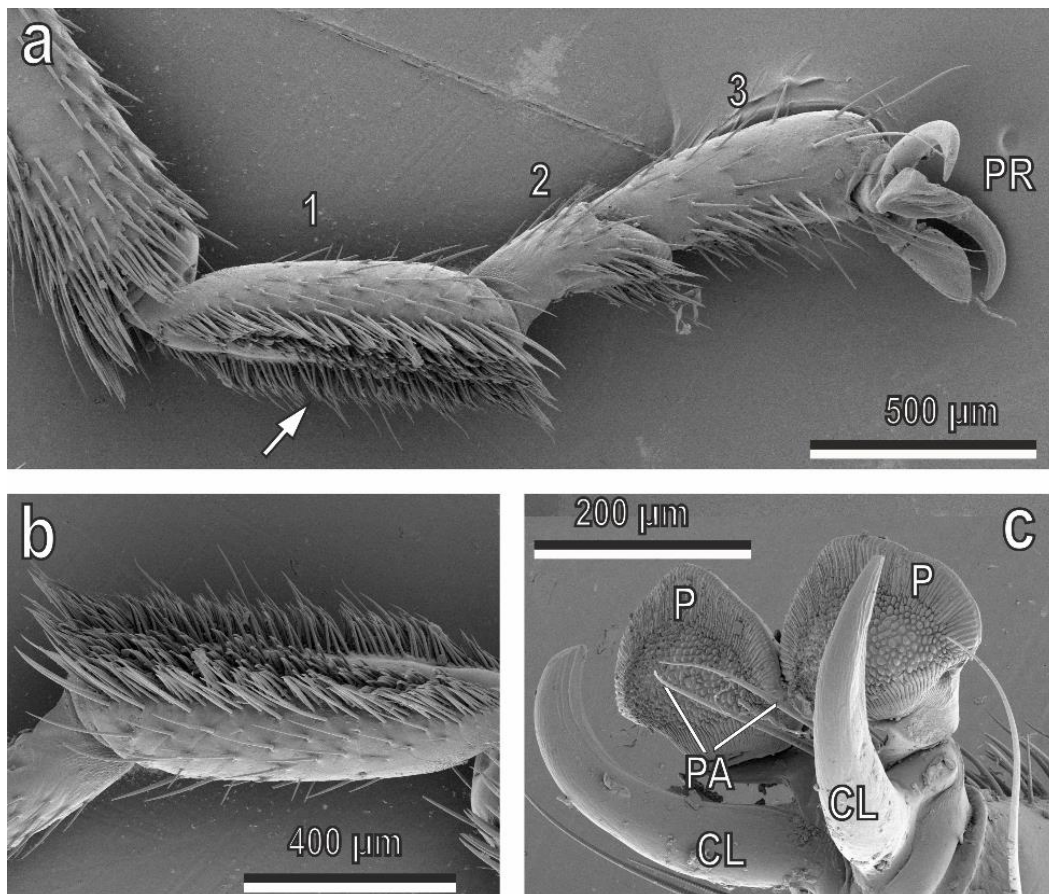


Attachment ability of the polyphagous bug *Nezara viridula* (Heteroptera: Pentatomidae) to different host plant surfaces

Gianandrea Salerno, Manuela Rebora, Elena Gorb, Stanislav Gorb



Supplementary Fig. S1 online. Tarsus of *Nezara viridula* visualized under cryo - SEM. **a** Lateral view of the three tarsal segments (1-3) and of the pretarsus (PR). Note the ventral adhesive setae at the basitarsus (arrow). **b** Ventral view of the basitarsus showing the two rows of setae of the hairy adhesive pad. **c** Dorsal view of the pretarsus showing two curved claws (CL), two pulvilli (P) and two paraempodia (PA).