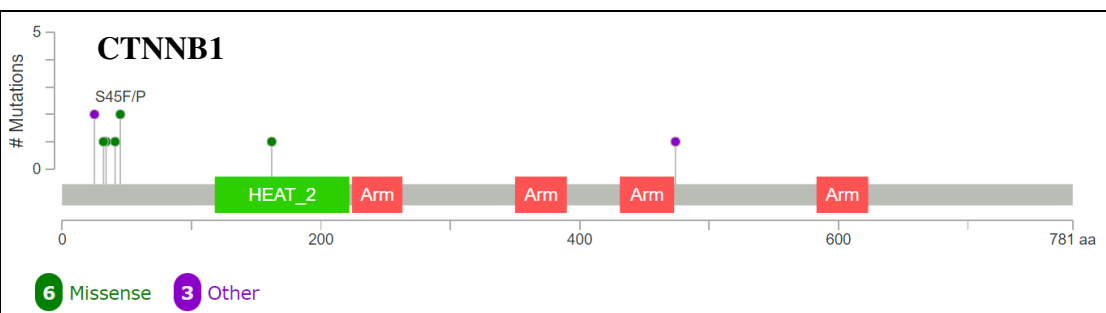
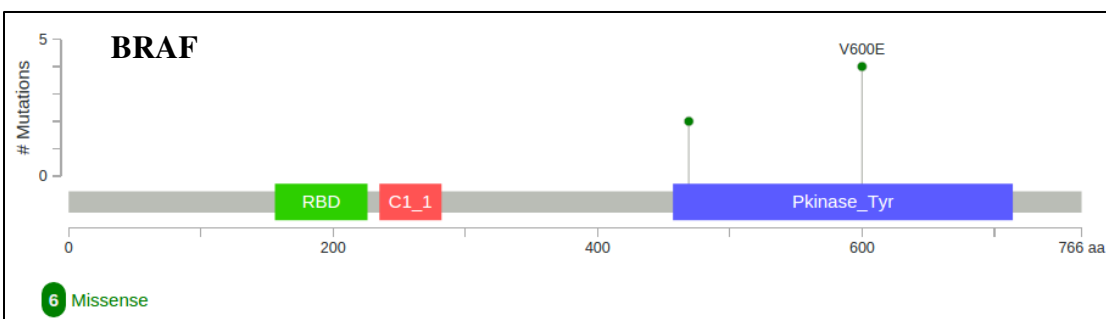
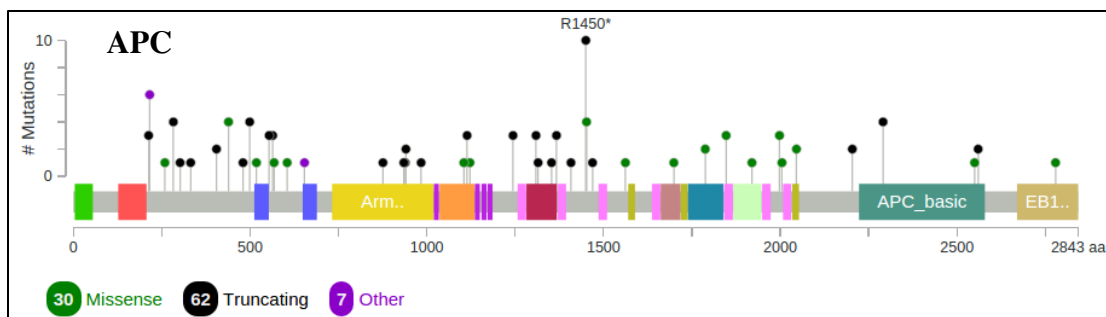
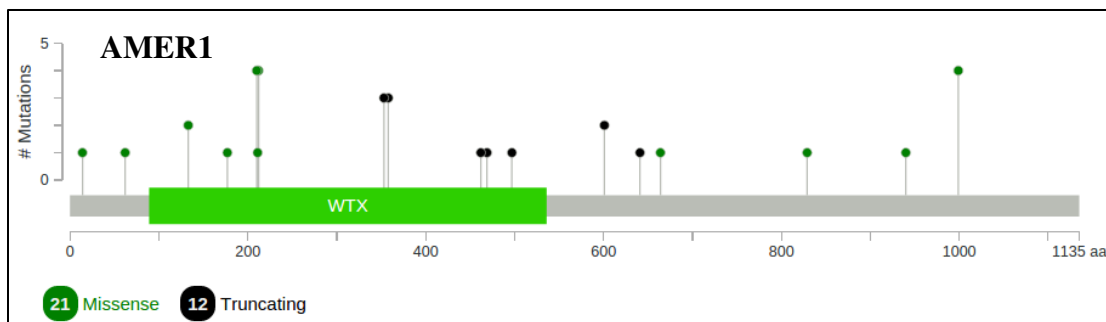
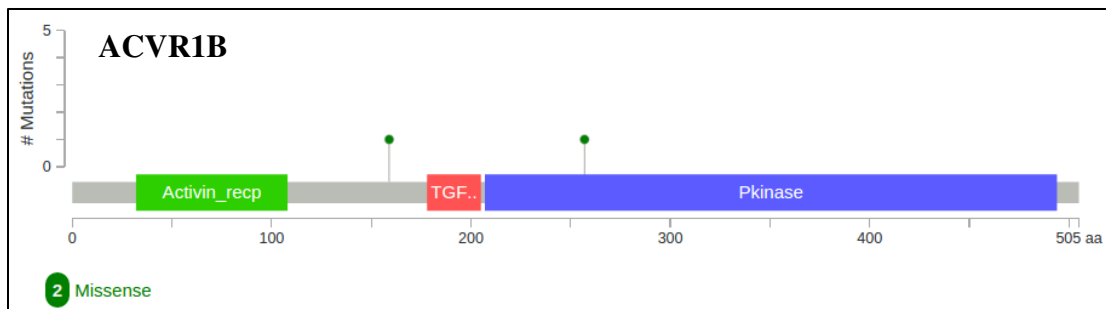
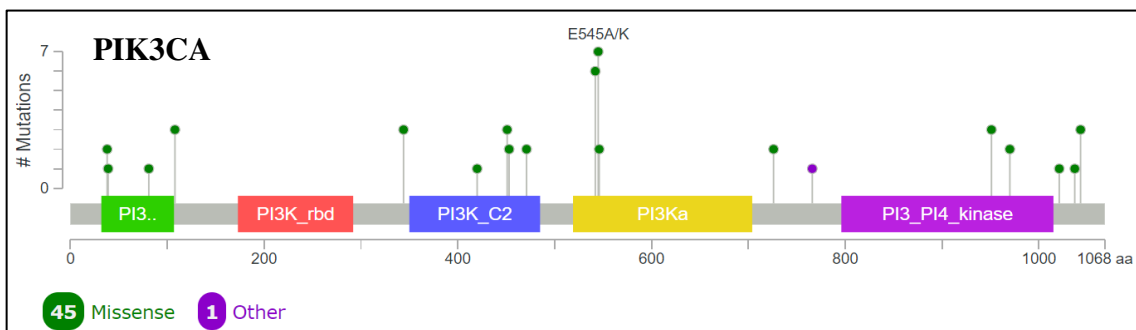
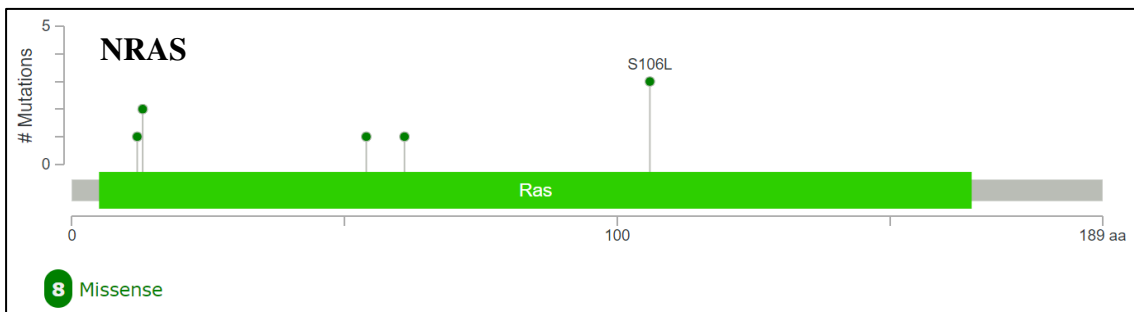
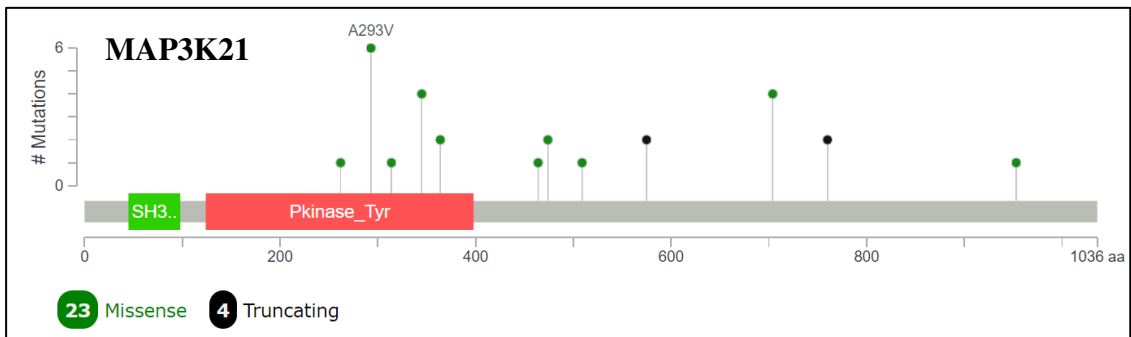
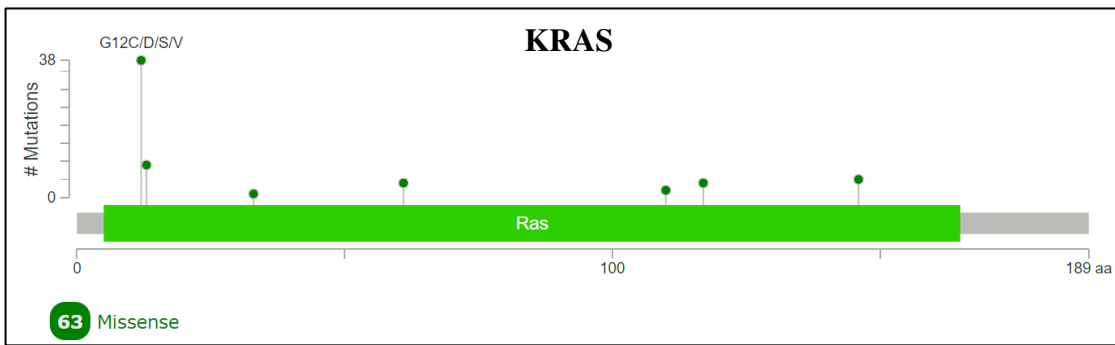
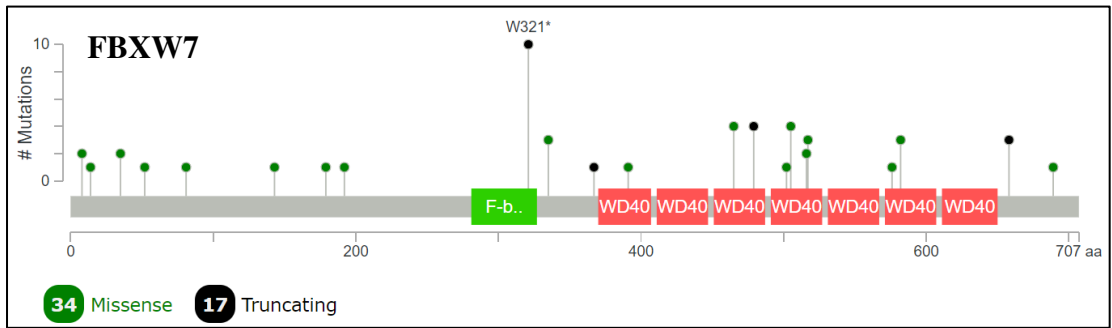
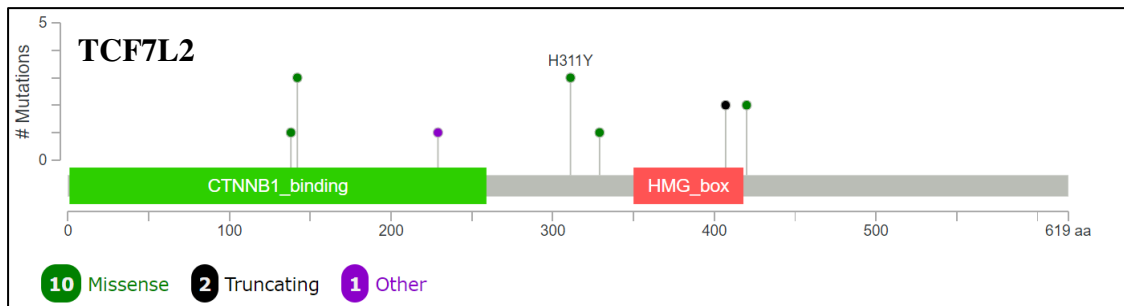
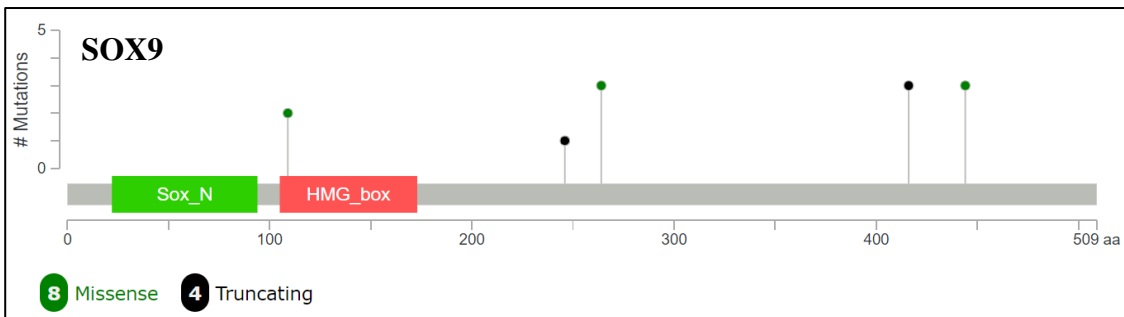
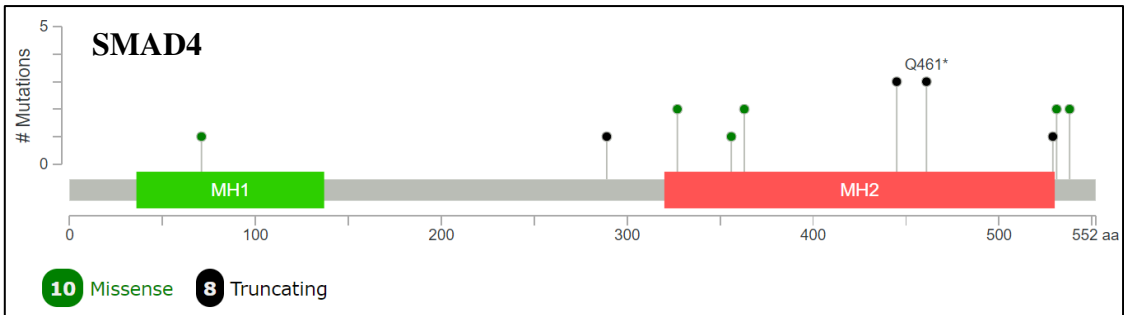
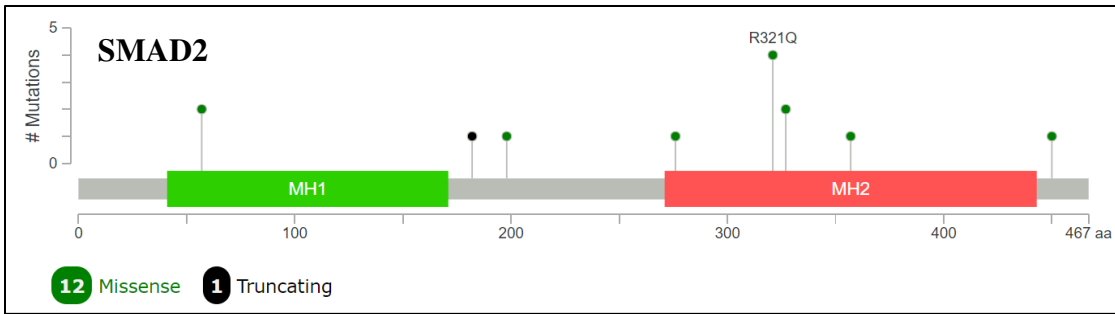
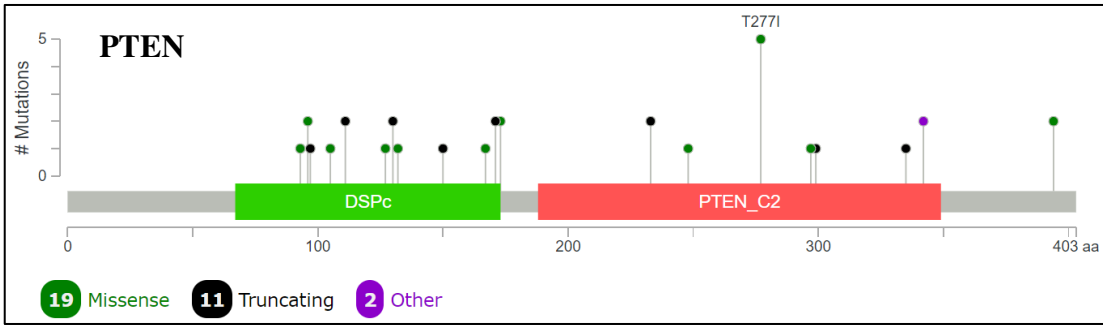
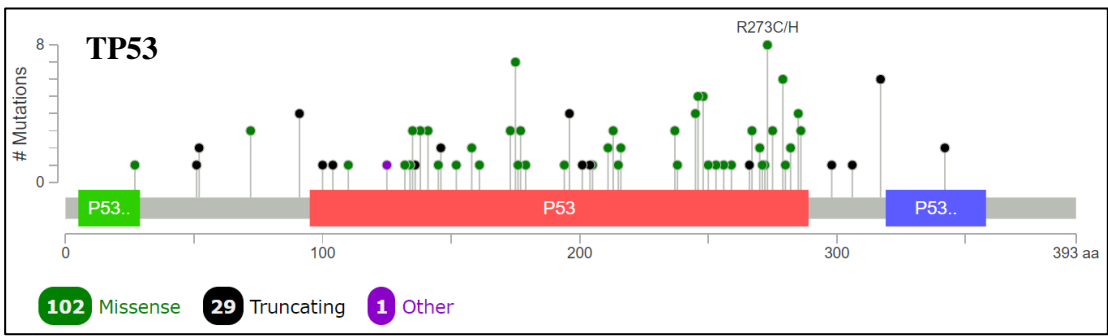


Supplementary Figure 1: MutationMapper illustrating the detected mutations (and their nature) represented on the linear proteins.

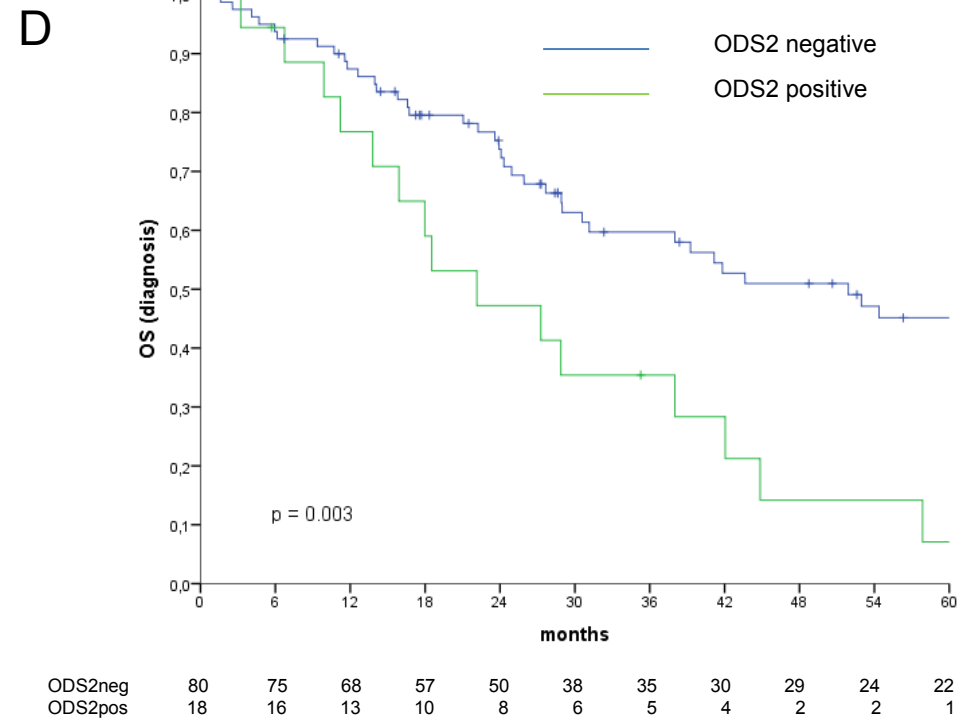
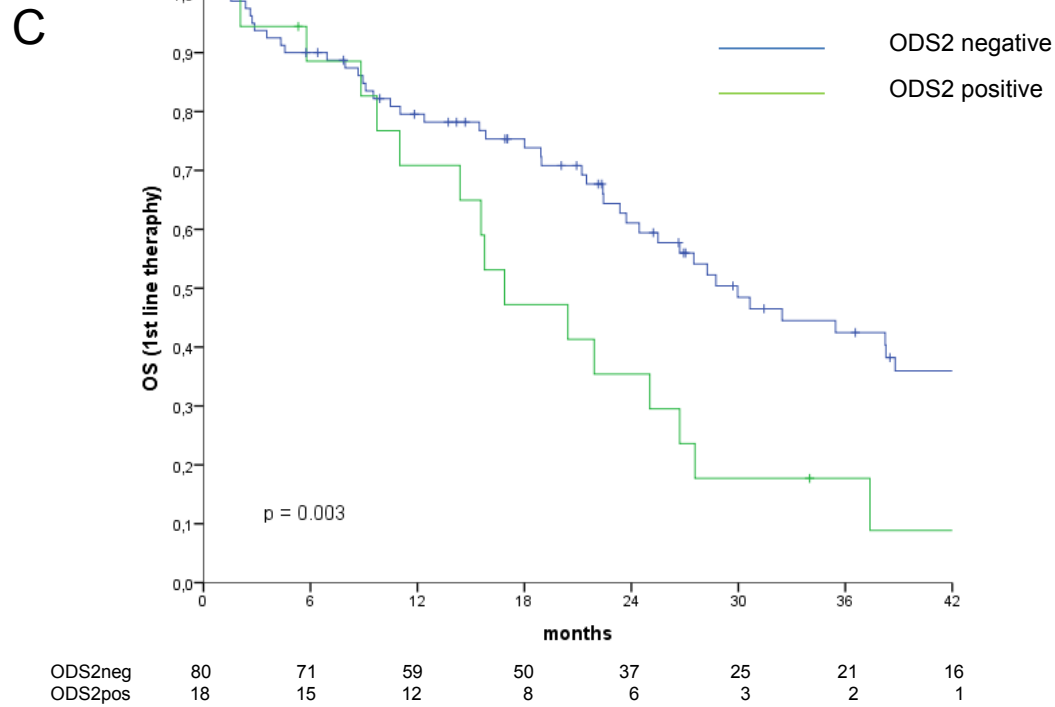
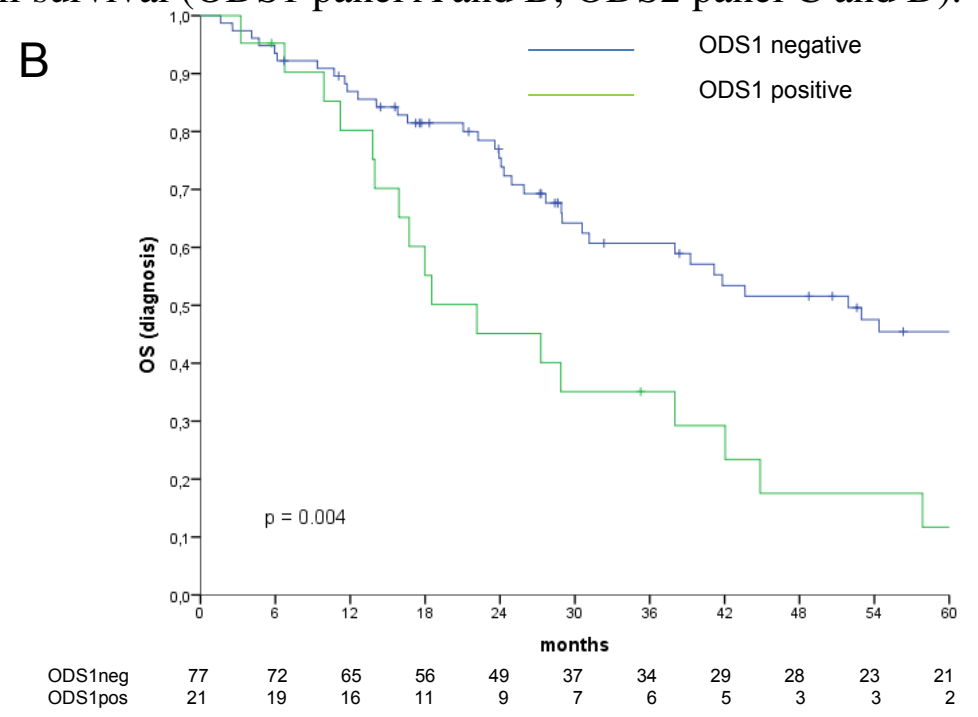
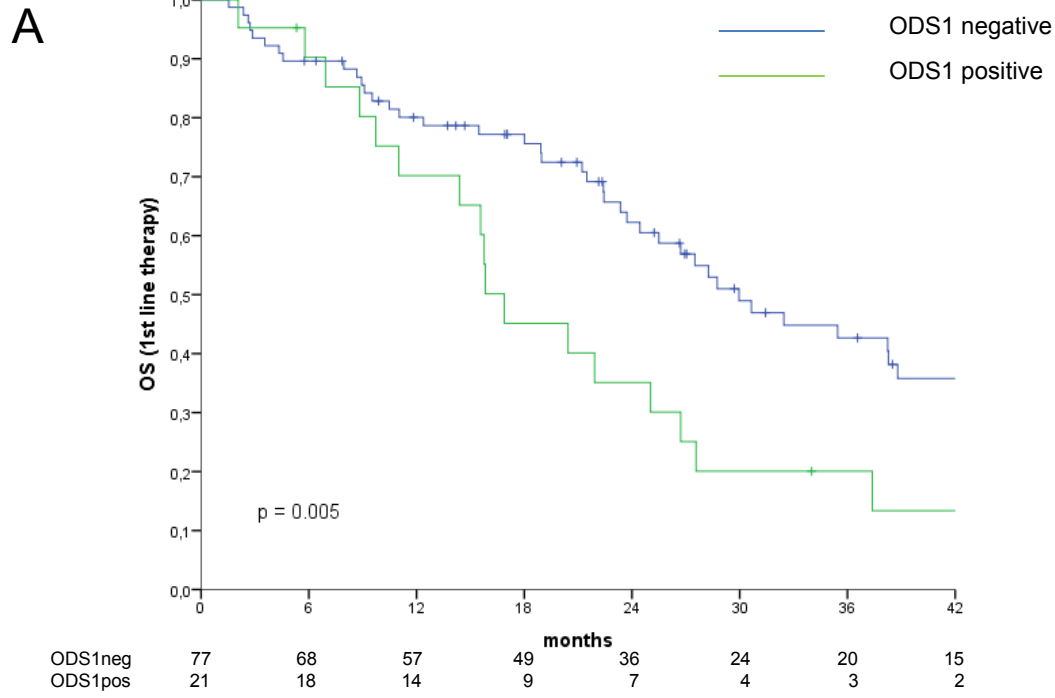








Supplementary Figure 2: Kaplan-Meier survival curves of overall survival (ODS1 panel A and B; ODS2 panel C and D).



Supplementary Table 1: Mutation frequencies related to 16 CRC-associated genes observed in the present study (IRE-IFO) and in four publically available datasets (TCGA, DFCI, MSKCC, Genentech).

GENE (PATHWAY)	IRE-IFO (N=98)	TCGA (N=224)	DFCI (N=619)	MSKCC (N=69)	GENENTECH (N=72)
ACVR1B (TGF- β)	1%	6%	5%	0%	1.5%
AMER1 (WNT)	7%	11%	8%	9%	6%
APC (WNT)	53%	75%	57%	91%	40%
BRAF (RAS-MAPK)	6%	9%	20%	4%	8%
CTNNB1 (WNT)	5%	5%	6%	7%	7%
FBXW7 (WNT)	21%	17%	13%	9%	21%
KRAS (RAS-MAPK)	58%	42%	28%	55%	51%
MAP3K21 (RAS-MAPK)	17%	7%	4%	0%	0%
NRAS (RAS-MAPK)	8%	9%	4%	3%	3%
PIK3CA (PI3K-PTEN)	33%	20%	21%	22%	31%
PTEN (PI3K-PTEN)	20%	4%	8%	3%	6%
SMAD2 (TGF- β)	8%	7%	5%	0%	8%
SMAD4 (TGF- β)	12%	12%	11%	14%	24%
SOX9 (WNT)	11%	4%	10%	0%	3%
TCF7L2 (WNT)	8%	12%	7%	0%	8%
TP53 (p53 network)	65%	54%	50%	83%	56%

Supplementary Table 2: Statistically significant associations between the mutational status of 16 CRC-related genes and basal clinical features (N=98).

	Stage at diagnosis		Chi2 Test p-value
	II-III N(%)	IV N(%)	
AMERwt	29 (31.9)	62 (68.1)	0.047*
AMERmut	5 (71.4)	2 (28.6)	
PTENwt	23 (29.5)	55 (70.5)	0.032
PTENmut	11 (55.0)	9 (45.0)	
ECOG PS			
	0 N(%)	1-2 N(%)	
CTNNB1wt	42 (45.2)	51 (54.8)	0.023*
CTNNB1mut	5 (100.0)	0 (0.0)	
TP53wt	11 (32.4)	23 (67.6)	0.024
TP53mut	36 (56.3)	28 (43.8)	
Number of Metastatic Sites			
	1 N(%)	≥2 N(%)	
FBXW7wt	36 (46.8)	41 (53.2)	0.017
FBXW7mut	16 (76.2)	5 (23.8)	
Side			
	Left N(%)	Right + Transverse N(%)	
KRASwt	28 (68.3)	13 (31.7)	0.039
KRASmut	27 (47.4)	30 (52.6)	
TP53wt	14 (41.2)	20 (58.8)	0.030
TP53mut	41 (64.1)	23 (35.9)	

* Fisher's Exact Test

Supplementary Table 3: Mutational status of the genes included in the OncoDriver signature 1 and 2 (ODS1 and ODS2).

GENE SIGNATURE	TP53	APC	AMER1	TCF7L2	FBXW7	SOX9	CTNNB1
ODS1	MUT	MUT	WT	WT	WT	Not Included	Not Included
ODS2	MUT	MUT	WT	WT	WT	WT	WT

Supplementary Table 4: Univariate and multivariate Cox regression models for progression-free survival (N=98). The multivariate Cox models were obtained by adjusting for all the variables tested in univariate analysis.

		Univariate Cox regression model		Multivariate Cox regression model (ODS1 pos vs neg)		Multivariate Cox regression model (ODS2 pos vs neg)	
		HR (95%CI)	p-value	HR (95%CI)	p-value	HR (95%CI)	p-value
ODS1	Pos vs Neg	2.42 (1.44-4.06)	0.001	2.16 (1.26-3.70)	0.005		
ODS2	Pos vs Neg	2.76 (1.59-4.80)	<0.001			2.56 (1.45-4.51)	0.001
Gender	Female vs Male	0.79 (0.51-1.24)	0.315	0.84 (0.53-1.35)	0.478	0.82 (0.51-1.30)	0.399
ECOG PS	1-2 vs 0	1.25 (0.82-1.89)	0.293	1.24 (0.81-1.90)	0.329	1.19 (0.78-1.83)	0.413
Side	DX+TV vs SX	0.93 (0.61-1.41)	0.730	0.90 (0.57-1.44)	0.675	0.87 (0.55-1.39)	0.559
Targeted Agent in first line therapy	Yes vs No	0.86 (0.57-1.31)	0.498	0.80 (0.51-1.27)	0.354	0.83 (0.53-1.31)	0.434
Surgery for metastatic disease	Yes vs No	0.63 (0.40-1.01)	0.054	0.60 (0.37-0.97)	0.039	0.59 (0.36-0.95)	0.032
Number of metastatic sites	2-3 vs 1	1.75 (1.14-2.68)	0.010	1.84 (1.17-2.89)	0.009	1.91 (1.21-3.00)	0.005

Supplementary Table 5: Uni- and multivariate Cox regression models for overall survival (N=98). The multivariate Cox models were obtained by adjusting for all the variables tested in univariate analysis.

		Univariate Cox regression model		Multivariate Cox regression model (ODS1 pos vs neg)		Multivariate Cox regression model (ODS2 pos vs neg)	
		HR (95% CI)	p-value	HR (95% CI)	p-value	HR (95% CI)	p-value
ODS1	Pos vs Neg	2.21 (1.26-3.88)	0.006	1.96 (1.07-3.59)	0.030		
ODS2	Pos vs Neg	2.34 (1.31-4.20)	0.004			2.22 (1.18-4.16)	0.013
Gender	Female vs Male	0.79 (0.47-1.33)	0.369	0.63 (0.36-1.11)	0.109	0.61 (0.35-1.08)	0.091
Stage at diagnosis	IV vs II-III	1.24 (0.74-2.08)	0.412	1.23 (0.72-2.12)	0.445	1.20 (0.70-2.05)	0.515
ECOG PS	1-2 vs 0	2.12 (1.28-3.52)	0.003	1.89 (1.10-3.25)	0.021	1.83 (1.06-3.14)	0.030
Side	DX+TV vs SX	1.07 (0.66-1.76)	0.777	0.86 (0.50-1.49)	0.588	0.83 (0.48-1.42)	0.491
Second line therapy	Yes vs No	0.29 (0.17-0.48)	<0.001	0.17 (0.09-0.32)	<0.001	0.16 (0.09-0.31)	<0.001
Surgery for metastatic disease	Yes vs No	0.58 (0.34-0.99)	0.046	0.49 (0.28-0.88)	0.016	0.50 (0.28-0.90)	0.020
Number of metastatic sites	2-3 vs 1	1.40 (0.85-2.33)	0.188	1.83 (1.05-3.17)	0.031	1.85 (1.07-3.20)	0.028
Targeted Agents	Yes vs No	0.66 (0.40-1.07)	0.094	0.83 (0.48-1.43)	0.503	0.81 (0.47-1.40)	0.449