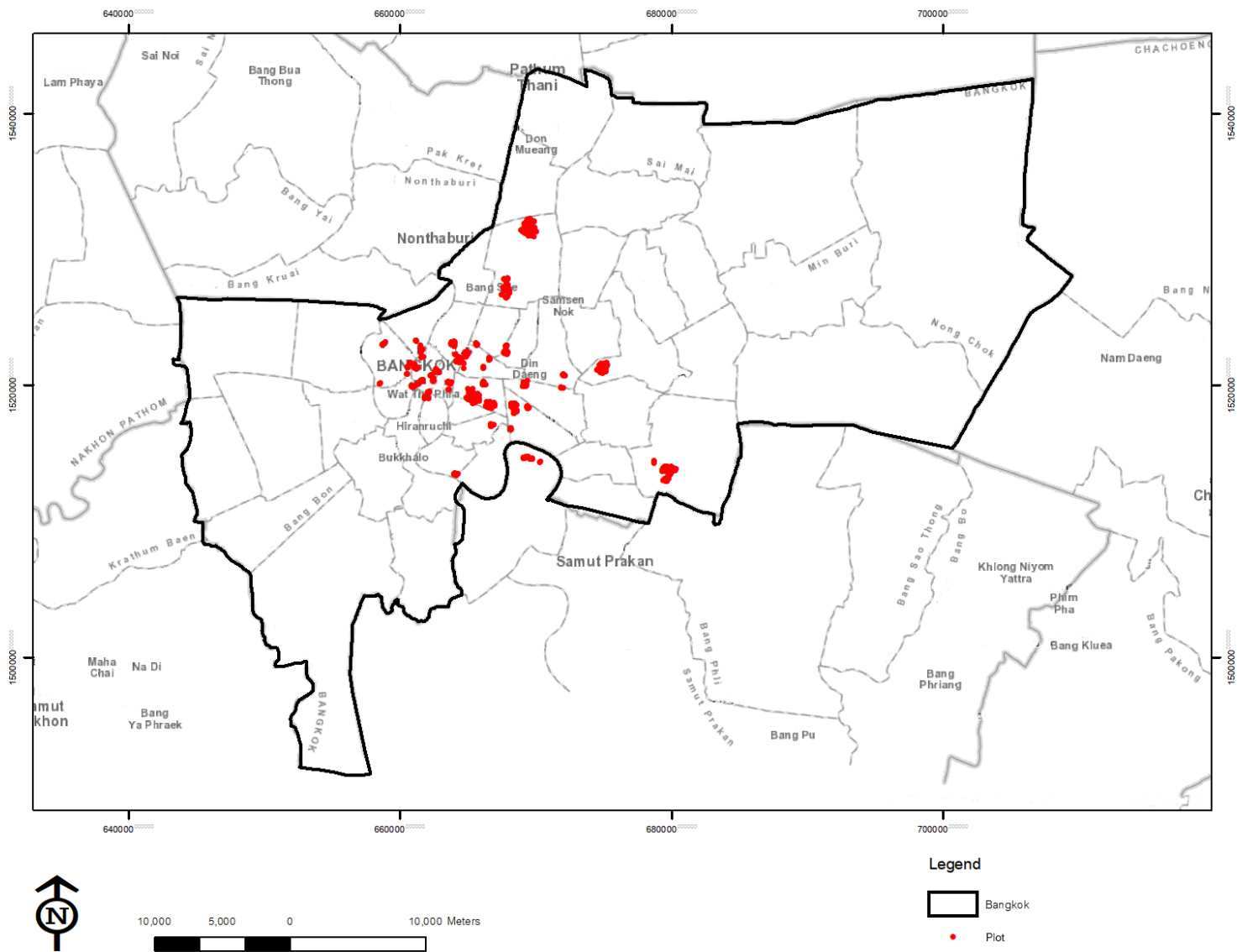
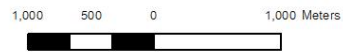
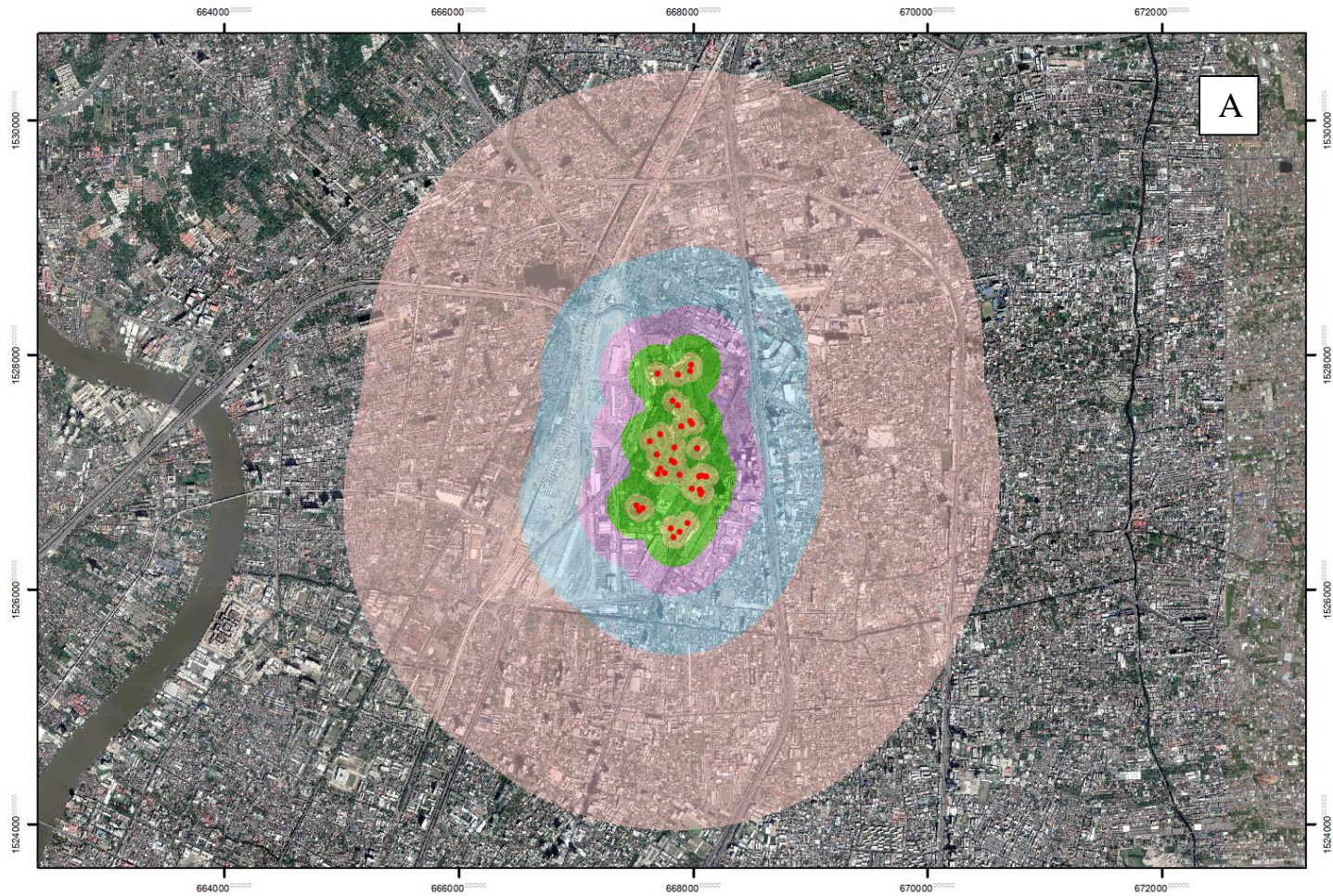


Habitat and landscape factors influence pollinators in a tropical megacity, Bangkok, Thailand

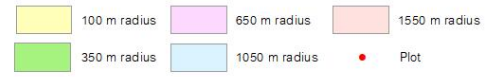
Supplemental Figure S1. Maps of the study area.

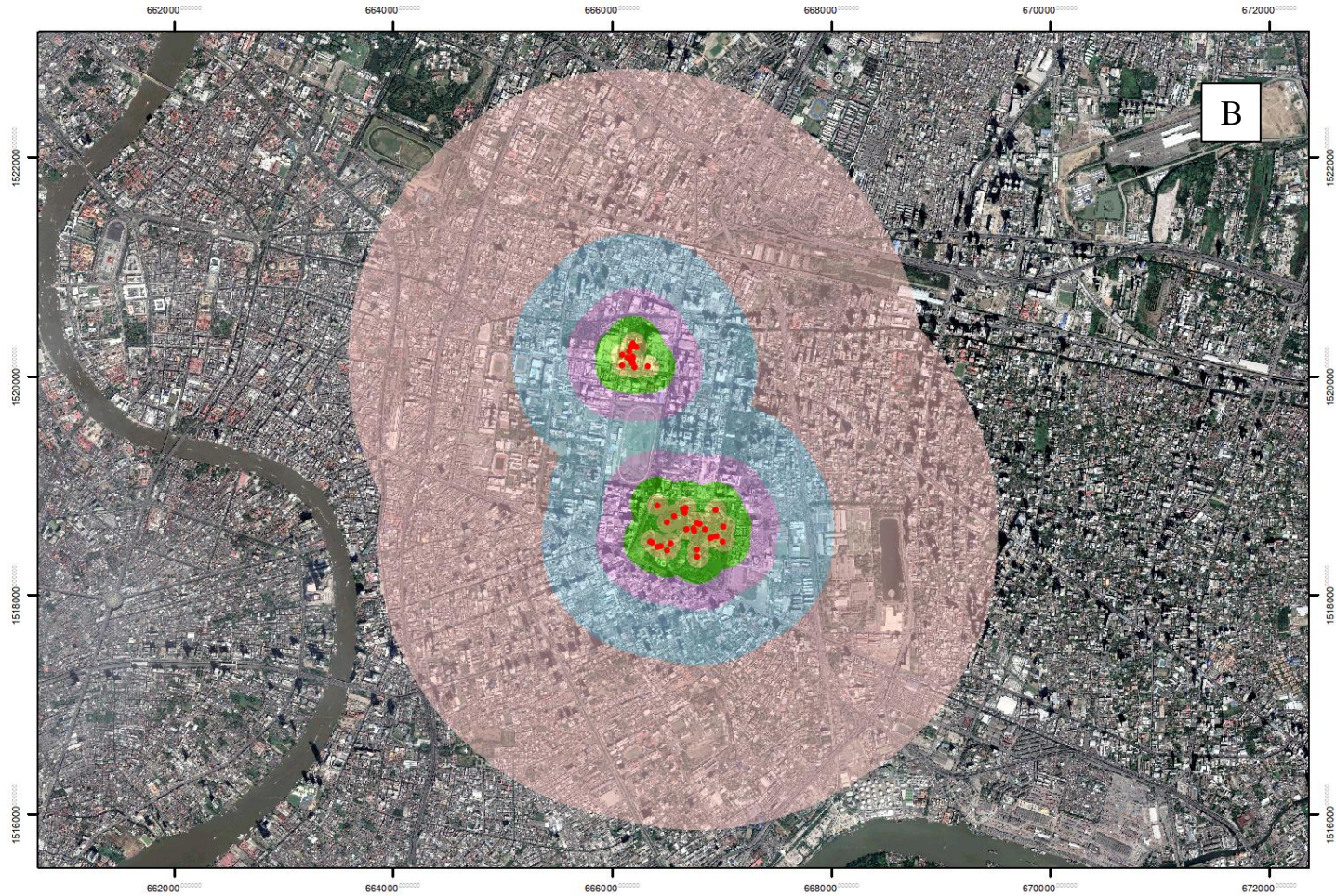


Supplemental Figure S1a. A map of Bangkok, Thailand, showing all 52 green areas used in the study.

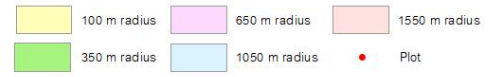


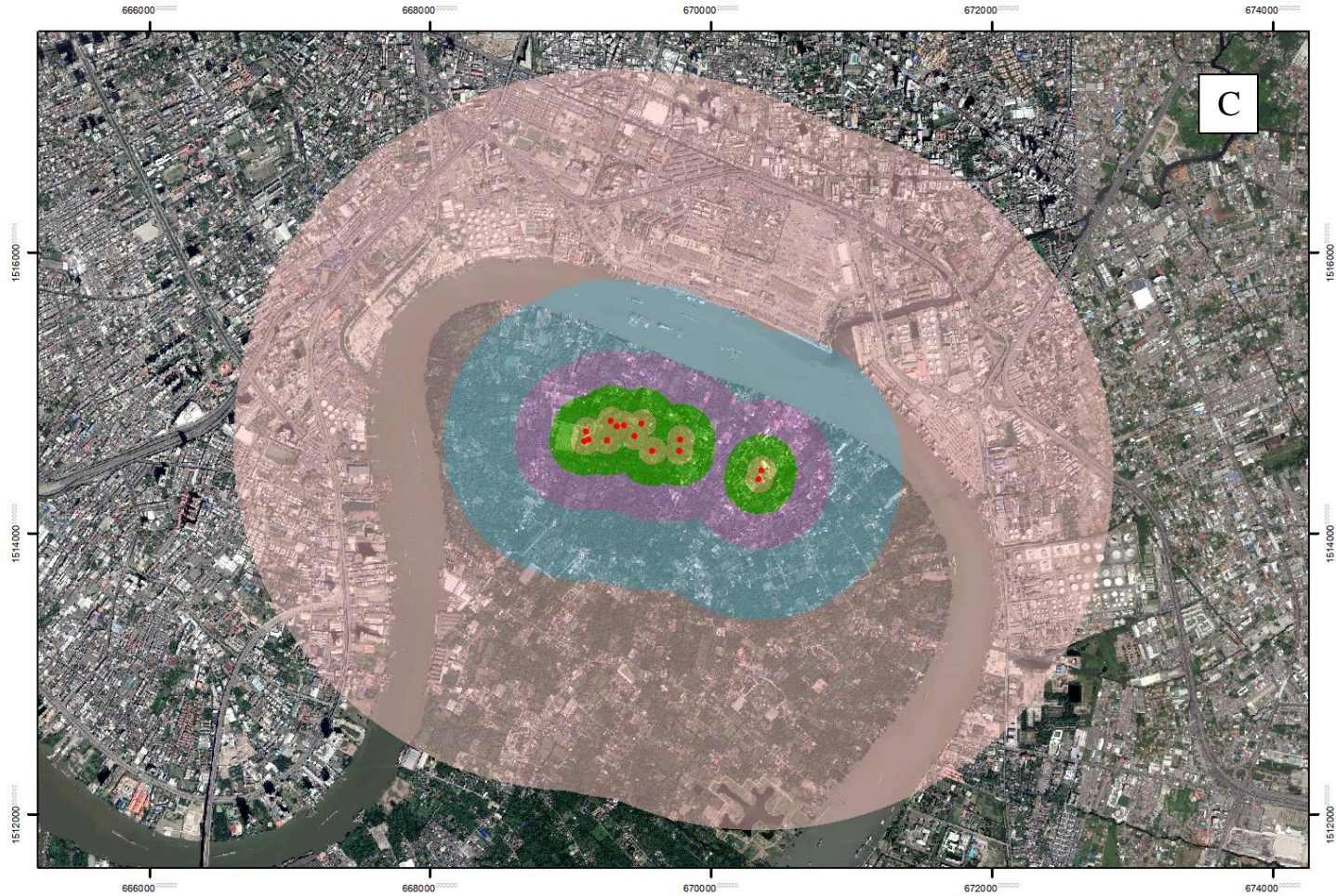
Legend



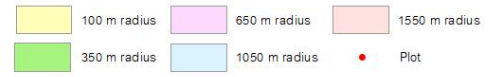


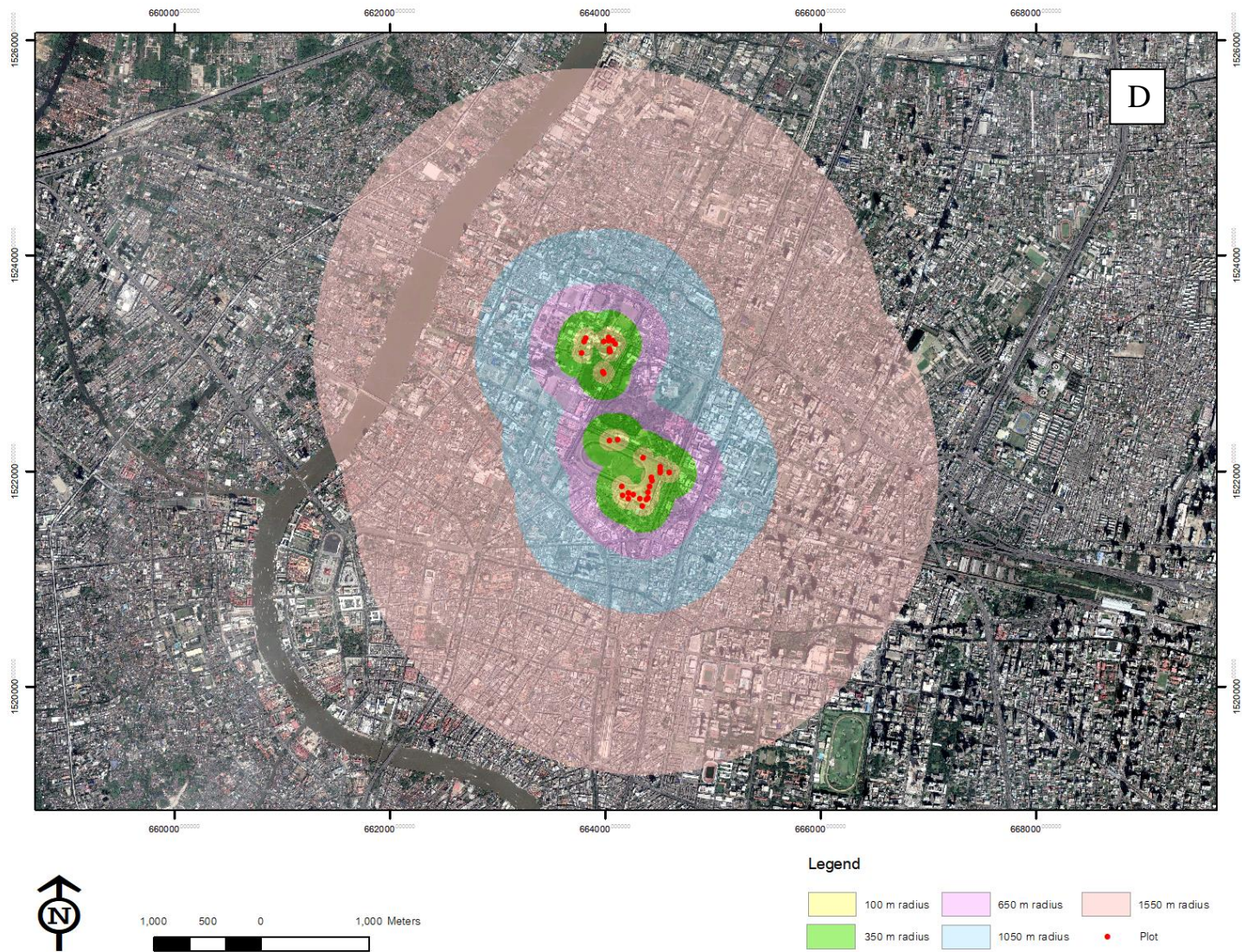
Legend





Legend





Supplemental Figure S1b. Representative samples of how we measured percent vegetation surrounding each plot within 5 concentric circles (yellow, 100 m; green, 350 m; purple, 650 m; blue, 1,050 m; and pink 1,550 m radiuses). Top to bottom: (A) Suan Wachirabenchatat, (B) Wat Pathum Wanaram and Suan Lumpini, (C) Suan Sri Nakhon Khuean Khan (left) and School Sumran Wittaya (right), and (D) Dusit Zoo and Dusit Golf Course.