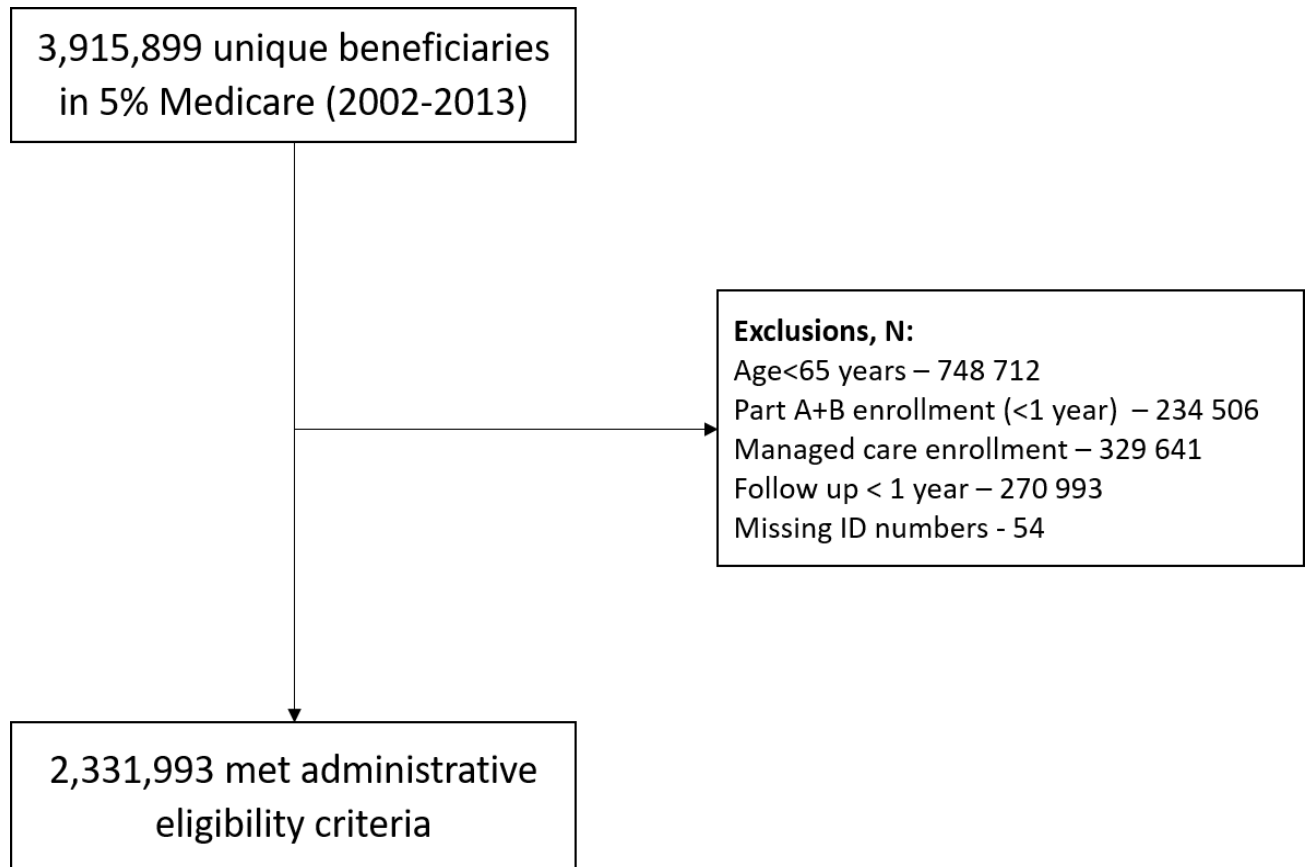


SUPPLEMENTAL MATERIAL

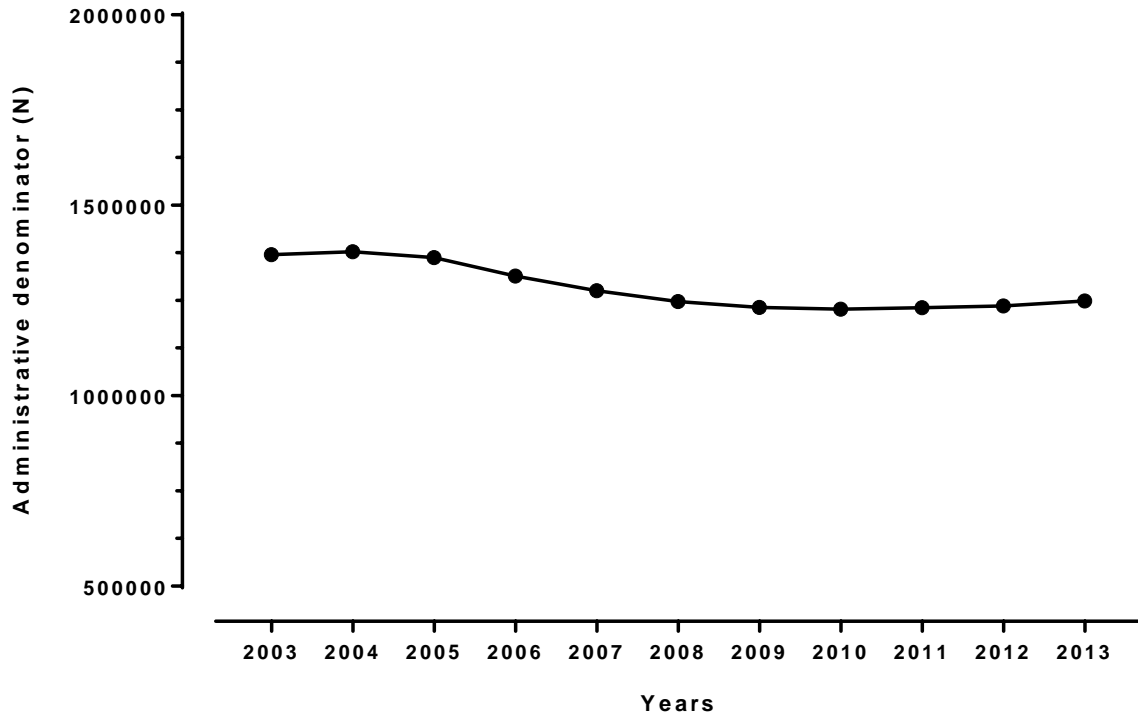
Contemporary Epidemiology of Heart Failure in Fee-for-service Medicare Beneficiaries

Rohan Khera MD, Ambarish Pandey MD, Colby Ayers MS, Vijay Agusala BS, Sandi Pruitt
PhD, Ethan Halm MD MPH, Mark Drazner MD, Sandeep R. Das MD MPH, James A de Lemos
MD, Jarett D. Berry MD MS

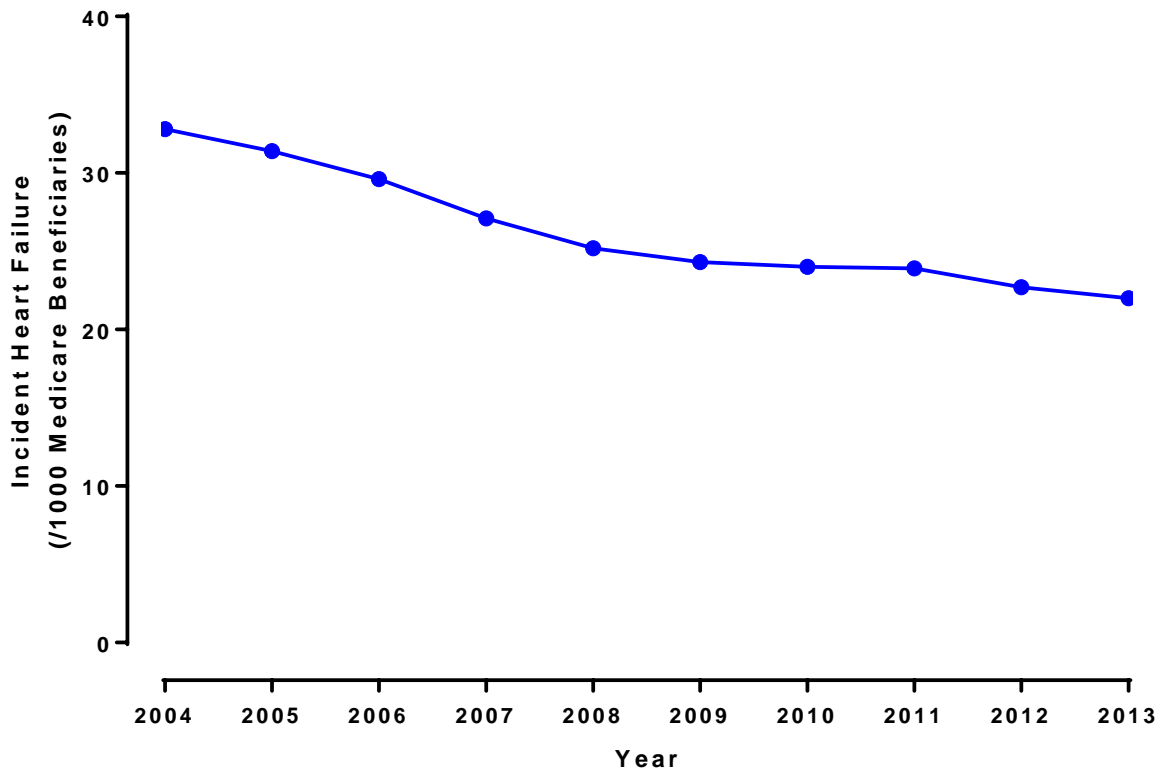
eFigure 1: Study selection flowsheet



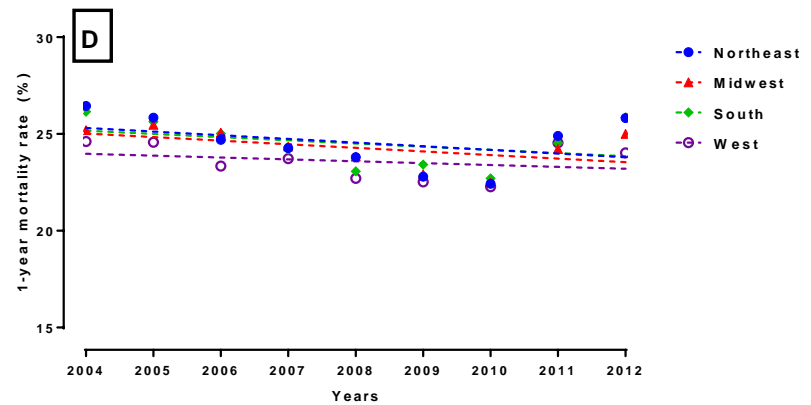
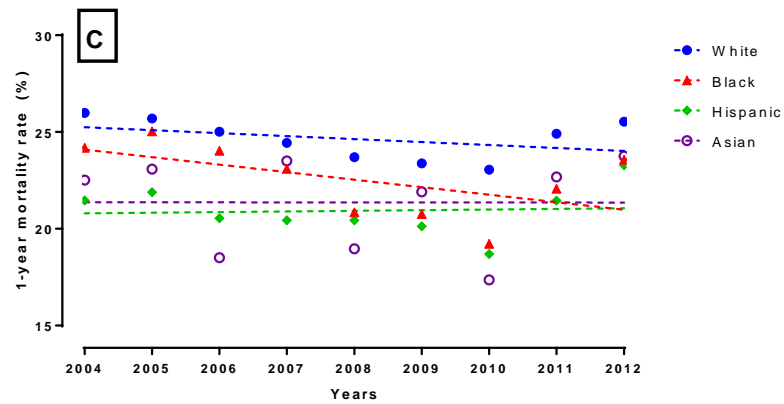
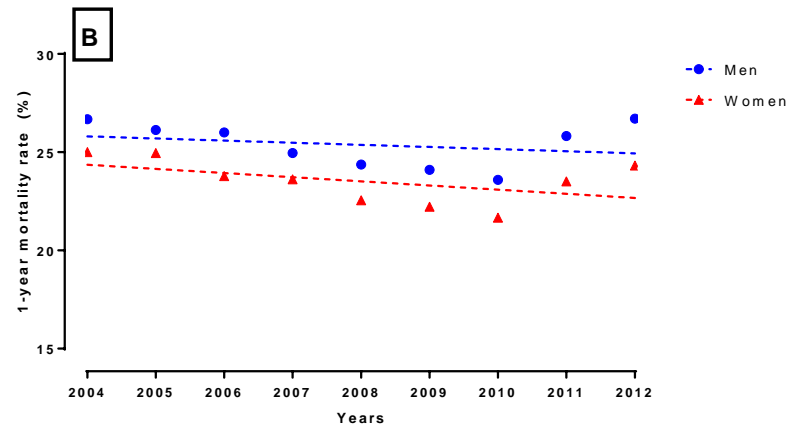
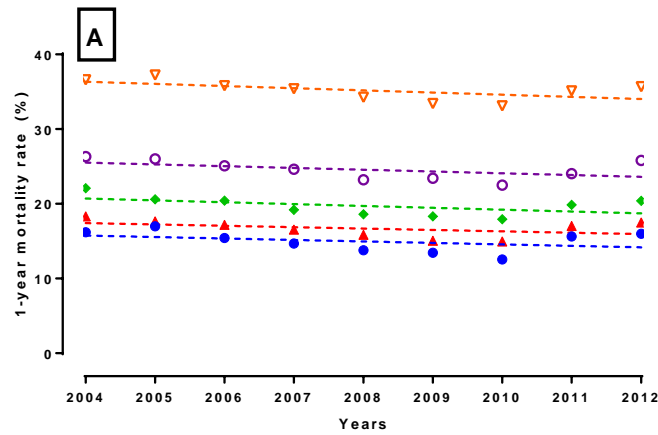
eFigure 2: Number of eligible Medicare beneficiaries in the denominator, by calendar year



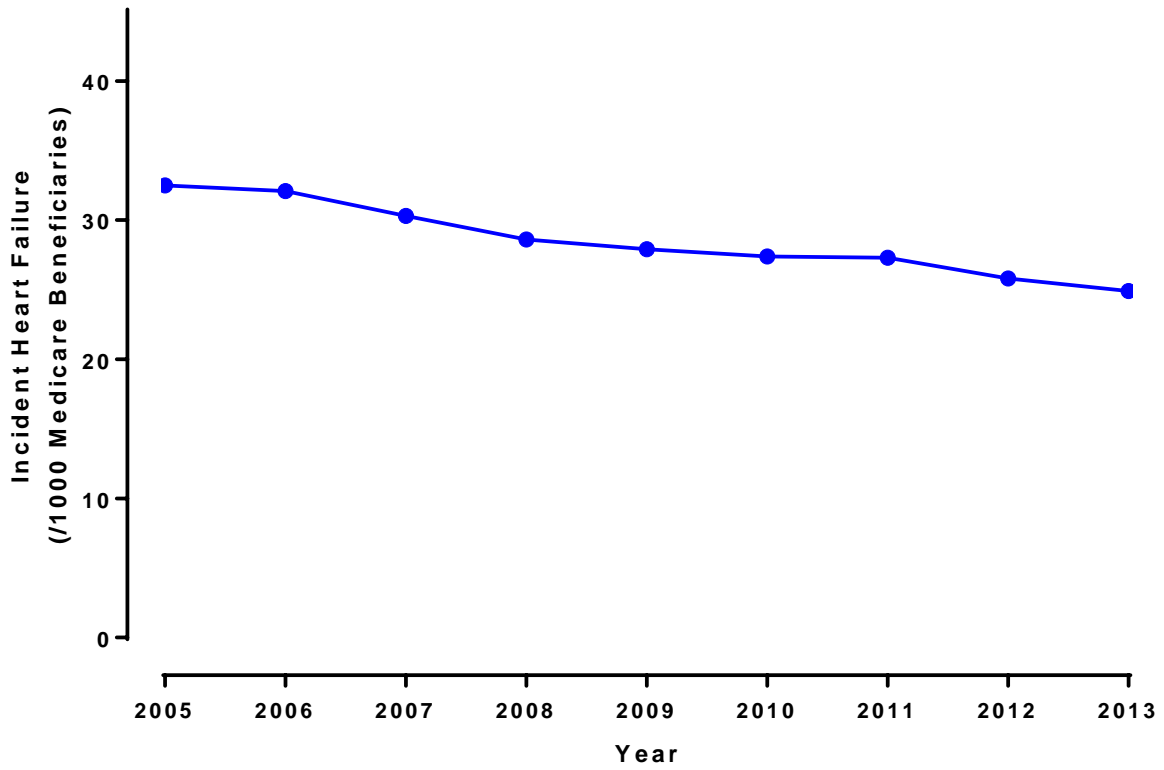
eFigure 3: Age-adjusted trends in heart failure incidence (overall)



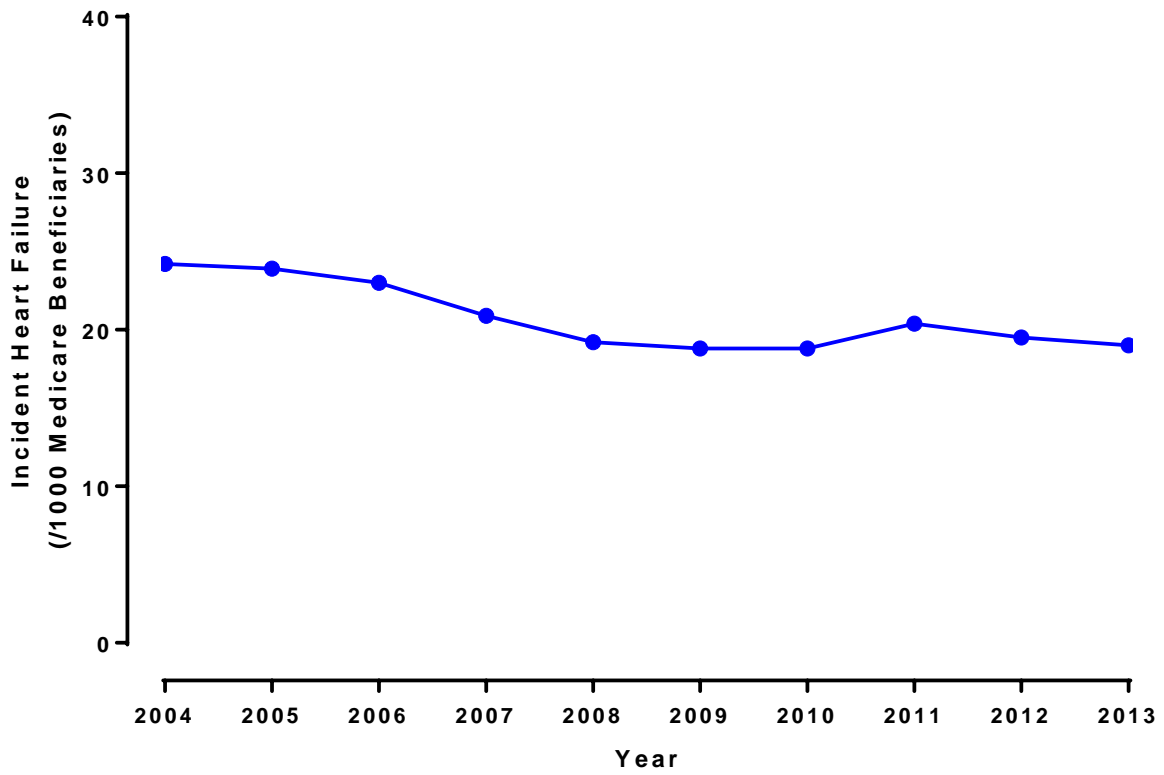
eFigure 4: Observed 1-year mortality rates in subgroups based on (A) age, (B) sex, (C) race/ethnicity, (D) U.S. census regions.



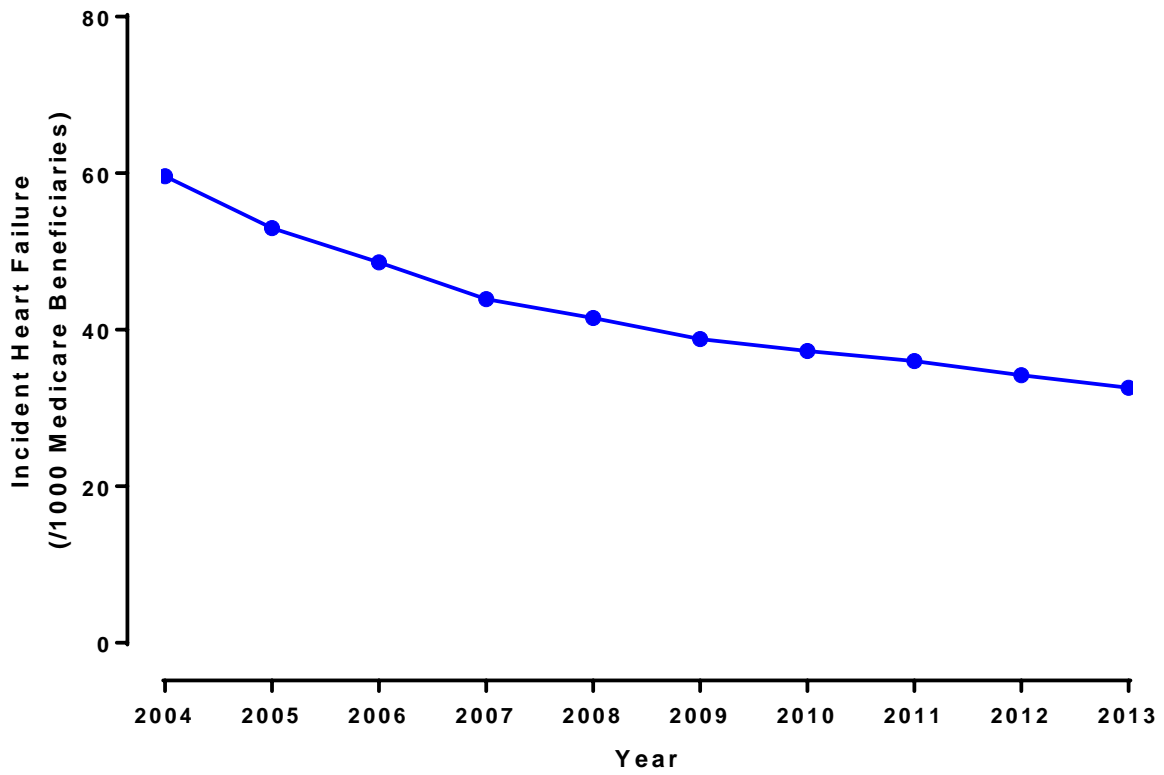
eFigure 5: Sensitivity analysis - trends in heart failure incidence with 2-year lookback period.



eFigure 6: Sensitivity analysis - trends in heart failure incidence with at least 1 hospitalization with heart failure required for heart failure diagnosis.



eFigure 7: Sensitivity analysis - trends in heart failure incidence with 1 inpatient or 1 outpatient encounter for heart failure diagnosis.



eFigure 8: Sensitivity analysis - trends in heart failure incidence with 1 inpatient or 3 outpatient encounters for heart failure diagnosis.

