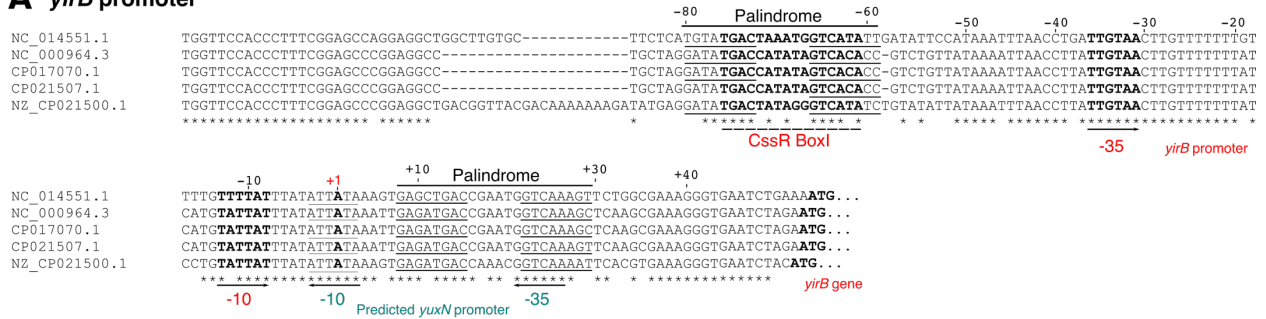
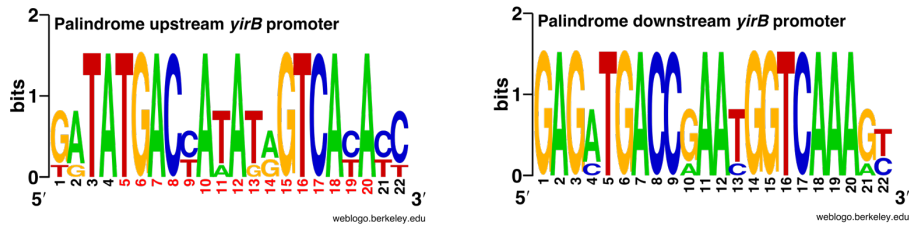


### A *yirB* promoter



### B



**Fig S4 Palindromic sequences in the *yirB* and *yuxN* promoters.** A) Promoter region of the *yirB* and *yuxN* promoters in different *Bacillus* species. In descending order, *Bacillus amyloliquefaciens* DSM7 [NC\_014551.1], *Bacillus subtilis* strain 168 [NC\_000964.3], *Bacillus gibsonii* strain FJAT-10019 [CP17070.1], *Bacillus atrophaeus* strain [SRCM101359], and *Bacillus licheniformis* strain [SRCM101441]. The mapped *yirB* promoter and the predicted *yuxN* promoter are also displayed, as well as the palindrome sequences found on both promoters. B) DNA logos were created for the *yirB* and *yuxN* palindromes, as observed they display remarkable similarity.