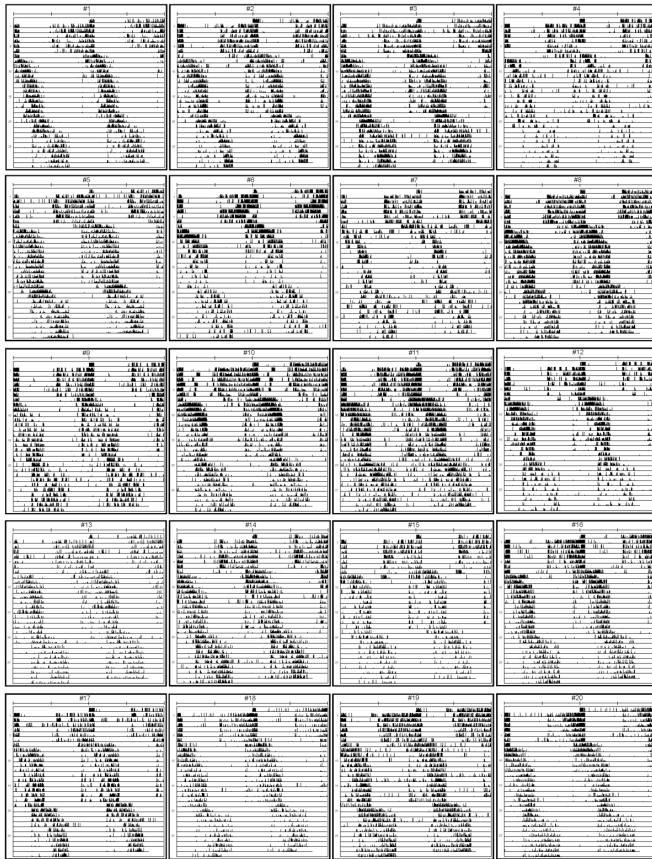
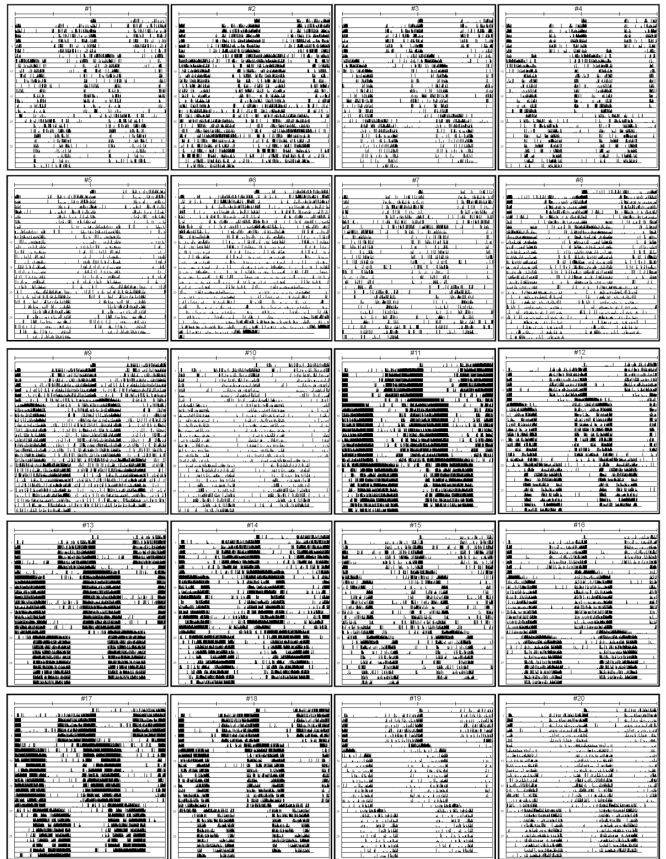


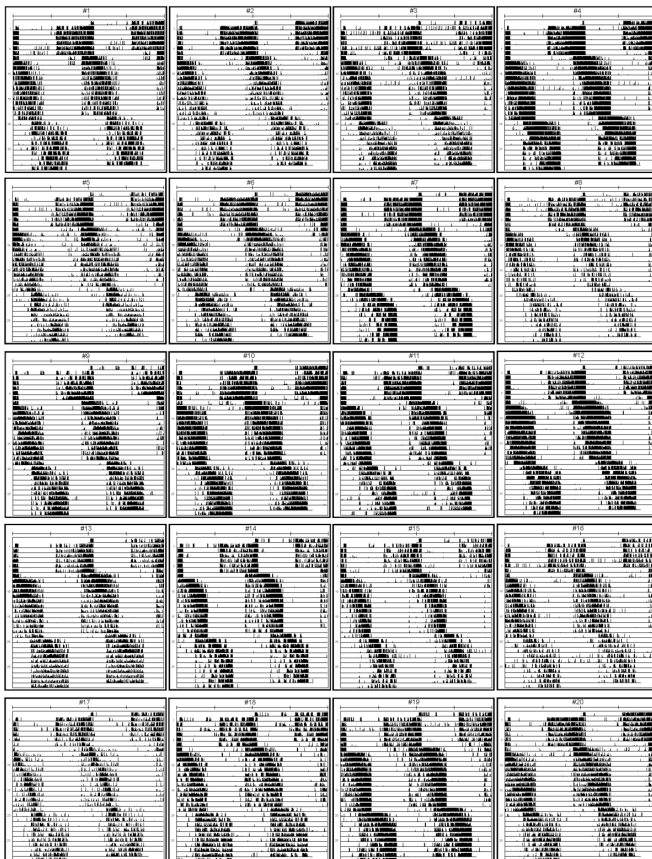
cry⁰¹ (WT_{CantonS})



WT_{CantonS}



cry⁰¹ (WT_{Lindelbach})



WT_{Lindelbach}

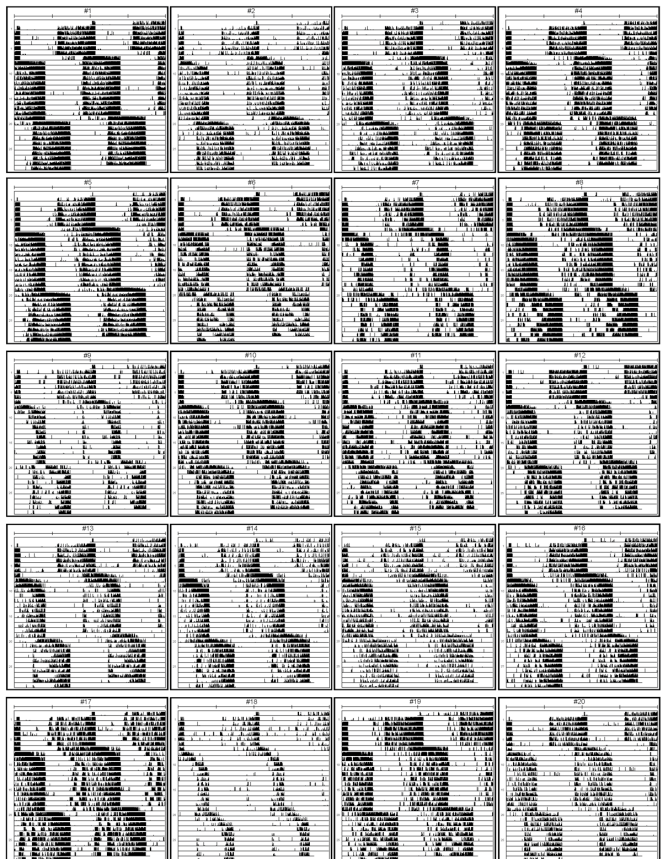


Figure S8. Individual actograms of wildtype flies and *cry⁰¹* mutants in two different backgrounds (CantonS and Lindelbach) that were subjected to a 8h shift of a 12:12h red light dark cycle.