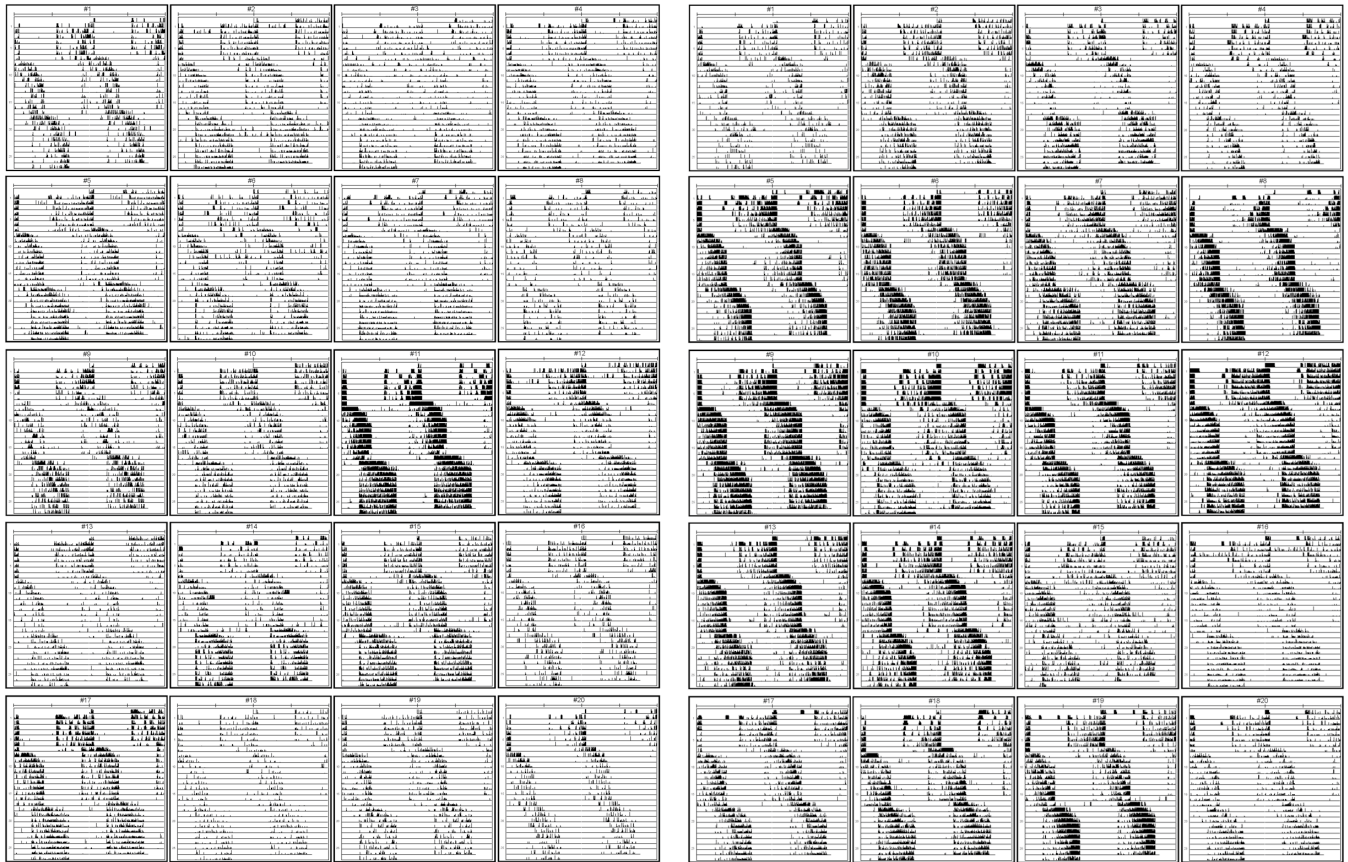


cry⁰¹ ninaE-gal4 control

cry⁰¹ uas-cry control



cry⁰¹ ninaE-gal4 uas-cry

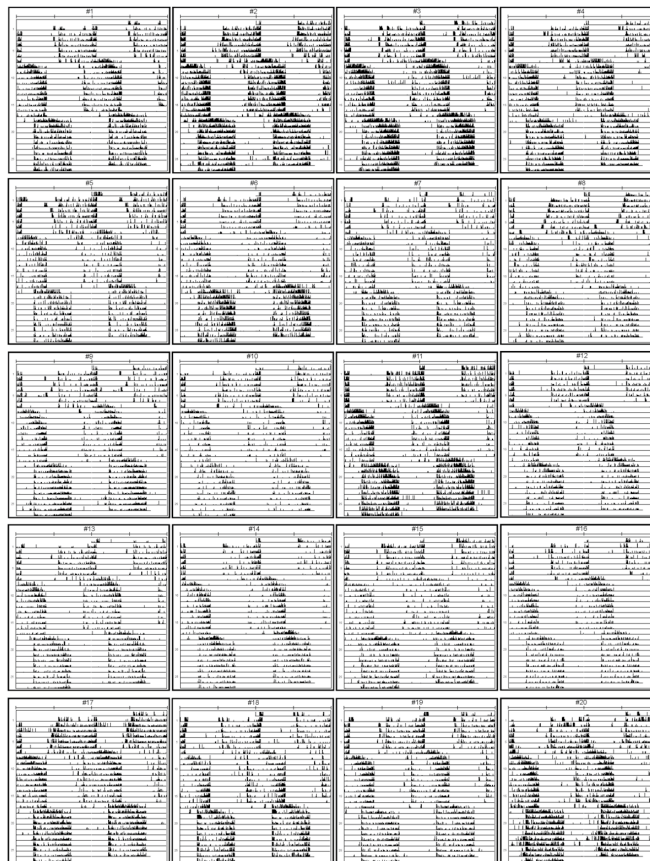


Figure S9. Individual actograms of *cry⁰¹* mutant controls (upper two panels) and *cry⁰¹* mutants, in which CRY was rescued in photoreceptors 1 to 6 (lower panel).