

Supplementary Materials for

Global hot spots of transshipment of fish catch at sea

Kristina Boerder*, Nathan A. Miller, Boris Worm

*Corresponding author. Email: kristina.boerder@dal.ca

Published 25 July 2018, *Sci. Adv.* **4**, eaat7159 (2018)

DOI: 10.1126/sciadv.aat7159

This PDF file includes:

Fig. S1. Activity profiles of fishing vessels at sea.

Fig. S2. Reefers and fishing vessels involved in likely encounters between 2012 and 2017 worldwide by flag.

Fig. S3. Correlation between the number of rendezvous from 2012 to 2017 and IUU fishing by FAO region ($P = 0.1626$).

Fig. S4. Likely encounter between reefer flagged to Liberia (orange) and a Japanese longline fishing vessel (blue) off the west coast of Southern Africa.

Supplementary Materials

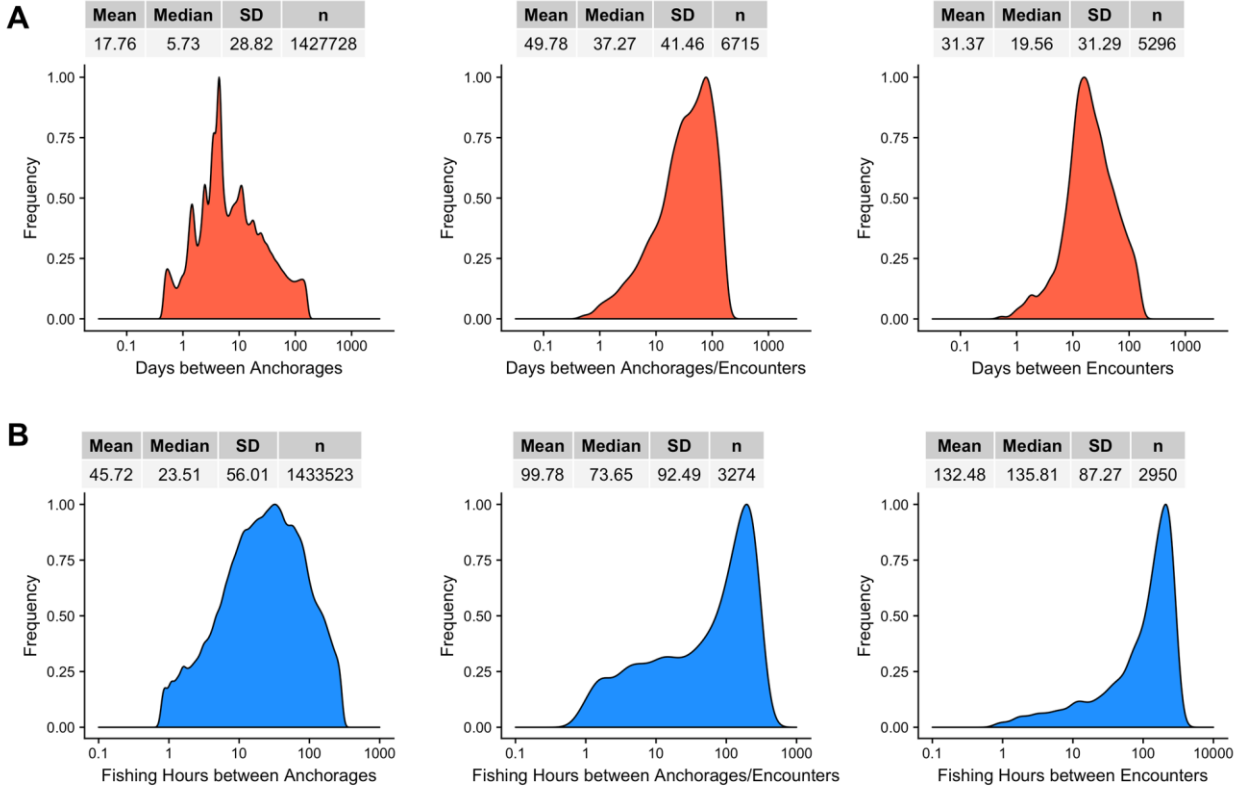


Fig. S1. Activity profiles of fishing vessels at sea. Frequency distribution of days at sea (**A**) and hours spent fishing (**B**) between two anchorages, anchorage and encounter, and between two encounters. Note that the upper and lower 5% of data have been excluded to avoid extreme outliers likely caused by missing AIS data.

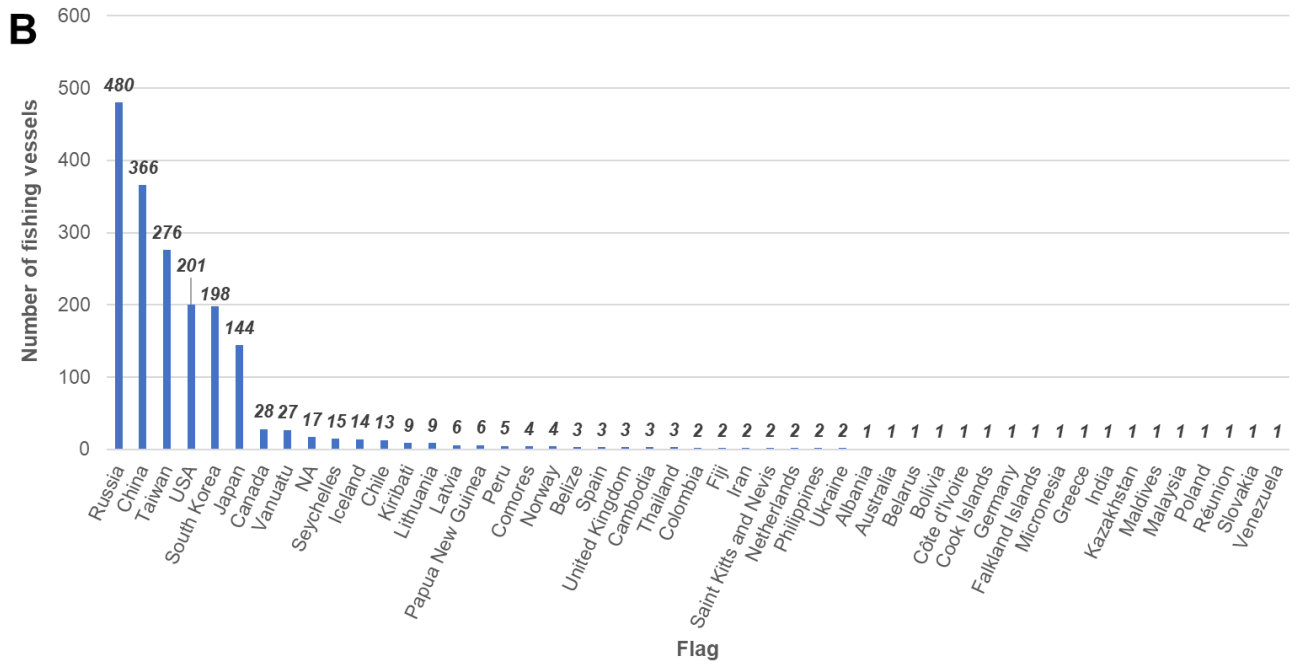
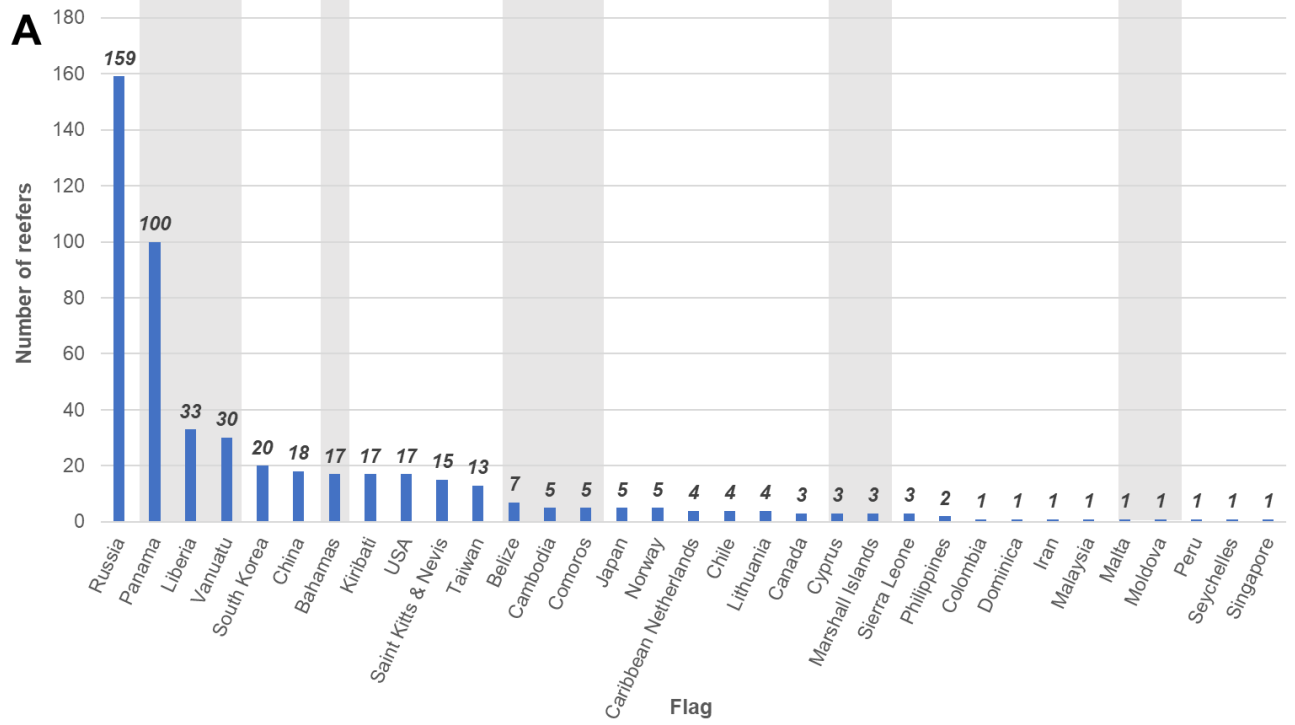


Fig. S2. Reefers and fishing vessels involved in likely encounters between 2012 and 2017 worldwide by flag.

Number of reefers (**A**) and fishing vessels (**B**) involved in likely encounters between 2012 and 2017 worldwide by flag. Flags of convenience for reefers marked in grey.

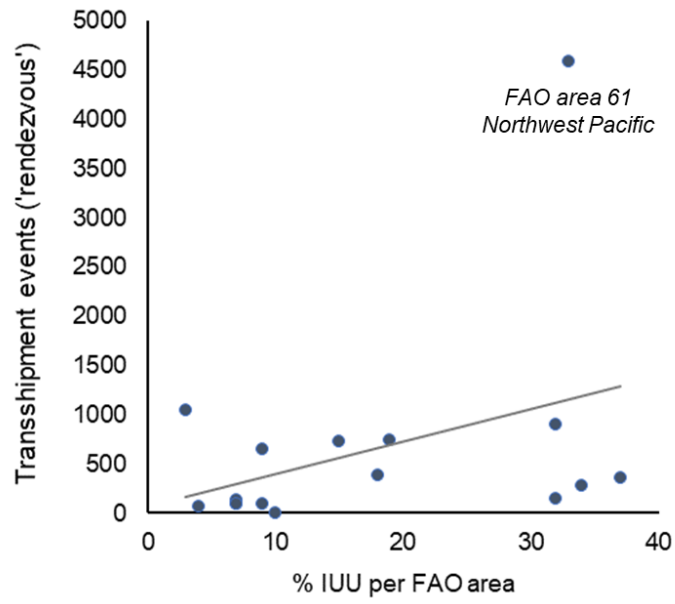


Fig. S3. Correlation between the number of rendezvous from 2012 to 2017 and IUU fishing by FAO region ($P = 0.1626$).

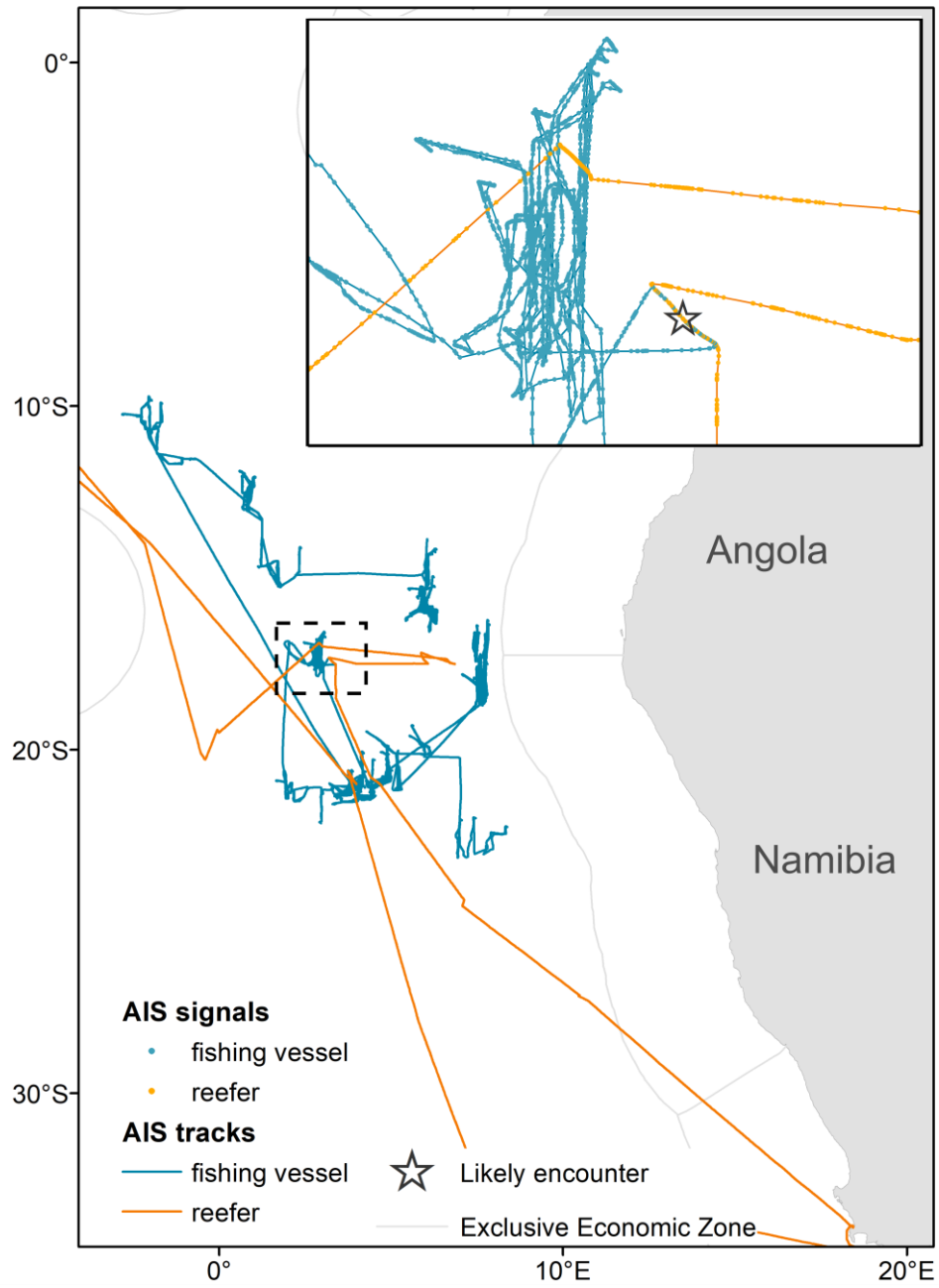


Fig. S4. Likely encounter between reefer flagged to Liberia (orange) and a Japanese longline fishing vessel (blue) off the west coast of Southern Africa. Insert (dashed line): close-up of likely encounter (star). Dots indicate AIS position messages.