

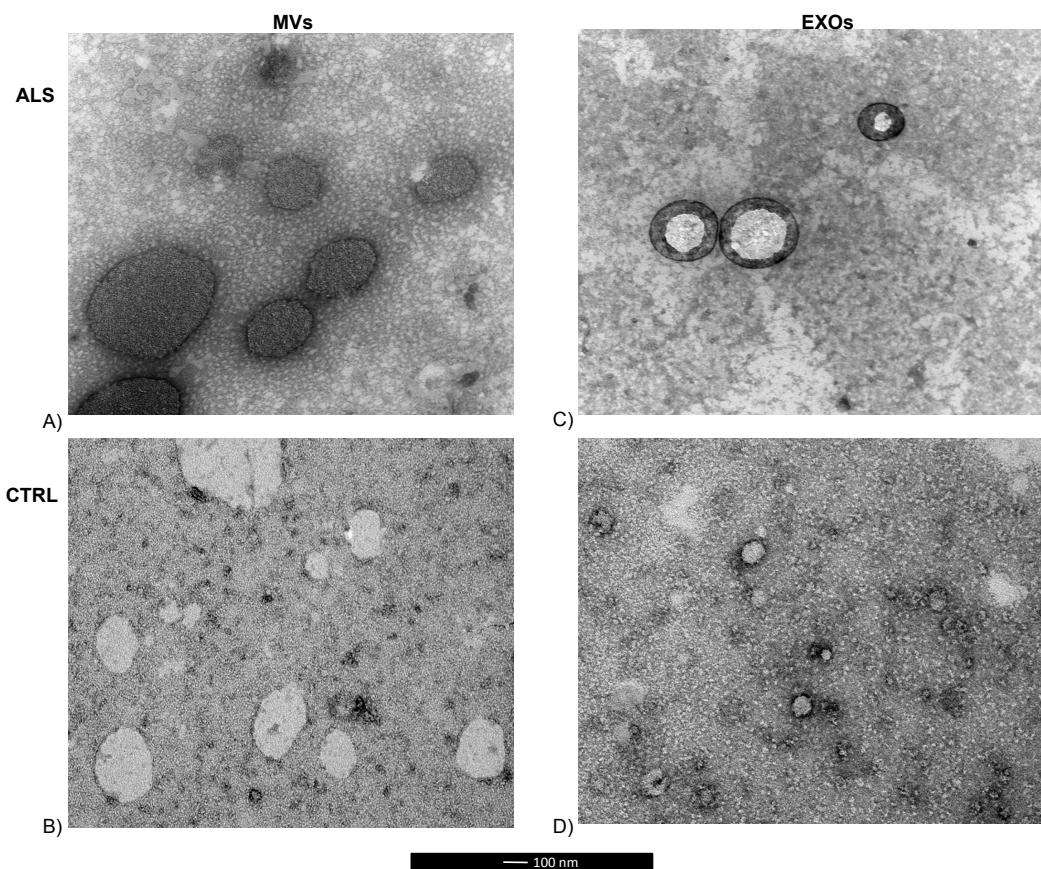
Supplementary Material

Pathological proteins are transported by extracellular vesicles of sporadic Amyotrophic Lateral Sclerosis patients

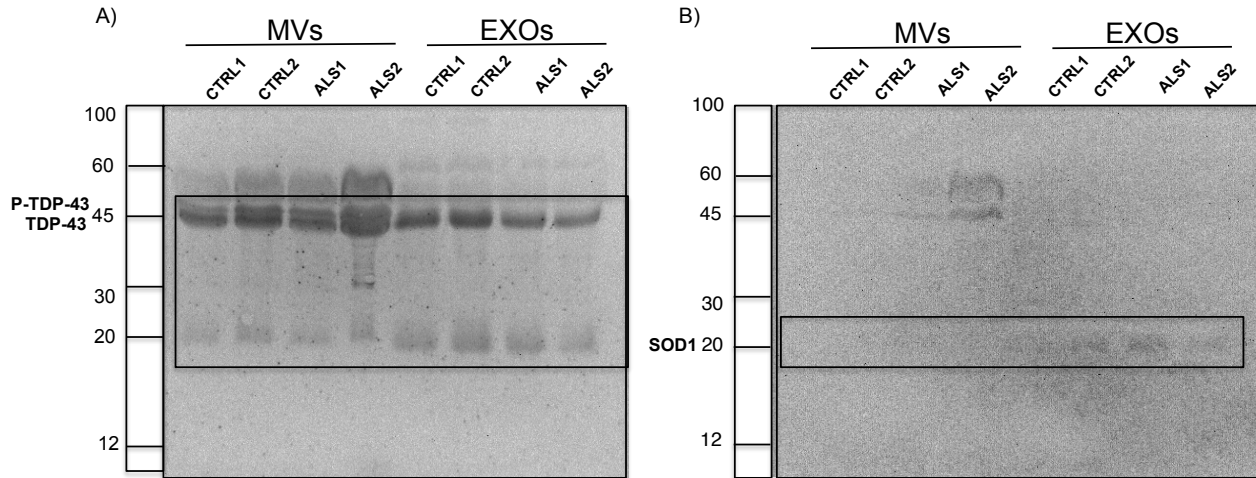
Daisy Sproviero¹, Sabrina La Salvia¹, Marta Giannini^{1,2}, Valeria Crippa³, Stella Gagliardi¹, Stefano Bernuzzi⁴, Luca Diamanti^{2,5}, Mauro Ceroni^{2,5}, Orietta Pansarasa¹, Angelo Poletti³, Cristina Cereda^{1*}.

* **Correspondence:** Dr. Cristina Cereda, e-mail: cristina.cereda@mondino.it

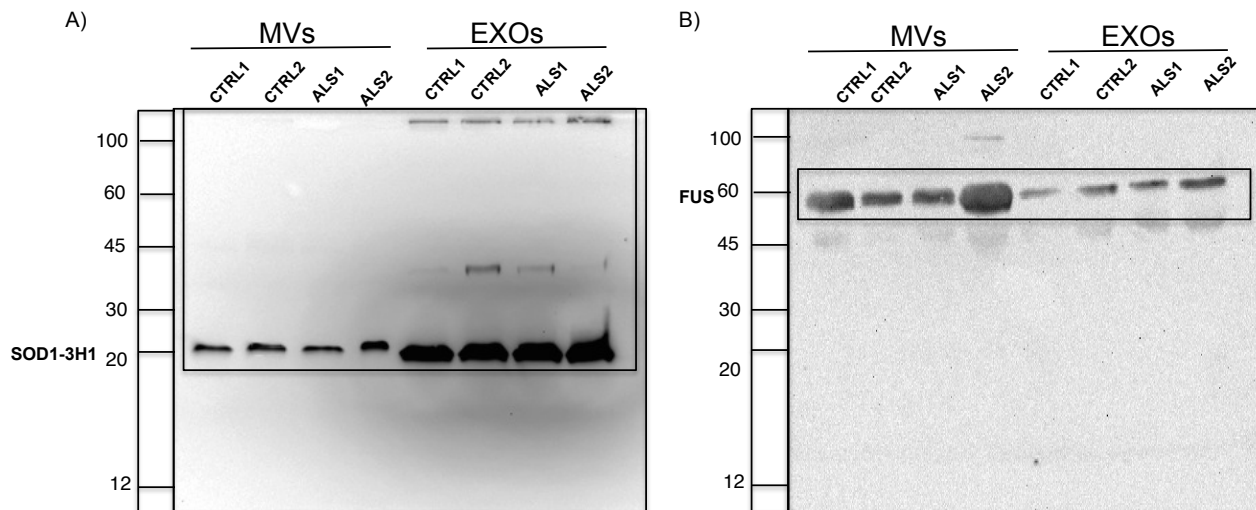
Supplementary Figure 1. Transmission electron microscopy (TEM) of MVs and EXOs of an ALS patient and a healthy control. Diameter of MVs and of EXOs from ALS patients were significantly higher than healthy donors (A and B for MVs; C and D for EXOs). Exosomes were negatively stained with 2% uracyl acetate.



Supplementary Figure 2. Immunoblots of MVs and EXOs (30 μ g protein) from plasma of two healthy donors (CTRL1 and CTRL2-MVs-lane 1, 2; CTRL1 and CTRL2-EXOs-lane 5, 6) and two ALS patients (ALS1 and ALS2-MVs-lane 3, 4; ALS1 and ALS2-EXOs-lane 7, 8) with anti-TDP-43 and p-TDP-43 (A) and anti-SOD1(B). Black squares show the cropping locations.



Supplementary Figure 3. Immunoblots of MVs and EXOs (30 μ g protein) from plasma of two healthy donors (CTRL1 and CTRL2-MVs-lane 1, 2; CTRL1 and CTRL2-EXOs-lane 5, 6) and two ALS patients (ALS1 and ALS2-MVs-lane 3, 4; ALS1 and ALS2-EXOs-lane 7, 8) with anti-SOD1-3H1 (A) and anti-FUS (B). Black squares show the cropping locations.



Supplementary Figure 4. Immunoblots of MVs and EXOs (30 μ g protein) from plasma of two healthy donors (CTRL1 and CTRL2-MVs-lane 1, 2; CTRL1 and CTRL2-EXOs-lane 5, 6) and two ALS patients (ALS1 and ALS2-MVs-lane 3, 4; ALS1 and ALS2-EXOs-lane 7, 8) with anti-Annexin V (A) and anti-Alix (B). Black squares show the cropping locations.

