

Supplementary Material

Supplementary Figure 1. VEGF-A signaling in *Ptpn1*^{ECKO} cells

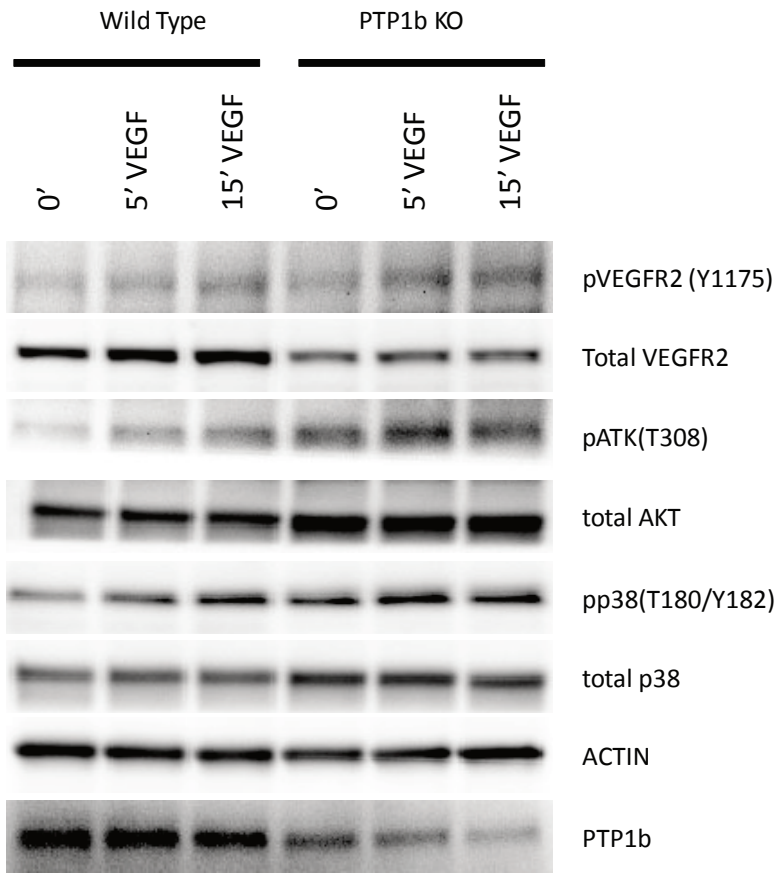
(A) *VEGF-A signaling in wildtype and PTP1b KO EC.* Western blotting of total cell lysates isolated from floxed PTP1b cells treated with control CMV adenovirus or CRE adenovirus for three days and then starved overnight. Confluent, serum-starved cells were stimulated for the times indicated with 50ng/ml of VEGF-A. (B) Total VEGFR2 and AKT are increased in PTP1b^{ECKO} cells relative to WT following VEGFA treatment (n=9, Mean +/- SEM). (C) Quantification of pVEGFR2Y1175, p-AKT308 and p-p38 normalized to the total protein corresponding (n=3, Mean +/- SEM). Statistical significance was assessed using a Mann-Whitney U-tests.

Supplementary Figure 2. *PTP1b* expression in endothelial cells isolated from WT and *Cdh5* CRE X *Ptpn1*^{fl/fl} mice treated with tamoxifen.

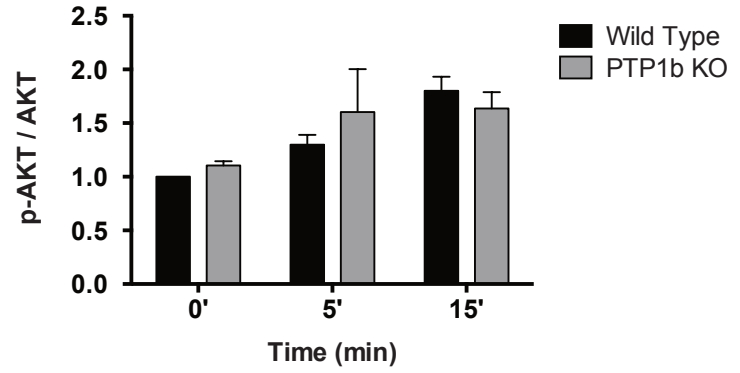
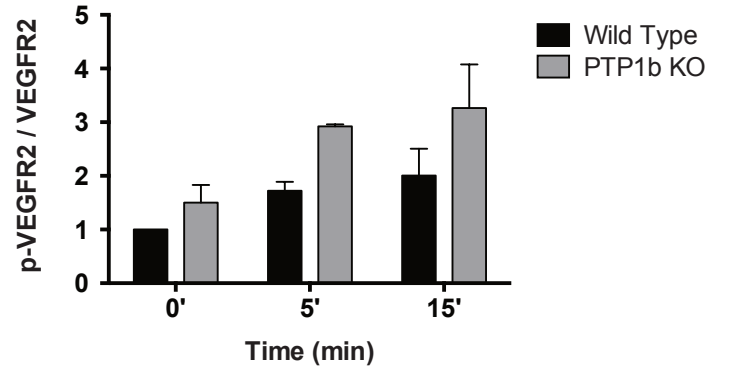
Western blotting of total cell lysates from endothelial cells (heart, lung, artery and vein) isolated from WT and floxed PTP1b (tamoxifen treated) mice. P0- primary freshly isolated endothelial cells, P1- first passage endothelial cells. Note the decrease in PTP1b expression in cells isolated from floxed PTP1b tamoxifen treated mice relative to wildtype.

Supplemental Figure 1

A



C



B

