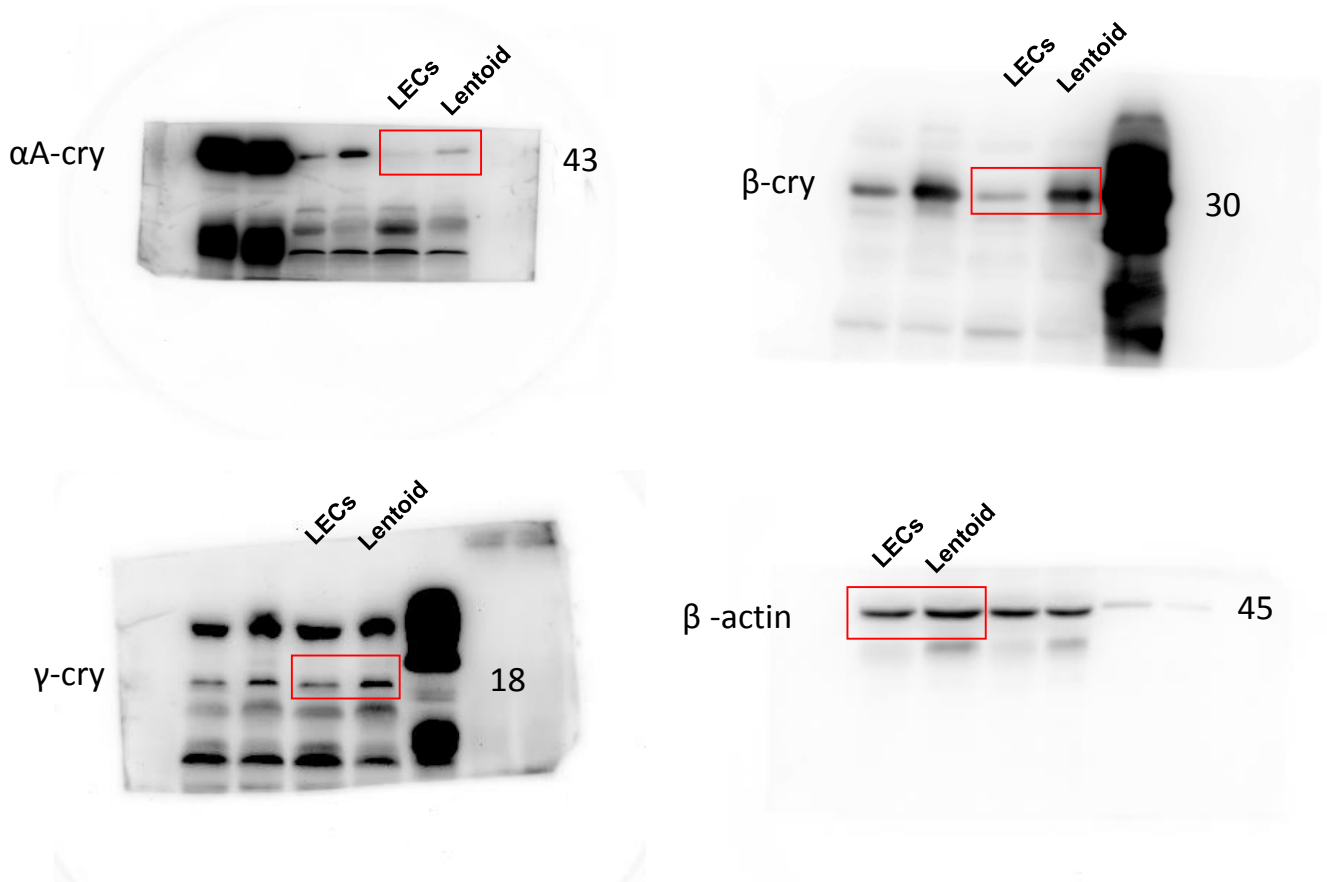


Supplementary Figure 1. Gel Source Data



Supplementary Data Table 1. Primers Used for Real-Time PCR

Gene (Human)	Forward primer	Reverse primer
<i>c-Maf</i>	GCCCAACCTGGTGGCTGTGTGCCT	AGACACCAGGTCCGGGCTGGGGTGC
<i>CP49</i>	GCTTGGAGCAAGGCTCCTGCTT	ACGTGAAGGTGCTGTACACAC
<i>E-cadherin</i>	GACTTCGAGGCGAAGCAGCAGT	ATCTTCTGCTGCATGAATGTGTC
<i>filensin</i>	GACCCTGGAACAAGCTAT	ATCCGATGGTACCGGTCCAGC
<i>GAPDH</i>	GCGAGATCCCGCCAACATCAAGT	AGGATGCGTTGCTGACAATC
<i>Pax6</i>	GTATTCTTGCTTCAGGTAGAT	GAGGCTCAAATGCGACTTCAGCT
<i>Bmi1</i>	GGTACTTCATTGATGCCACAACC	CTGGTCTTGTGAACTTGGACATC
<i>Sox2</i>	GAACGCCTTCATGGTGTGGT	AGCGTCTTGGTTTTCCGC
<i>βB2-crystallin</i>	GCGAGTACCCTCGCTGGGACT	ACGACACCTTCTCCTGGTAGC
Gene (Mouse)	Forward primer	Reverse primer
<i>Bmi1</i>	ACTACACGCTAATGGACATTGCC	CTCTCCAGCATTTCGTCAGTCCA
<i>GAPDH</i>	CATCACTGCCACCCAGAAGACTG	ATGCCAGTGAGCTTCCCGTTCAG
<i>PAX6</i>	CTGAGGAACCAGAGAAGACAGG	CATGGAACCTGATGTGAAGGAGG
<i>SOX2</i>	AACGGCAGCTACAGCATGATGC	CGAGCTGGTCATGGAGTTGTAC
<i>Ki67</i>	ATCATTGACCGCTCCTTTAGGT	GCTCGCCTTGATGGTTCCT