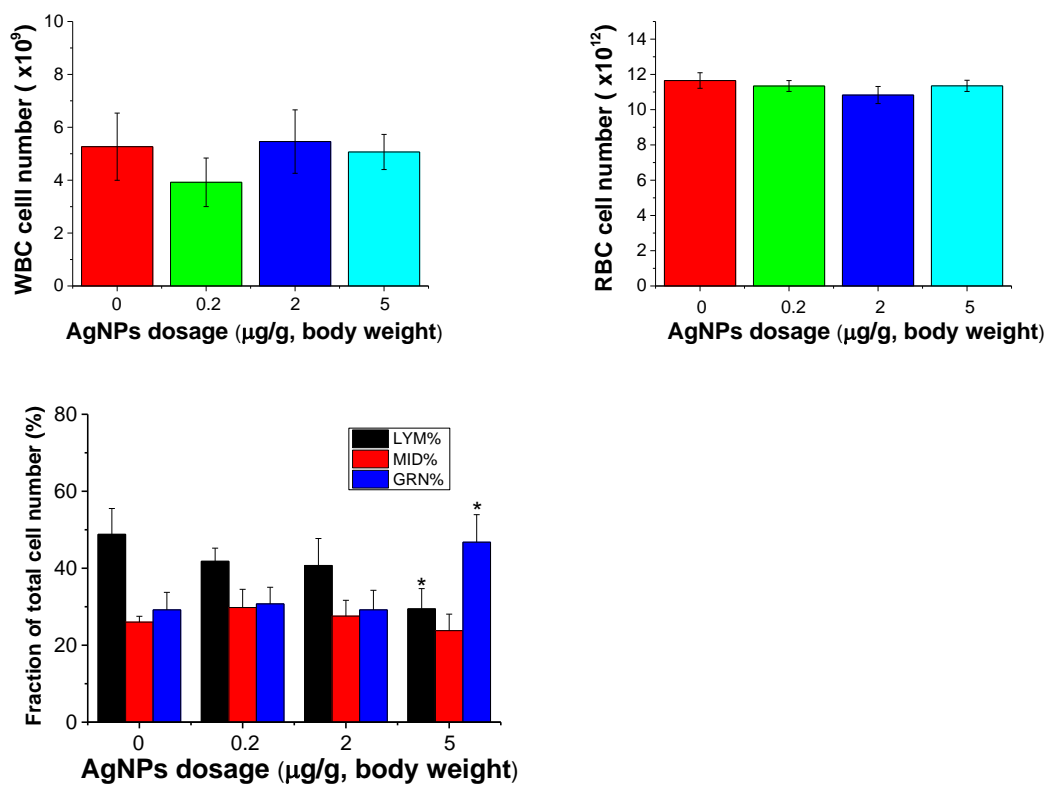


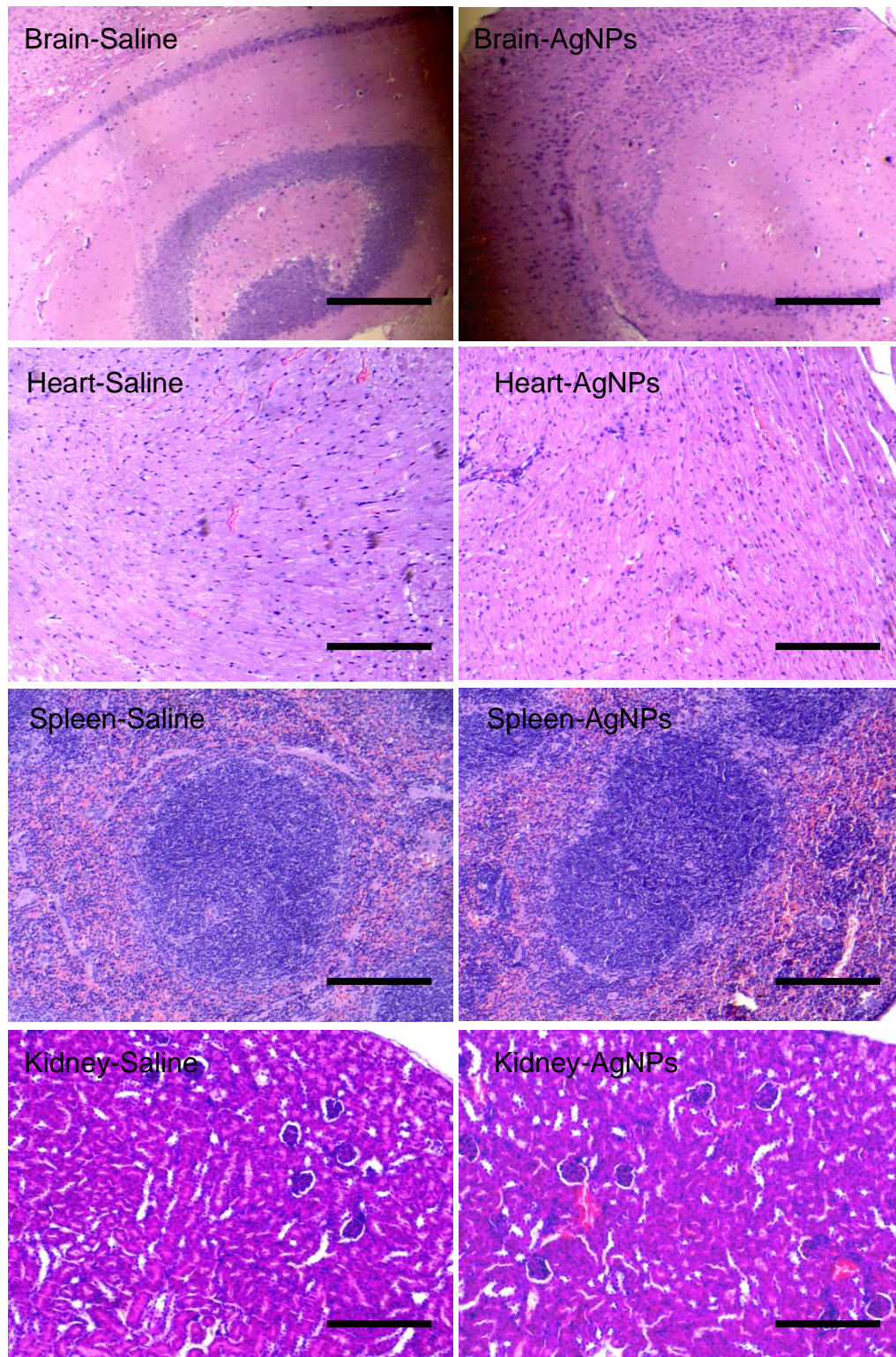
Supplemental Table 1 Primers used for qPCR.

Genes	Forward primer	Reverse primer
<i>xbp-1s</i>	5'-TGCTGAGTCCGCAGCAGGTG3'	5'-GACTAGCAGACTCTGGGGAAGG3'
<i>chop</i>	5'-CATACACCACCACACCTGAAAG-3'	5'-CCGTTTCCTAGTTCTTCCTTGC-3'
<i>Gpx</i>	5'-CTCACCCGCTCTTTACCTTCCT-3'	5'-ACACCGGAGACCAAATGATGTACT-3'
<i>SOD1</i>	5'-GCGGTGAACCAGTTGTGTTGTC-3'	5'-CAGTCACATTGCCCAGGTCTCC-3'
<i>HO1</i>	5'-ACTTTCAGAAGGGTCAGGTGTCC-3'	5'-TTGAGCAGGAAGGCGGTCTTAG-3'
<i>IL-6</i>	5'-GAACAACGATGATGCACTTGCAG-3'	5'-CCTTAGCCACTCCTTCTGTGAC-3'
<i>TNF-α</i>	5'-ACGTGGAAGTGGCAGAAGAG-3'	5'-CTCCTCCACTTGGTGGTTTG-3'
<i>Gapdh</i>	5'-GACTTCAACAGCAACTCCCAC-3'	5'-TCCACCACCCTGTTGCTGTA-3'

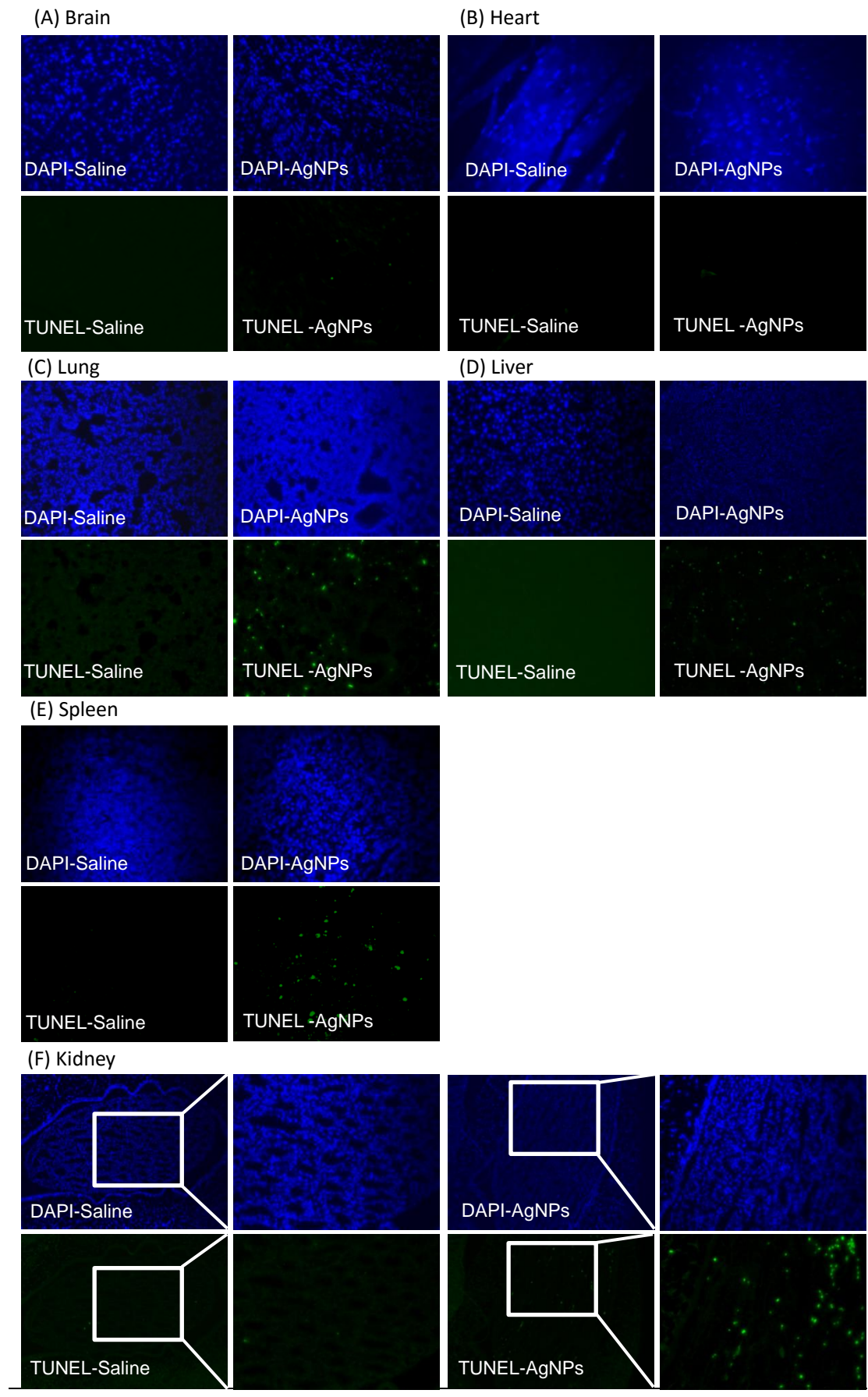


Supplemental Fig. 1 Hematological parameters in the blood of mice after exposure to one single injection of AgNPs at 0.2 (L, Low), 2 (M, Middle) and 5 (H, High) µg/g dosages for 8 h.

(A) The total number of white blood cells (WBC); (B) The total number of red blood cells (RBC); (C) The percentages of lymphocytes (LYM), precursor white cells (MID, minimum inhibitory dilution) and granulocytes (GRN) of the total cell counts.



Supplemental Fig. 2. Histopathological images of tissues after intravenous exposure to AgNPs at 5 µg/g for 8 h in mice. Scale bar = 200 µm.



Supplemental Fig. 3 Representative images of TUNEL assay from different organs after intravenous exposure to AgNPs at 5 $\mu\text{g/g}$ for 8 h in mice. Magnification of pictures is 20 \times , except 50 \times for amplified frames in kidney tissue.