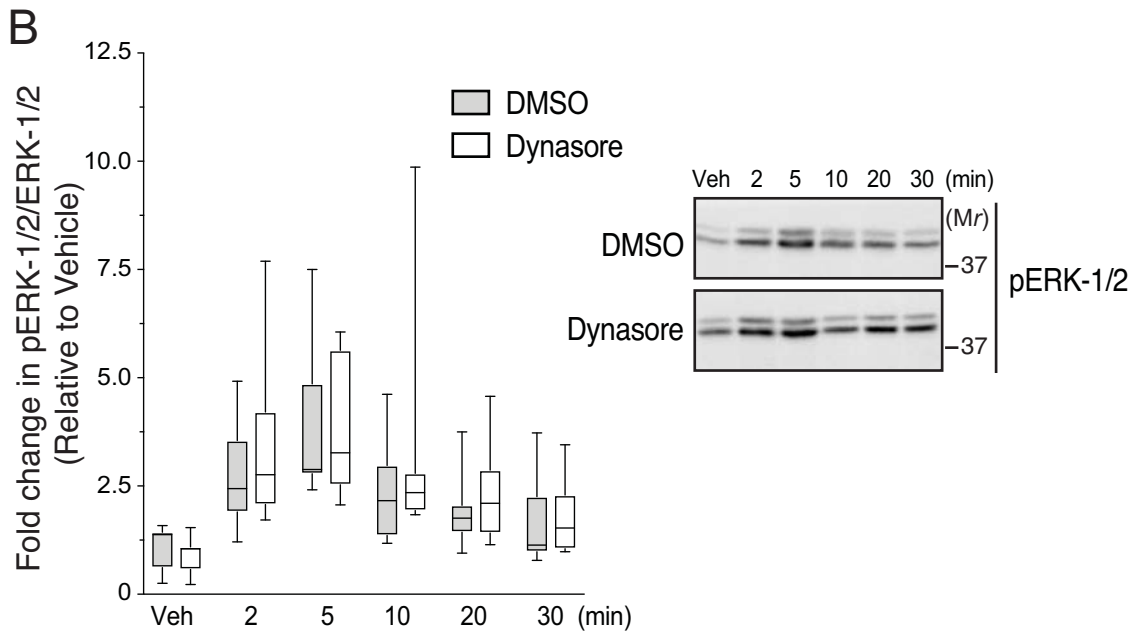
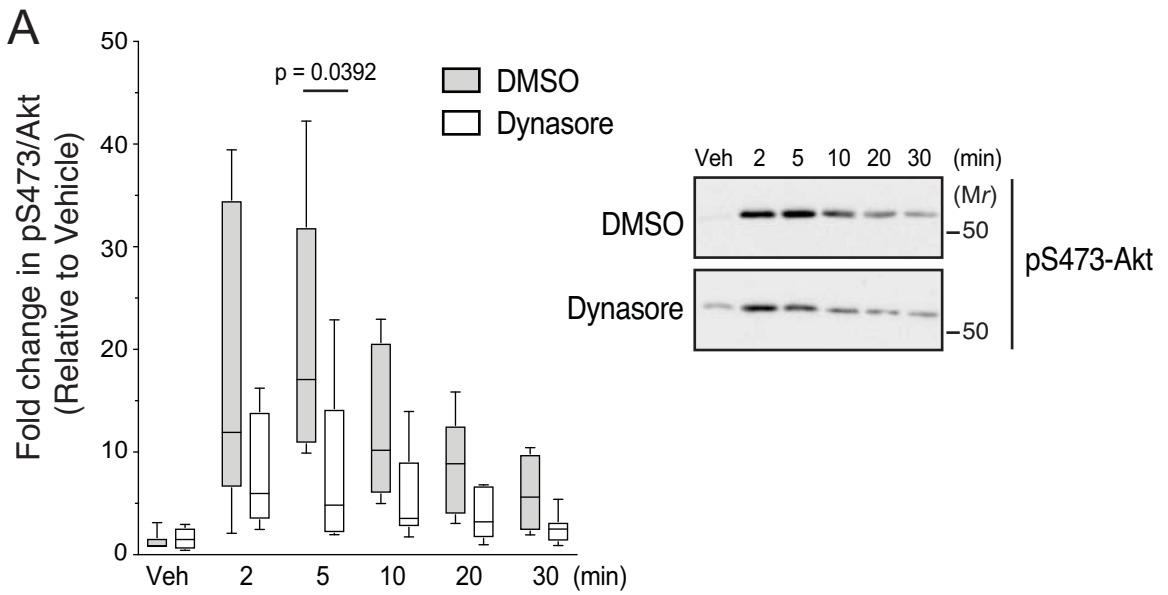


Supporting Figure 1.



Supporting Figure 1.

A-B, Time course of Akt (A) and ERK-1/2 (B) activation mediated by CXCR4. HeLa cells were pretreated with 80 μ M dynasore or DMSO for 30 min followed by treatment with vehicle or 10 nM CXCL12 for the indicated times. Equal amounts of whole cell lysates were immunoblotted for pAkt-S473 and total Akt (A) or pERK-1/2 and total ERK-1/2 (B). Immunoblots from seven independent experiments were analyzed by densitometry and pAkt-S473 or pERK-1/2 values were normalized to total Akt or ERK-1/2 values, respectively. Data are represented as a fraction of the vehicle from the DMSO or dynasore treated cells and are represented in a box plot. The upper limit of the box represents the 75th percentile and the lower limit represents the 25th percentile. The horizontal line within the box represents the median. The whiskers represent the maxima and minima values. Data were analyzed by two-way ANOVA, followed Tukey's multiple comparisons test. P value is indicated in A.