

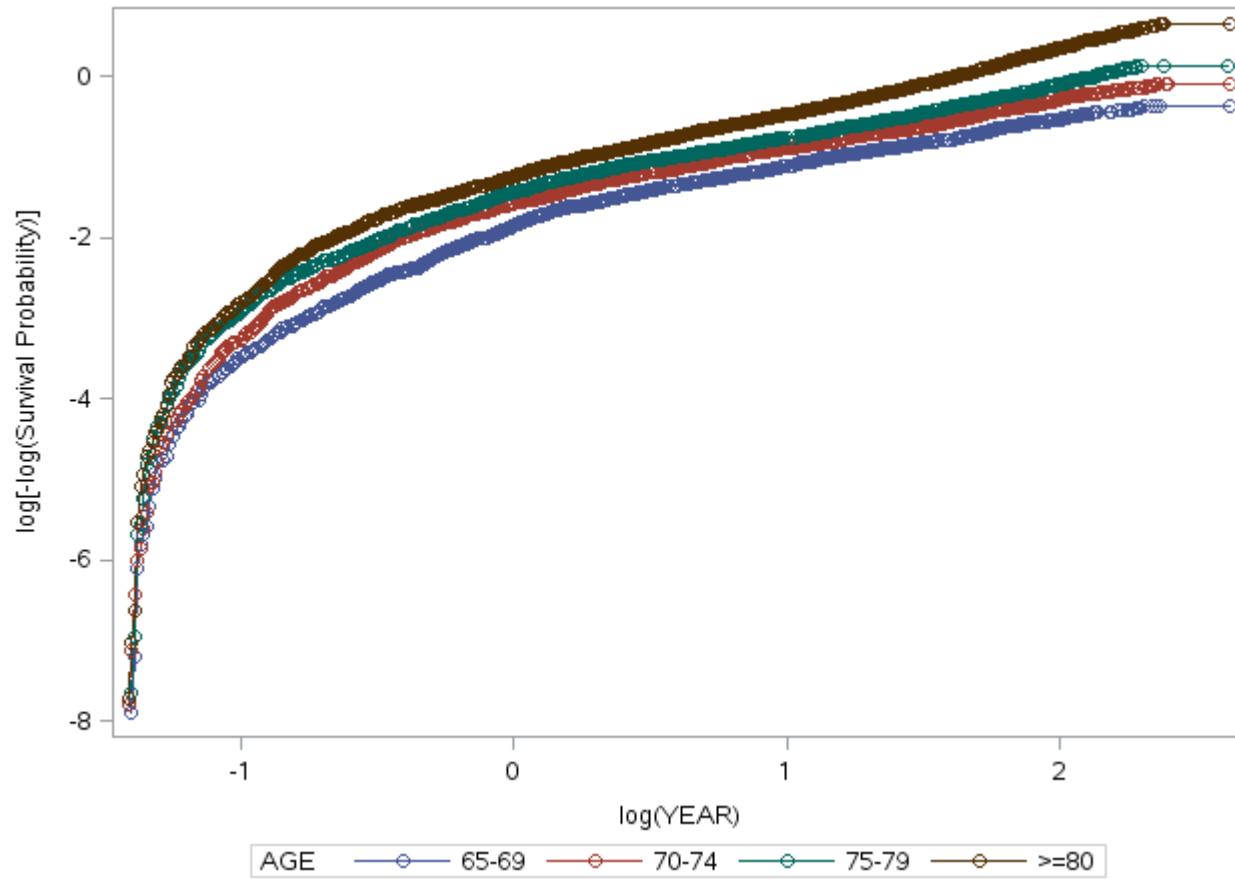
Supplementary Materials

Legends

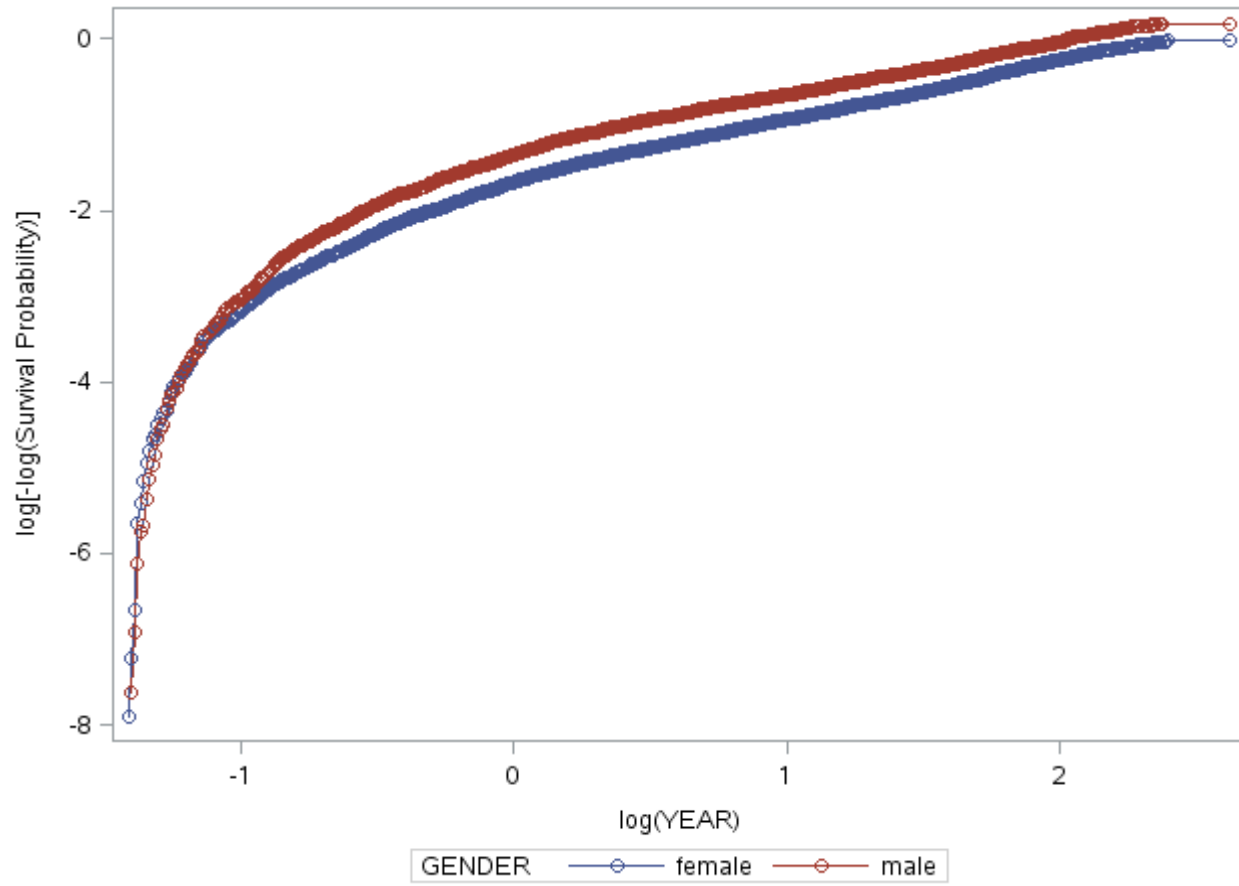
Supplementary Figure 1. Proportional Hazard Assumption Verification for Cox Regression. Plots of log of the cumulative hazards function versus log of survival time to ensure that the proportional hazards assumption was satisfied. The variables included a) age, b) gender, c) race, d) region, e) stage, f) radiotherapy, g) chemotherapy, h) surgical resection, i) urban/rural status, j) carcinoid syndrome, k) octreotide, l) primary site, and m) grade.

Supplementary Figure 2. Overall Survival in Metastatic Grade 1-2 NETs of Other Primary Sites. Overall survival in relation to the presence or absence of carcinoid syndrome in grade 1-2 NET of the a) cecum, b) colon or rectum, and c) lung, bronchus, and other respiratory organs.

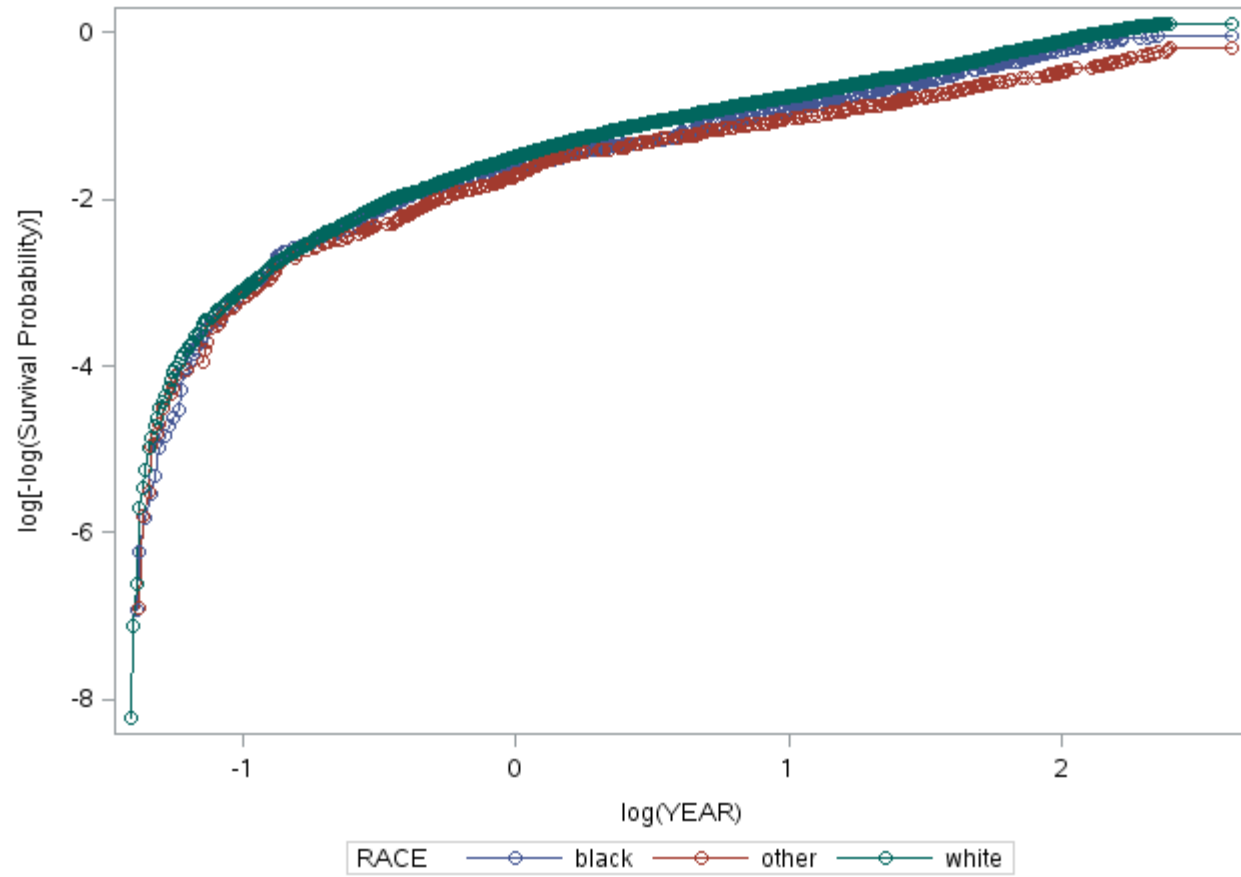
Supplementary Figure 1. Proportional Hazard Assumption Verification for Cox Regression
a. Age



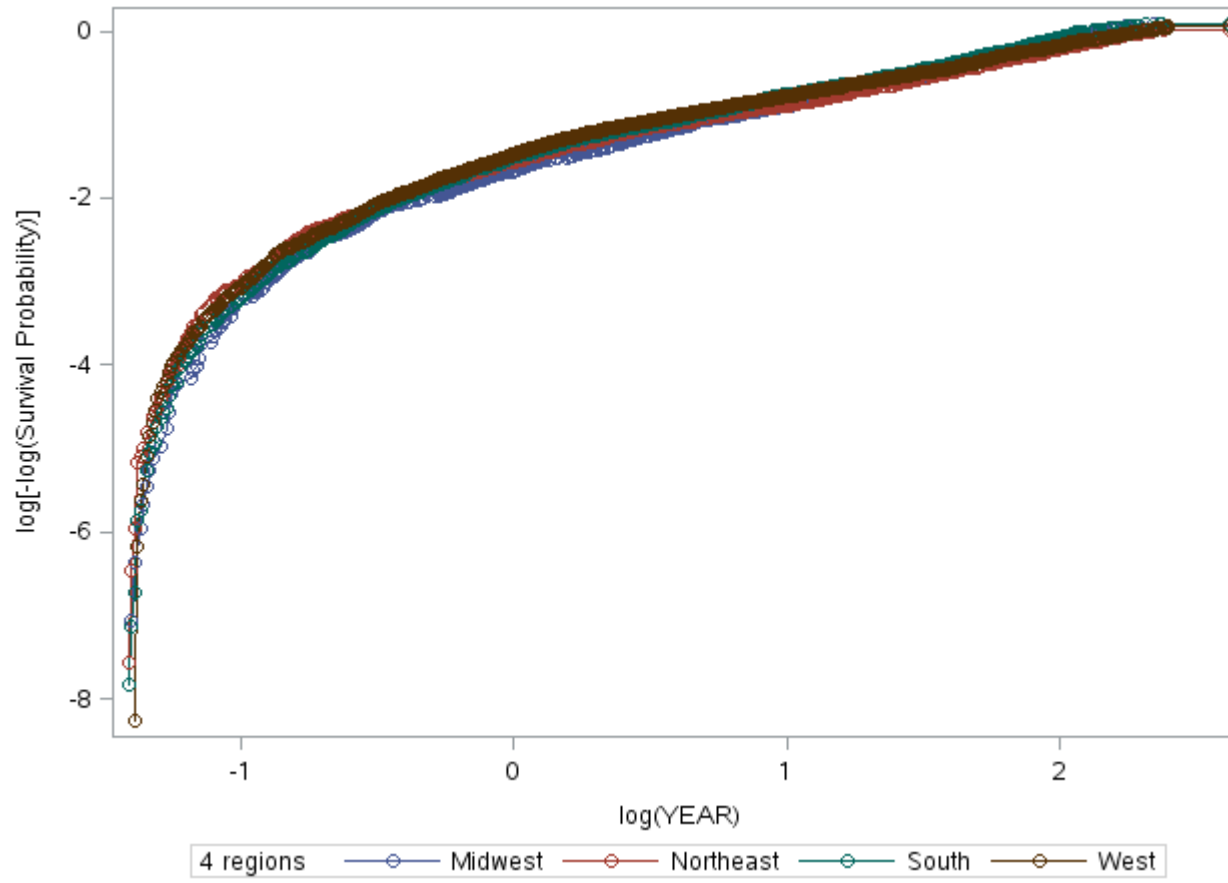
b. Gender



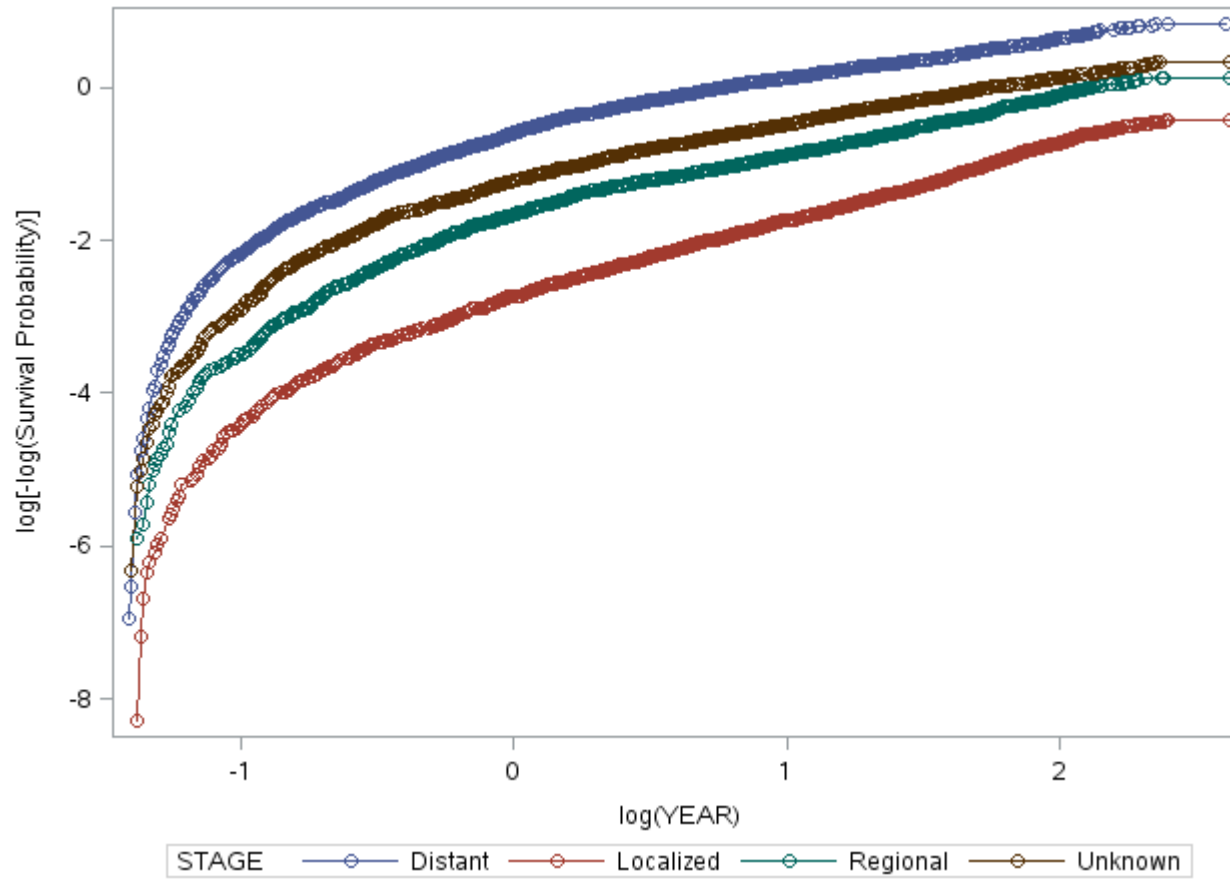
c. Race



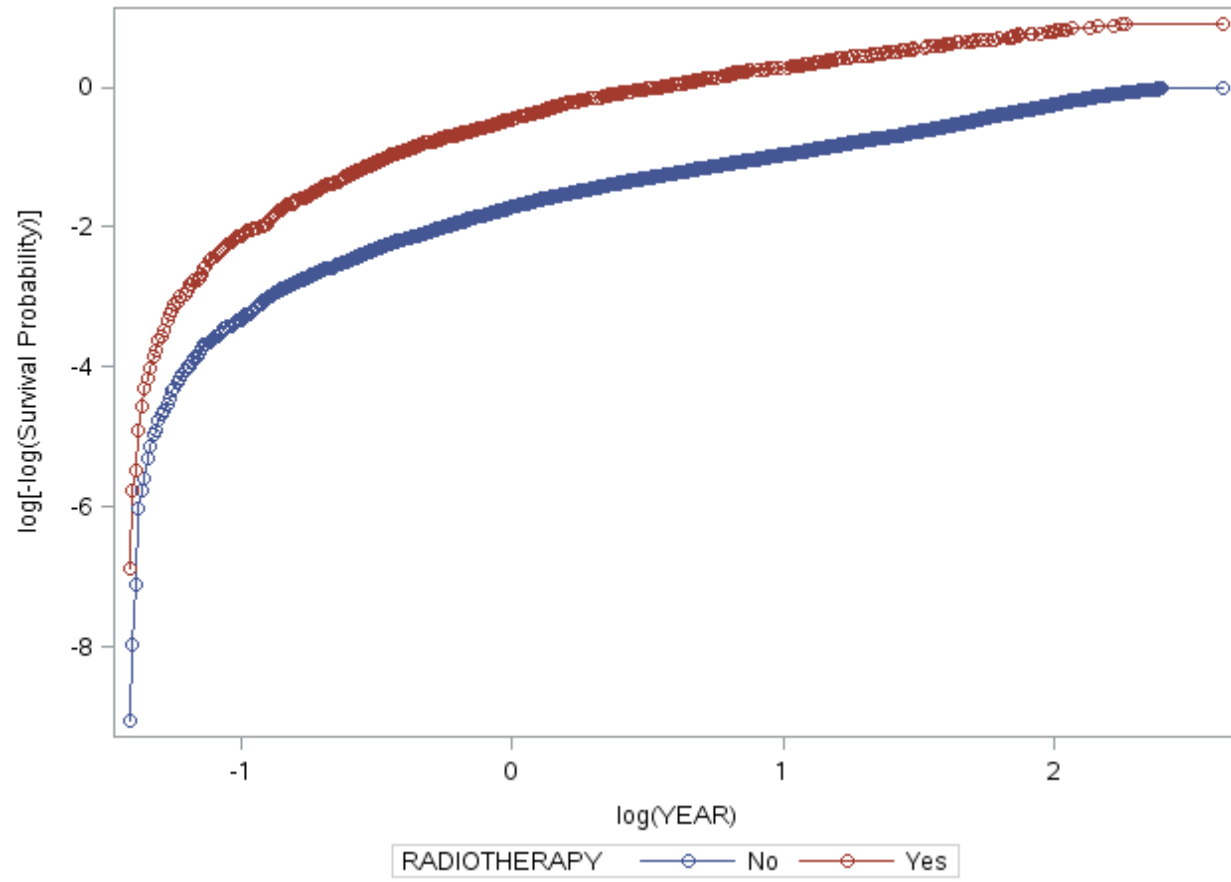
d. Region



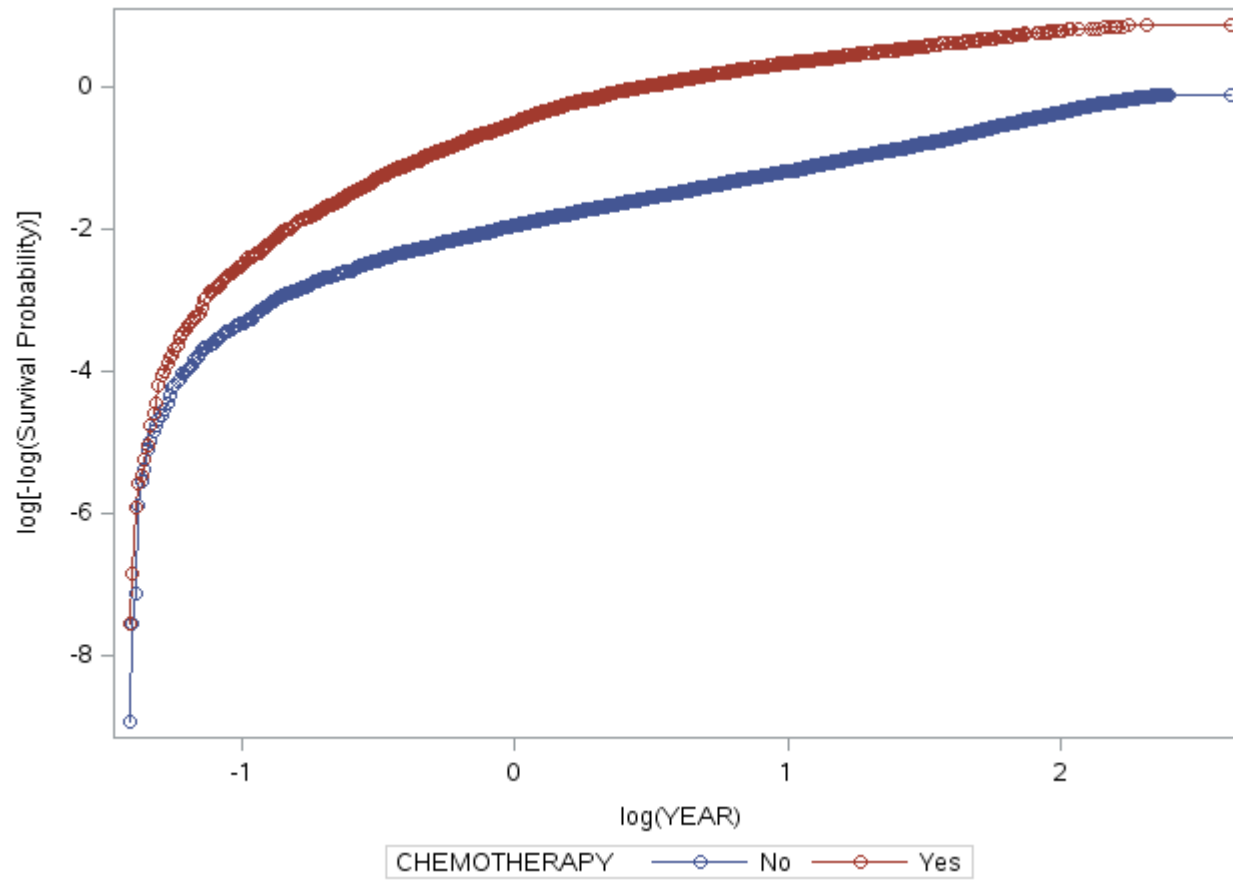
e. Stage



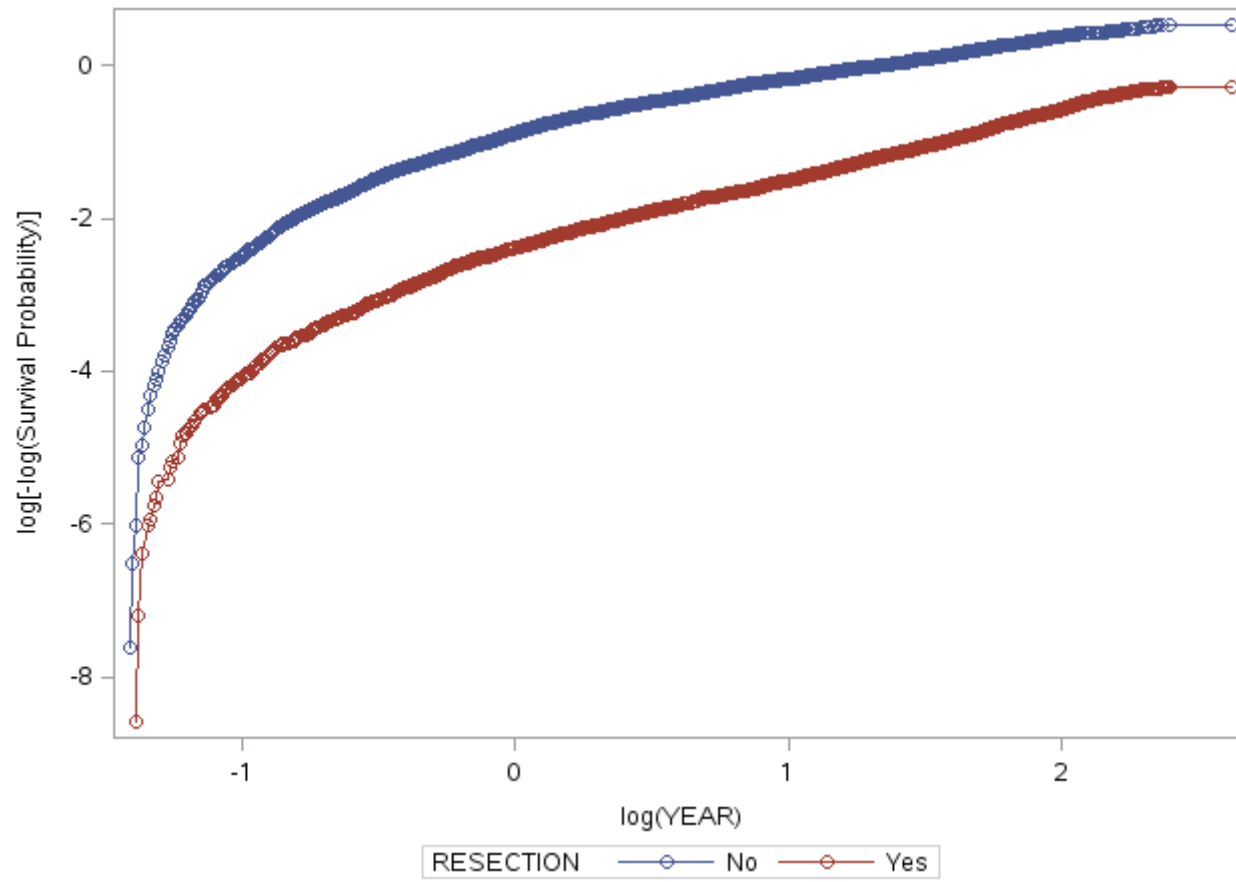
f. Radiotherapy



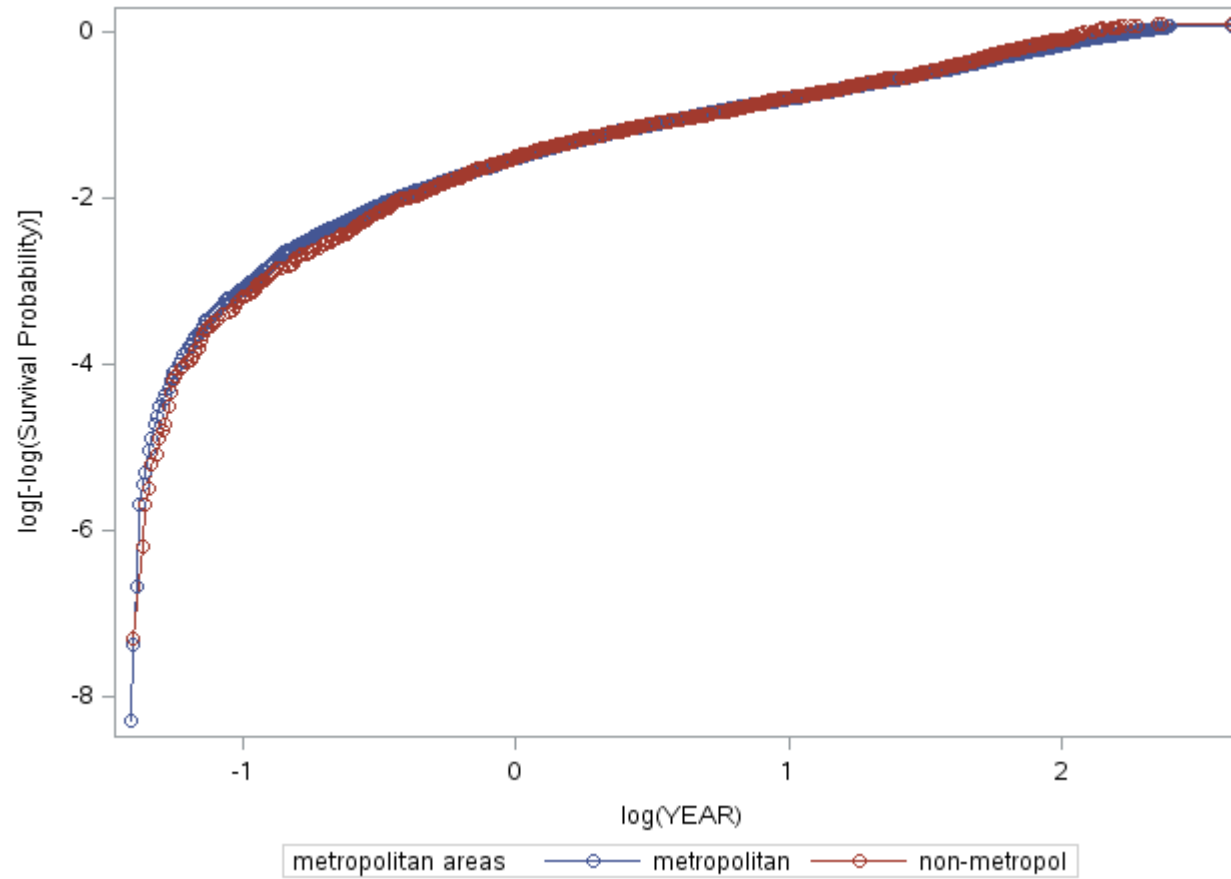
g. Chemotherapy



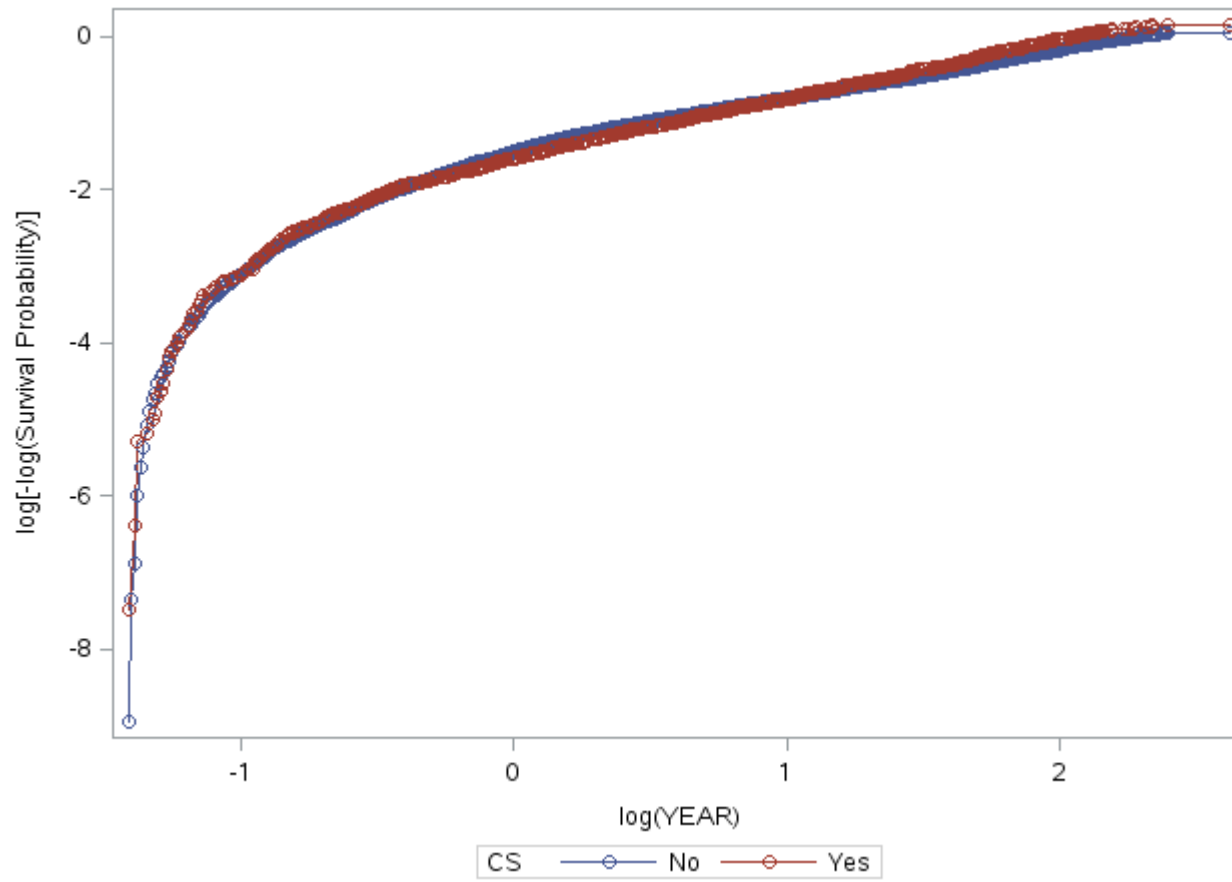
h. Surgical Resection



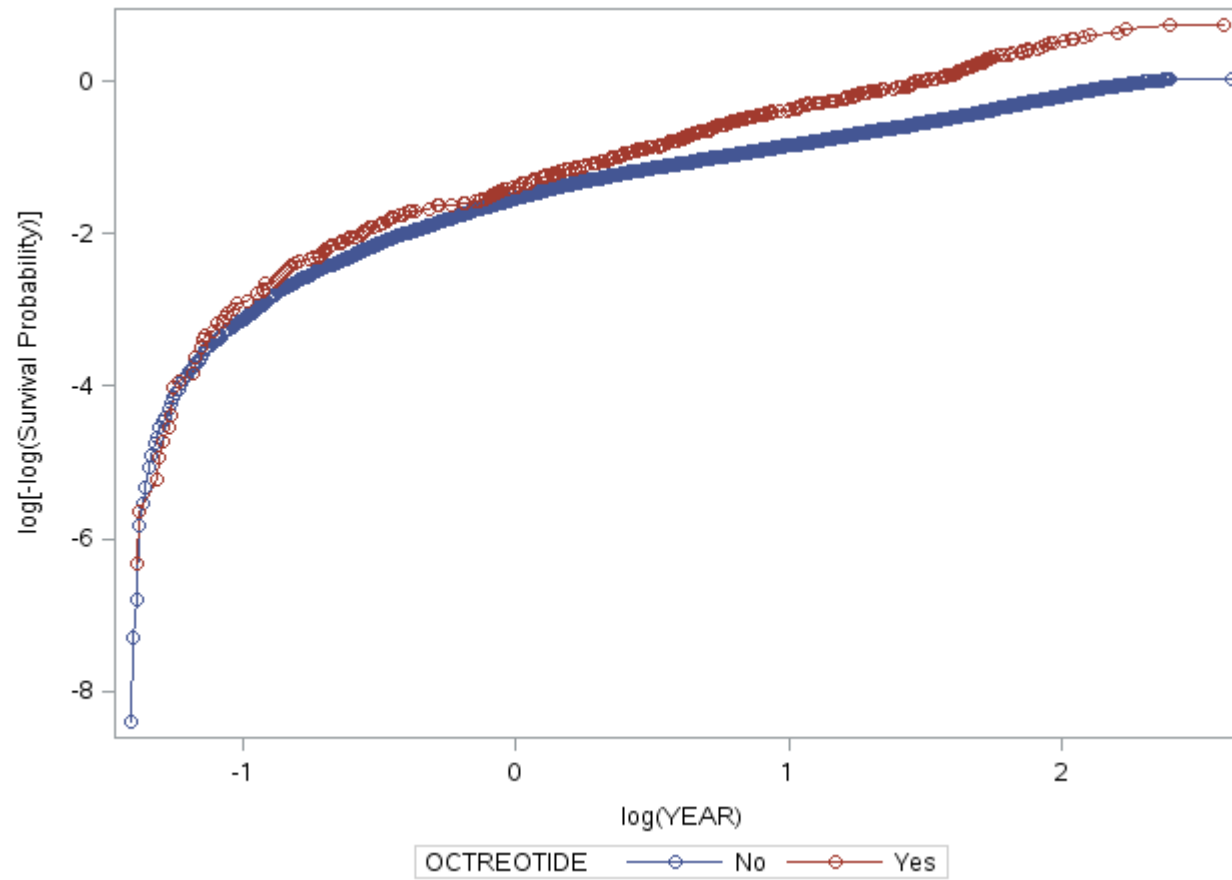
i. Urban/Rural Status



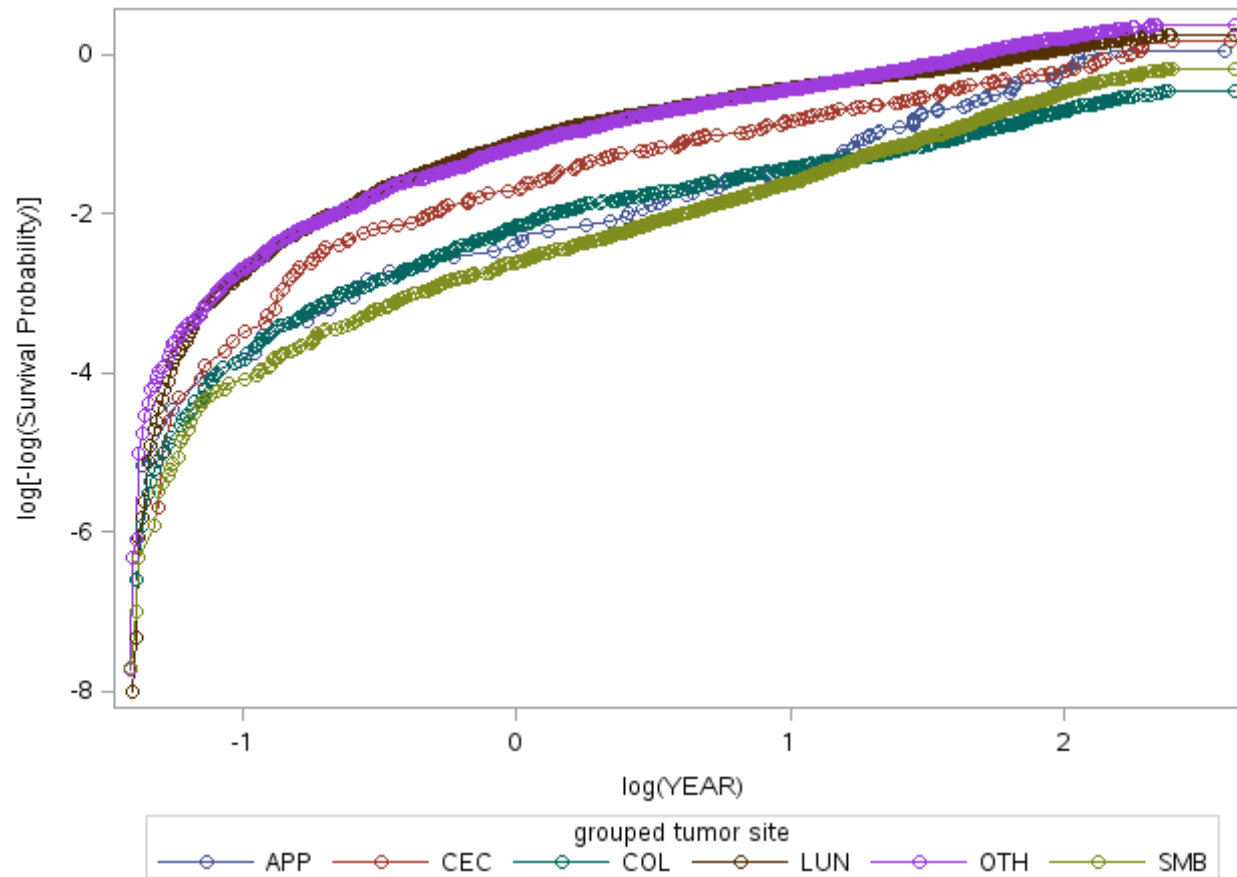
j. Carcinoid Syndrome



k. Octreotide

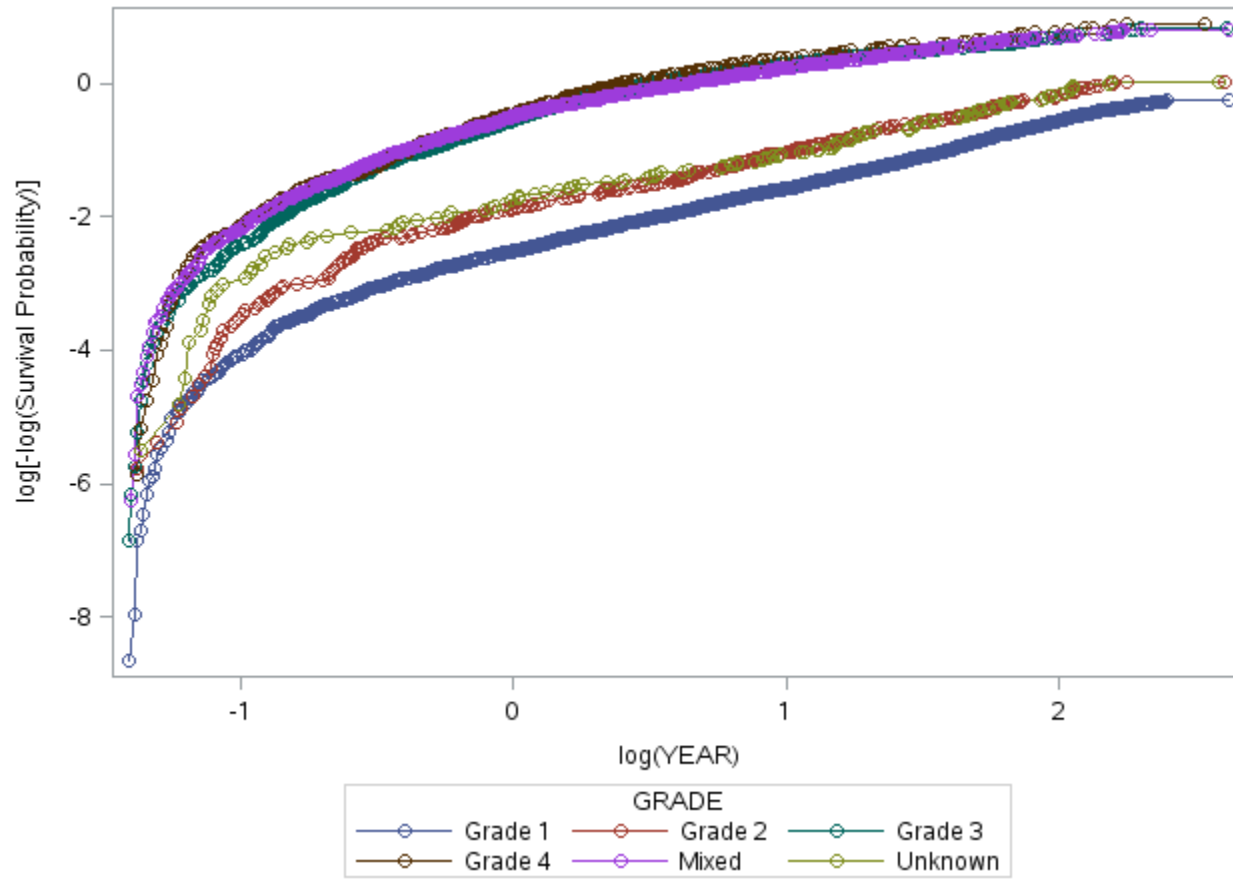


I. Site



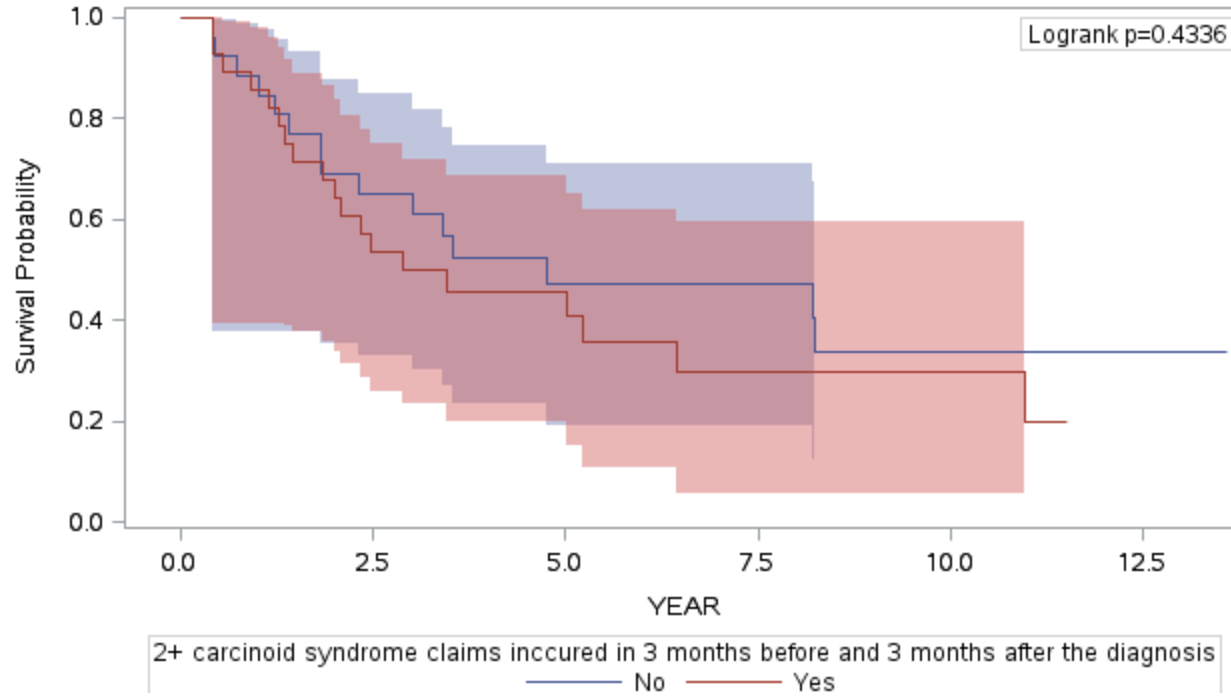
c. Proportional hazards assumption check for variable *Site*.

m. Grade



Supplementary Figure 2. Overall Survival in Metastatic Grade 1-2 NETs of Other Primary Sites

a. Cecum

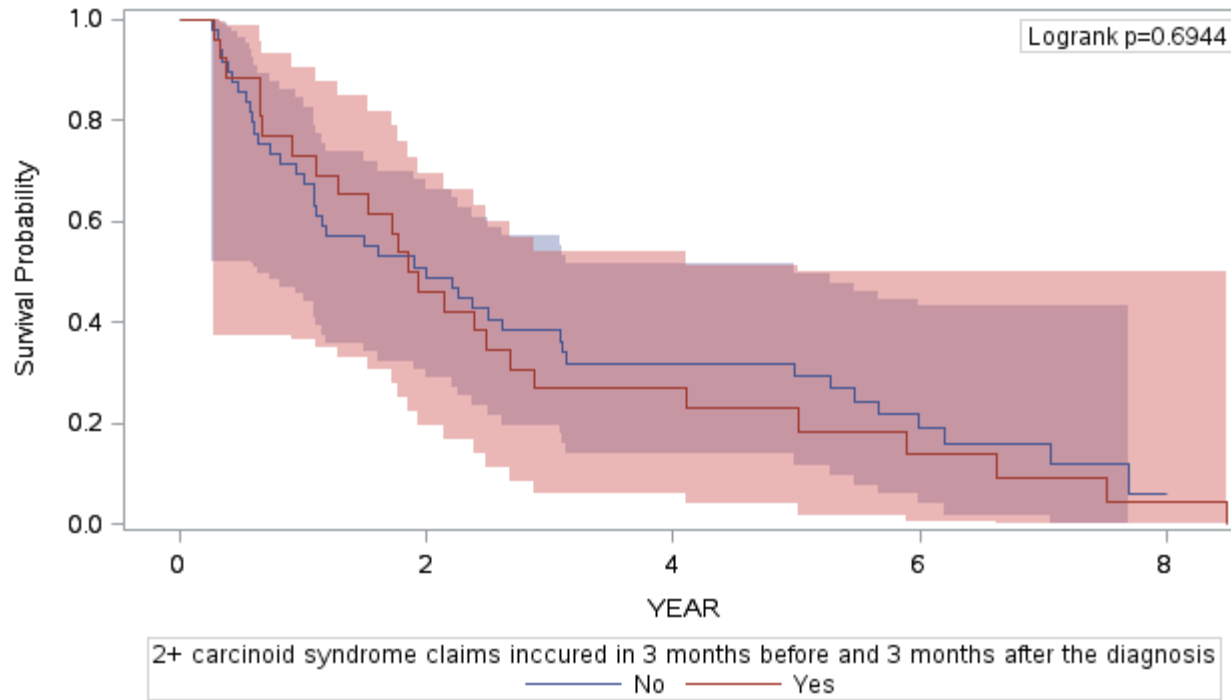


Number at risk (Number censored)

	0	2.5	5.0	7.5	10.0	12.5
No	26 (Masked*)	16 (Masked*)	(Masked*)	(Masked*)	(Masked*)	(Masked*)
Yes	28 (Masked*)	15 (Masked*)	(Masked*)	(Masked*)	(Masked*)	(Masked*)

* Masked per Surveillance, Epidemiology, and End Results-Medicare user agreement for confidentiality.

b. Colon or Rectum

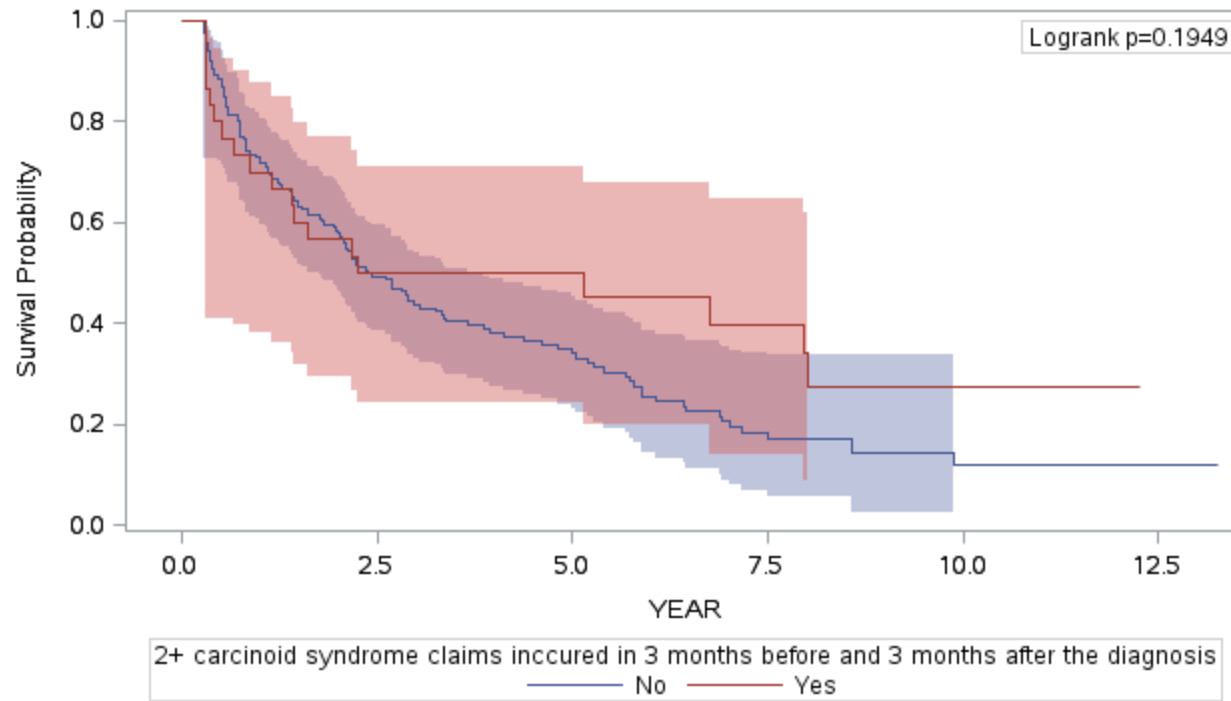


Number at risk (Number censored)

No	49 (Masked*)	24 (Masked*)	13 (Masked*)	Masked* (Masked*)	Masked* (Masked*)
Yes	26 (Masked*)	12 (Masked*)	Masked* (Masked*)	Masked* (Masked*)	Masked* (Masked*)

* Masked per Surveillance, Epidemiology, and End Results-Medicare user agreement for confidentiality.

c. Lung, Bronchus, and Other Respiratory Organs



Number at risk (Number censored)

No	166 (Masked*)	81 (Masked*)	40 (20)	13 (Masked*)	Masked* (Masked*)	Masked* (40)
Yes	30 (Masked*)	15 (Masked*)	Masked* (Masked*)	Masked* (Masked*)	Masked* (Masked*)	Masked* (Masked*)

* Masked per Surveillance, Epidemiology, and End Results-Medicare user agreement for confidentiality.