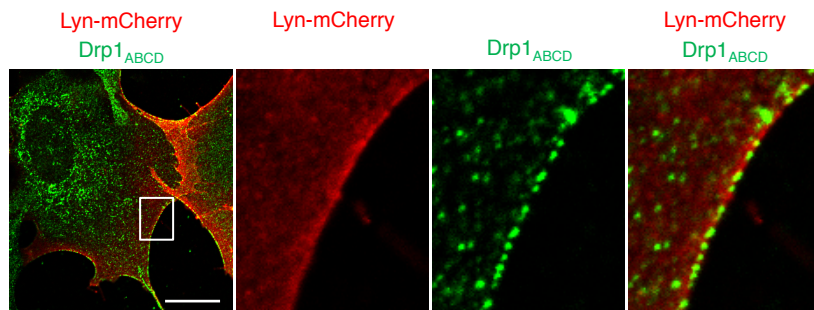


**Supplementary Figure 1.** Drp1-KO MEFs expressing no Drp1, S-Drp1 or Drp1<sub>ABCD</sub> were analyzed by immunofluorescence microscopy with antibodies to Drp1 and a peroxisomal protein, Pex14. Arrowheads indicate peroxisomes that are associated with S-Drp1 and Drp1<sub>ABCD</sub>.



**Supplementary Figure 2.** Drp1<sub>ABCD</sub> is associated with the plasma membrane. Drp1-KO MEFs expressing Drp1<sub>ABCD</sub> and a plasma membrane marker, Lyn-mCherry, were analyzed by immunofluorescence microscopy with anti-Drp1 antibodies. Boxed regions are enlarged. Bar, 20  $\mu$ m.