

Supplementary Materials: Purification and Characterization of Native and Vaccine Candidate Mutant Enterotoxigenic *Escherichia coli* Heat-stable Toxins

Morten L. Govasli, Yuleima Diaz, Ephrem Debebe Zegeye, Christine Darbakk, Arne M. Taxt, Pål Puntervoll

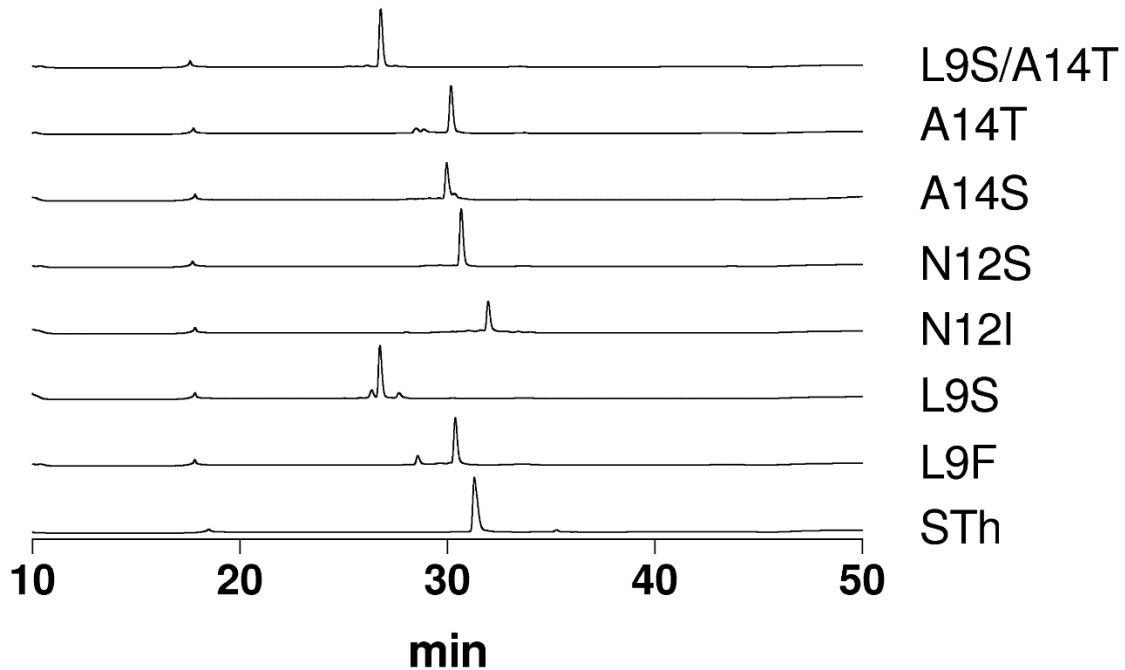


Figure S1. Analytical RP-HPLC elution profiles (A₂₂₀) of the mutant STh peptides compared to native STh.