

Supporting Information

Engineering A11 minibody-conjugated, polypeptide-based gold nanoshells for prostate stem cell antigen (PSCA)-targeted photothermal therapy

Kristine M. Mayle,¹ Kathryn R. Dern,¹ Vincent K. Wong,¹ Kevin Y. Chen¹, Shijun Sung,² Ke Ding,¹ April R. Rodriguez,¹ Scott Knowles³, Zachary Taylor,^{1,4} Z. Hong Zhou,^{1,5,6} Warren S Grundfest,^{1,2,4} Anna M. Wu,³ Timothy J Deming,¹ and Daniel T Kamei^{1,}*

¹Department of Bioengineering, University of California, Los Angeles, CA 90095

²Department of Electrical Engineering, University of California, Los Angeles, CA 90095

³Department of Molecular and Medical Pharmacology, University of California, Los Angeles CA 90095

⁴Department of Surgery, University of California, Los Angeles, CA 90095

⁵Department of Microbiology, Immunology & Molecular Genetics, University of California, Los Angeles, CA 90095

⁶California NanoSystems Institute, University of California, Los Angeles, CA 90095

*Corresponding Author: Prof. Daniel T. Kamei, kamei@seas.ucla.edu

Keywords: polypeptide vesicles; photothermal therapy; gold nanoshells

A11 Internalization Experiments

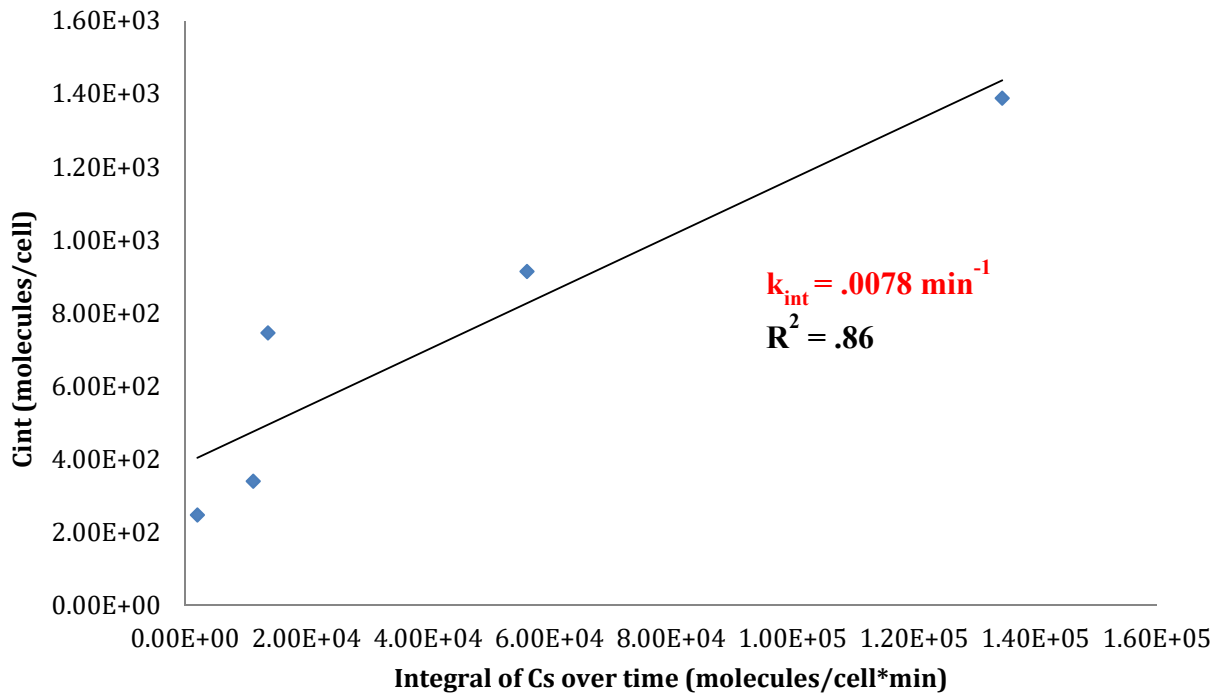
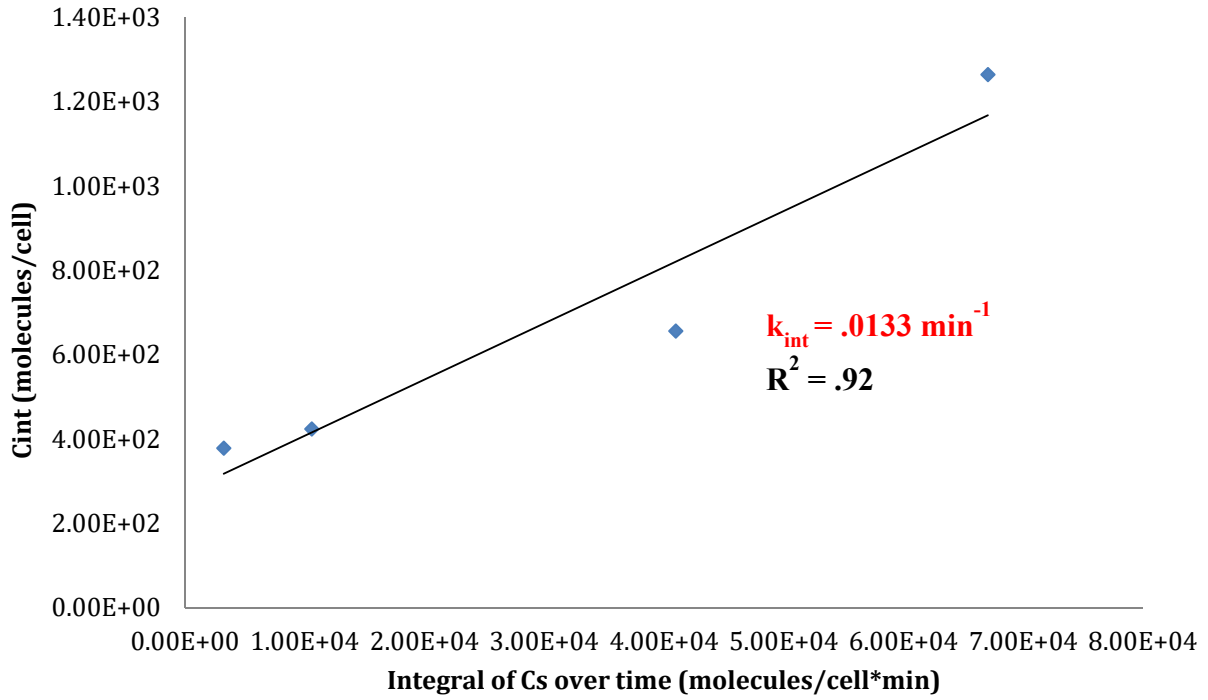


Figure S1. The other 2 runs of the A11 internalization experiment, which was run in triplicate. The third run is shown in the manuscript

TEM Image and DLS Data of Naked GKL

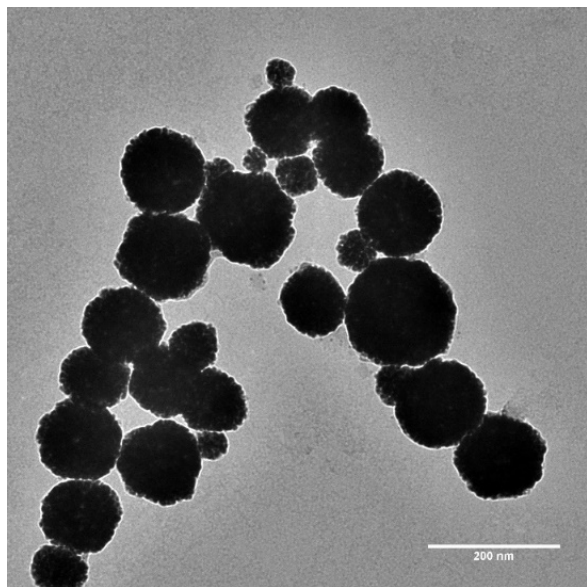


Figure S2. TEM image of the naked GKL. Scale bar is 200 nm. (Note that the DLS data indicated that the gold nanoshells are 148 ± 3 nm in diameter with a polydispersity index (PDI) of 0.11 ± 0.01 .)