

Supplementary Fig.S2

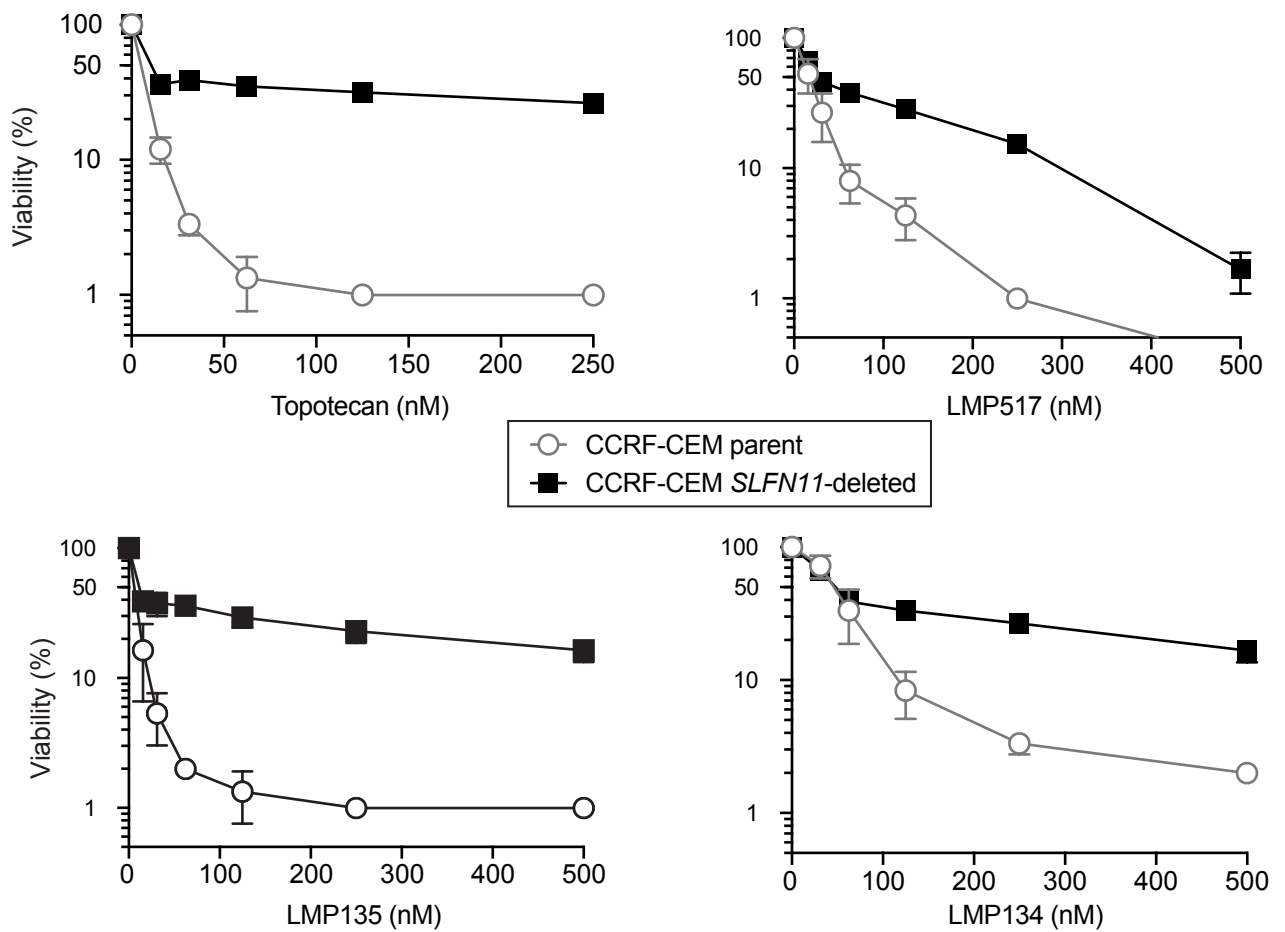


Figure S1: SLFN11 deletion confers resistance to fluorindenoisoquinolines LMP517, LMP135 and LMP134 and to topotecan in CCRF-CEM cells. Growth inhibition of CCRF-CEM parental and SLFN11-deleted cells was measured by ATPlite® assay after treatment with the indicated drugs for 72 h.