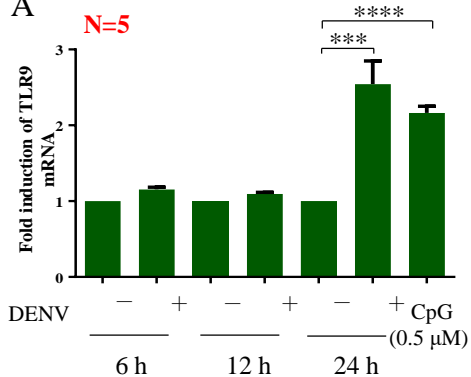
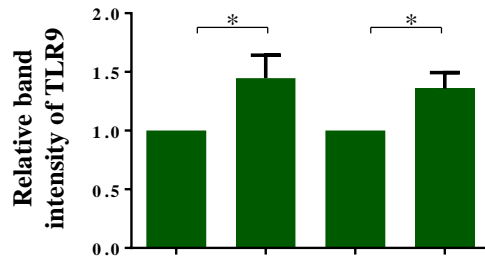
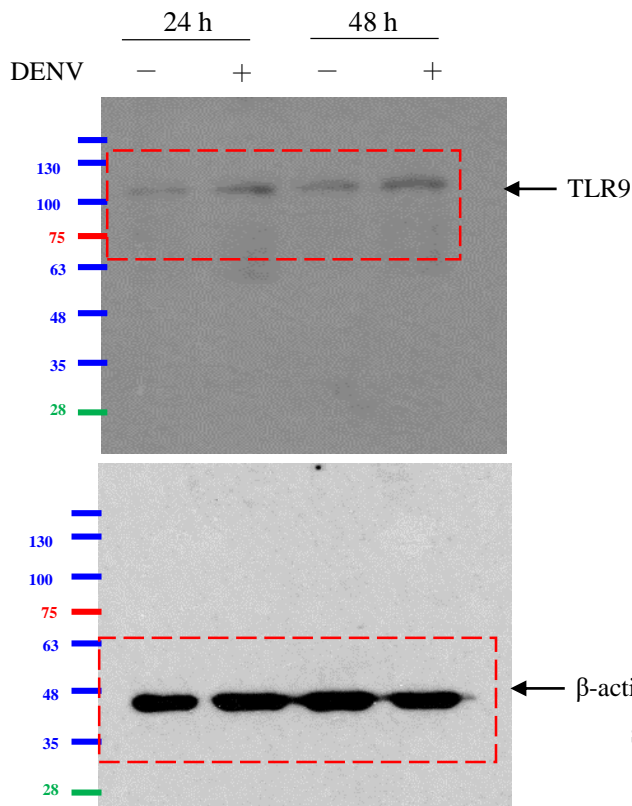


A



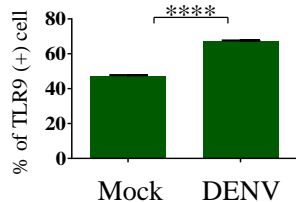
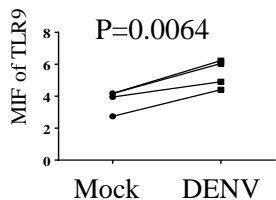
| TLR9 RNA experiment | 6 hr | | 12 hr | | 24 hr | | CpG |
|---------------------|------|----------|-------|----------|-------|----------|-------------|
| | mock | DENV | mock | DENV | mock | DENV | |
| 1 | 1. | 1.201636 | 1. | 1.113422 | 1. | 2.013911 | 2.077718 |
| 2 | 1. | 1.082975 | 1. | 1.117287 | 1. | 1.664397 | 2.070530 |
| 3 | 1. | 1.205808 | 1. | 1.024557 | 1. | 2.857988 | 2.020903 |
| 4 | 1. | 1.201636 | 1. | 1.113422 | 1. | 2.848100 | 2.143547 |
| 5 | 1. | 1.082975 | 1. | 1.117287 | 1. | 3.328795 | 2.505329 |
| AVG. | 1 | 1.155006 | 1 | 1.097195 | 1 | 2.542638 | 2.1636054 |
| SEM | 0 | 0.029416 | 0 | 0.01818 | 0 | 0.305095 | 0.087630191 |
| Student's T test | | | | | | 0.0010 | < 0.0001 |
| p value (v.s. mock) | | | | | | | |

B



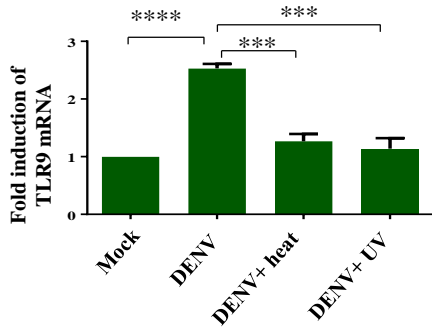
| TLR9 western blot experiment | 24 hr | | 48 hr | |
|------------------------------|-------|----------|-------|----------|
| | mock | DENV | mock | DENV |
| 1 | 1. | 1.162495 | 1. | 1.156429 |
| 2 | 1. | 0.982794 | 1. | 1.202340 |
| 3 | 1. | 1.642353 | 1. | 2.018348 |
| 4 | 1. | 1.056870 | 1. | 1.245430 |
| 5 | 1. | 2.510905 | 1. | 0.785699 |
| 6 | 1. | 0.996724 | 1. | 1.424089 |
| 7 | 1. | 1.262923 | 1. | 1.240313 |
| 8 | 1. | 1.966083 | 1. | 1.788079 |
| AVG. | 1 | 1.447643 | 1 | 1.357591 |
| SEM | 0 | 0.194788 | 0 | 0.136559 |
| Student's T test | | 0.0375 | | 0.0202 |
| p value (v.s. mock) | | | | |

C



| TLR9 MIF experiment | 24 hr | | TLR9 (+) % experiment | 24 hr | |
|-------------------------|----------|----------|-----------------------|----------|-------------|
| | mock | DENV | | mock | DENV |
| 1 | 4.18 | 6.23 | 1 | 47.2 | 67.9 |
| 2 | 2.74 | 4.41 | 2 | 46.2 | 66.02 |
| 3 | 3.95 | 4.91 | 3 | 48.98 | 68.05 |
| 4 | 4.17 | 6.05 | 4 | 45.64 | 66.62 |
| AVG. | 3.76 | 5.4 | AVG. | 47.005 | 67.1475 |
| SEM | 0.344117 | 0.440795 | SEM | 0.733138 | 0.494155424 |
| paired Student's T test | | 0.0064 | Student's T test | | < 0.0001 |
| p value (v.s. mock) | | | p value (v.s. mock) | | |

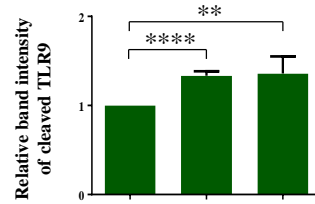
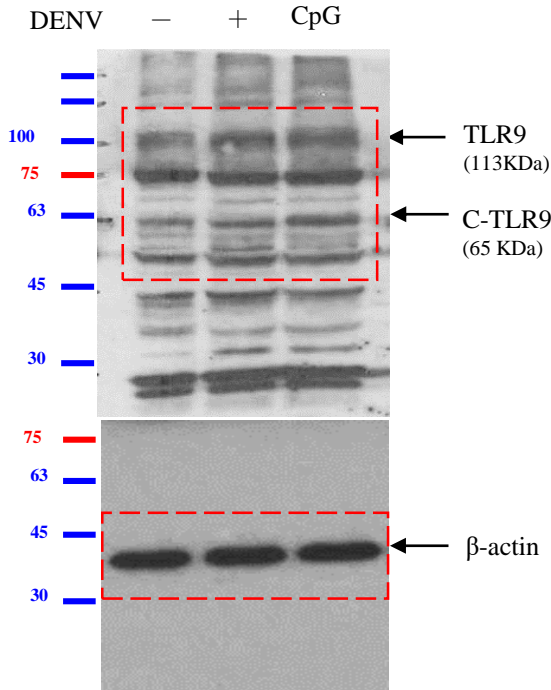
D



TLR9 mRNA

| experiment | 24 hr | | | |
|---------------------|-------|-------------|------------|-------------|
| | mock | DENV | DENV+ Heat | DENV +UV |
| 1 | 1 | 2.394957 | 1.45902 | 1.176907 |
| 2 | 1 | 2.751084 | 1.479388 | 1.235419 |
| 3 | 1 | 2.52 | 1.18 | 1.51 |
| 4 | 1 | 2.46 | 0.95 | 0.63 |
| AVG. | 1 | 2.53151025 | 1.267102 | 1.1380815 |
| SEM | 0 | 0.077516462 | 0.125843 | 0.184267059 |
| Student's T test | | < 0.0001 | 0.0001 | 0.0004 |
| p value (v.s. DENV) | | | | |

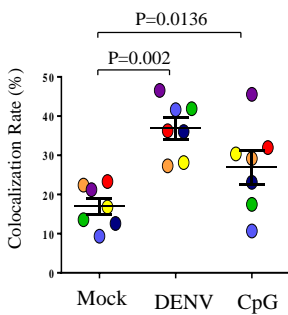
E



TLR9 western blot

| experiment | 24 hr | | |
|---------------------|-------|-------------|----------|
| | mock | DENV | CpG |
| 1 | 1 | 1.359192 | |
| 2 | 1 | 1.353546 | |
| 3 | 1 | 1.248903 | |
| 4 | 1 | 1.540517 | |
| 5 | 1 | 1.17527 | 1.166828 |
| 6 | 1 | 1.324129 | 1.551494 |
| AVG. | 1 | 1.333592833 | 1.359161 |
| SEM | 0 | 0.050398118 | 0.192333 |
| Student's T test | | < 0.0001 | 0.0074 |
| p value (v.s. mock) | | | |

F



TLR9 confocal

| experiment | 24 hr | | |
|---------------------|----------|-------------|----------|
| | mock | DENV | CpG |
| 1 | 23.32 | 36.26 | 31.98 |
| 2 | 22.39 | 27.33 | 29.18 |
| 3 | 16.81 | 28.14 | 30.35 |
| 4 | 13.57 | 41.9 | 17.47 |
| 5 | 9.37 | 41.66 | 10.7 |
| 6 | 12.6 | 36.07 | 23.09 |
| 7 | 21.22 | 46.56 | 45.58 |
| AVG. | 17.04 | 36.84571429 | 26.90714 |
| SEM | 2.048051 | 2.718427291 | 4.247493 |
| Student's T test | | 0.0020 | 0.0136 |
| p value (v.s. mock) | | | |