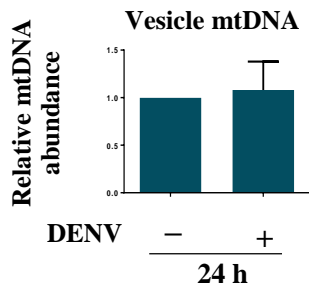
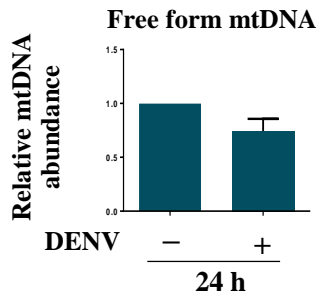
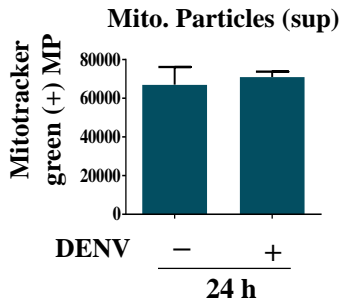
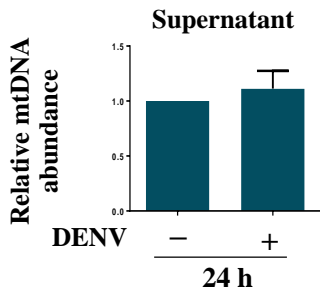


A



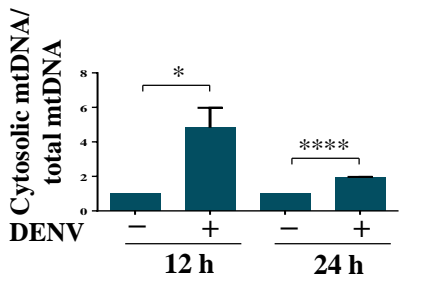
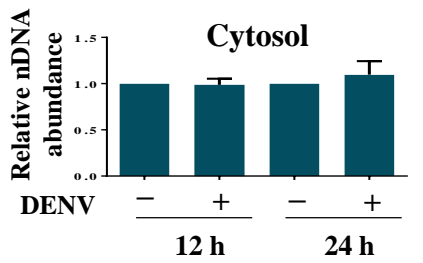
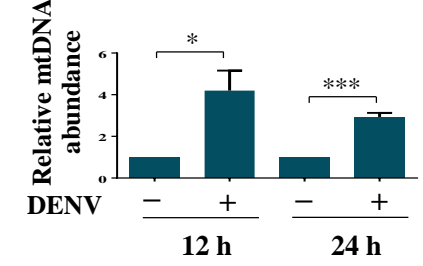
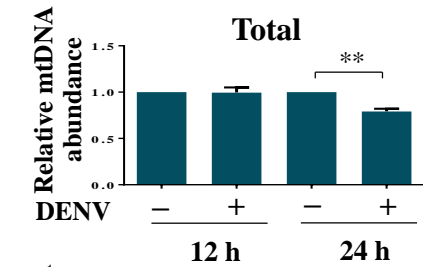
mtDNA (sup.)		24 hr	
experiment	mock	DENV	
1	1	0.9427845	
2	1	1.257013	
3	1	1.489677	
4	1	1.775633	
5	1	0.9559453	
6	1	0.5069798	
7	1	0.863539	
AVG.	1	1.113081657	
SEM	0	0.160715552	
Student's T test	p value (v.s. mock)	0.4951	

Mito. particles (sup.)		24 hr	
experiment	mock	DENV	
1	80630	78268	
2	73026	64247	
3	77354	75630	
4	73261	69602	
5	21933	61654	
6	76169	76305	
AVG.	67062.16667	70951	
SEM	9098.675499	2812.439463	
Student's T test	p value (v.s. mock)	0.6916	

Free form mtDNA		24 hr	
experiment	mock	DENV	
1	1	0.6579273	
2	1	0.6040193	
3	1	0.9717565	
4	1	0.4401295	
5	1	1.04006	
AVG.	1	0.74277852	
SEM	0	0.113766751	
Student's T test	p value (v.s. mock)	0.0536	

Vesicle mtDNA		24 hr	
experiment	mock	DENV	
1	1	0.6169961	
2	1	0.6524774	
3	1	2.027919	
4	1	0.5594186	
5	1	1.546493	
AVG.	1	1.08066082	
SEM	0	0.298690236	
Student's T test	p value (v.s. mock)	0.794	

B



Total mtDNA

experiment	12 hr		24 hr	
	mock	DENV	mock	DENV
1	1	1.031341	1	0.791134
2	1	1.068122	1	0.841059
3	1	0.893023	1	0.747845
AVG.	1	0.997495333	1	0.793346
SEM	0	0.053304352	0	0.026931284
Student's T test	p value (v.s. mock)		0.9648	
			0.0016	

Cytosol mtDNA

experiment	12 hr		24 hr	
	mock	DENV	mock	DENV
1	1	4.287094	1	3.149232
2	1	2.488023	1	3.105876
3	1	5.81589	1	2.549121
AVG.	1	4.197002333	1	2.934743
SEM	0	0.961727972	0	0.193216787
Student's T test	p value (v.s. mock)		0.0293	
			0.0006	

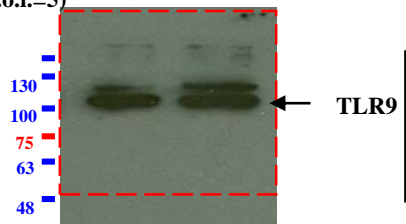
Cytosol nDNA

experiment	12 hr		24 hr	
	mock	DENV	mock	DENV
1	1	0.942785	1	0.613442
2	1	1.156688	1	1.060688
3	1	1.006956	1	0.923382
AVG.	1	1.035476	1	0.865837
SEM	0	0.063374	0	0.132276
Student's T test	p value (v.s. mock)		0.6055	
			0.3678	

Cytosol/ total mtDNA

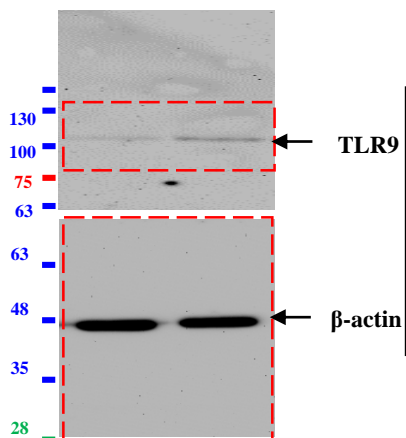
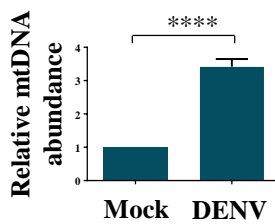
experiment	12 hr		24 hr	
	mock	DENV	mock	DENV
1	1	4.439752	1	1.90925
2	1	3.052356	1	2.013523
3	1	6.98002	1	1.826635
AVG.	1	4.824042667	1	1.916469333
SEM	0	1.149984871	0	0.054070541
Student's T test	p value (v.s. mock)		0.0292	
			< 0.0001	

DENV (m.o.i.=5) 24 hr - +



IP: TLR9

IP: TLR9/qPCR: mtDNA

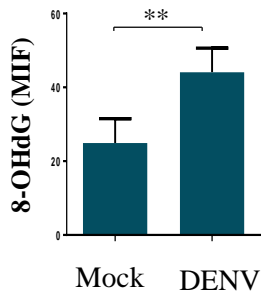


input

IP:TLR9 qPCR: mtDNA

experiment	24 hr	
	mock	DENV
1	1	3.434262
2	1	3.446185
3	1	2.838247
4	1	3.958627
AVG.	1	3.41933025
SEM	0	0.229027448
Student's T test	p value (v.s. mock)	
	< 0.0001	

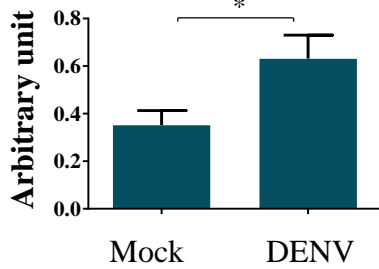
C



8-OHdG MIF		24 hr	
experiment	mock	DENV	
1	35.59	56.32	
2	26.37	41.89	
3	12.78	34.19	
AVG.	24.91333333	44.13333333	
SEM	6.624837944	6.48610395	
Student's T test	p value (v.s. mock)	0.0092	

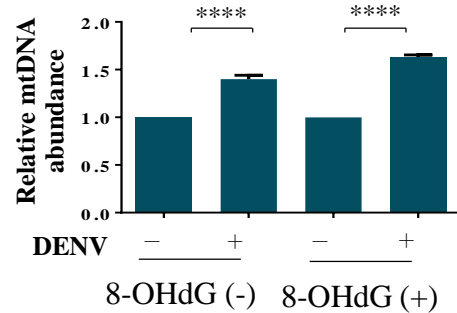
D

D-I 8-OHdG (cytosol)



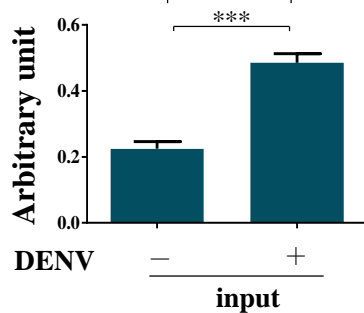
8-OHdG cytosol		24 hr	
experiment	mock	DENV	
1	0.341	0.554	
2	0.1605	0.304	
3	0.3735	0.823	
4	0.336	0.632	
5	0.546	0.845	
AVG.	0.3514	0.6316	
SEM	0.061296696	0.098872949	
Student's T test	p value (v.s. mock)	0.0426	

D-II Cytosol



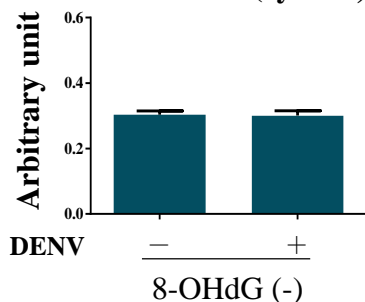
Cytosol mtDNA		8-OHdG (-)		8-OHdG (+)	
experiment	mock	DENV	mock	DENV	
1	1	1.394744	1	1.670176	
2	1	1.292353	1	1.60214	
3	1	1.484524	1	1.630145	
4	1	1.428994			
AVG.	1	1.40015375	1	1.634153667	
SEM	0	0.040414896	0	0.01974231	
Student's T test	p value (v.s. mock)	< 0.0001		< 0.0001	

D-III 8-OHdG



8-OHdG input		24 hr	
experiment	mock	DENV	
1	0.1605	0.468	
2	0.244	0.5635	
3	0.244	0.435	
4	0.25	0.4745	
AVG.	0.224625	0.48525	
SEM	0.021421733	0.027479159	
Student's T test	p value (v.s. mock)	0.0003	

D-IV 8-OHdG (cytosol)



8-OHdG input		24 hr	
experiment	mock	DENV	
1	0.307	0.3045	
2	0.328	0.332	
3	0.3045	0.3045	
4	0.2745	0.262	
AVG.	0.3035	0.30075	
SEM	0.011009466	0.014451788	
Student's T test	p value (v.s. mock)	0.8846	