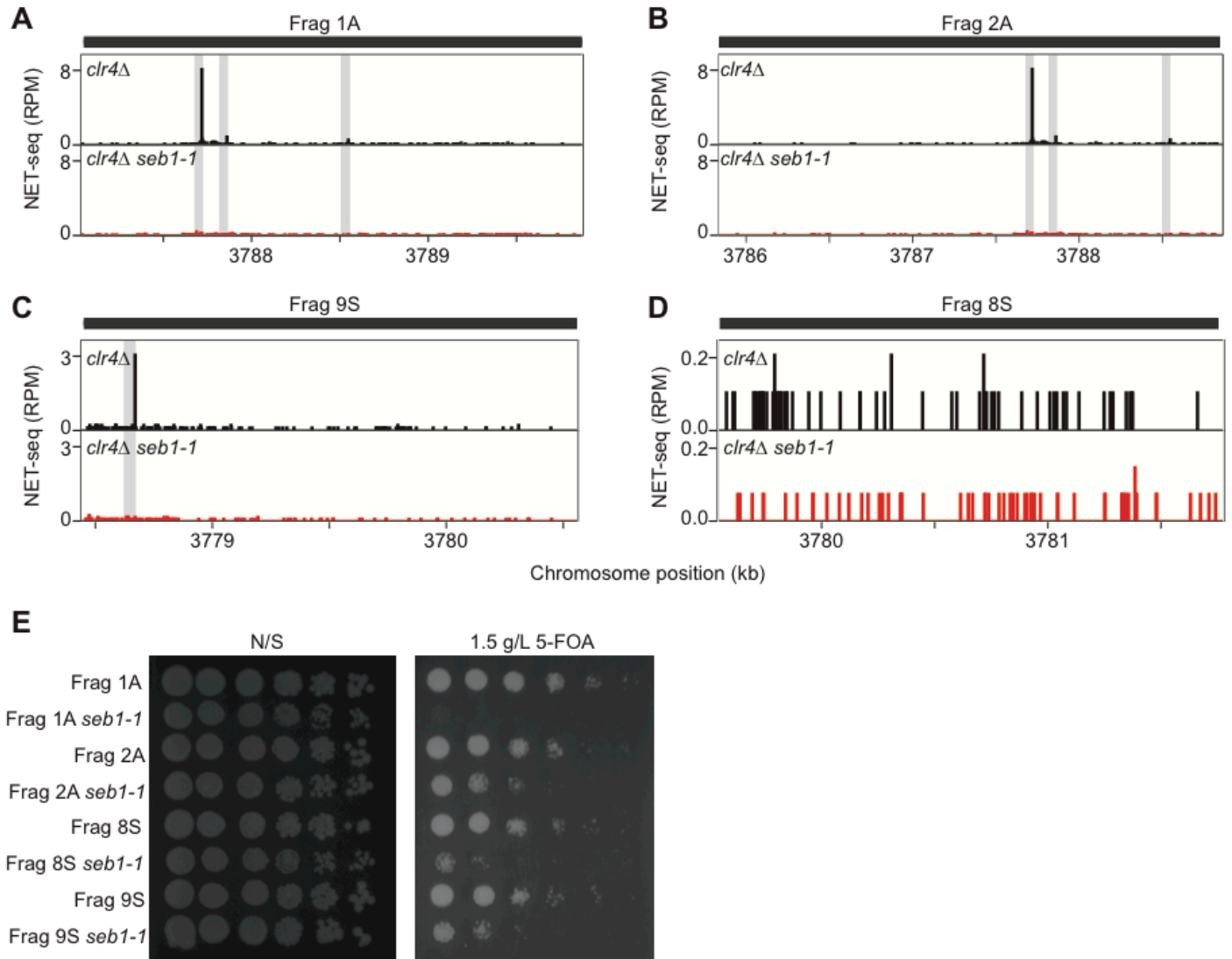


Supplemental Figure S5.

Parsa\_Supplemental\_FigS5



**Supplemental Figure S5. Polymerase pauses and heterochromatin formation within centromere fragments are *Seb1*-dependent. A-D) NET-seq read density (RPM) for *clr4Δ* (black) and *clr4Δ seb1-1* (red) aligned to the four fragments in **Figure 2H** that display a capacity to induce heterochromatin formation in the context of the reporter construct shown in **Figure 2G**. **A) Frag1A**; **B) Frag2A**; **C) Frag9S**; **D) Frag8S**. Grey bars represent locations of NET-seq peaks/RNAPII pause sites present in the *clr4Δ* strain. **E)** 5-FOA spotting assay for Fragments with or without the mutant *seb1-1* allele.**