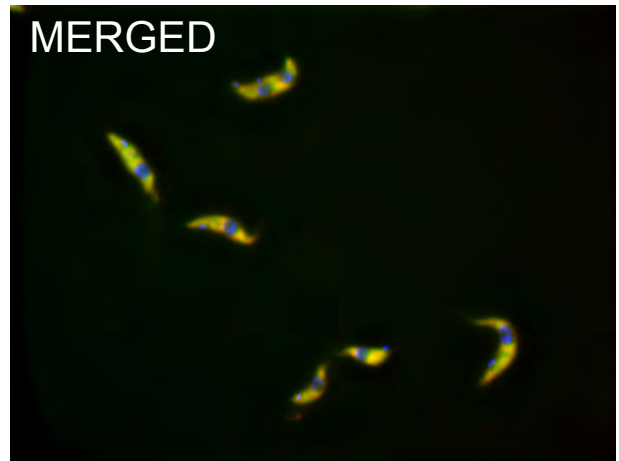
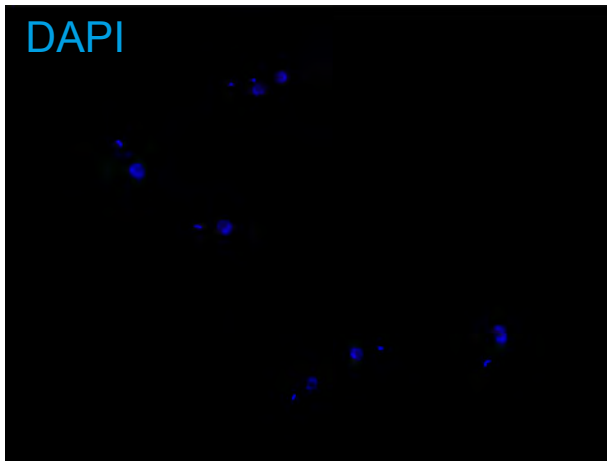
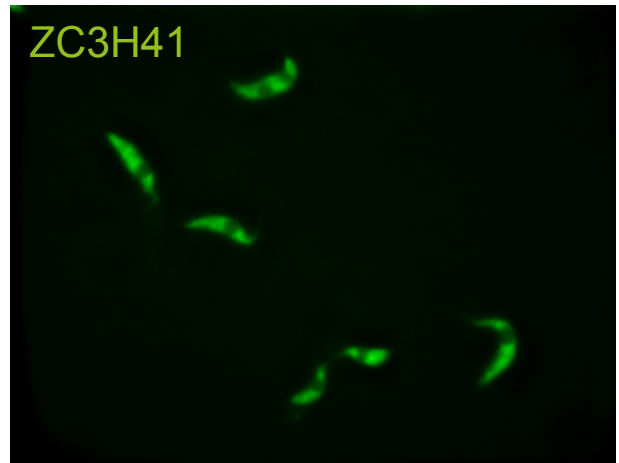
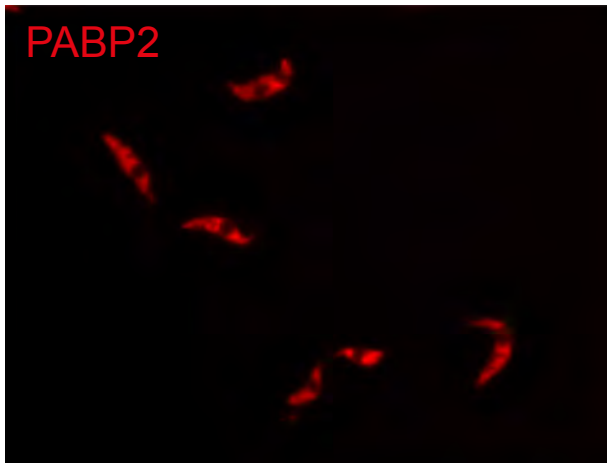
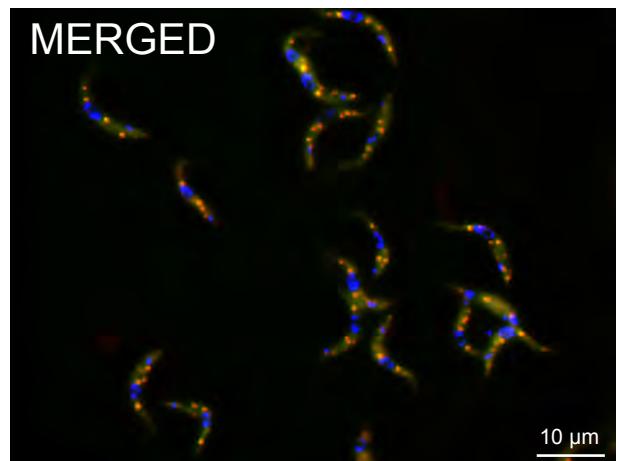
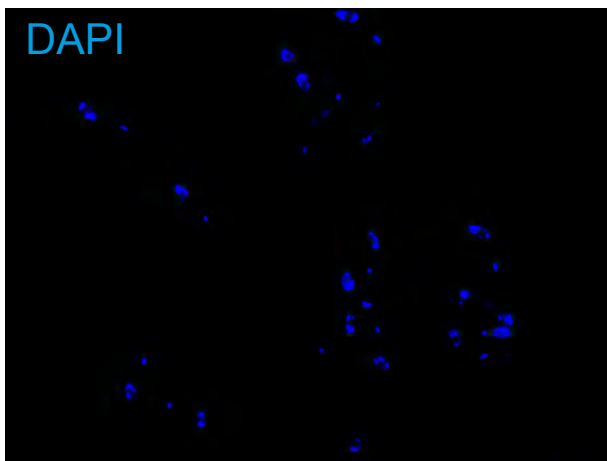
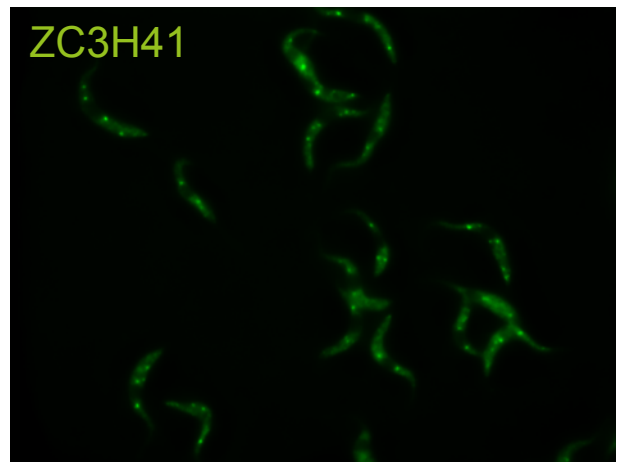
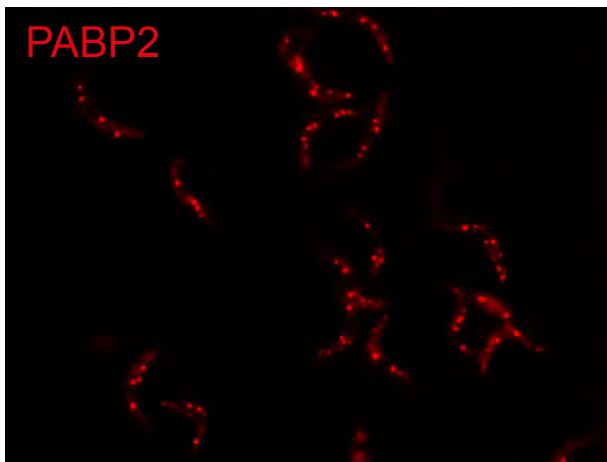


UNTREATED

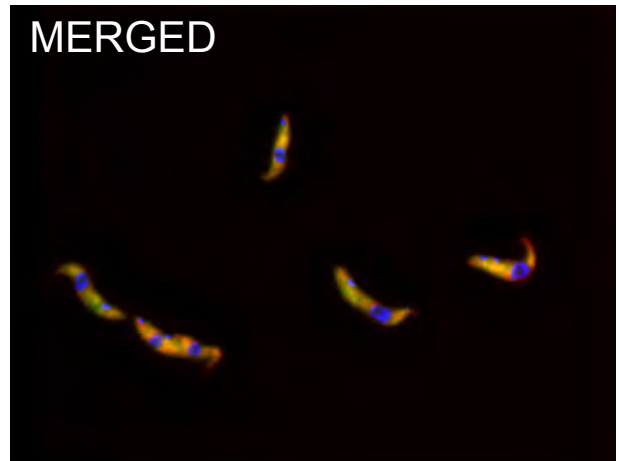
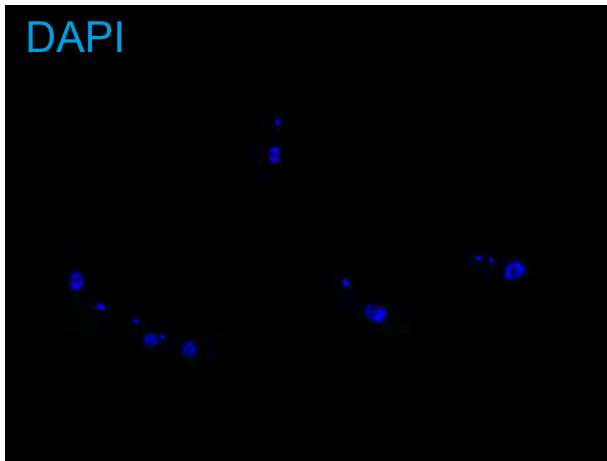
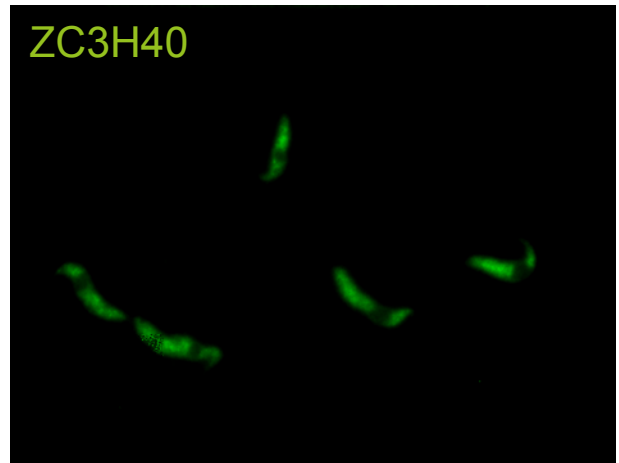
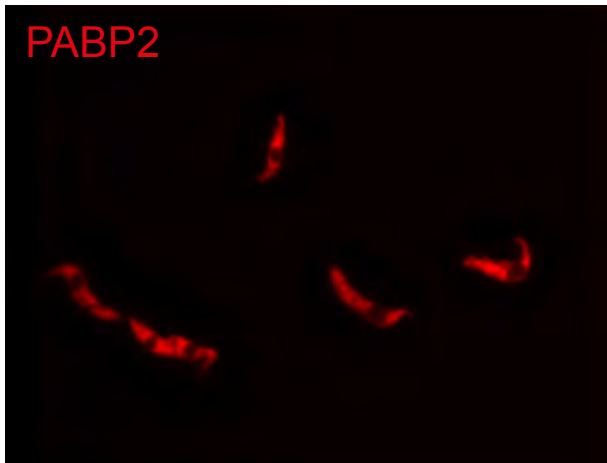


STARVATION

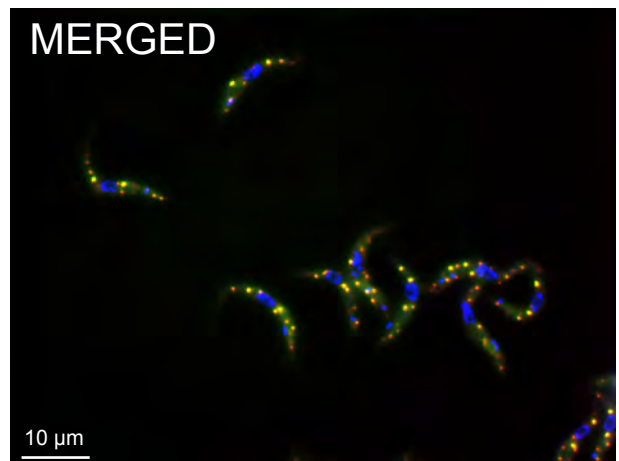
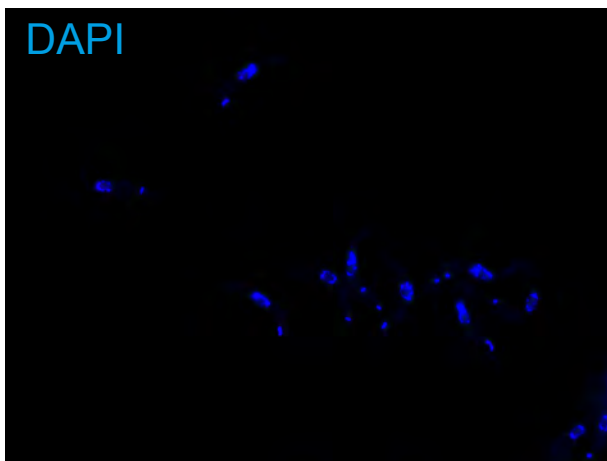
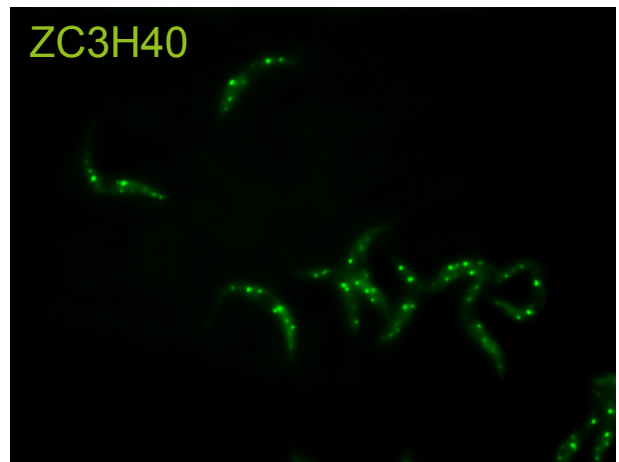
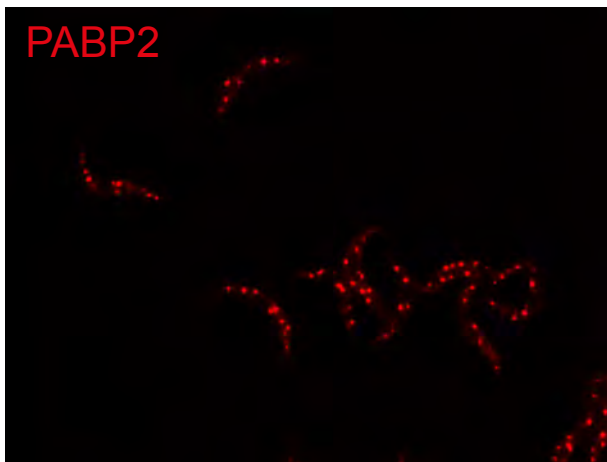


10 μm

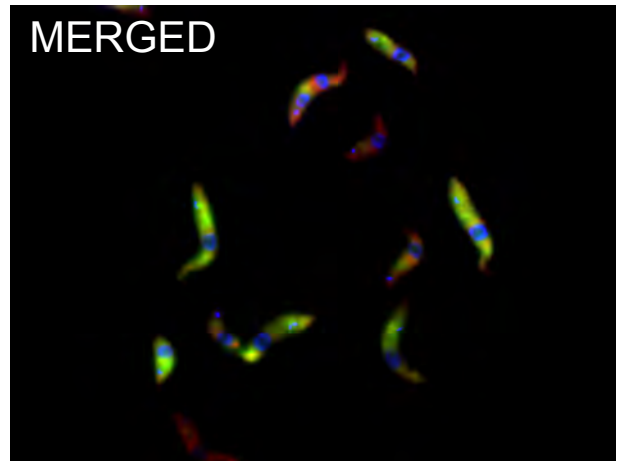
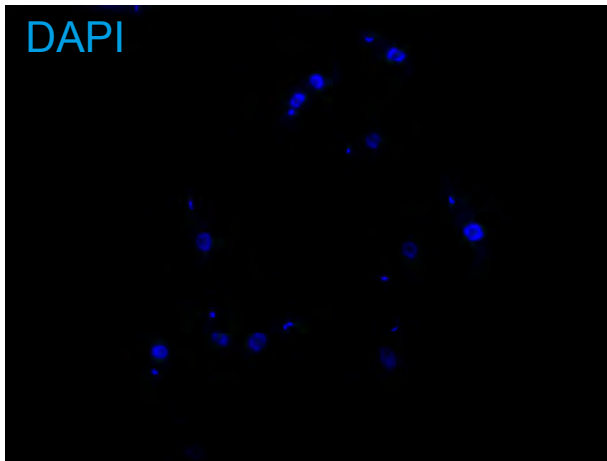
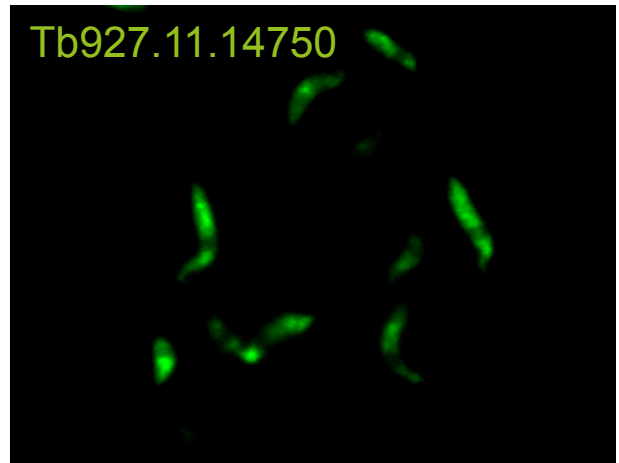
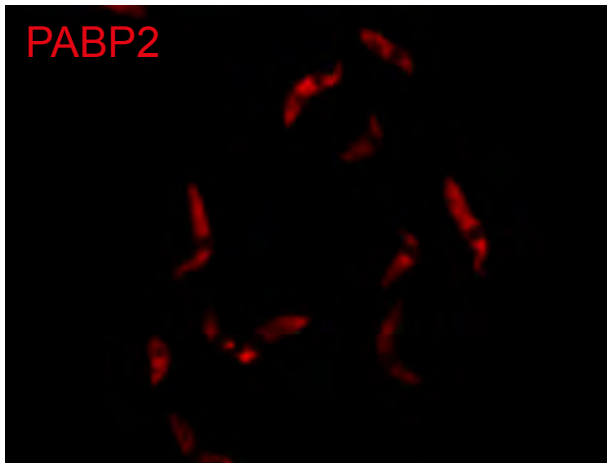
UNTREATED



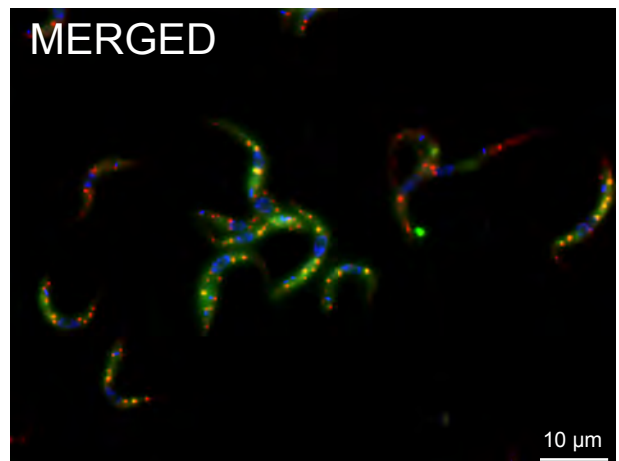
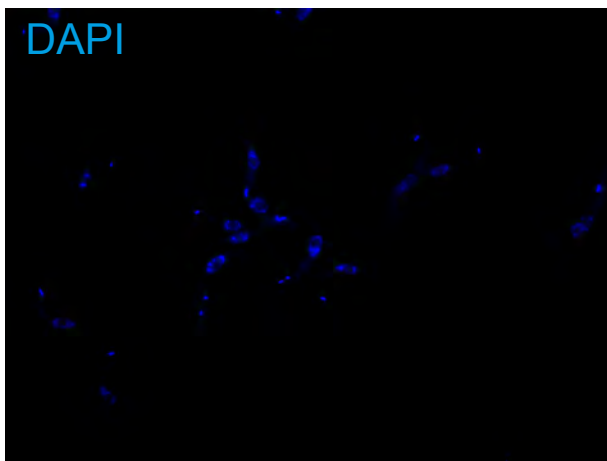
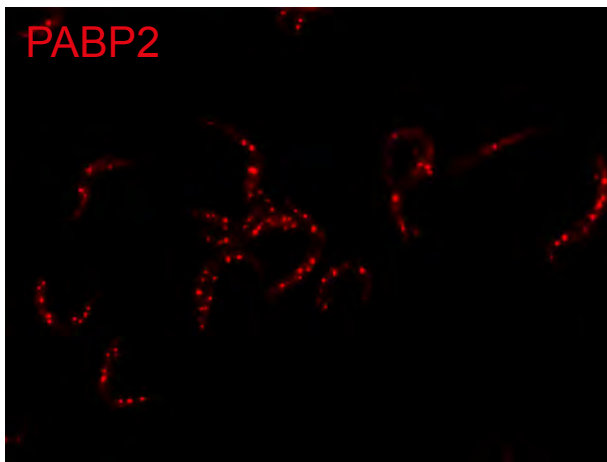
STARVATION



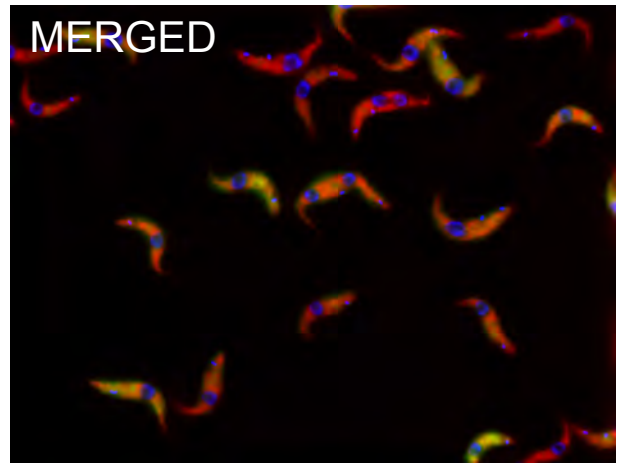
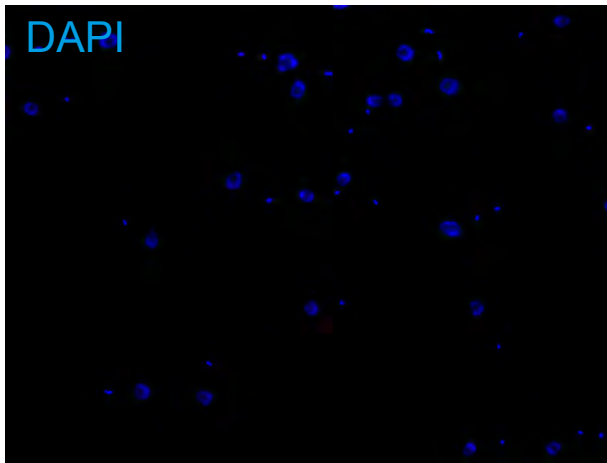
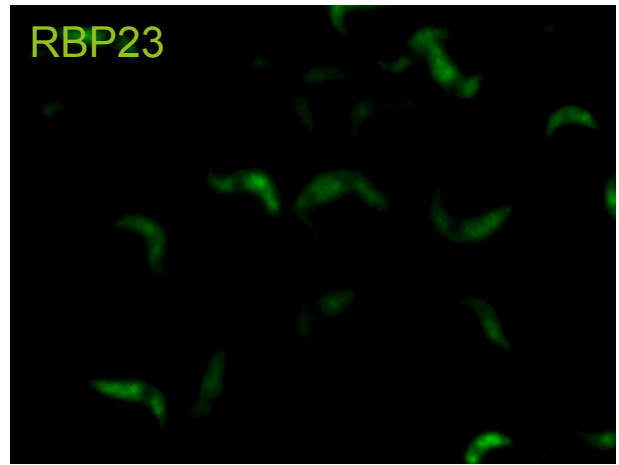
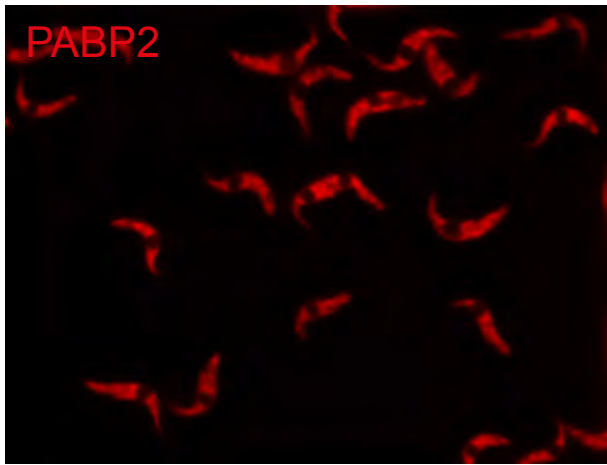
UNTREATED



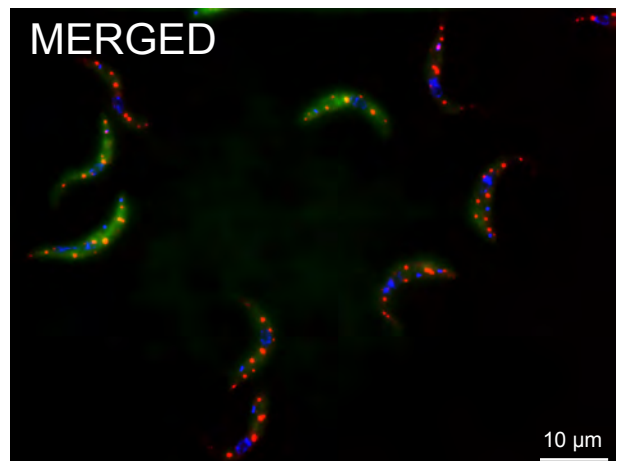
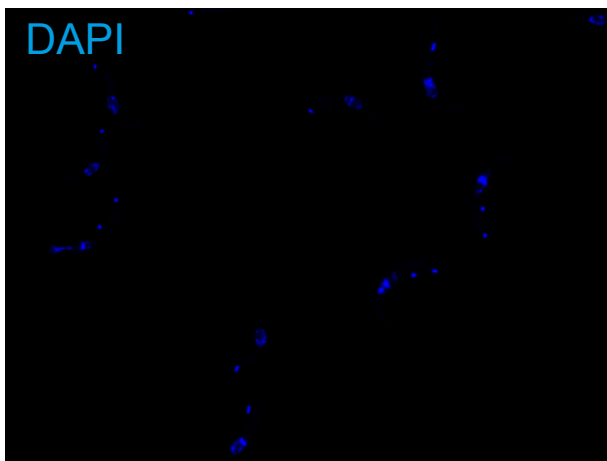
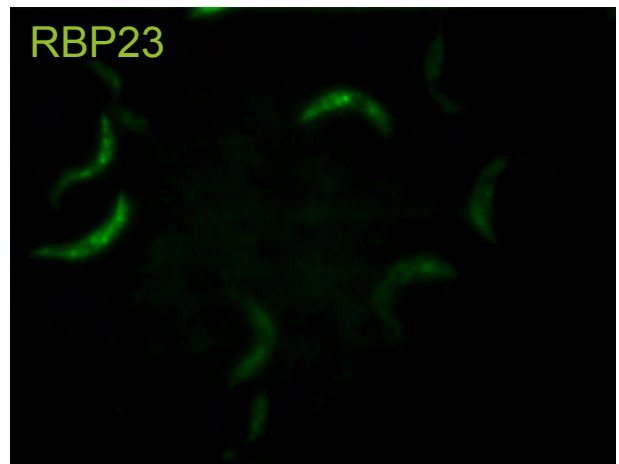
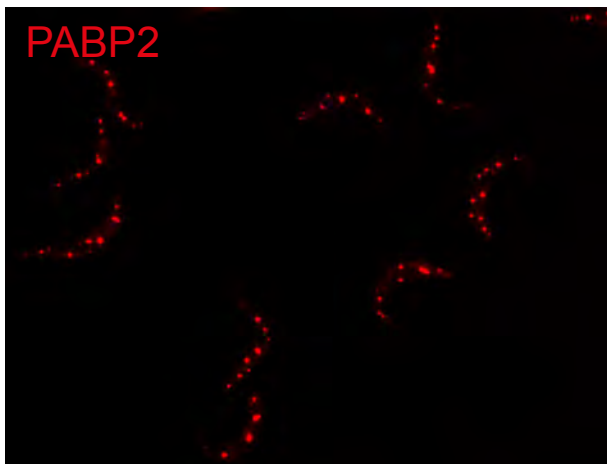
STARVATION



UNTREATED

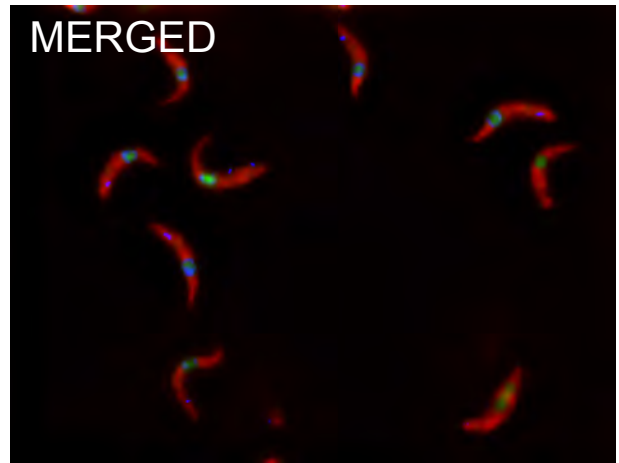
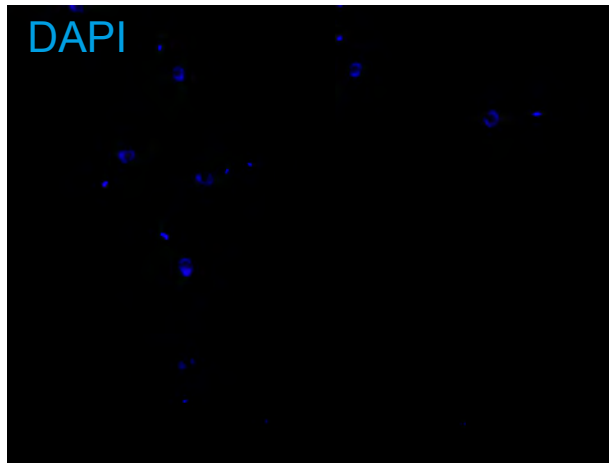
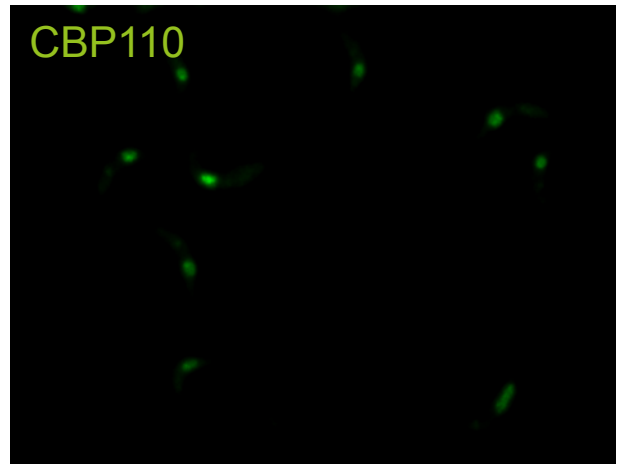
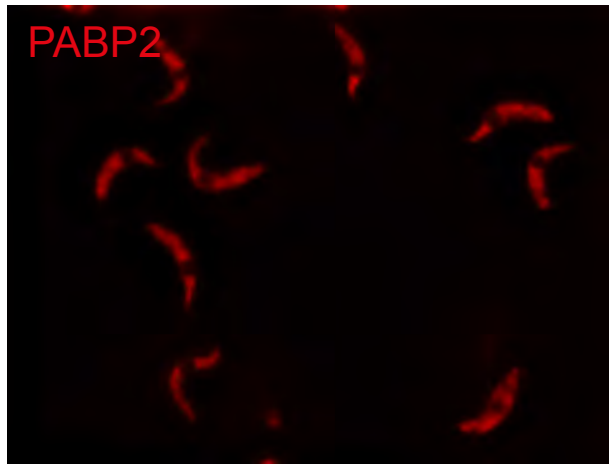


STARVATION

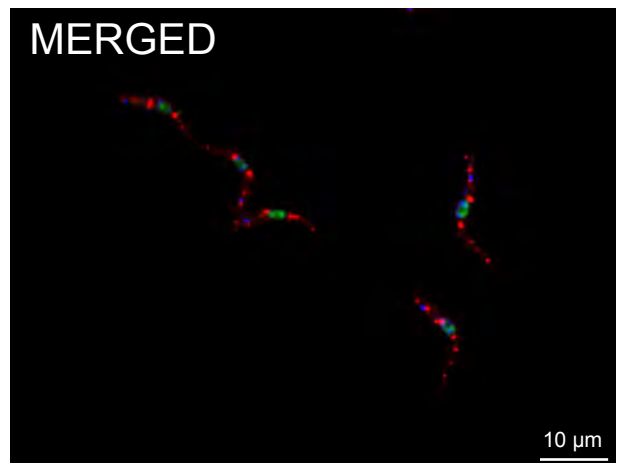
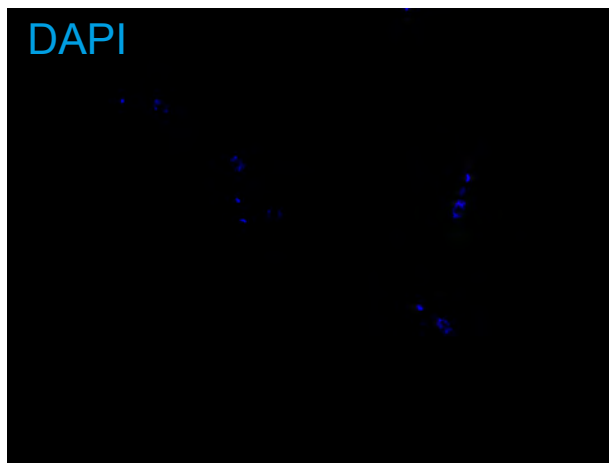
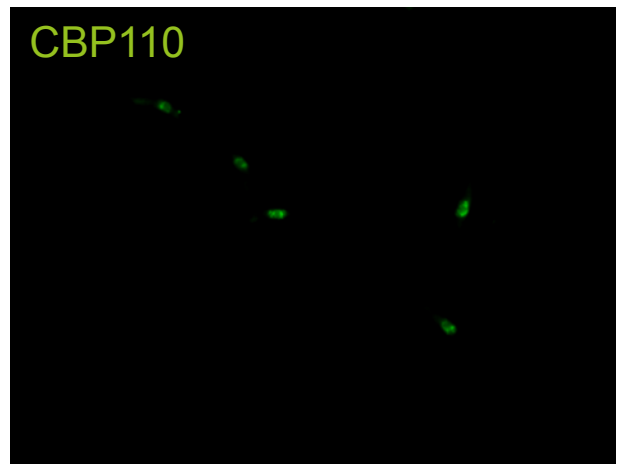
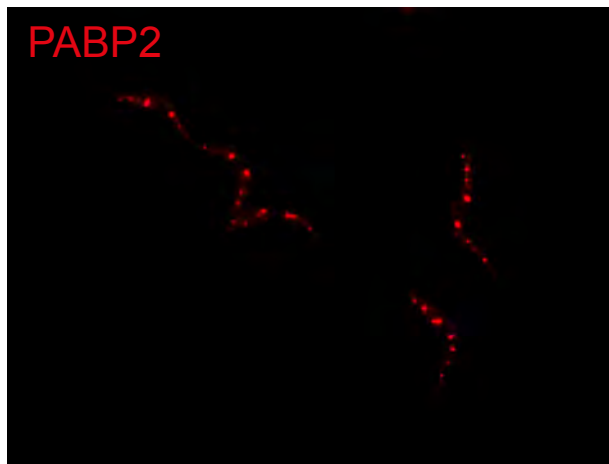


10 μm

UNTREATED



STARVATION



S1 Figure

Broad field images of untreated and starved (120 min PBS) trypanosomes expressing PABP2-mChFP as a stress granule marker together with the eYFP fusions of ZC3H41 (A), ZC3H40 (B), Tb927.11.14750 (C), RBP23 (D) or CBP110 (E). All images are presented as Z-stack projections (method sum slices) and at least 2 clonal cell lines gave identical localisations. Note that for RBP23 we observed differences in expression levels between cells that appeared not to correlate to the cell cycle; this was the case in all three clonal cell lines that were analysed.